

Charts to Friday 6th December

Chart Profit eBook

Market Charts, Major ETFs

Market Sentiment Analysis



www.aiqsystems.com

www.chartprofitwebcast.com

terms of service

Stock Market Summary

I don't often mark trendlines on the charts but with the majority of Sentiment indicators registering extreme optimism (see below) I have marked Support trendlines on the four stock index ETFs. I would consider it important if all four of these break down.

***** PRICE PERFORMANCE / LOCATION

ES Analysis: Last week I marked Significant Selling once (Ineffective) and Significant Buying once (Effective). Aggressive Buying (green-at-top) was marked on Friday following a gap-higher to Open and ES finished the week almost where it started. The 30day poc migrated to 1792 and as long as ES holds above this level it is in a strong price location.

***** BREADTH

Breadth: The CP Market Timing system turned negative (from neutral) for Nyse, stayed positive for Nasdaq and R2000 and stayed negative for UK.

Stocks>50dyma numbers: Nyse 63%, Nasdaq 63%, R2000 65%, UK 49%. Numbers >50 are considered supportive.

***** SENTIMENT I don't often mark trendlines on the charts but with the majority of Sentiment indicators registering extreme optimism I have marked Support trendlines on the four stock index ETFs. I would consider it important if all four of these break down.

Consensus Polls:

12/06: AAll (public poll). Bulls% was lower at 42.6% having reached

49.2% five weeks ago which was the highest since January. Bears% was also lower at 27.5%. Four weeks ago the 4wk ma of net (Bulls-Bears) reached 25.05 which was the highest since early 2012.

12/06: Investors Intelligence. Bulls% was higher at 57.1% which is the highest since April 2011. Bears% was lower at 14.3% which is the lowest Bears% for years. The nett (Bulls minus Bears) at 42.8 is the highest single reading in my database and the 4wkma of nett at 39.82 is an extreme reading, the highest for many years.

12/06: Market Vane (advisers) poll was lower at 65. Previous week's 67 was the highest reading since late May.

12/06: The NAAIM number (a measurement of average current equity exposure among active money managers) was lower at 94.75 - still an extremely high number. Last week the number reached 101.45 and there is only one reading higher than this in the database which was February's 104.25.

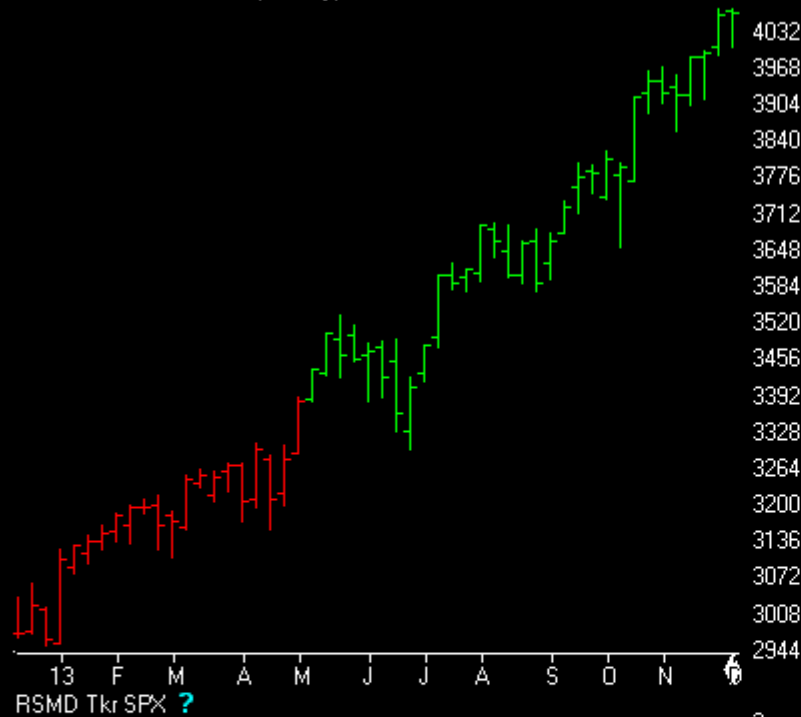
Mutual Fund Flow:

12/06: My version of the Rydex Assets Ratio ended the week at 504. Thursday's ratio at 5.67 is the highest in my database. This indicator is registering extreme optimism which has historically been a warning for the market.

12/06: lipperusfundflows reported Equity Fund inflows of \$1.5 Billion in the week to 6th December. The 4wk Flow number was slightly higher at \$19.40 Billion having reached \$38.90 four weeks ago which was the second highest number in my database.

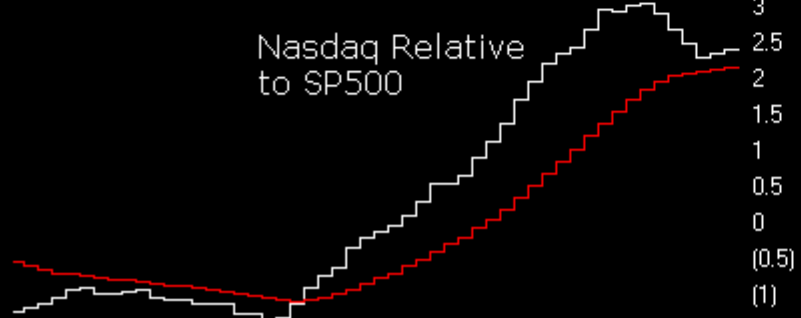
12/06: lipperusfundflows ex ETFs reported Equity Fund inflows of \$891 Million in the week to 4th December.

NASDAQ COMPOSITE (Weekly)



RSMD Tr SPX ?

Nasdaq Relative to SP500



ChartProfit Breadth System - wk ending 12/06

	-5	-4	-3	-2	-1	↓
NYSE	71	64	70	66	66	63
NasDaq	60	58	61	62	68	63
SP500	75	75	82	78	75	73
ND100	71	64	74	66	70	66
R2000	63	61	63	66	73	65
UK	76	63	67	57	64	49

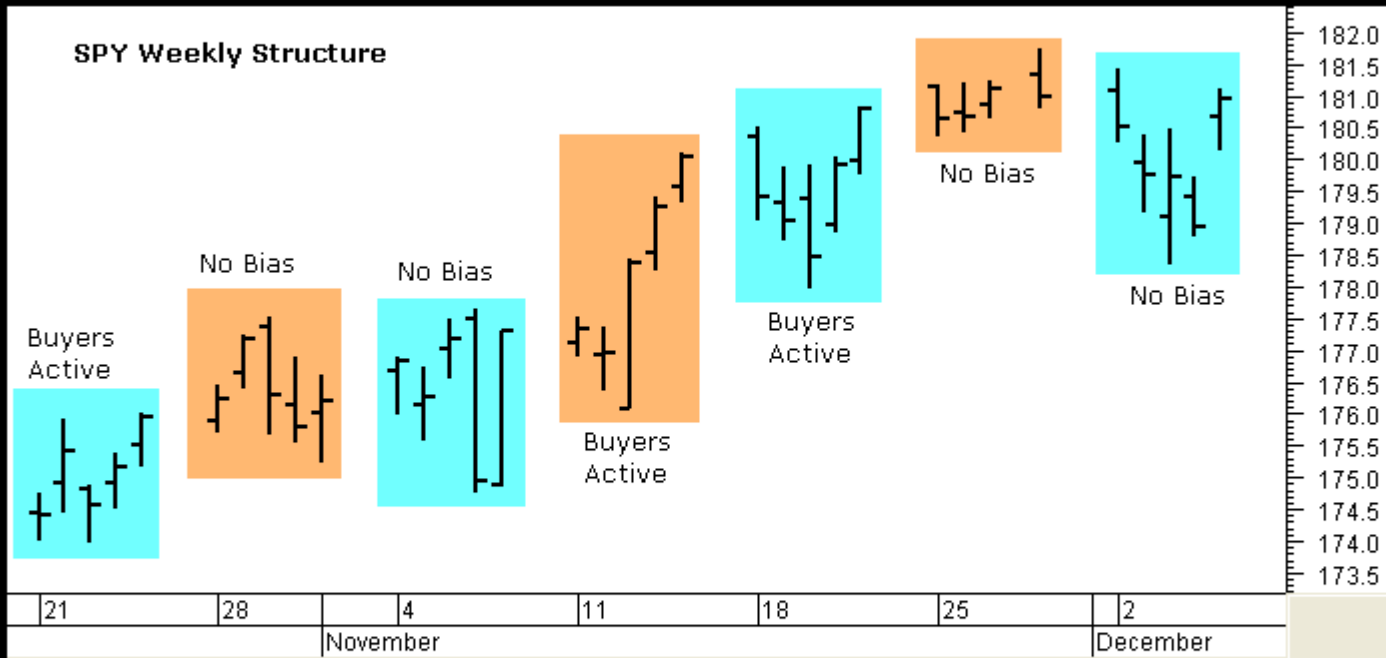
number = % stocks >50day ma

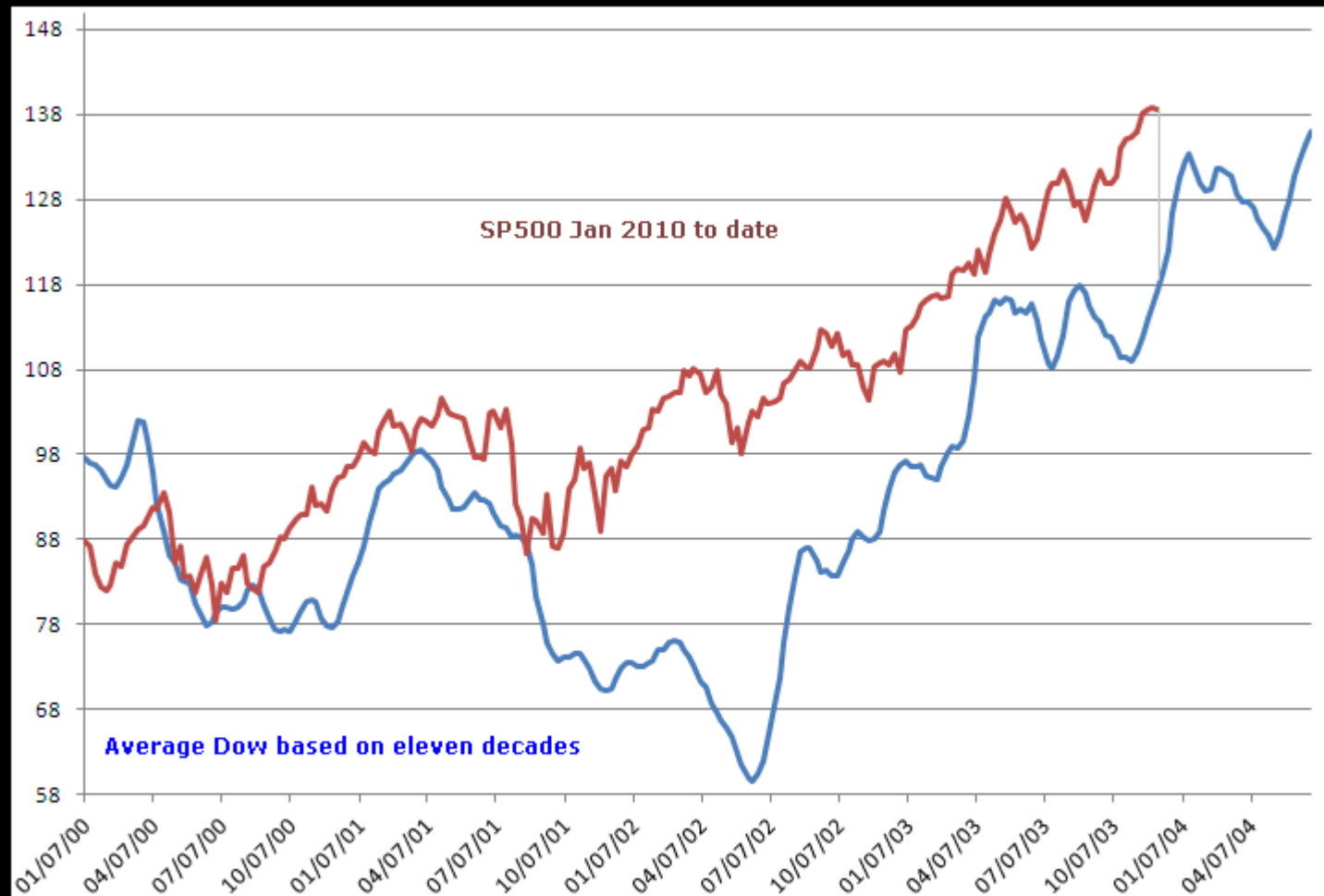
Relative to SPX wk ending 12/06

	-5	-4	-3	-2	-1	↓
NasDaq Comp	■	■	■	■	■	■
NasDaq 100	■	■	■	■	■	■
SOX	■	■	■	■	■	■
Russell 2000	■	■	■	■	■	■



SPY Weekly Structure





Commitments of Traders

Charts by AIQ TradingExpert

C.O.T.
Quick
View

	SP500	GOLD	CRUDE OIL	T-BONDS	GBPUSD	JPYUSD	EURUSD	USD IX
	CM Net	CM Net	CM Net	CM Net	CM Net	CM Net	CM Net	CM Net
	CM Long	CM Long	CM Long	CM Long	CM Long	CM Long	CM Long	CM Long
	CM Short	CM Short	CM Short	CM Short	CM Short	CM Short	CM Short	CM Short
	LT Net	LT Net	LT Net	LT Net	LT Net	LT Net	LT Net	LT Net
	LT Long	LT Long	LT Long	LT Long	LT Long	LT Long	LT Long	LT Long
	LT Short	LT Short	LT Short	LT Short	LT Short	LT Short	LT Short	LT Short
	ST Net	ST Net	ST Net	ST Net	ST Net	ST Net	ST Net	ST Net
	ST Long	ST Long	ST Long	ST Long	ST Long	ST Long	ST Long	ST Long
	ST Short	ST Short	ST Short	ST Short	ST Short	ST Short	ST Short	ST Short
12/03/13	9.1	96.3	38.1	63.5	0.0	100.0	60.9	71.7
11/26/13	0.0	89.5	49.7	80.5	12.3	100.0	64.9	66.8
12/03/13	36.1	87.7	11.3	65.2	27.7	94.8	64.8	31.9
11/26/13	31.9	92.1	40.1	86.0	36.0	86.8	63.2	7.1
12/03/13	92.8	18.3	68.1	79.7	100.0	15.8	55.4	50.0
11/26/13	100.0	27	69.5	89.7	100.0	15.3	47.5	64.6
12/03/13	23.3	7.3	60.7	76.7	100.0	0.0	44.3	27.0
11/26/13	81.5	11.9	48.3	57.7	84.9	0.0	41.3	36.6
12/03/13	29.7	7.8	100.0	63.9	86.5	0.0	33.2	47.6
11/26/13	78.9	0	100.0	28.2	66.1	16.9	37.5	77.3
12/03/13	72.4	76.5	90.9	29.6	0.0	93.1	33.9	51.6
11/26/13	17.5	67.2	81.0	29.1	6.0	89.6	43.9	36.9
12/03/13	100.0	13	39.1	2.2	100.0	8.0	15.7	43.0
11/26/13	100.0	25.3	35.5	4.0	94.5	0.0	12.8	18.8
12/03/13	75.1	48.1	36.6	6.1	46.1	15.6	6.7	87.9
11/26/13	65.9	42.9	38.9	0.0	52.5	8.3	0.0	82.4
12/03/13	1.0	100	61.9	24.7	0.0	23.3	55.0	31.8
11/26/13	0.0	79.4	66.9	0.0	0.0	35.1	55.1	38.3

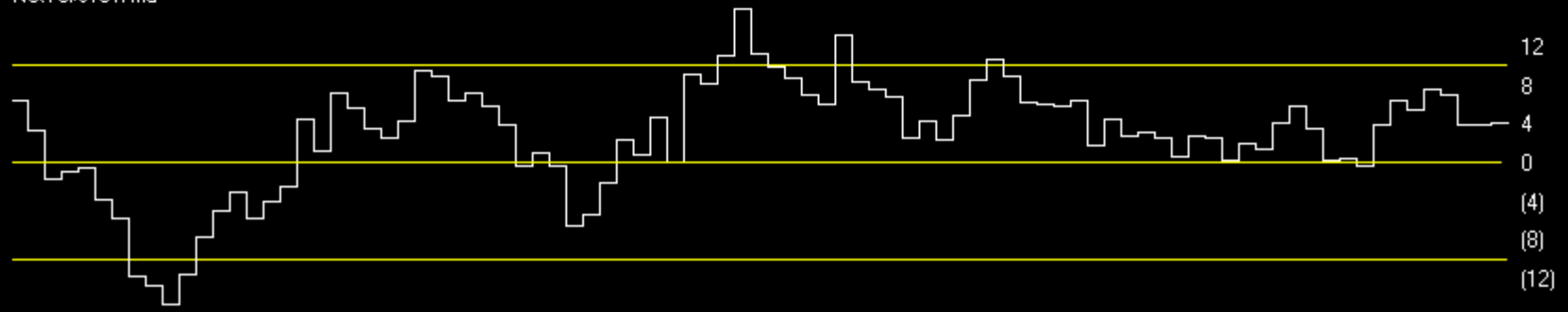
Market Charts

Charts by AIQ TradingExpert

MARKET CHART NYSE (Weekly) + Chartprofit Market Timing System (color study)



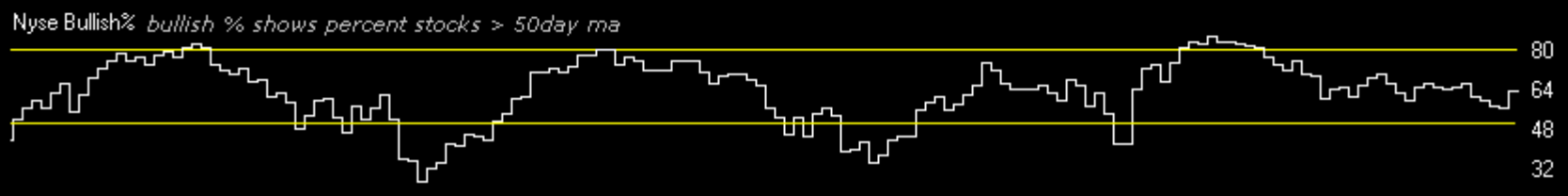
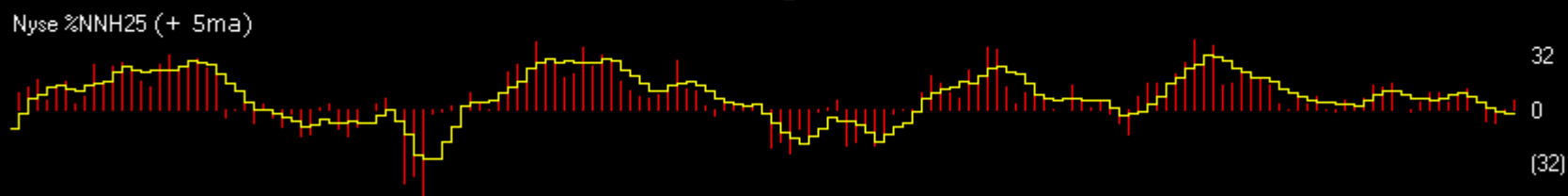
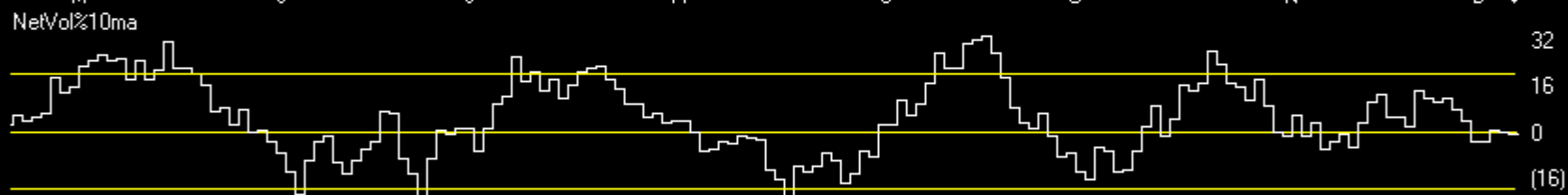
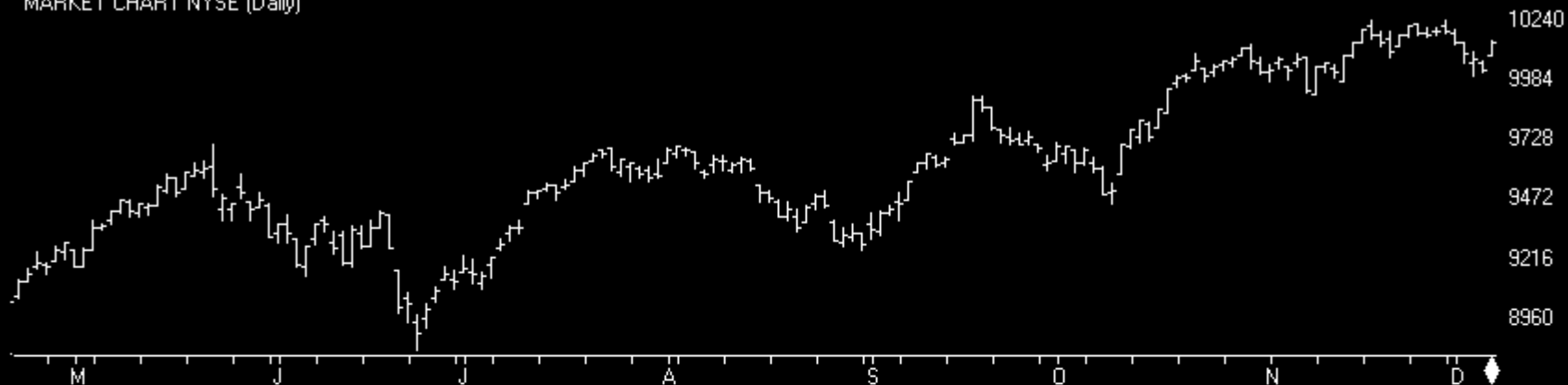
NetVol%10Wma



Market Charts

Charts by AIQ TradingExpert

MARKET CHART NYSE (Daily)



Market Charts

Charts by AIQ TradingExpert

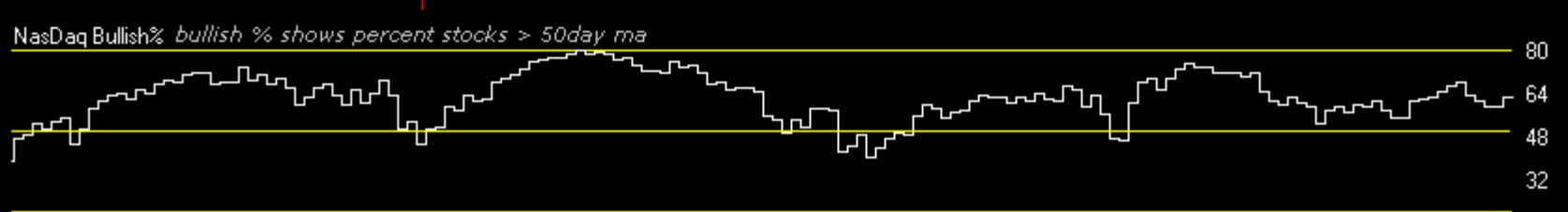
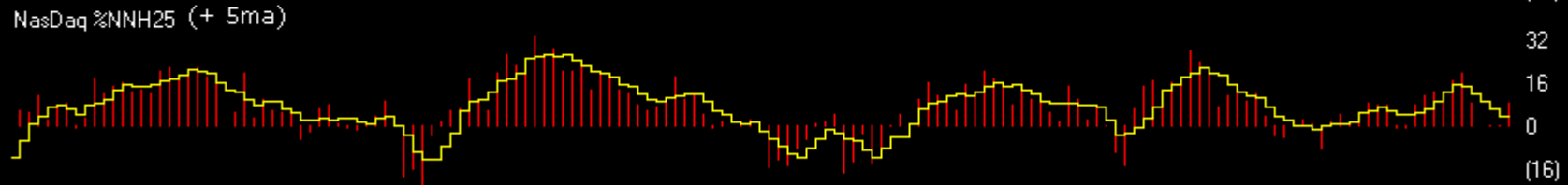
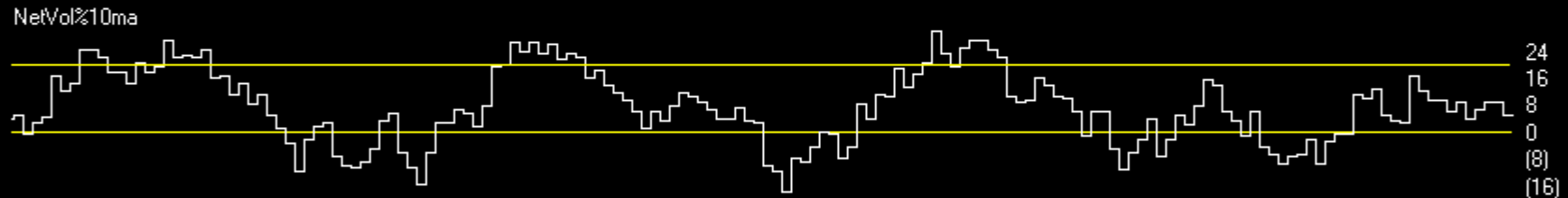
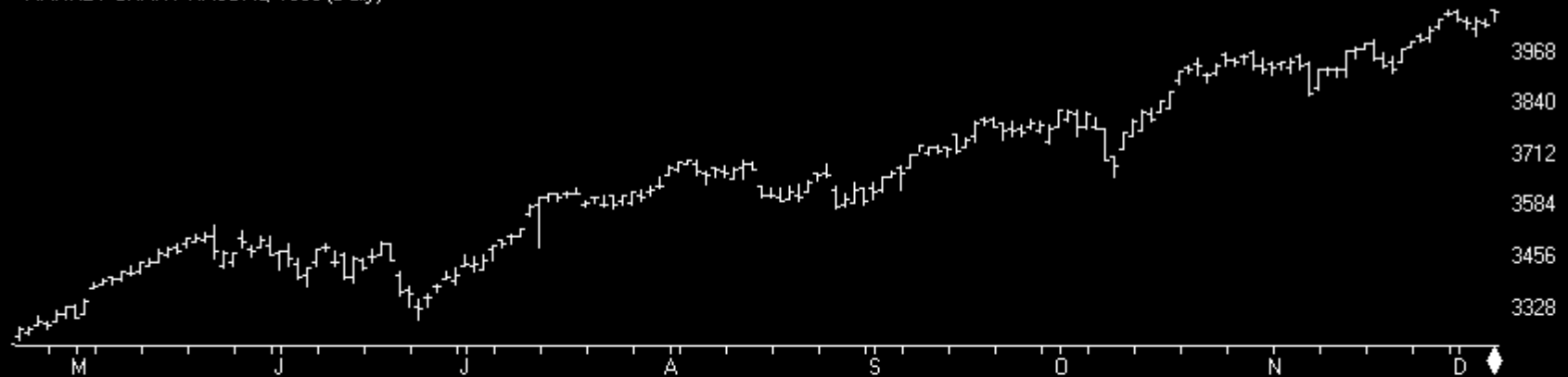
MARKET CHART NASDAQ 1800 (Weekly)+ Chartprofit Market Timing System (color study)



Market Charts

Charts by AIQ TradingExpert

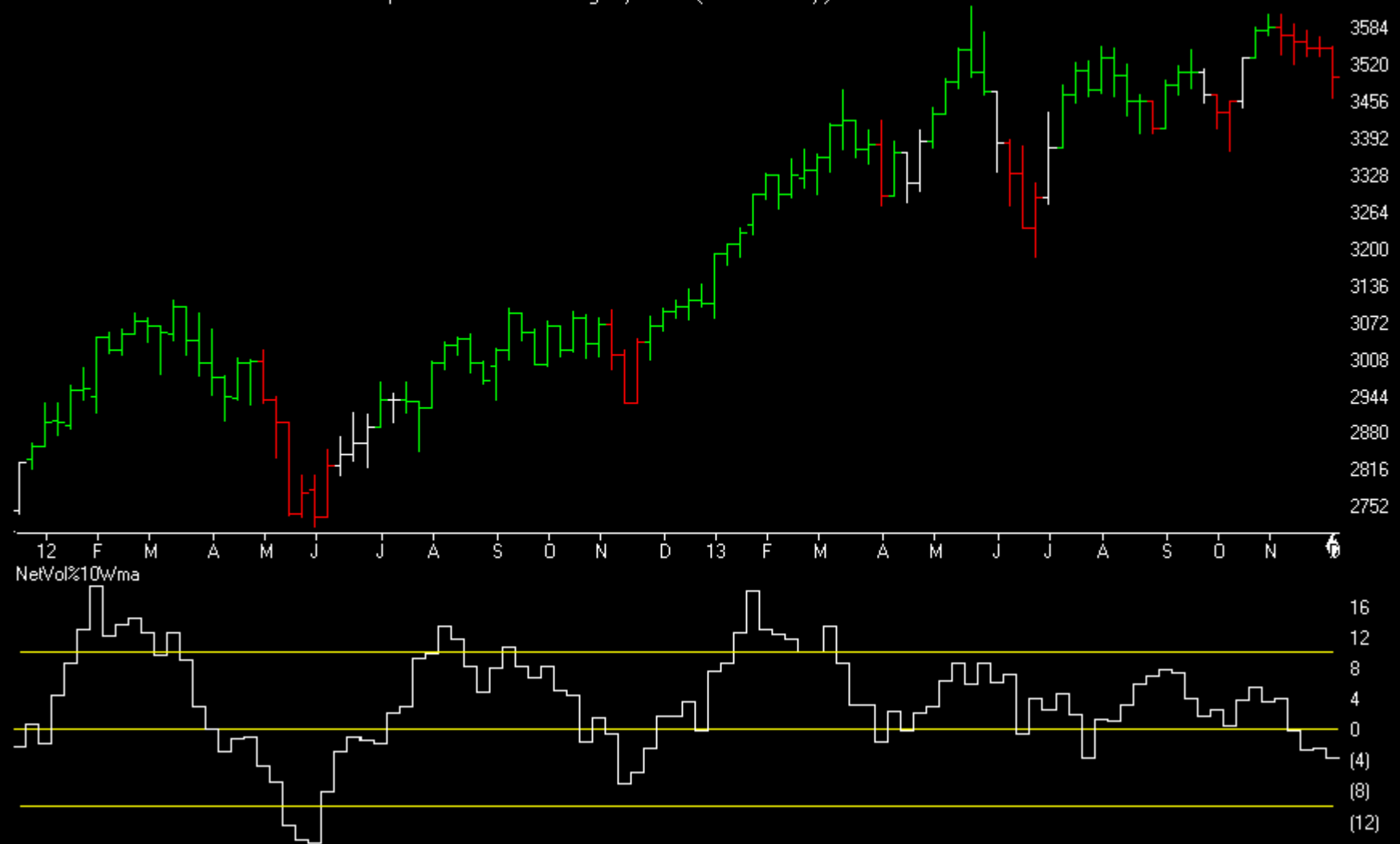
MARKET CHART NASDAQ 1800 (Daily)



Market Charts

Charts by AIQ TradingExpert

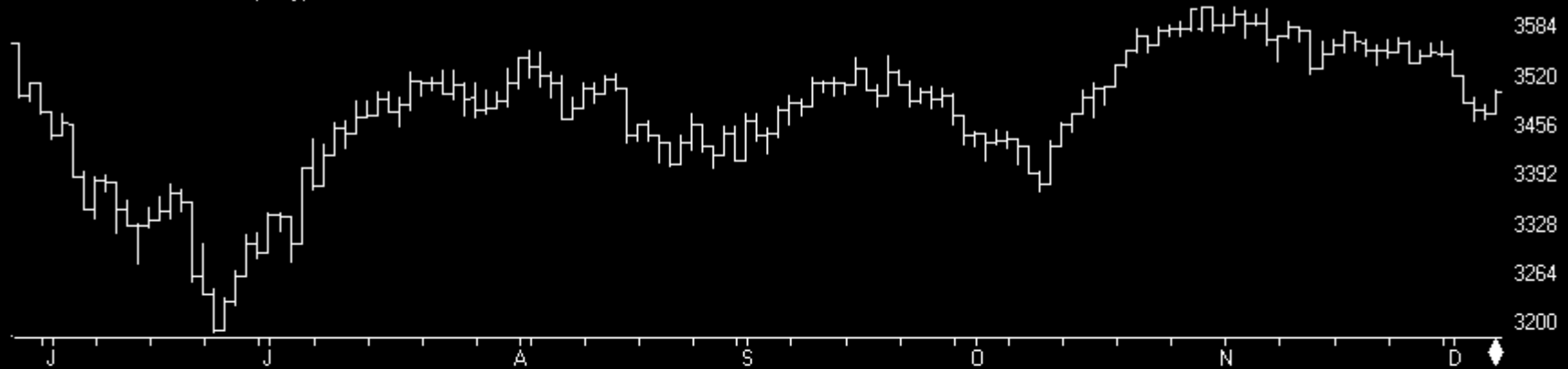
UK ALLSHARE MKT 2013 (Weekly) + Chartprofit Market Timing System (color study)



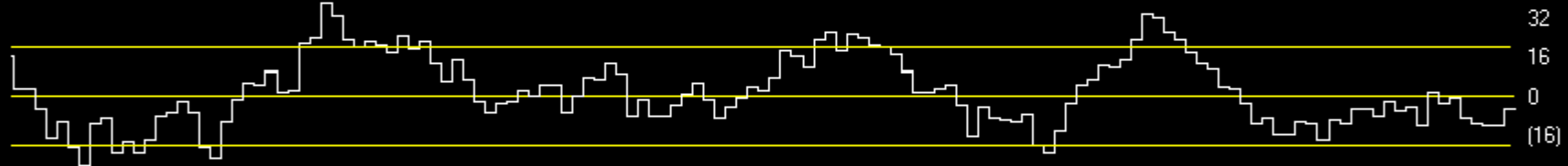
Market Charts

Charts by AIQ TradingExpert

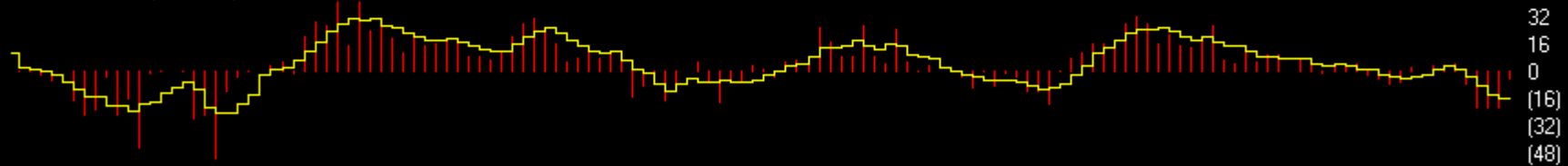
UK ALLSHARE MKT 2013 (Daily)



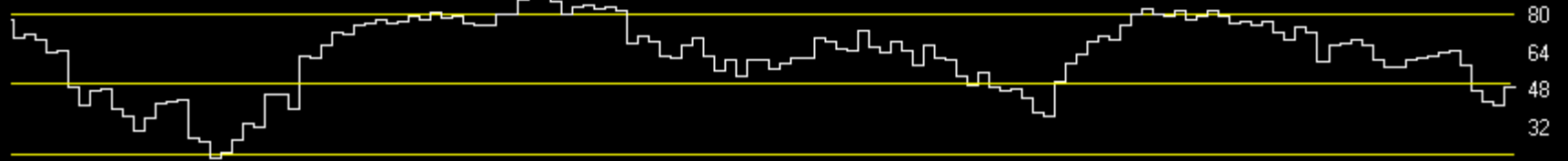
NetVol%10ma



UKA %NNH25 (+ 5ma)



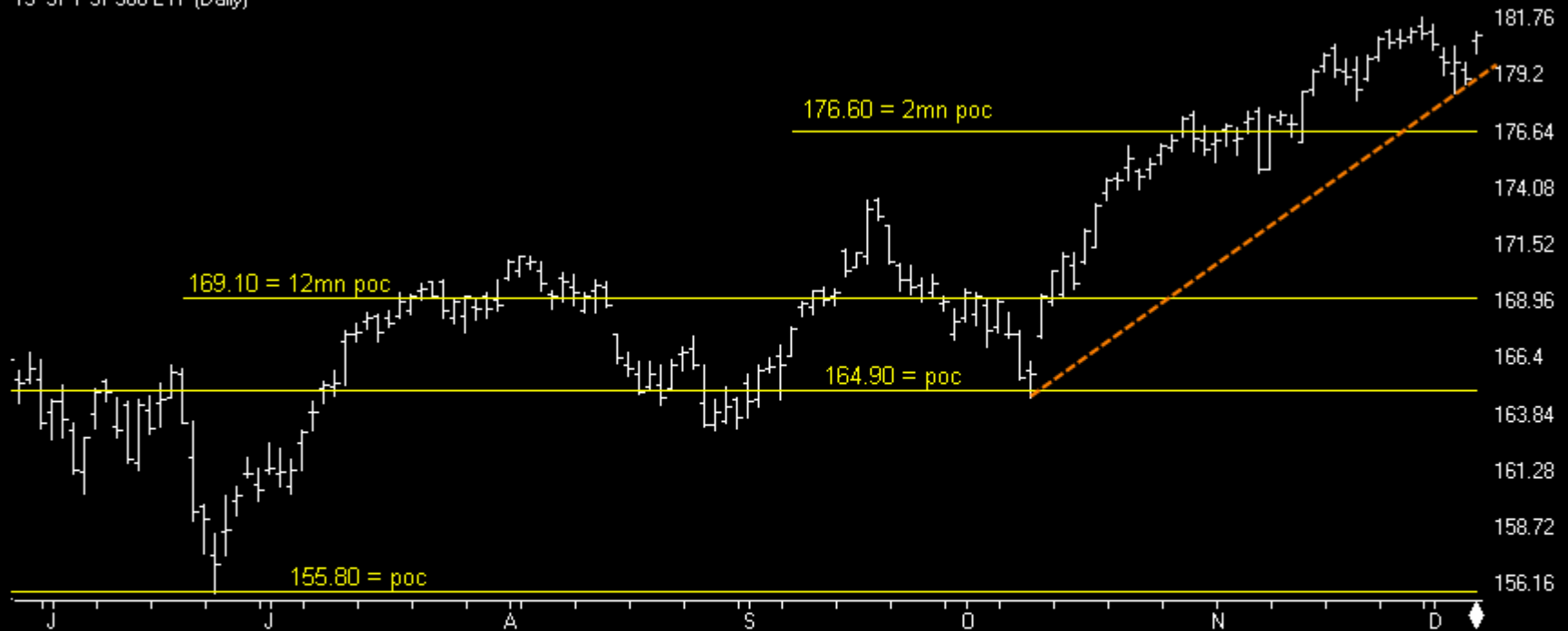
Allshare%St_50 bullish % shows percent stocks > 50day ma



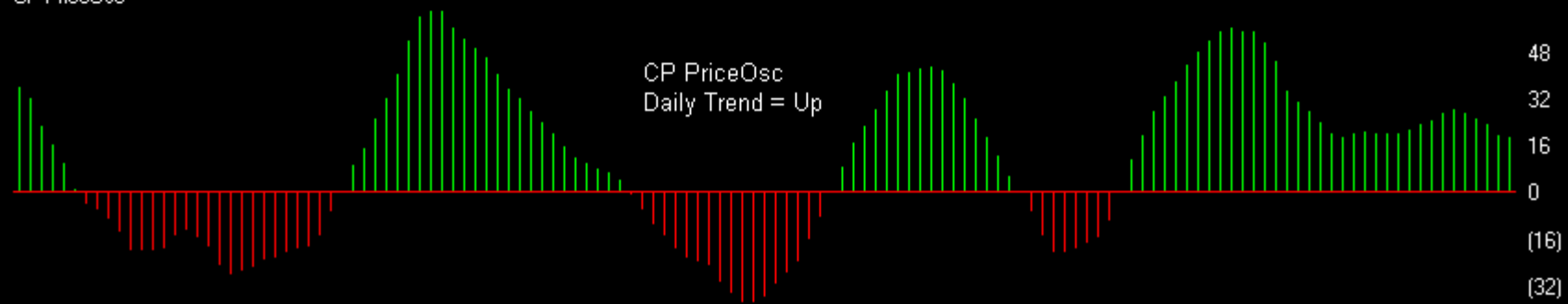
Index ETFs

Charts by AIQ TradingExpert

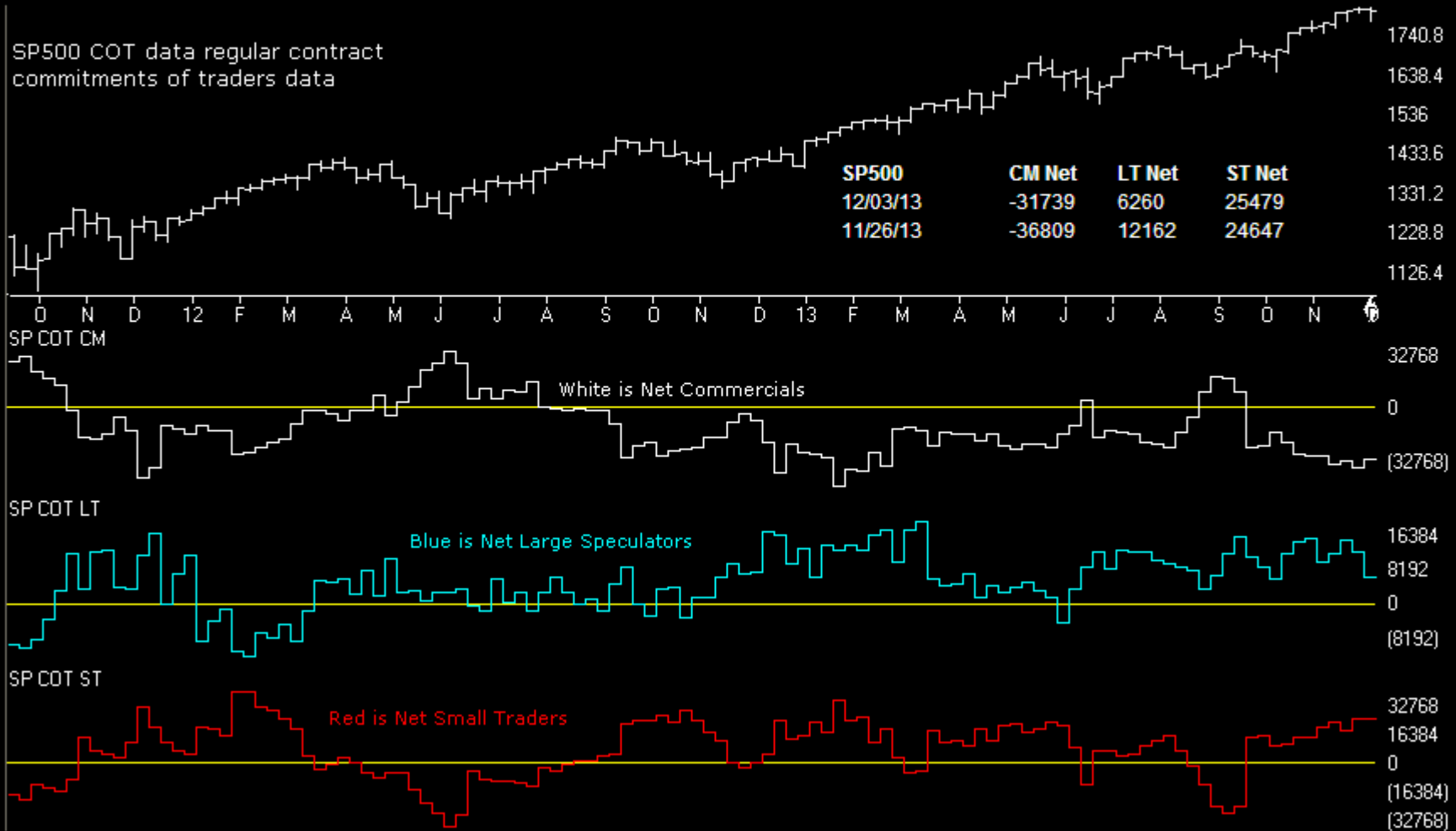
13 SPY SP500 ETF (Daily)



CP PriceOsc



SP500	CM Net	CM Long	CM Short	LT Net	LT Long	LT Short	ST Net	ST Long	ST Short
12/03/13	9.1	36.1	92.8	23.3	29.7	72.4	100.0	75.1	1.0
11/26/13	0.0	31.9	100.0	81.5	78.9	17.5	100.0	65.9	0.0



Index ETFs

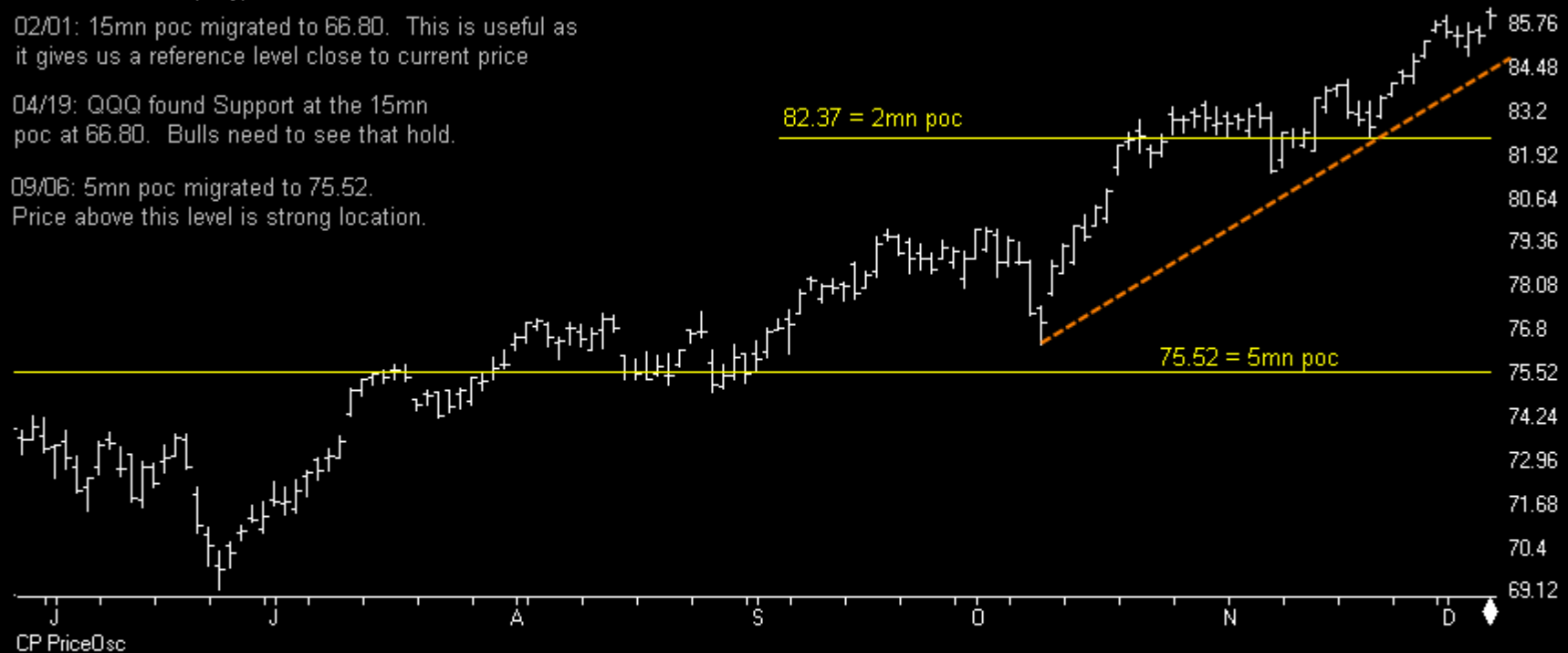
Charts by AIQ TradingExpert

12 QQQ N100 ETF (Daily)

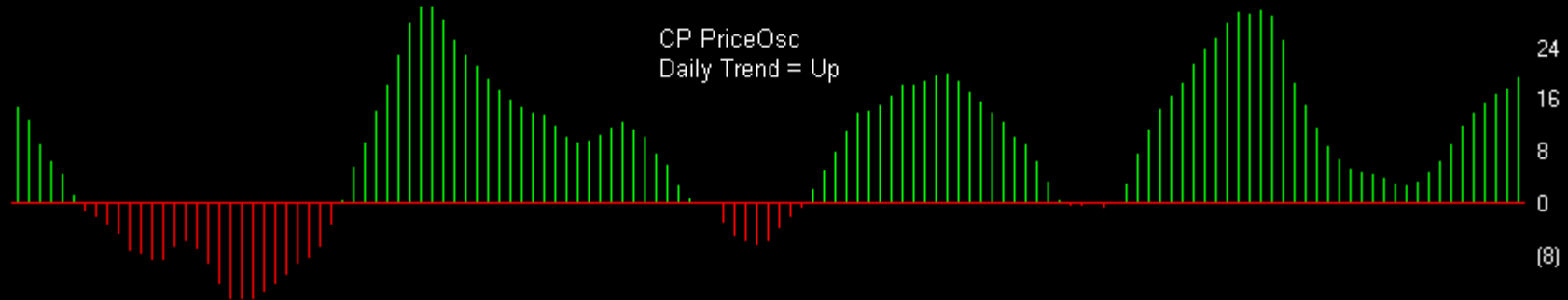
02/01: 15mn poc migrated to 66.80. This is useful as it gives us a reference level close to current price

04/19: QQQ found Support at the 15mn poc at 66.80. Bulls need to see that hold.

09/06: 5mn poc migrated to 75.52. Price above this level is strong location.



CP PriceOsc



Index ETFs

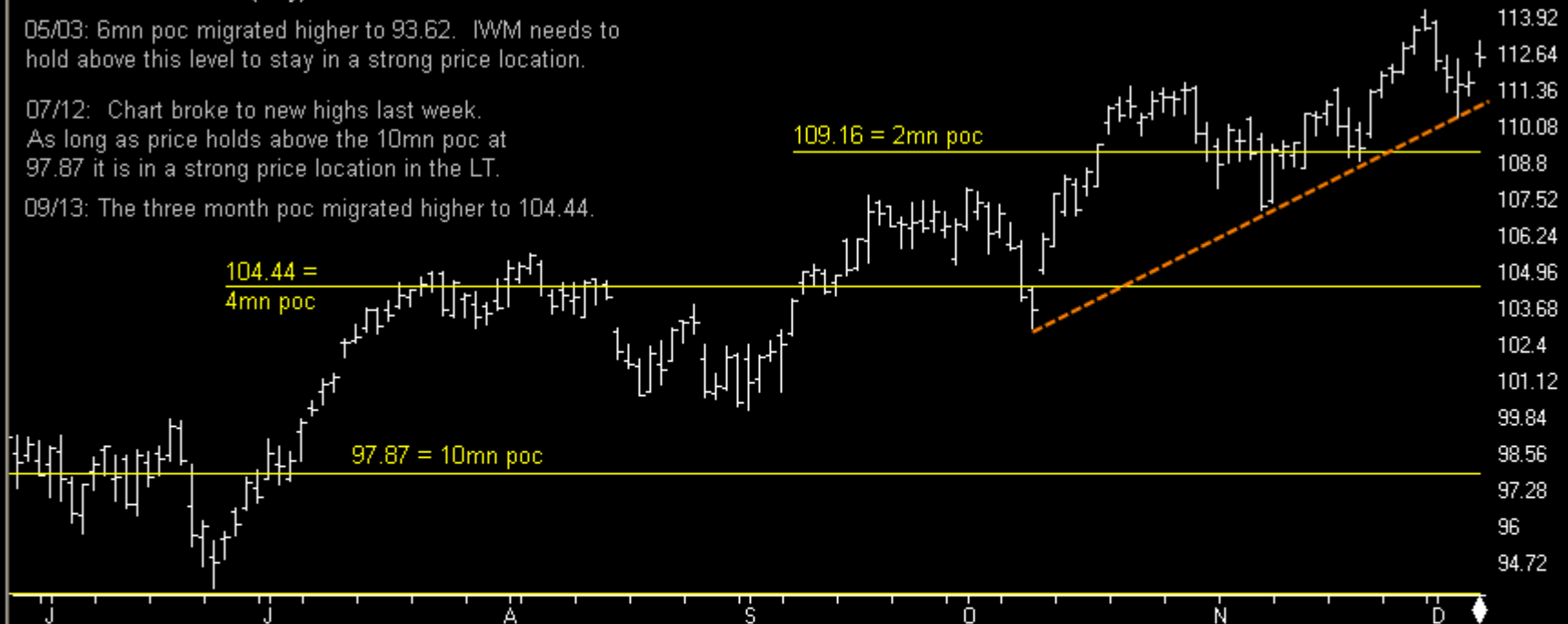
Charts by AIQ TradingExpert

11 IWM R2000 ETF (Daily)

05/03: 6mn poc migrated higher to 93.62. IWM needs to hold above this level to stay in a strong price location.

07/12: Chart broke to new highs last week. As long as price holds above the 10mn poc at 97.87 it is in a strong price location in the LT.

09/13: The three month poc migrated higher to 104.44.

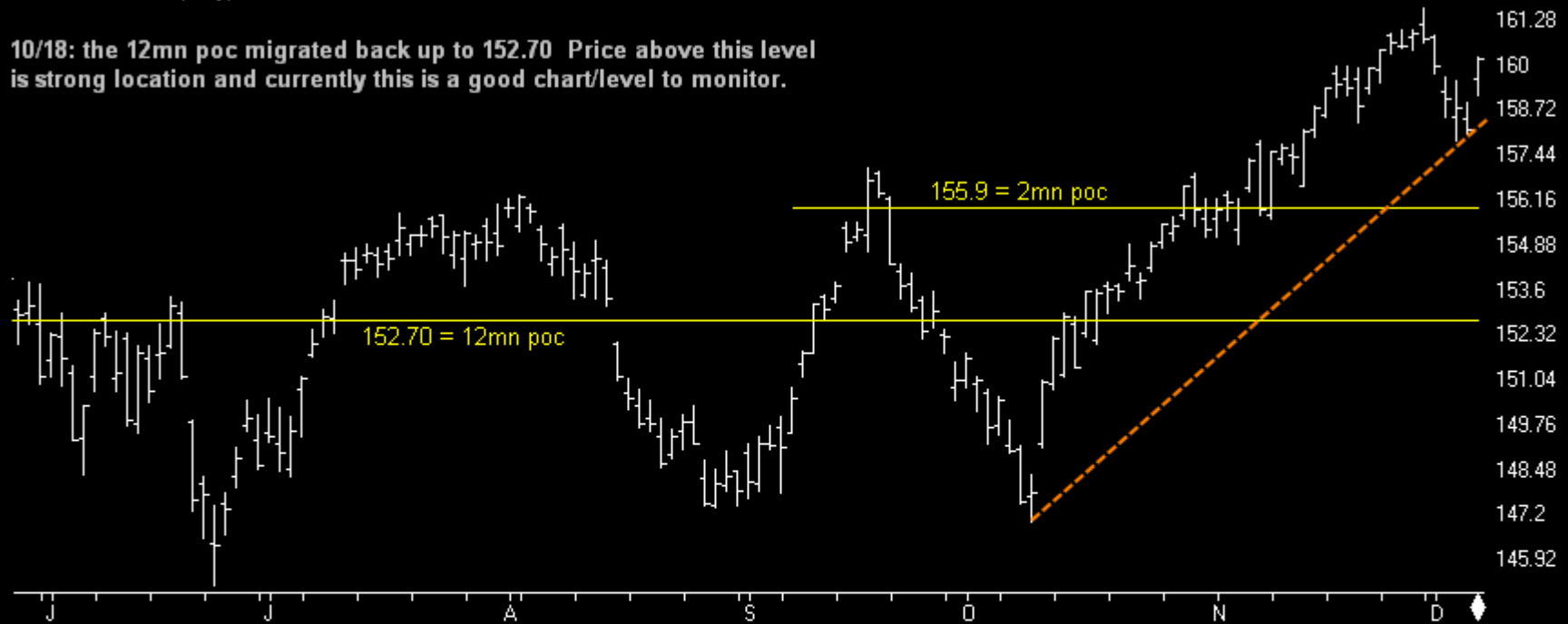


Index ETFs

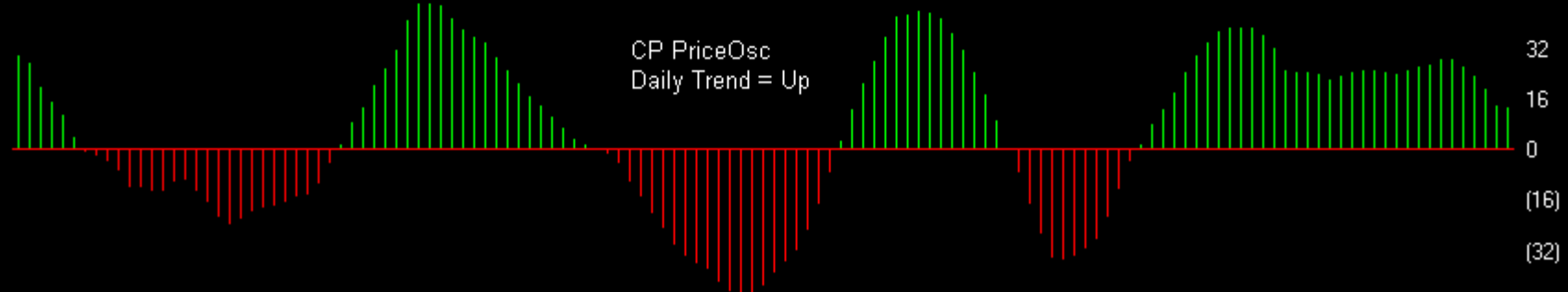
Charts by AIQ TradingExpert

10 DIA DOW ETF (Daily)

10/18: the 12mn poc migrated back up to 152.70 Price above this level is strong location and currently this is a good chart/level to monitor.



CP PriceOsc

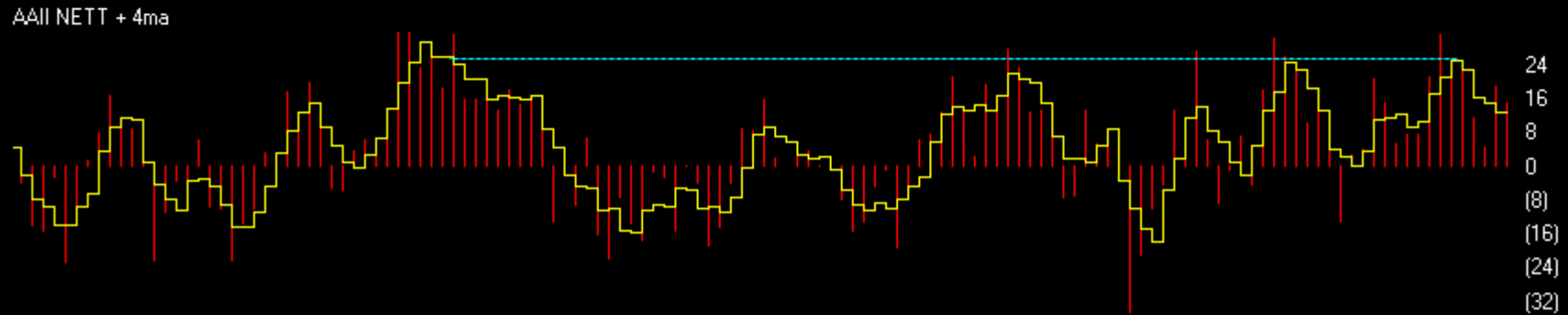
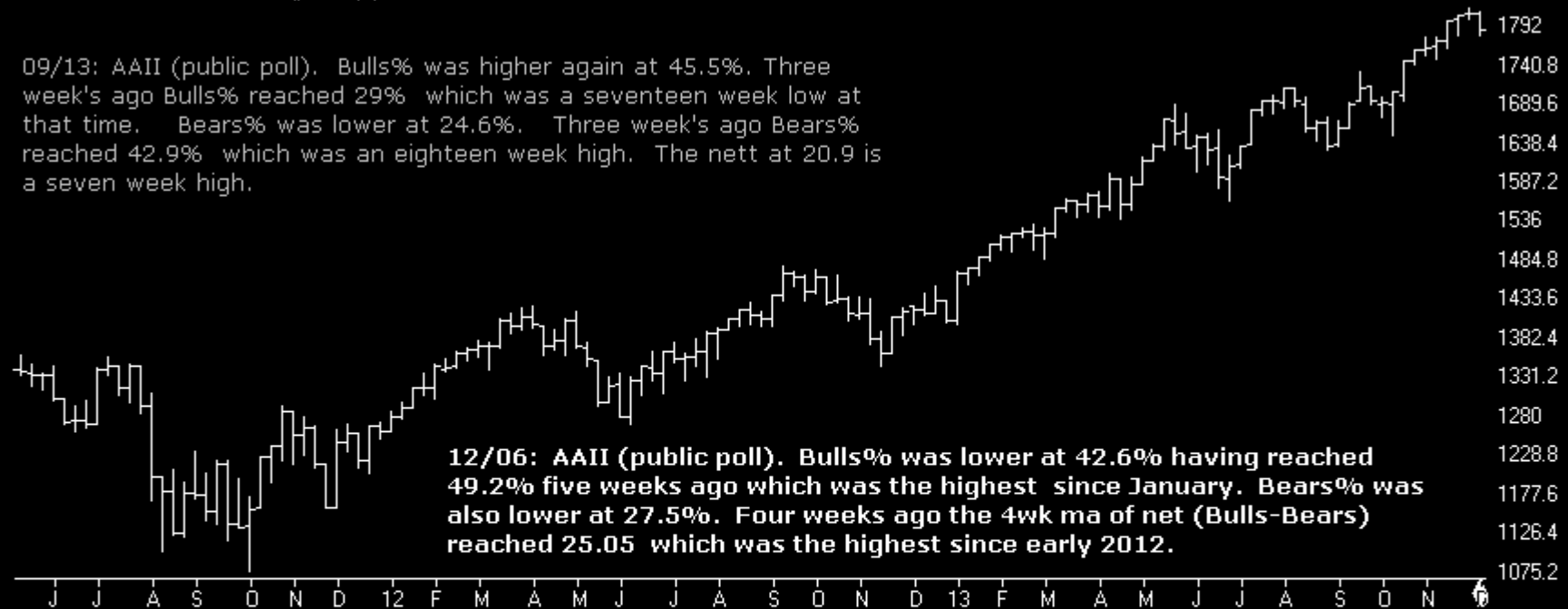


Sentiment

Charts by AIQ TradingExpert

SP500 Index (Weekly) + AII (public) poll

09/13: AII (public poll). Bulls% was higher again at 45.5%. Three week's ago Bulls% reached 29% which was a seventeen week low at that time. Bears% was lower at 24.6%. Three week's ago Bears% reached 42.9% which was an eighteen week high. The nett at 20.9 is a seven week high.

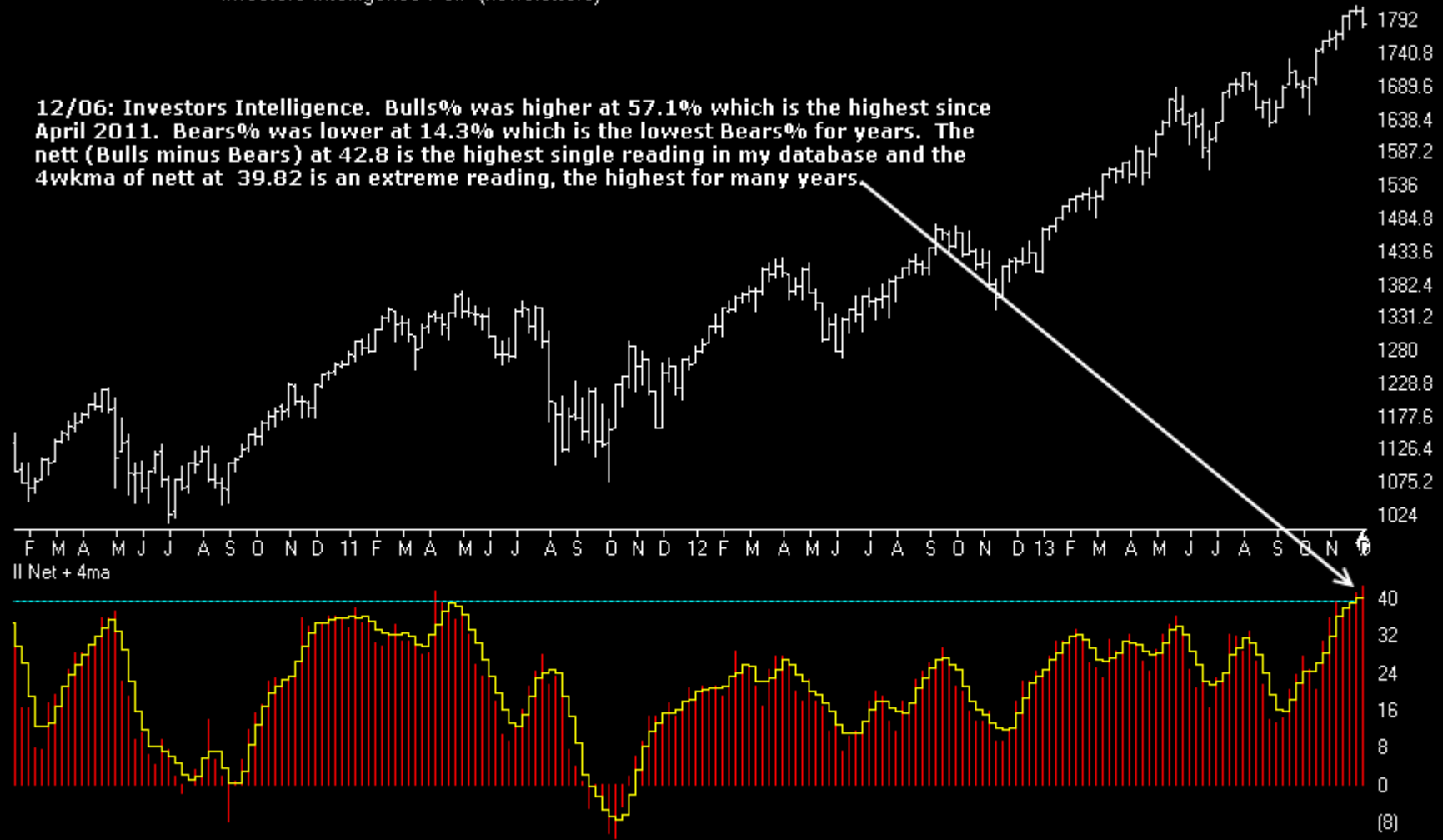


Sentiment

Charts by AIQ TradingExpert

SP500 Index (Weekly) + Investors Intelligence Poll (newsletters)

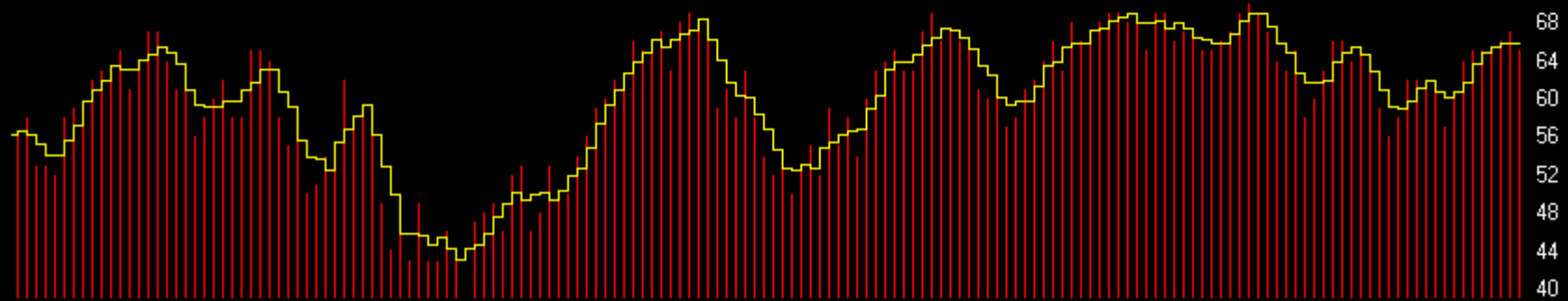
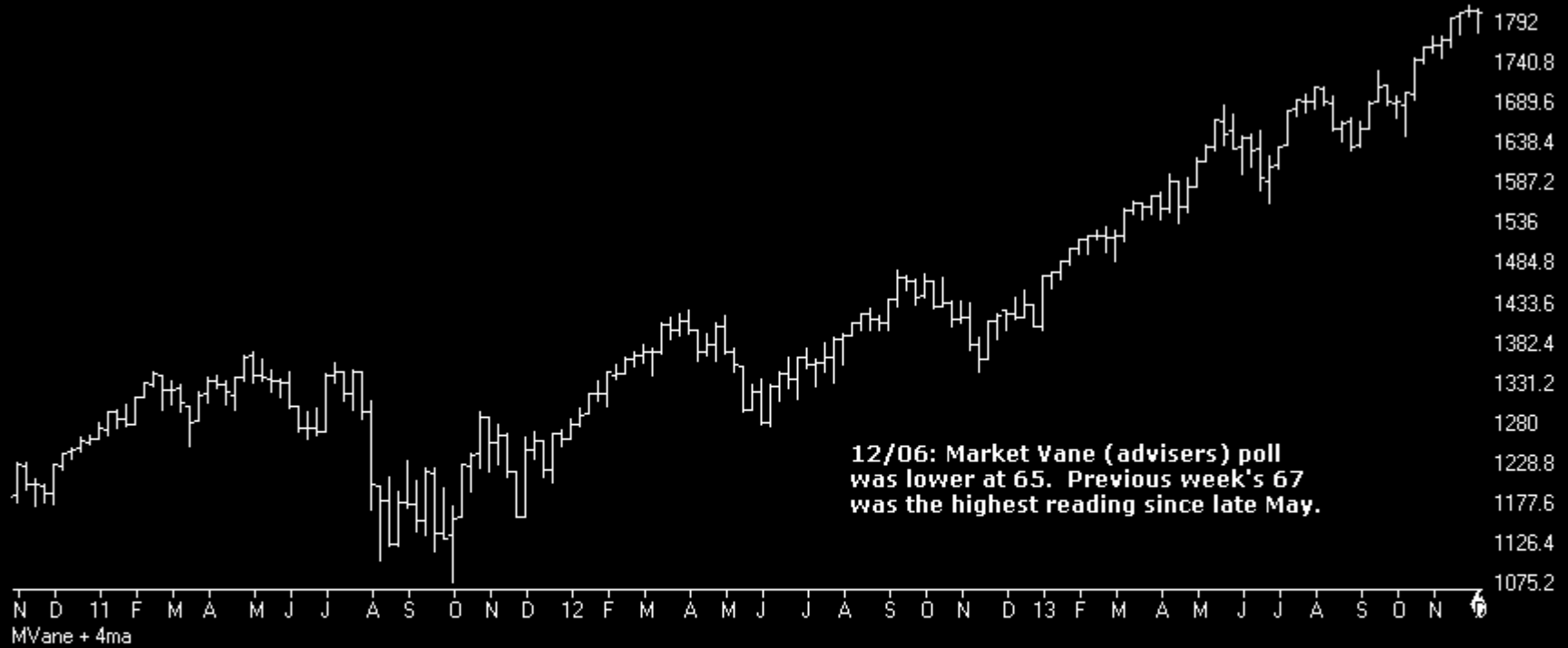
12/06: Investors Intelligence. Bulls% was higher at 57.1% which is the highest since April 2011. Bears% was lower at 14.3% which is the lowest Bears% for years. The nett (Bulls minus Bears) at 42.8 is the highest single reading in my database and the 4wkma of nett at 39.82 is an extreme reading, the highest for many years.



Sentiment

Charts by AIQ TradingExpert

SP500 Index (Weekly)

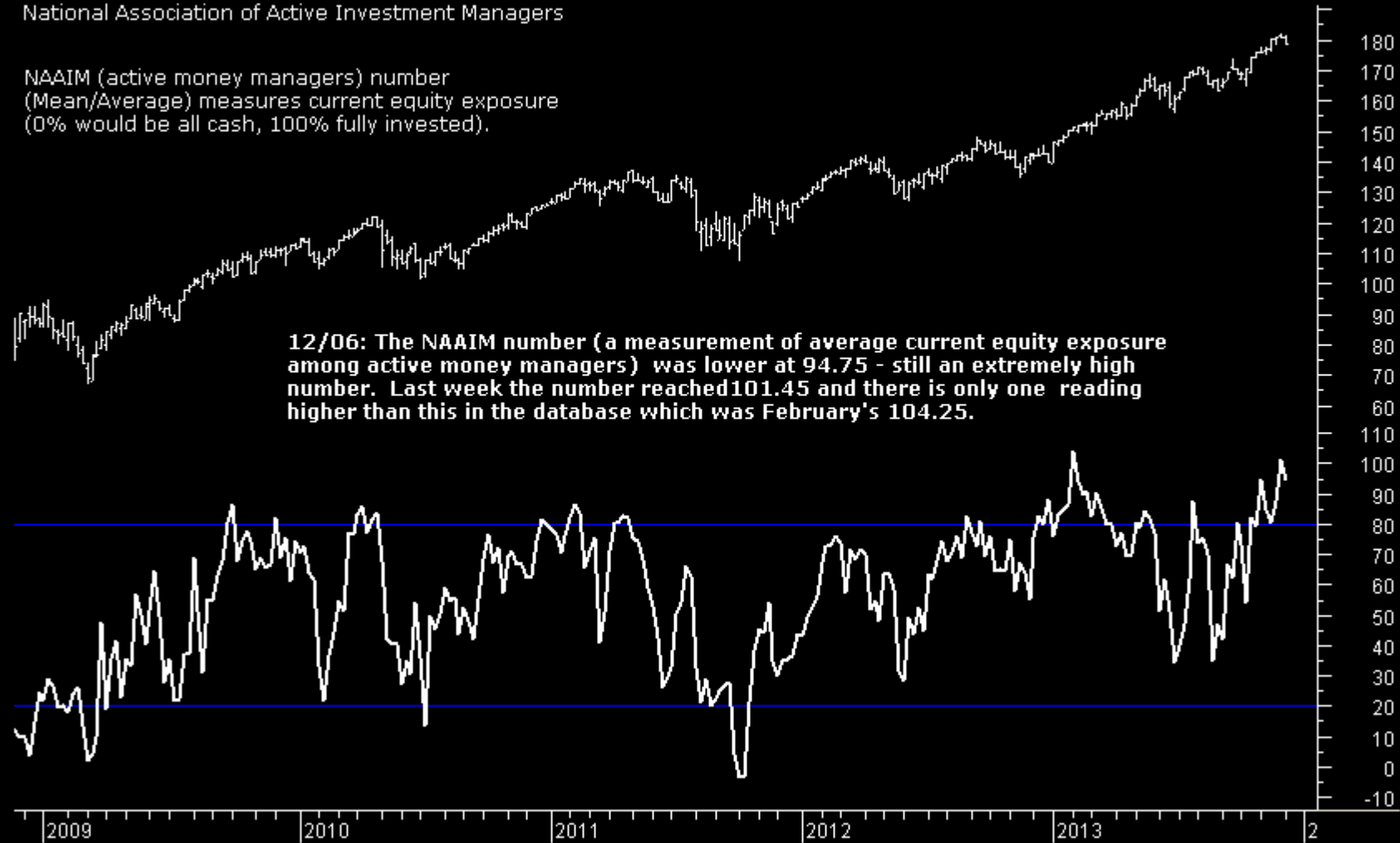


Sentiment

Charts by AIQ TradingExpert

SPY + NAAIM Number
National Association of Active Investment Managers

NAAIM (active money managers) number
(Mean/Average) measures current equity exposure
(0% would be all cash, 100% fully invested).



Sentiment

Charts by AIQ TradingExpert

SP500 Index (Daily) + OCC Calls% (equities only)

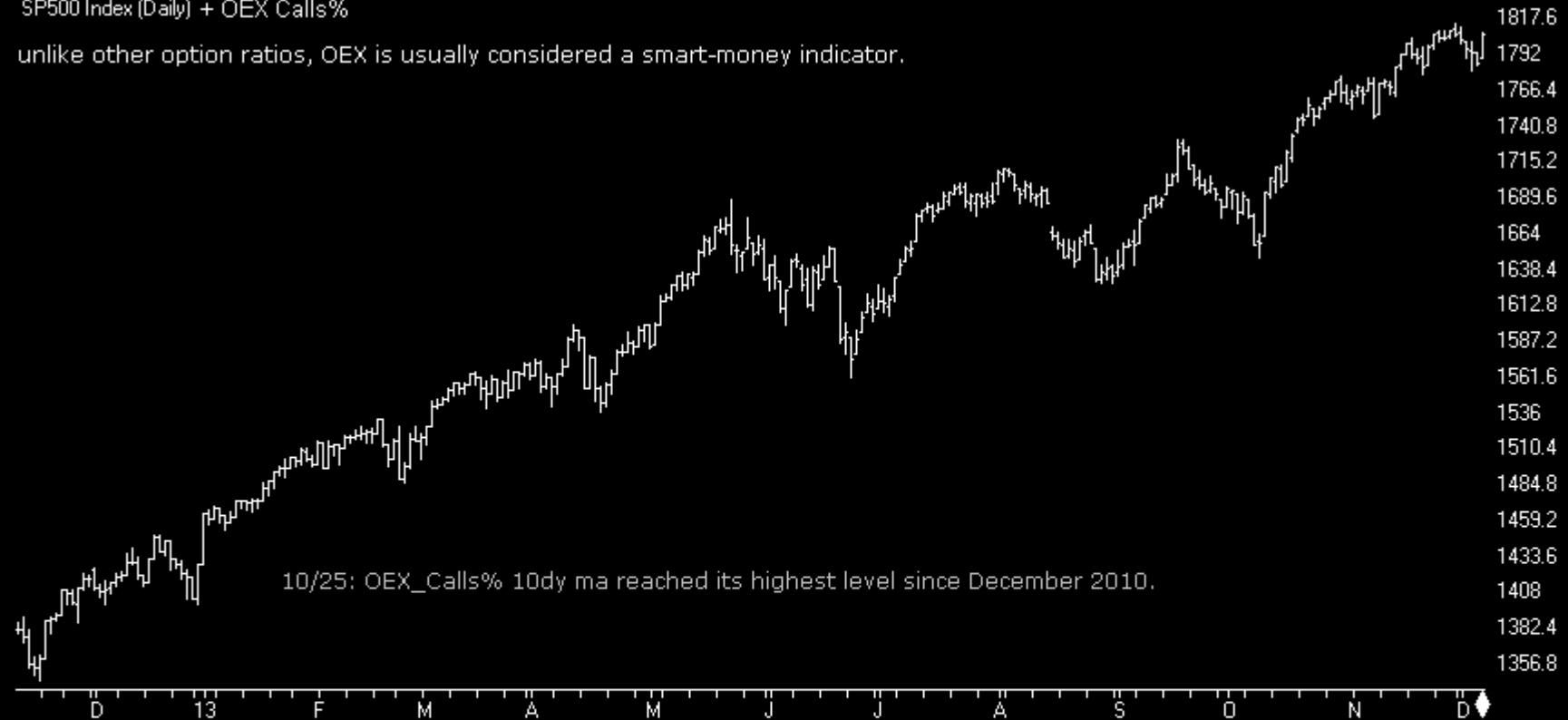


Sentiment

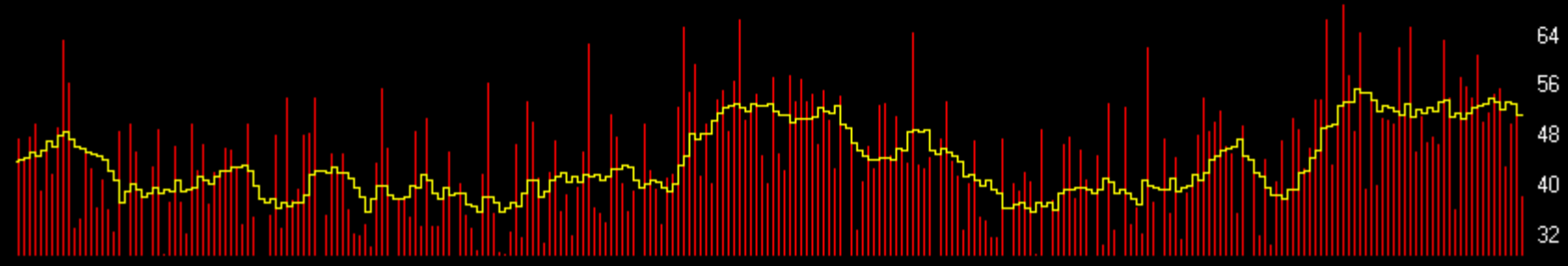
Charts by AIQ TradingExpert

SP500 Index (Daily) + OEX Calls%

unlike other option ratios, OEX is usually considered a smart-money indicator.



OEX Call% + 10ma

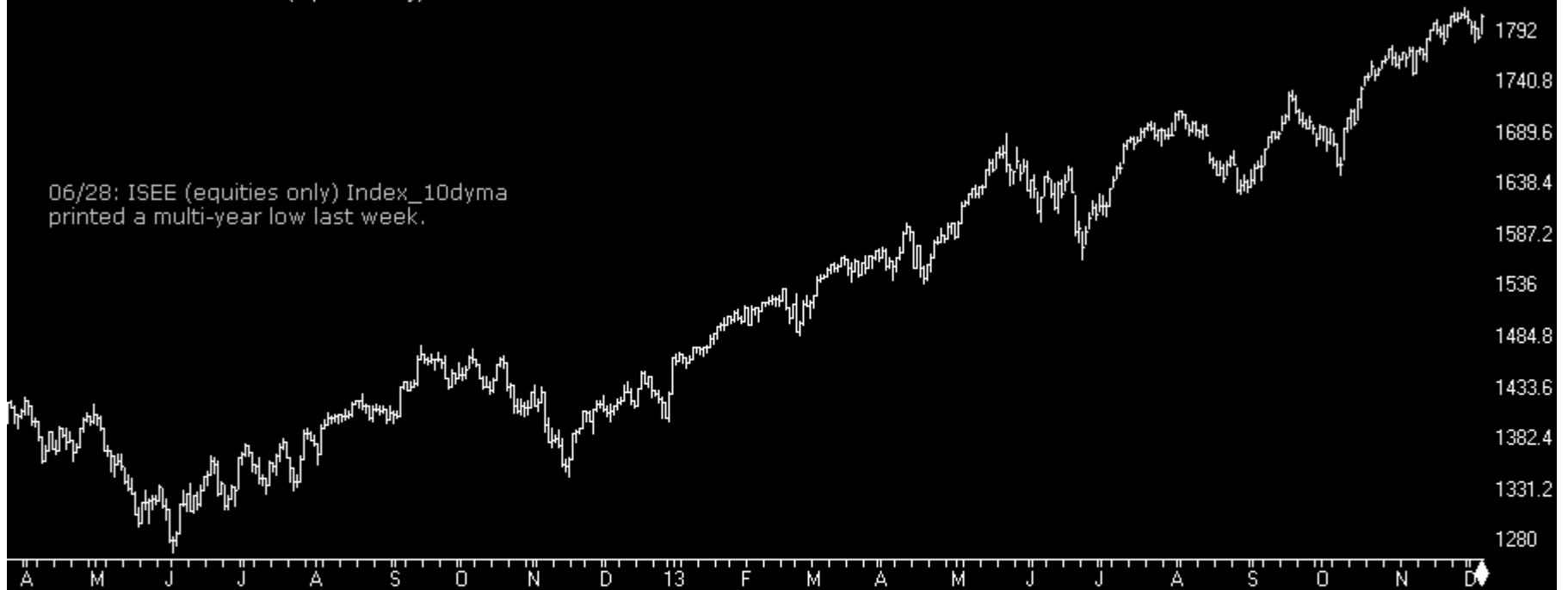


Sentiment

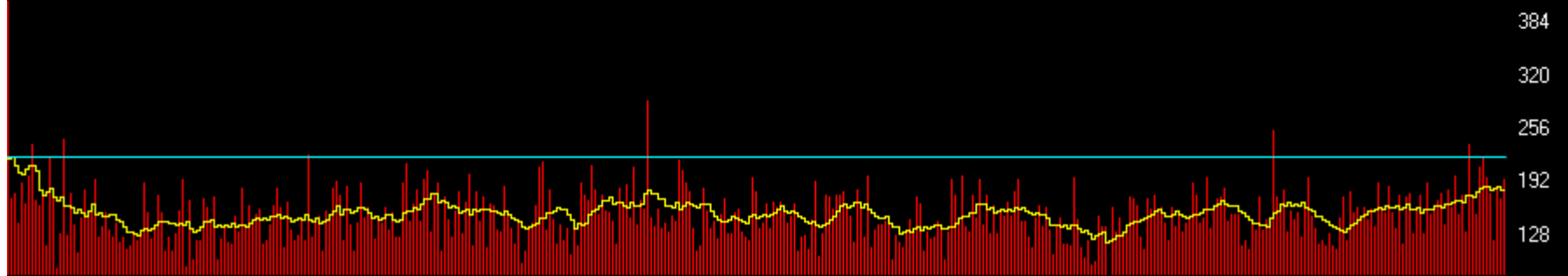
Charts by AIQ TradingExpert

SP500 Index (Daily) + ISEE (equities only)

06/28: ISEE (equities only) Index_10dyma printed a multi-year low last week.



SEE Equity+10ma

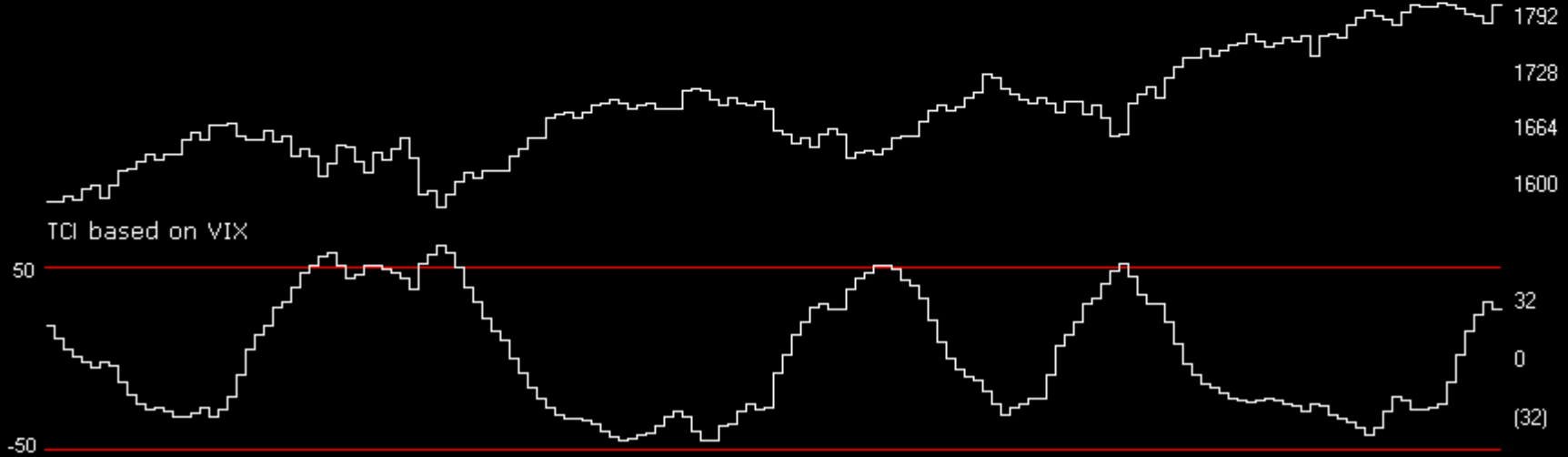
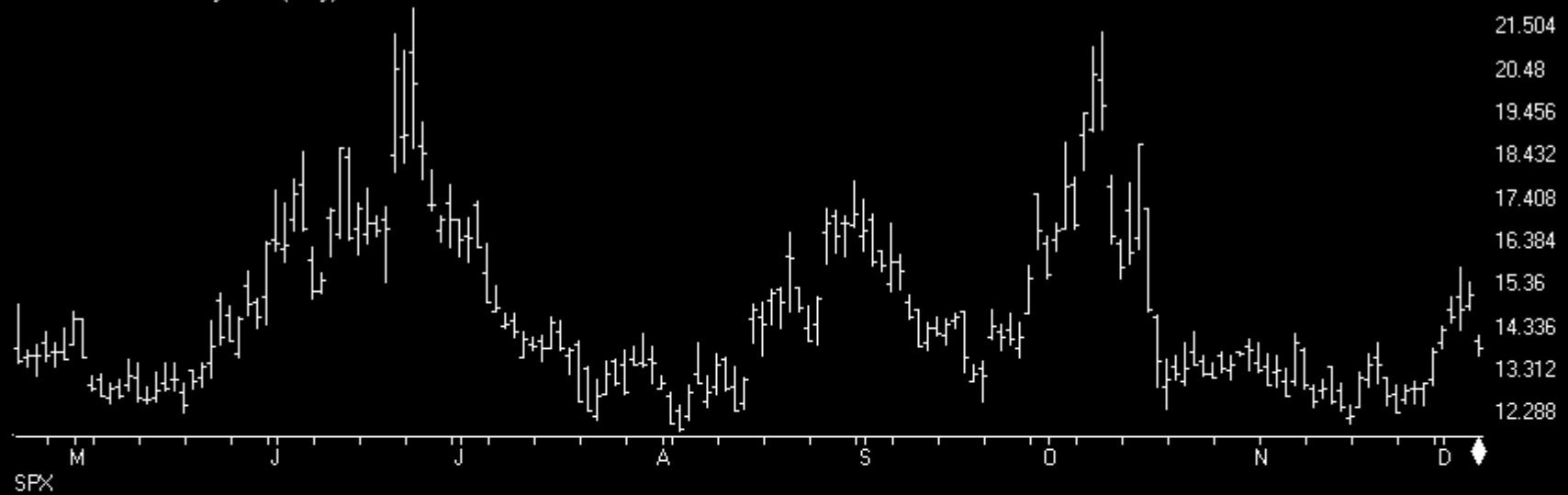


Sentiment

Charts by AIQ TradingExpert

VIX - S&P 500 Volatility Index (Daily)

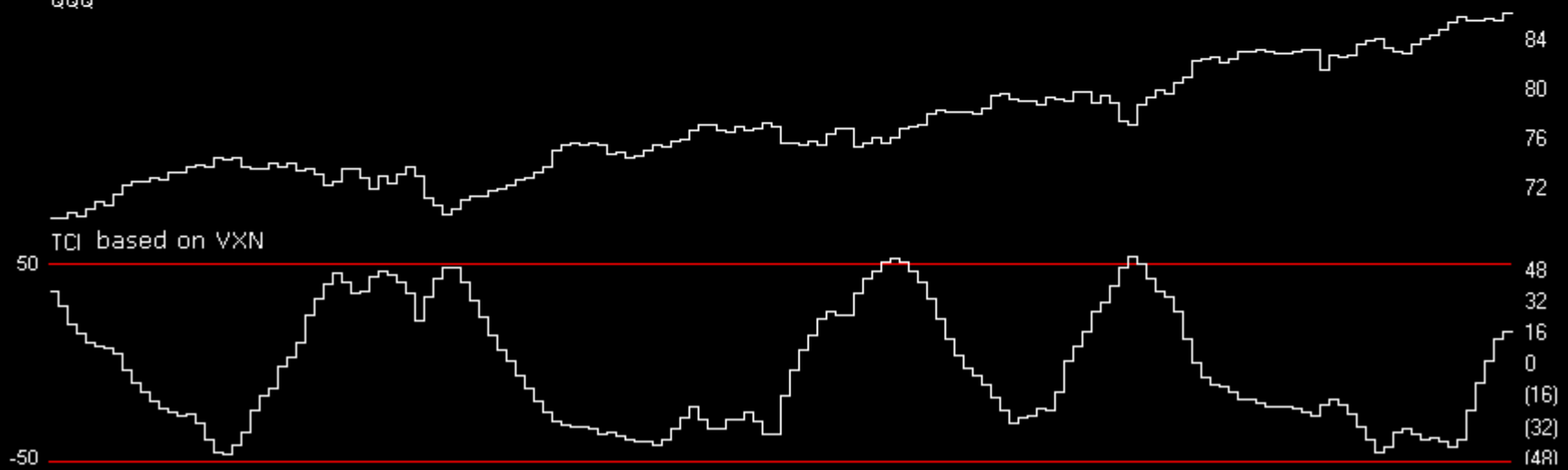
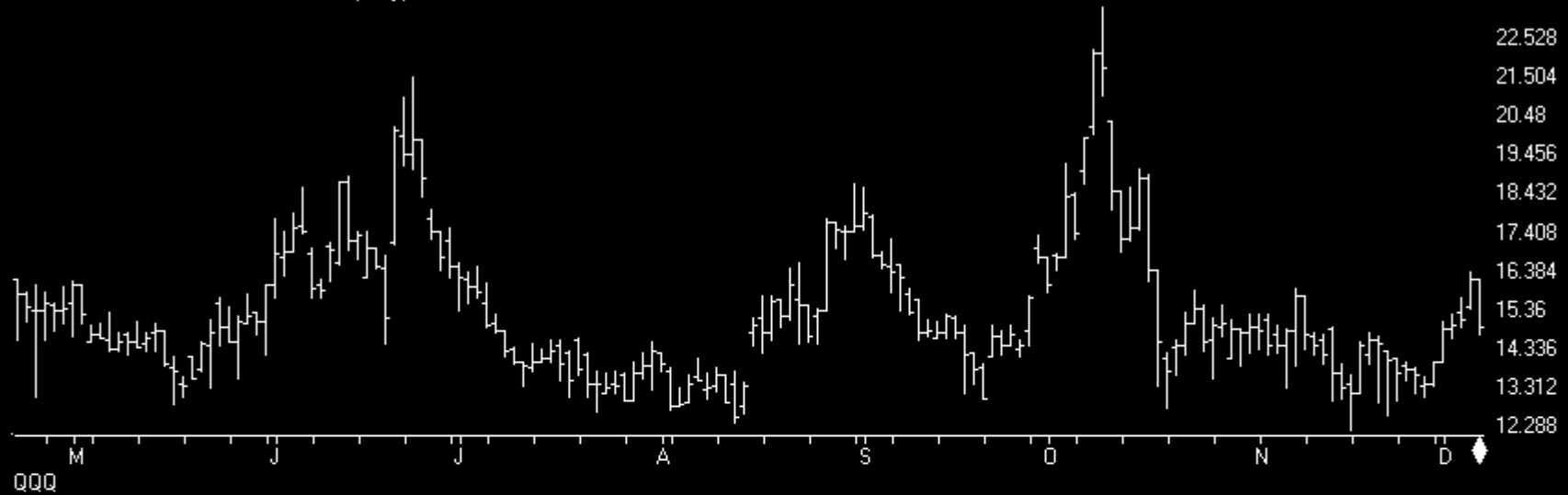
10/11: VIX reached 21.34 intraday on Wednesday. The highest level since 24th June.



Sentiment

Charts by AIQ TradingExpert

VXN - NASDAQ VOLATILITY INDEX (Daily)



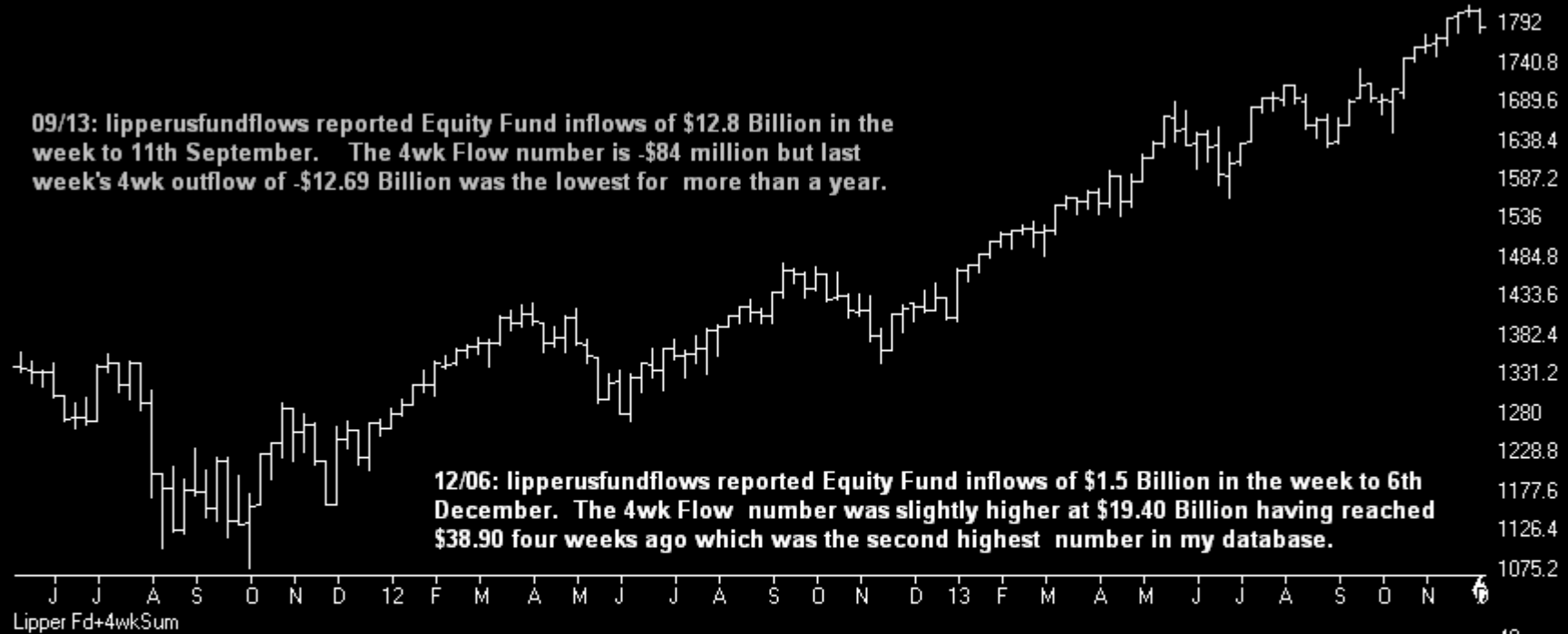
Sentiment

Charts by AIQ TradingExpert

SP500 Index (Weekly)

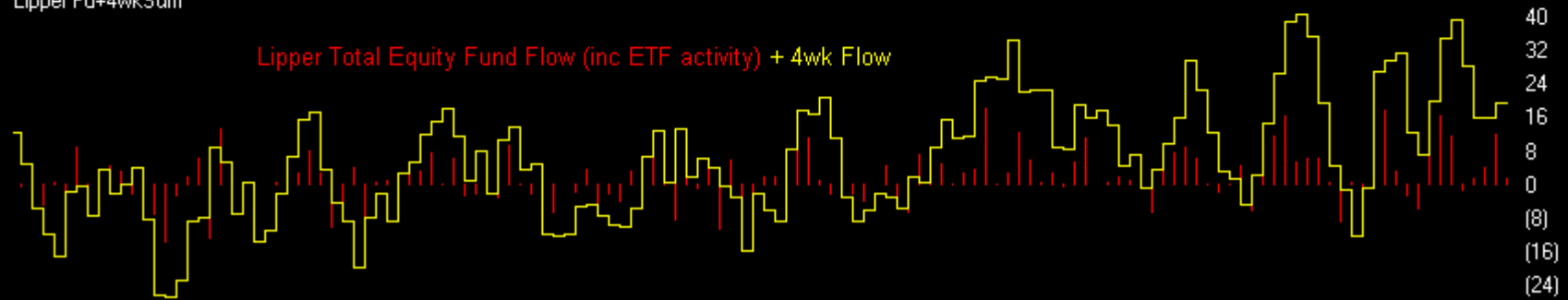
09/13: lipperusfundflows reported Equity Fund inflows of \$12.8 Billion in the week to 11th September. The 4wk Flow number is -\$84 million but last week's 4wk outflow of -\$12.69 Billion was the lowest for more than a year.

12/06: lipperusfundflows reported Equity Fund inflows of \$1.5 Billion in the week to 6th December. The 4wk Flow number was slightly higher at \$19.40 Billion having reached \$38.90 four weeks ago which was the second highest number in my database.



Lipper Fd+4wkSum

Lipper Total Equity Fund Flow (inc ETF activity) + 4wk Flow

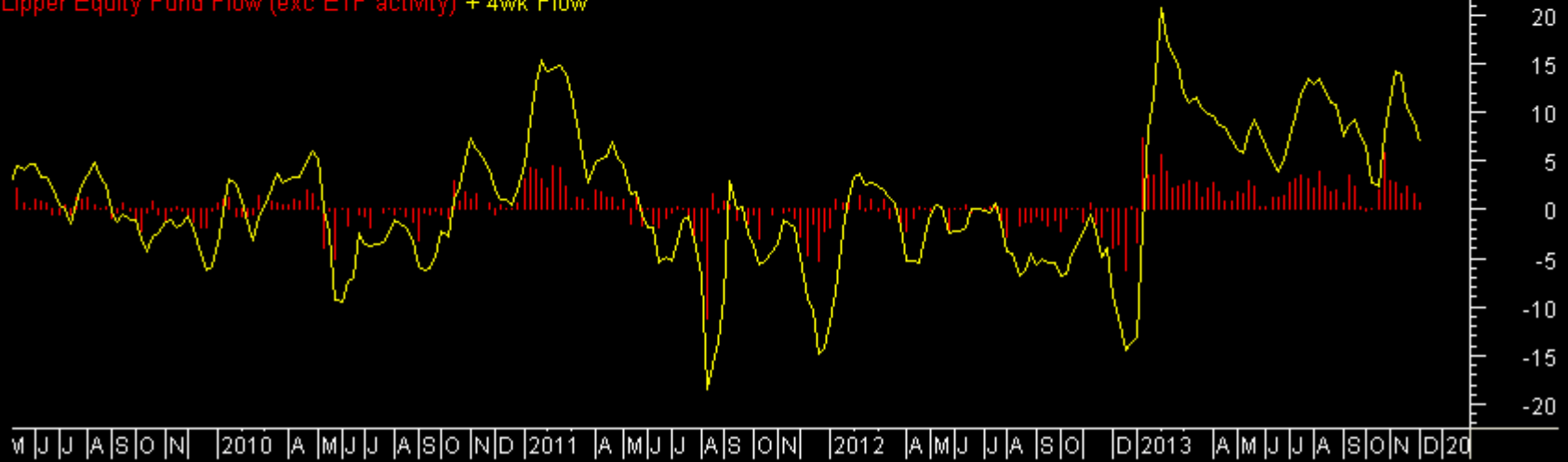


Sentiment

LIPPER Equity Fds (exc ETF) net flow (\$billion)

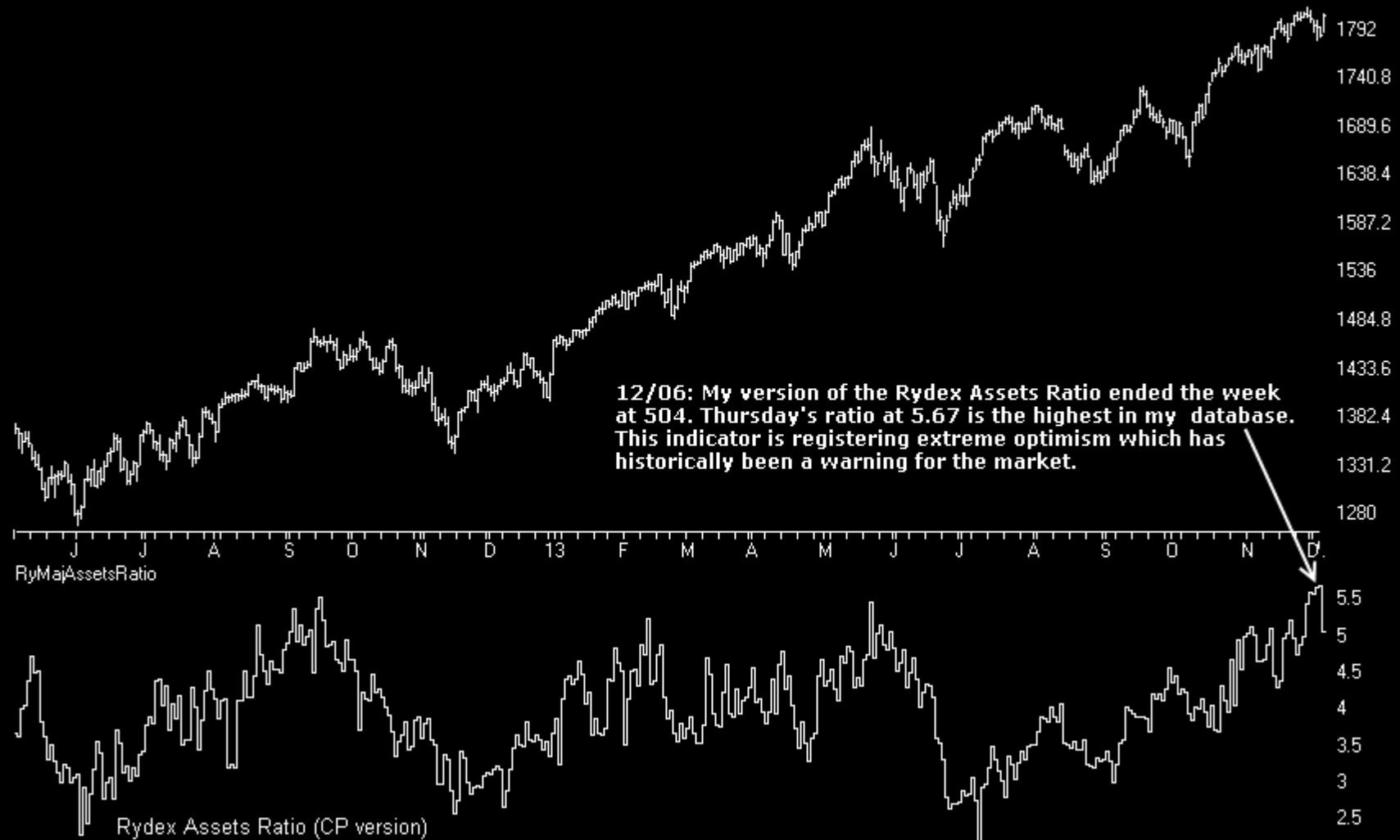


Lipper Equity Fund Flow (exc ETF activity) + 4wk Flow



Sentiment

SP500 Index (Daily) + Rydex Assets Ratio



Bonds

Charts by AIQ TradingExpert

30 Lehman 20+ Year T Bond ETF (Daily)

117.15 = maj poc

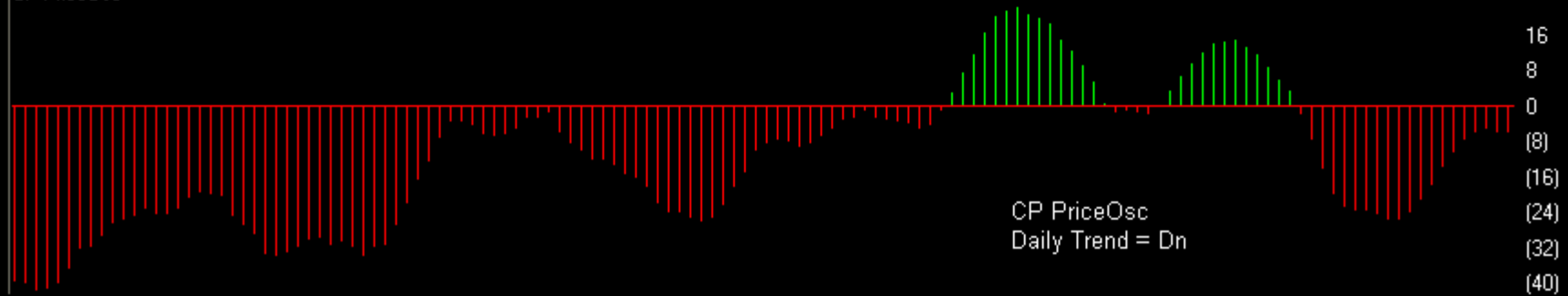
06/07: In a weak price location below 117.15, the major poc. On Tuesday chart printed its lowest level since April 2012.

11/01: chart ended the week below the 107.18 poc in a weaker price location.

106.31 = 8mn poc



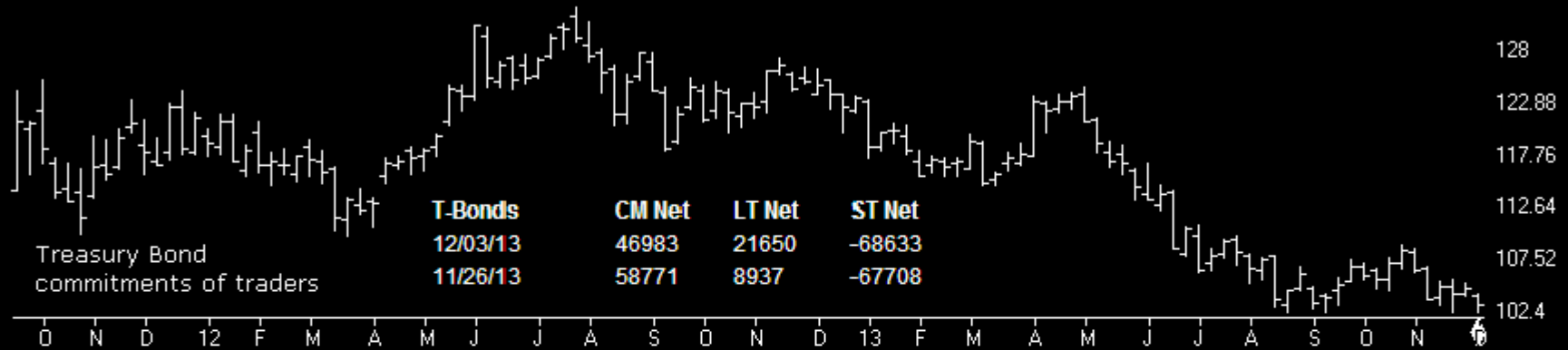
CP PriceOsc



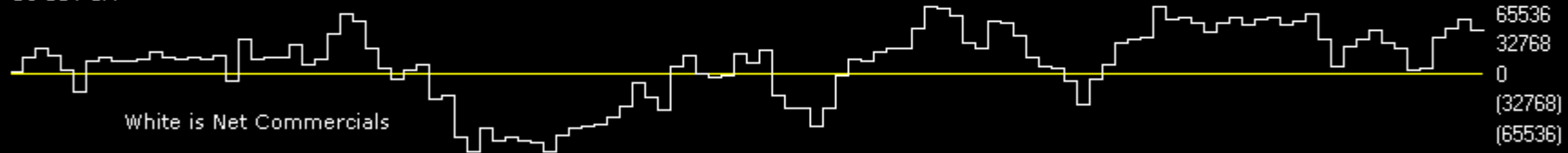
Bonds

Charts by AIQ TradingExpert

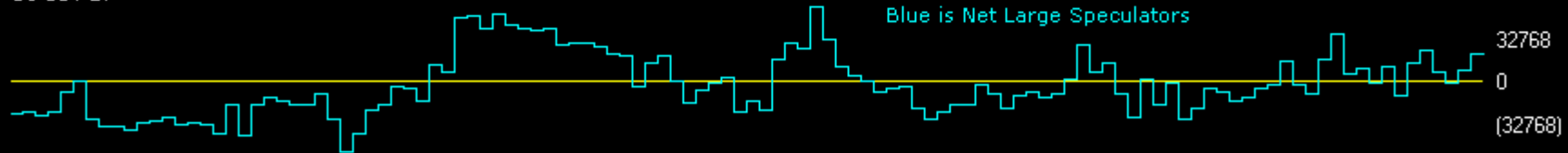
T-BONDS	CM Net	CM Long	CM Short	LT Net	LT Long	LT Short	ST Net	ST Long	ST Short
12/03/13	63.5	65.2	79.7	76.7	63.9	29.6	2.2	6.1	24.7
11/26/13	80.5	86.0	89.7	57.7	28.2	29.1	4.0	0.0	0.0



US COT CM



US COT LT



US COT ST



Gold

Charts by AIQ TradingExpert

STREETTRACKS GOLD TRUST ETF (Daily) (GLD)

10/11: Printed a 3month low last week and remains below 134.17, the 12mn poc, in a weak price location.



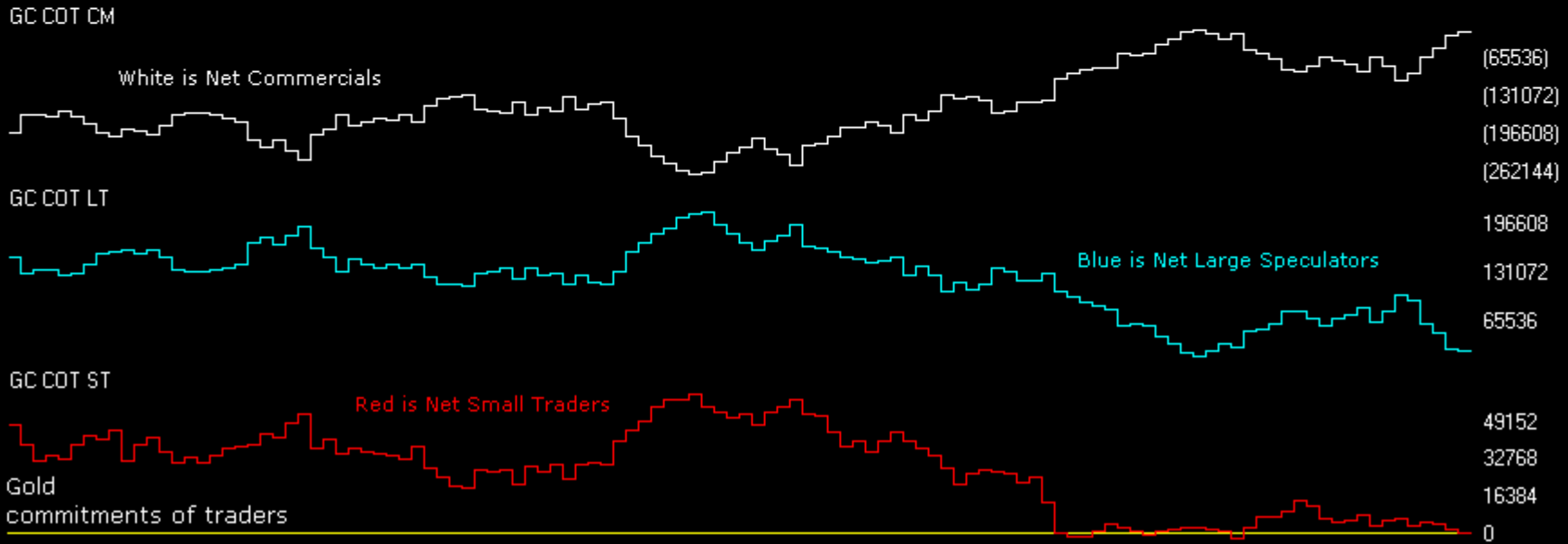
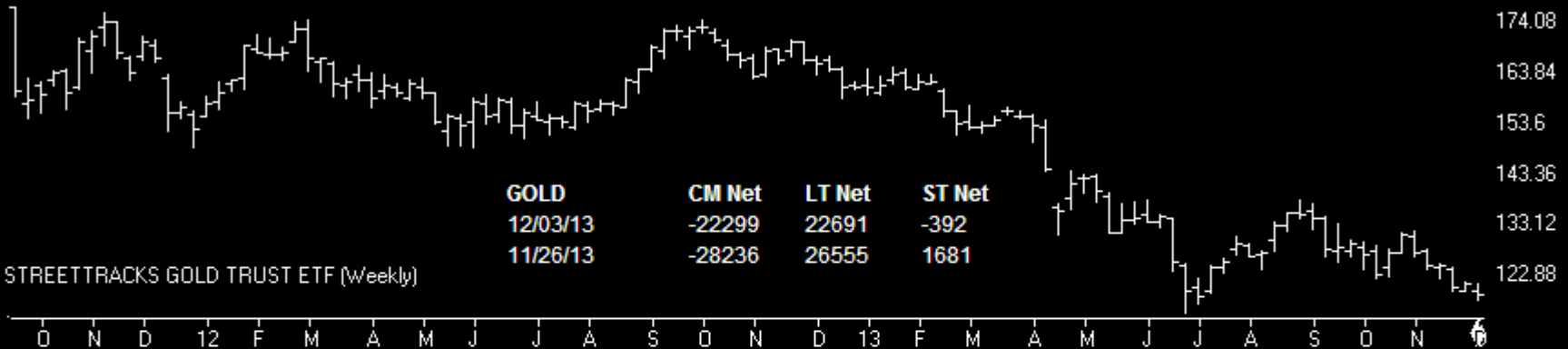
CP PriceOsc



Gold

Charts by AIQ TradingExpert

GOLD	CM Net	CM Long	CM Short	LT Net	LT Long	LT Short	ST Net	ST Long	ST Short
12/03/13	96.3	87.7	18.3	7.3	7.8	76.5	13	48.1	100
11/26/13	89.5	92.1	27	11.9	0	67.2	25.3	42.9	79.4



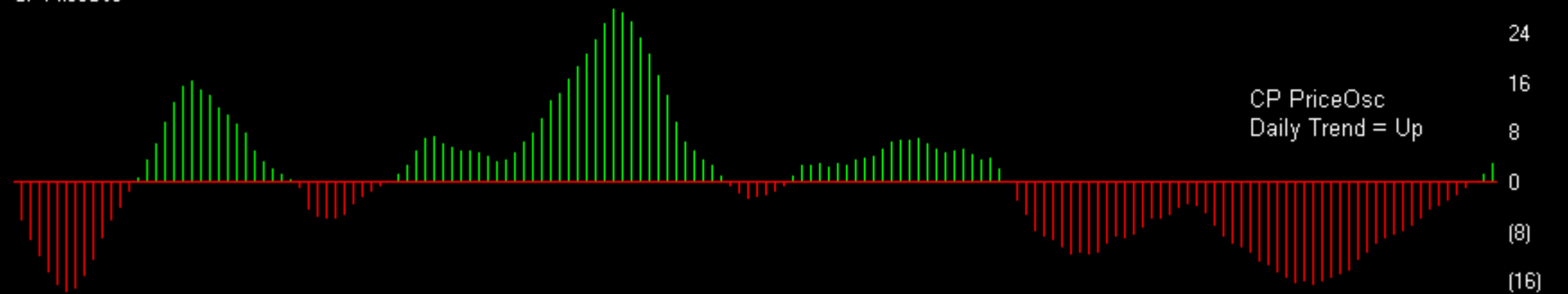
oil

Charts by AIQ TradingExpert

43 UNITED STATES OIL FUND (Daily) (USO)



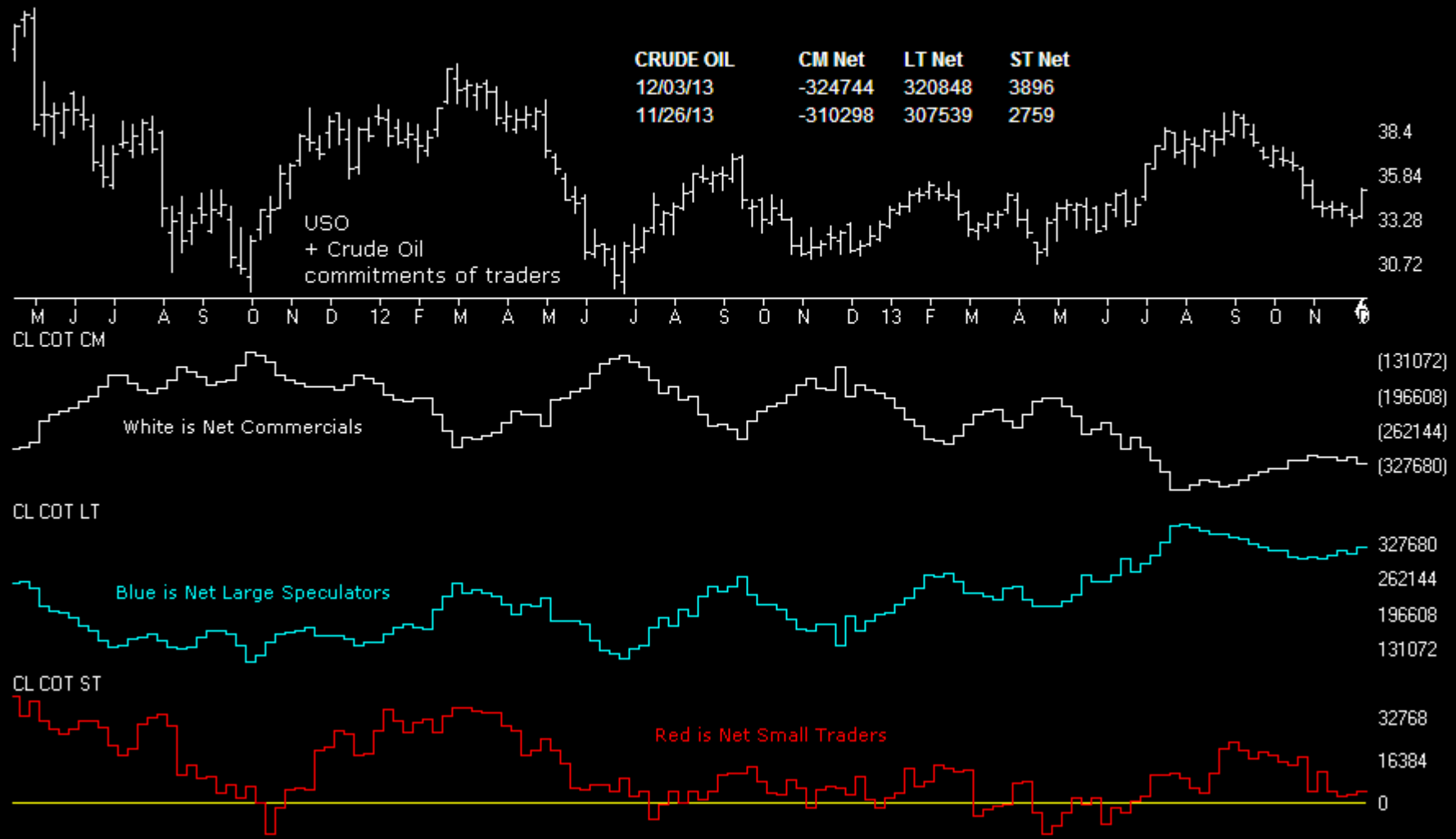
CP PriceOsc



Oil

Charts by AIQ TradingExpert

CRUDE OIL	CM Net	CM Long	CM Short	LT Net	LT Long	LT Short	ST Net	ST Long	ST Short
12/03/13	38.1	11.3	68.1	60.7	100.0	90.9	39.1	36.6	61.9
11/26/13	49.7	40.1	69.5	48.3	100.0	81.0	35.5	38.9	66.9



Dollar

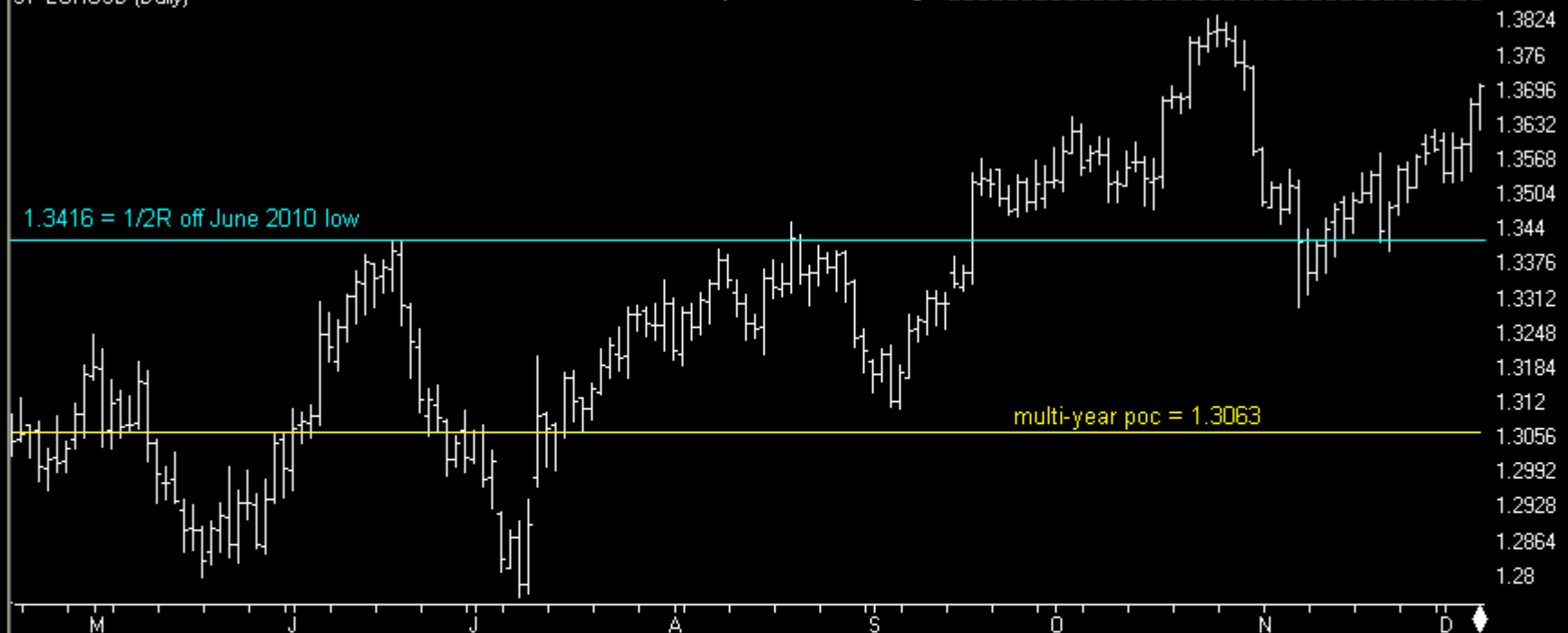
Charts by AIQ TradingExpert

51 EURUSD (Daily)

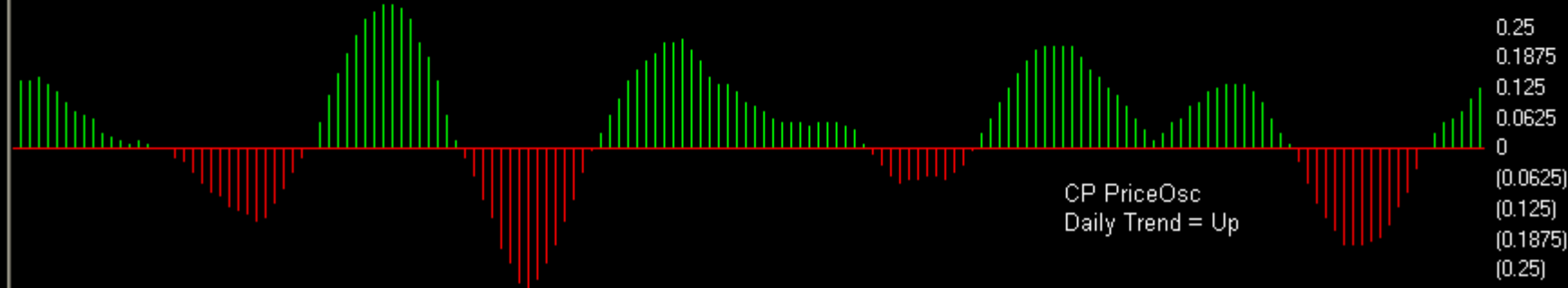
1.3965 = 1/2R off 2008 high

1.3416 = 1/2R off June 2010 low

multi-year poc = 1.3063



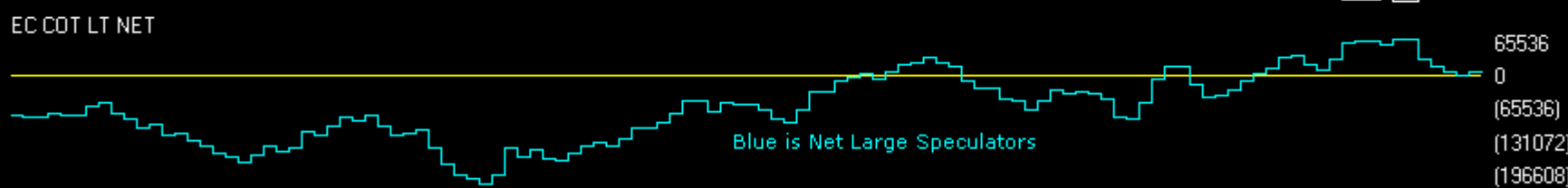
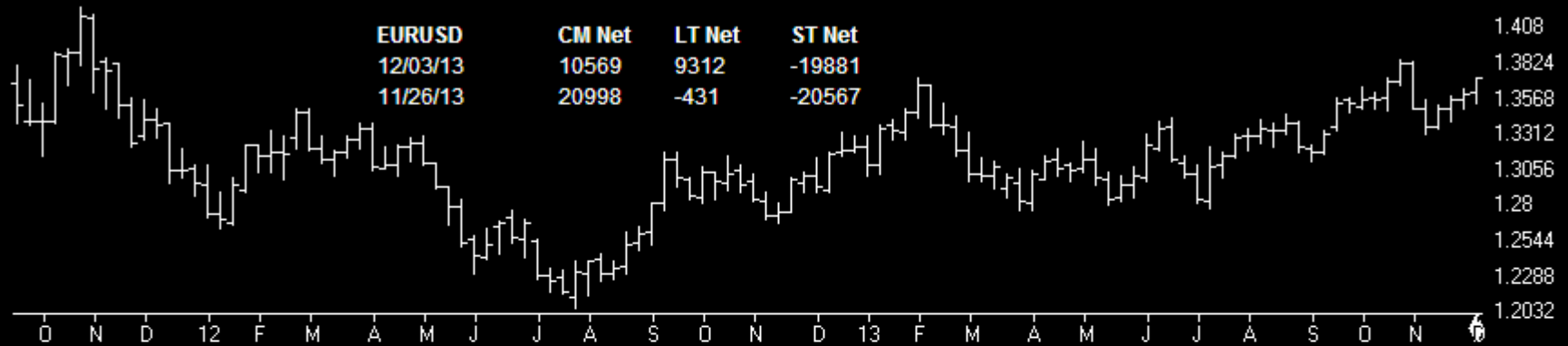
CP PriceOsc



Dollar

Charts by AIQ TradingExpert

EURUSD	CM Net	CM Long	CM Short	LT Net	LT Long	LT Short	ST Net	ST Long	ST Short
12/03/13	60.9	64.8	55.4	44.3	33.2	33.9	15.7	6.7	55.0
11/26/13	64.9	63.2	47.5	41.3	37.5	43.9	12.8	0.0	55.1

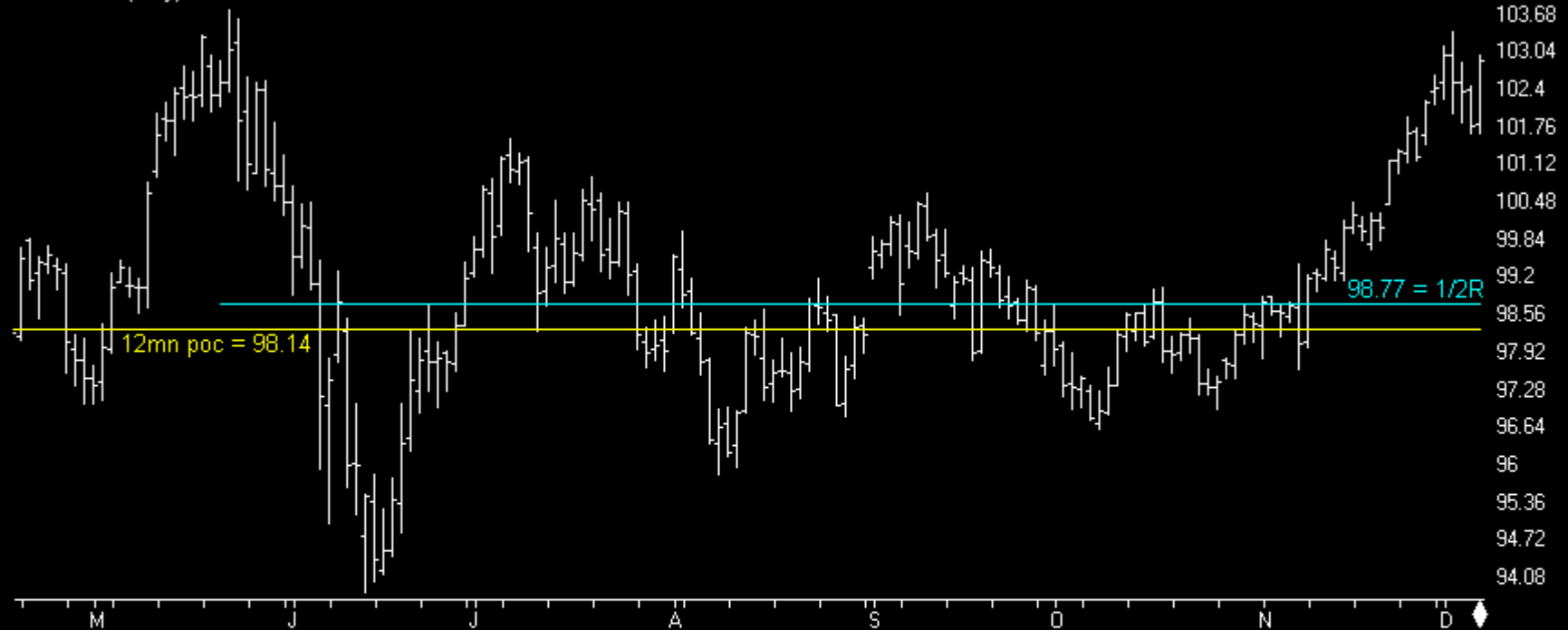


EURUSD (Weekly)
commitments of traders

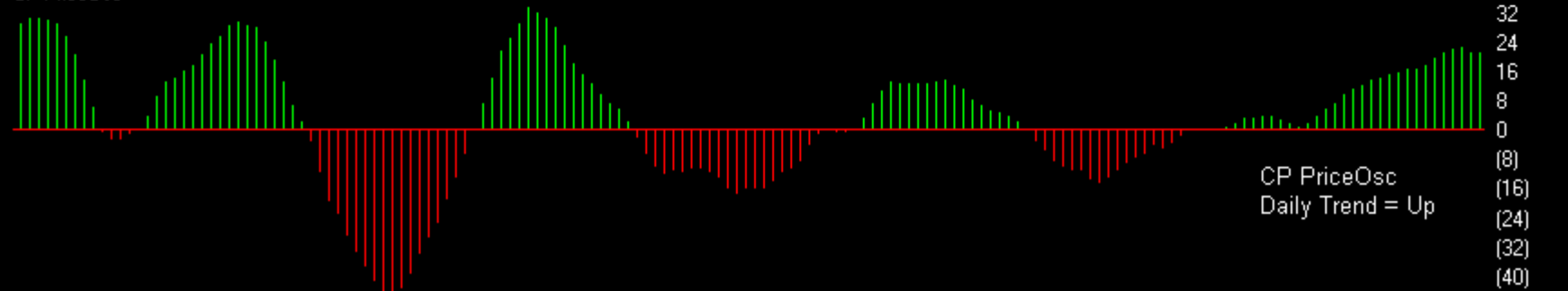
Dollar

Charts by AIQ TradingExpert

53 USDJPY (Daily)



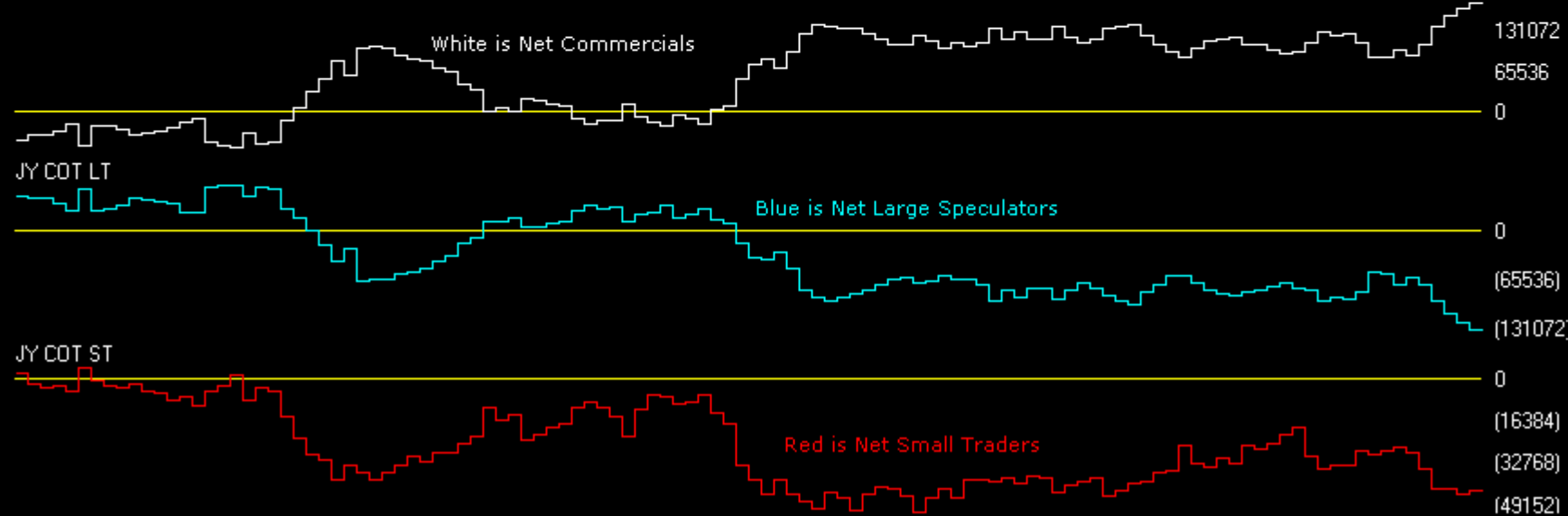
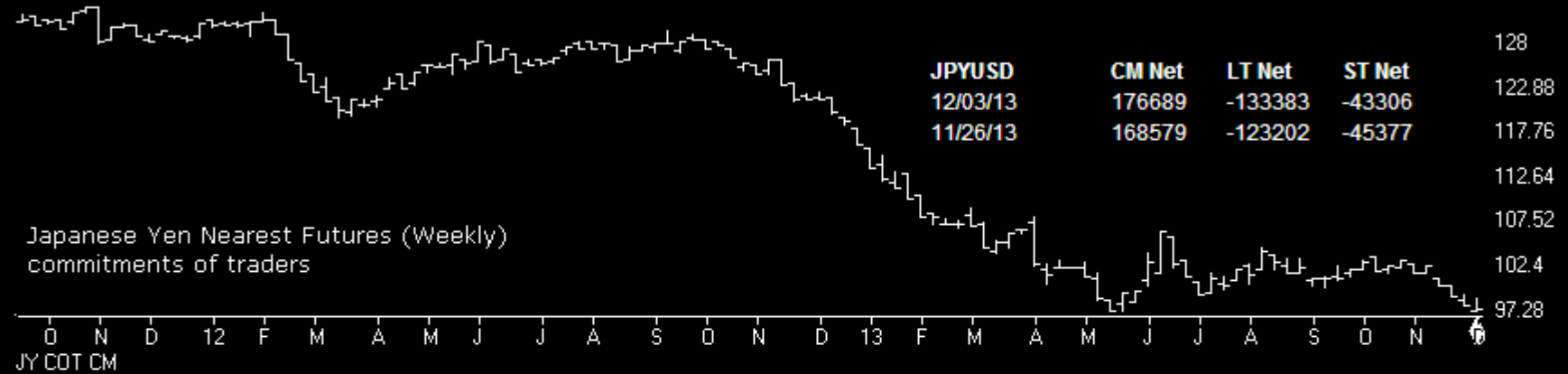
CP PriceOsc



Dollar

Charts by AIQ TradingExpert

JPYUSD	CM Net	CM Long	CM Short	LT Net	LT Long	LT Short	ST Net	ST Long	ST Short
11/26/13	100.0	86.8	15.3	0.0	16.9	89.6	0.0	8.3	35.1
11/19/13	100.0	100.0	16.7	0.0	12.2	86.8	0.0	0.0	39.1



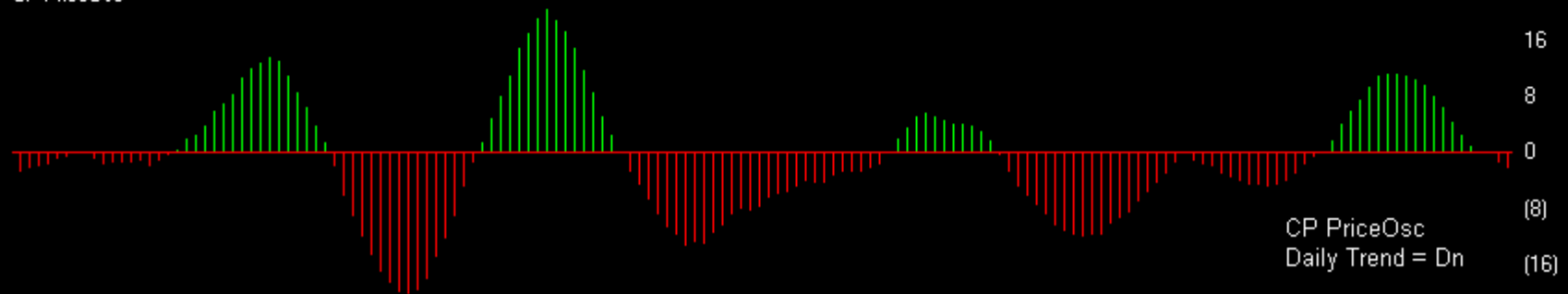
Dollar

Charts by AIQ TradingExpert

US DOLLAR INDEX (Daily)



CP PriceOsc

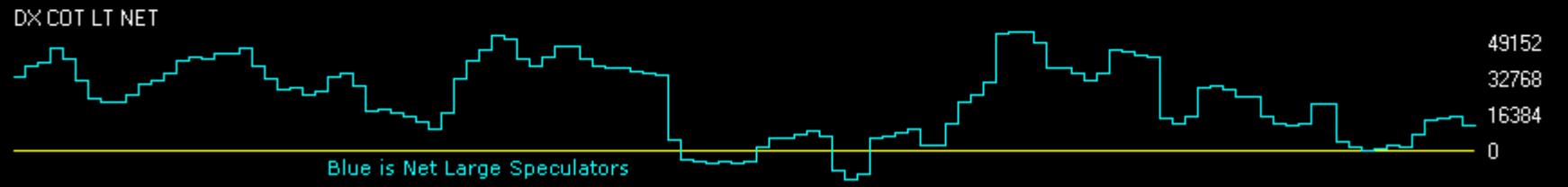
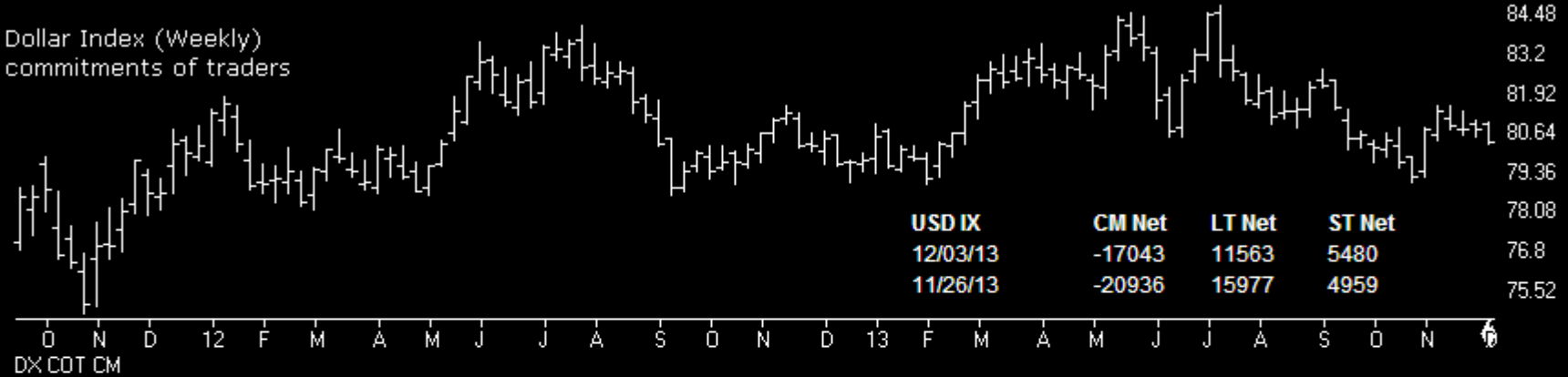


Dollar

Charts by AIQ TradingExpert

USD IX	CM Net	CM Long	CM Short	LT Net	LT Long	LT Short	ST Net	ST Long	ST Short
12/03/13	71.7	31.9	50.0	27.0	47.6	51.6	43.0	87.9	31.8
11/26/13	66.8	7.1	64.6	36.6	77.3	36.9	18.8	82.4	38.3

Dollar Index (Weekly)
commitments of traders



<http://www.chartprofitwebcast.com>