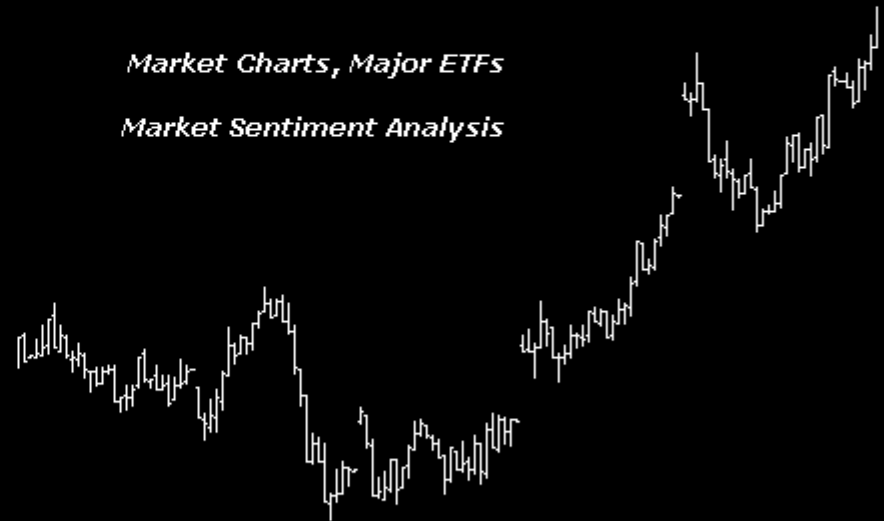


Charts to Friday 24th January 2014

Chart Profit eBook

Market Charts, Major ETFs

Market Sentiment Analysis



www.aiqsystems.com

www.chartprofitwebcast.com

terms of service

Stock Market Summary

***** PRICE PERFORMANCE / LOCATION

Weekly structure: SPY closed on Friday below the Mon-Fri Hi-Lo range which indicates Sellers Active bias on this timeframe.

Currently it is difficult to find positives. Buyers are absent in the ES analysis, Weekly Structure and daily Momentum indicators are down and Breadth numbers have deteriorated.

ES Analysis: Friday's session generated another Value Area below the 1835.50 poc. Aggressive Selling (red-at-bottom) was marked - these are usually tested within a day (or two). In the last seven days I have marked Significant Selling twice and no Significant Buying. At current levels, a positive could only develop for me if ES prints time around 1803 which would possibly migrate the 4mn poc lower and give us a refence level to work with but currently I'm very cautious.

***** BREADTH

Breadth: The CP Market Timing system turned negative (from neutral) for Nyse, turned neutral (from positive) for Nasdaq and remained neutral for R2000. UK turned negative (from positive).

Stocks>50dyma numbers: Nyse 42%, Nasdaq 58%, R2000 51%, UK 59%
Numbers >50 are considered supportive. Numbers >50 are considered supportive.

***** SENTIMENT The majority of Sentiment indicators have registered extreme optimism recently. This usually a warning for the market.

Consensus Polls:

01/24: AAll (public poll). Bulls% was slightly lower at 38.1%. Four weeks ago Bulls% reached 55.1% which was the highest Bulls% since January. Bears% was higher at 23.8%. The 4wk ma of net (Bulls-Bears) is at 16.05. It reached 25.05 ten weeks ago which was the highest since early 2012.

01/24: Investors Intelligence. Bulls% was slightly higher at 57.6%. Three week's ago Bulls% reached 61.6% which was the highest since October 2007. Bears% was almost unchanged at 15.1%. Four week's ago Bears% hit 14.1% which was the lowest Bears% in my database. The 4wkma of nett at 43.77 is now slightly lower than 45.3 which it reached two weeks ago - the highest in my database

01/24: Market Vane (advisers) poll was lower at 65. Three weeks ago the number reached 67 which was the highest reading since late May.

01/24: The NAAIM number (a measurement of average current equity exposure among active money managers) was lower at 95.13. There are only six readings in the database higher than this, the highest being 104.25 last February.

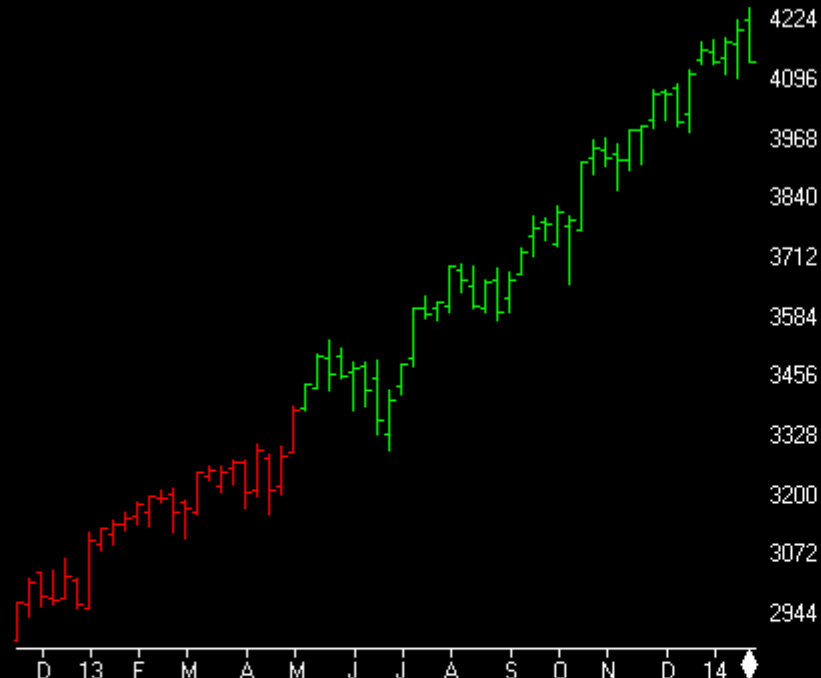
Mutual Fund Flow:

01/24: My version of the Rydex Assets Ratio ended the week at 6.84. On 16th Jan it reached 7.5 which is the highest ratio in my database, registering extreme optimism and a warning for the market.

01/24: lipperusfundflows reported Equity Fund inflows of \$3.8 Billion in the week to 22nd January.

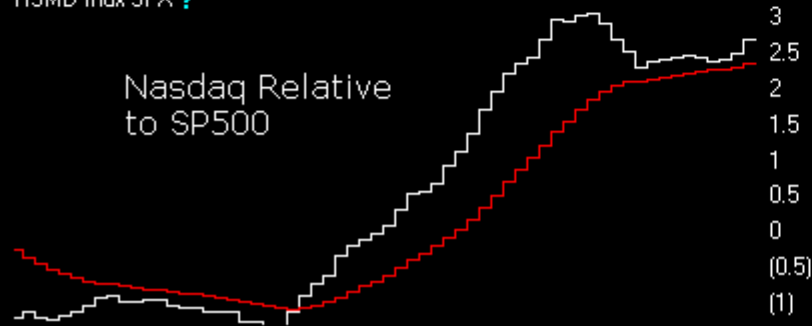
01/24: VIX closed sharply higher at 18.14 on Friday, a three month high.

NASDAQ COMPOSITE (Weekly)



RSMD Indx SPX ?

Nasdaq Relative to SP500



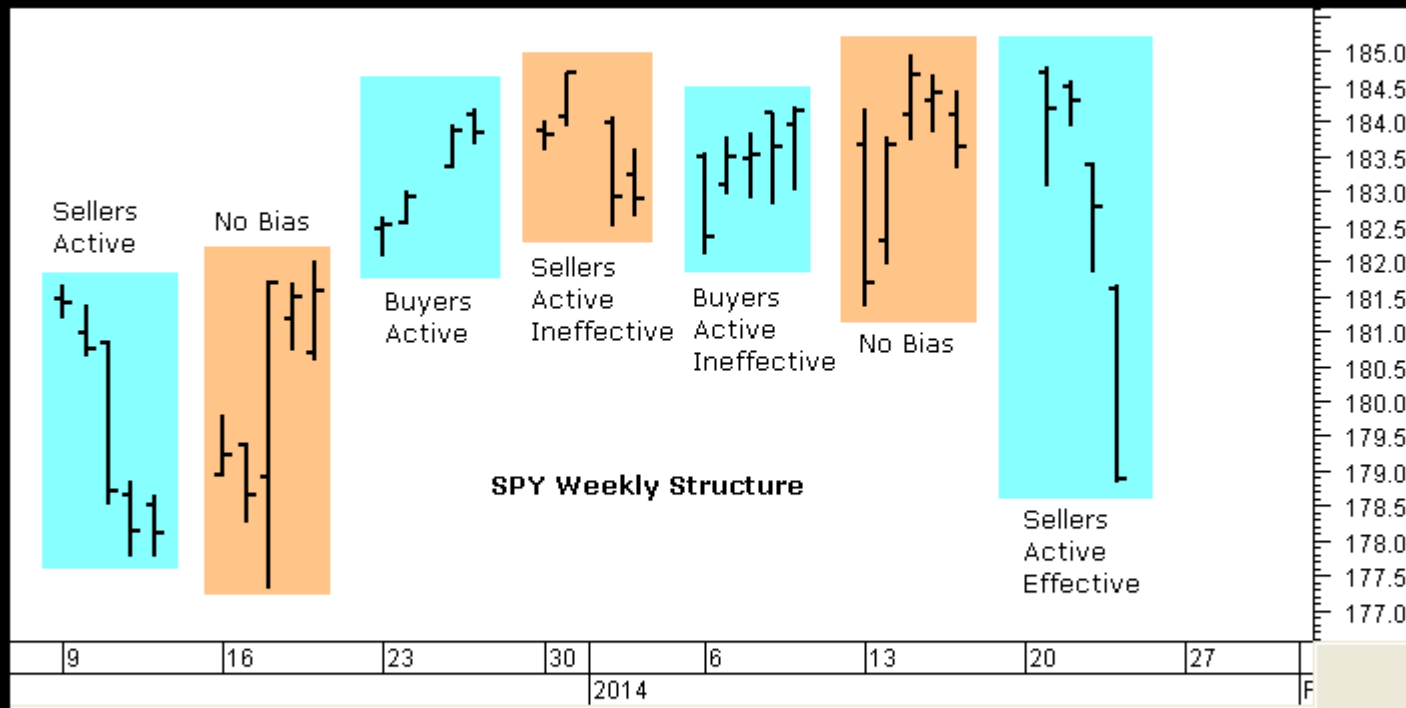
ChartProfit Breadth System - wk ending 01/24

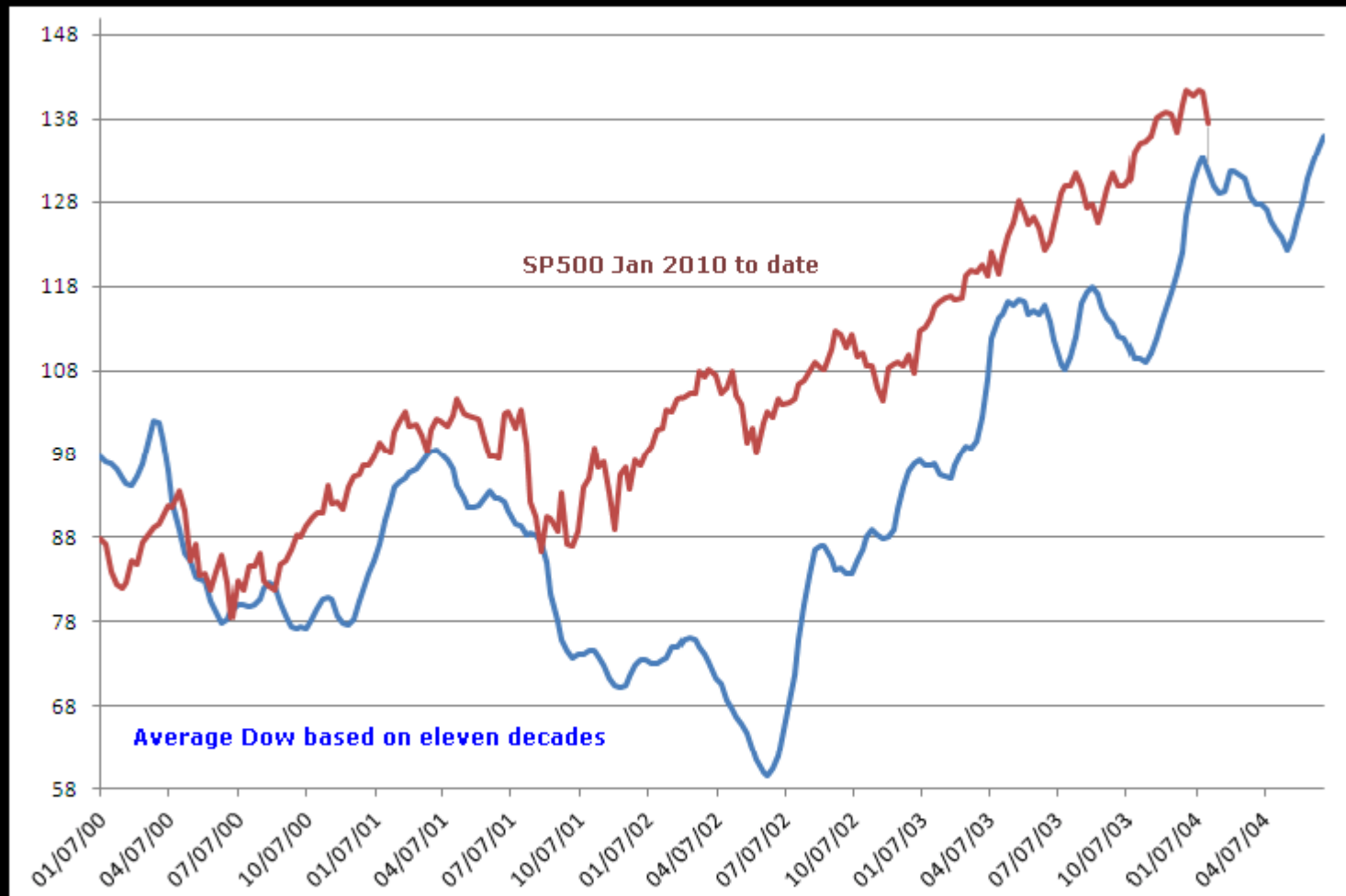
	-5	-4	-3	-2	-1	↓
NYSE	61	67	64	64	63	42
NasDaq	66	72	72	72	72	58
SP500	70	75	73	72	65	36
ND100	67	78	78	72	74	50
R2000	68	73	70	66	66	51
UK	58	71	74	76	77	53

number = % stocks >50day ma

Relative to SPX

	-5	-4	-3	-2	-1	↓
NasDaq Comp	█	█	█	█	█	█
NasDaq 100	█	█	█	█	█	█
SOX	█	█	█	█	█	█
Russell 2000	█	█	█	█	█	█





Commitments of Traders

Charts by AIQ TradingExpert

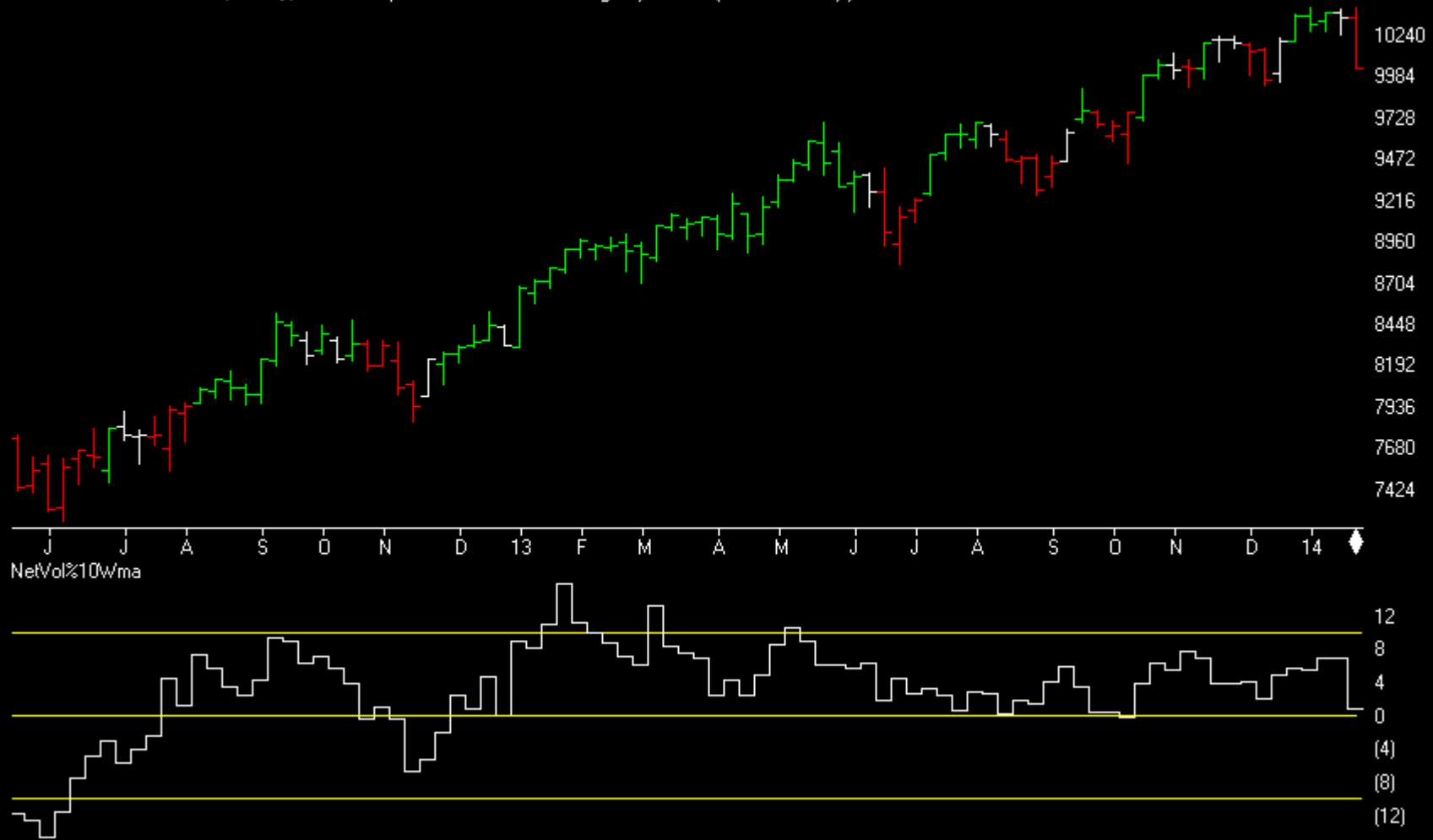
C.O.T.
Quick
View

	SP500	CM Net	CM Long	CM Short	LT Net	LT Long	LT Short	ST Net	ST Long	ST Short
	01/21/14	18.1	56.0	93.2	33.3	37.2	46.6	76.9	44.2	4.5
	01/14/14	10.4	16.6	83.8	10.9	34.2	96.3	88.9	78.3	6.3
	GOLD	CM Net	CM Long	CM Short	LT Net	LT Long	LT Short	ST Net	ST Long	ST Short
	01/21/14	71.8	77.8	31.3	30.8	29.4	58	12.5	15.2	70.9
	01/14/14	72.8	63.9	26.2	27.5	22.2	59.8	22.7	16.9	57.6
	CRUDE OIL	CM Net	CM Long	CM Short	LT Net	LT Long	LT Short	ST Net	ST Long	ST Short
	01/21/14	52.7	6.9	31.8	64.1	100.0	89.7	0.0	37.1	100.0
	01/14/14	56.2	3.3	19.6	44.2	98.0	93.3	41.4	86.0	96.6
	T-BONDS	CM Net	CM Long	CM Short	LT Net	LT Long	LT Short	ST Net	ST Long	ST Short
	01/21/14	1.3	0.0	83.3	97.4	100.0	71.3	74.8	60.2	1.0
	01/14/14	0.0	0.0	93.3	100.0	100.0	43.8	73.6	62.4	4.1
	GBPUSD	CM Net	CM Long	CM Short	LT Net	LT Long	LT Short	ST Net	ST Long	ST Short
	01/21/14	20.2	36.0	84.9	80.5	70.7	14.5	78.4	48.9	16.7
	01/14/14	15.6	35.0	91.5	84.0	71.0	9.2	85.3	50.8	7.1
	JPYUSD	CM Net	CM Long	CM Short	LT Net	LT Long	LT Short	ST Net	ST Long	ST Short
	01/21/14	62.0	85.2	81.5	33.3	9.2	51.0	48.4	26.5	6.8
	01/14/14	66.6	90.5	73.2	29.7	0.0	51.8	42.9	26.0	15.3
	EURUSD	CM Net	CM Long	CM Short	LT Net	LT Long	LT Short	ST Net	ST Long	ST Short
	01/21/14	100.0	100.0	20.7	5.8	3.5	61.9	0.0	0.0	100.0
	01/14/14	71.4	71.7	38.0	37.0	31.4	50.6	12.3	38.2	85.0
	USD IX	CM Net	CM Long	CM Short	LT Net	LT Long	LT Short	ST Net	ST Long	ST Short
	01/21/14	59.5	55.6	52.4	32.5	30.6	51.7	91.1	92.2	3.5
	01/14/14	67.8	64.6	47.9	28.4	21.9	50.5	42.4	82.8	53.4

Market Charts

Charts by AIQ TradingExpert

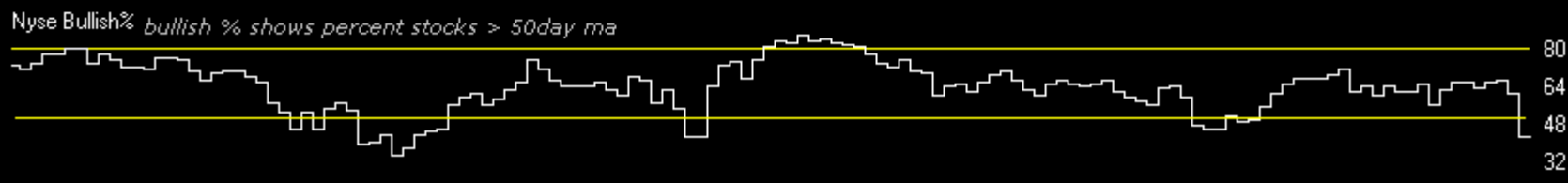
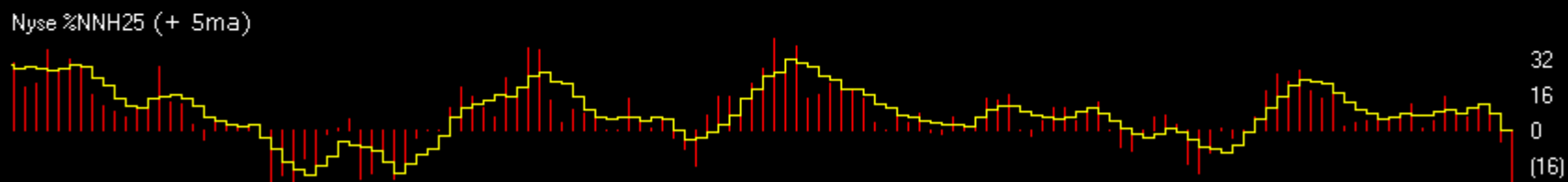
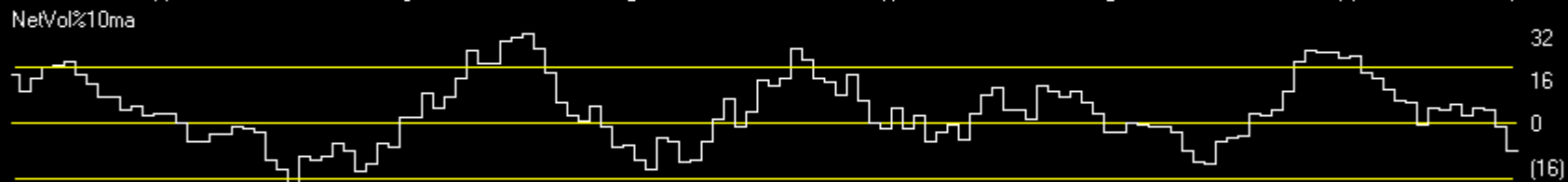
MARKET CHART NYSE (Weekly) + Chartprofit Market Timing System (color study)



Market Charts

Charts by AIQ TradingExpert

MARKET CHART NYSE (Daily)



Market Charts

Charts by AIQ TradingExpert

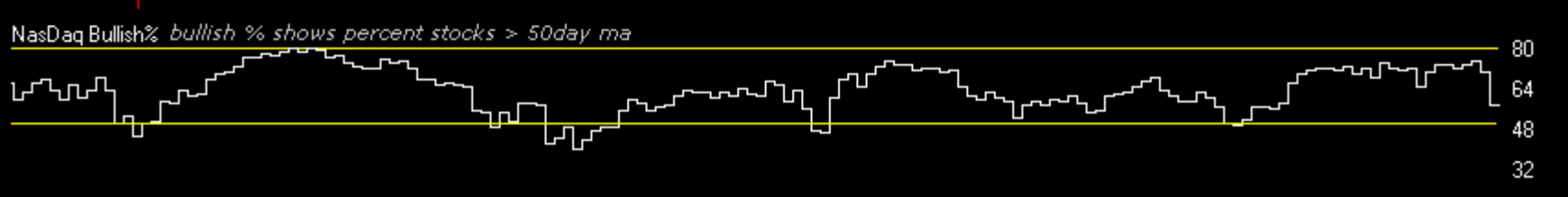
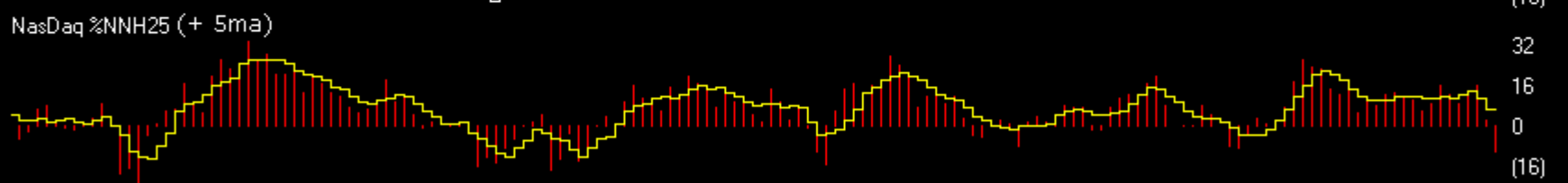
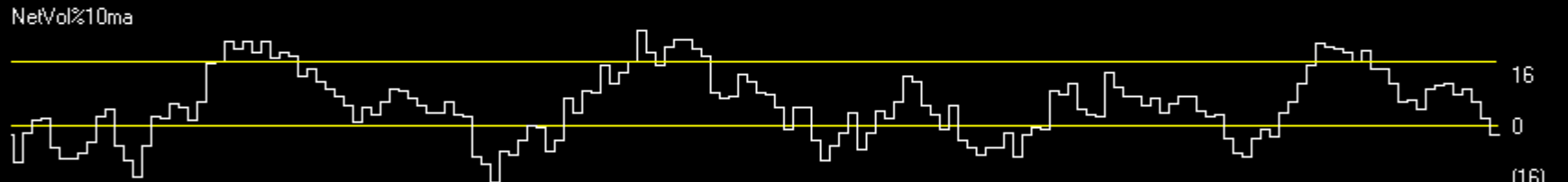
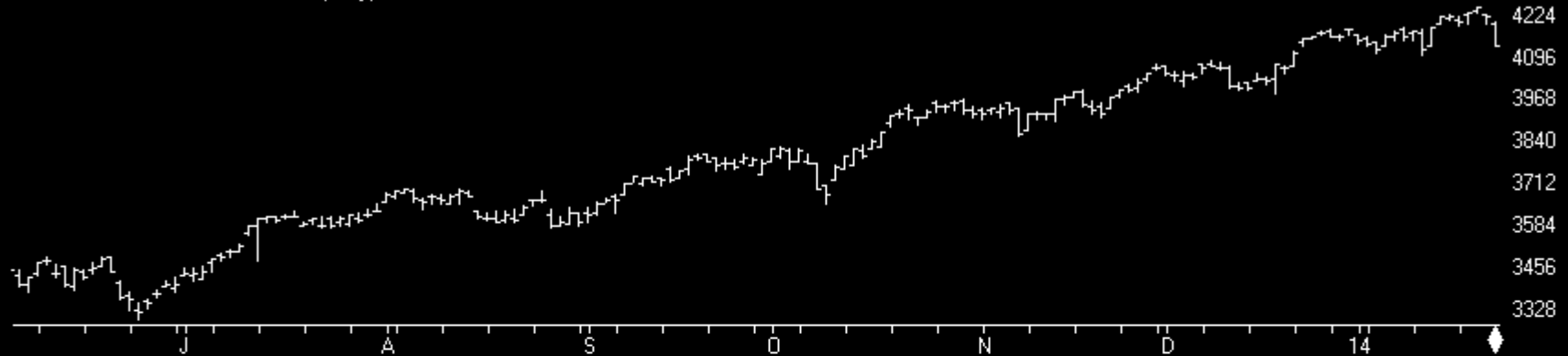
MARKET CHART NASDAQ 1800 (Weekly) + Chartprofit Market Timing System (color study)



Market Charts

Charts by AIQ TradingExpert

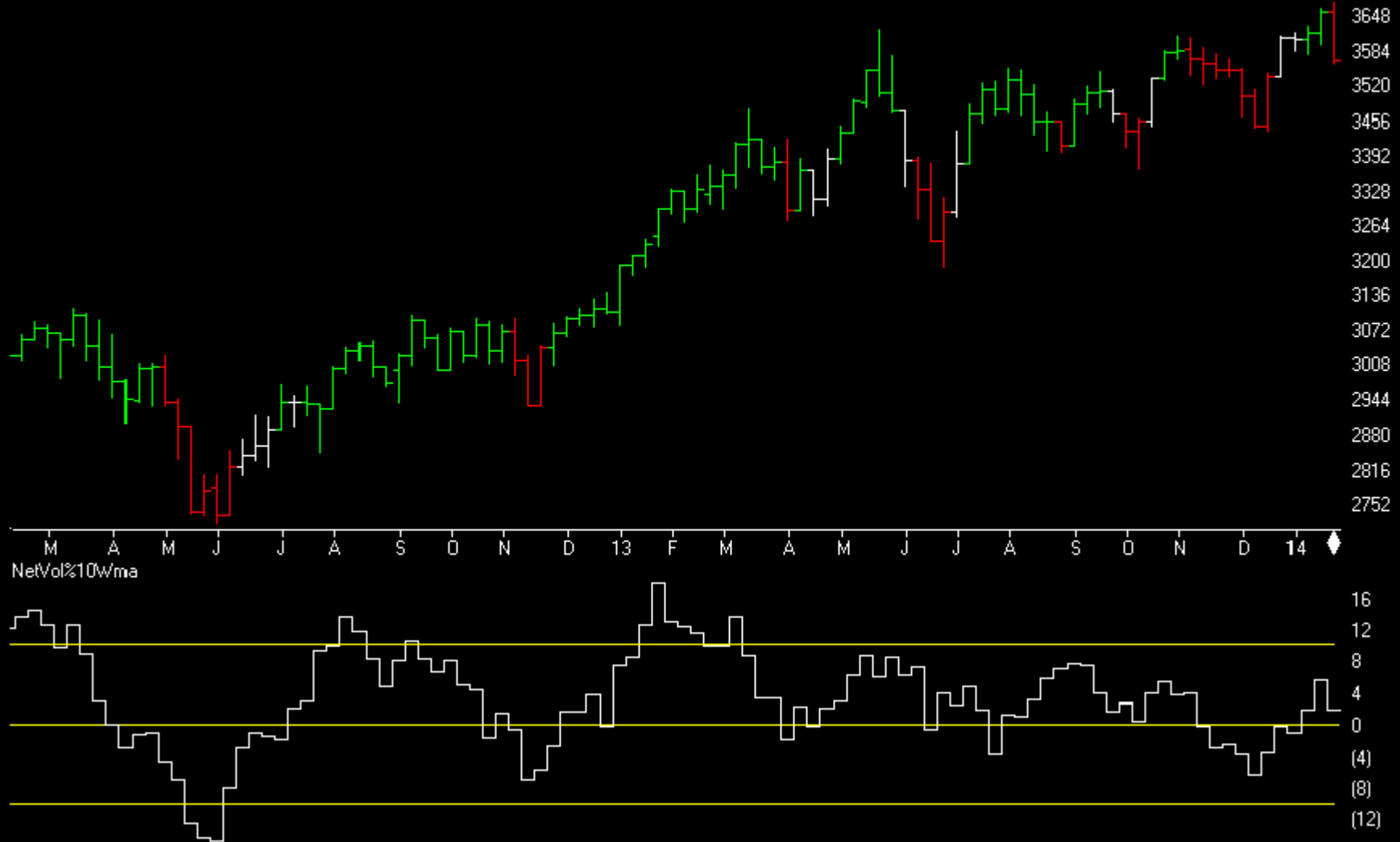
MARKET CHART NASDAQ 1800 (Daily)



Market Charts

Charts by AIQ TradingExpert

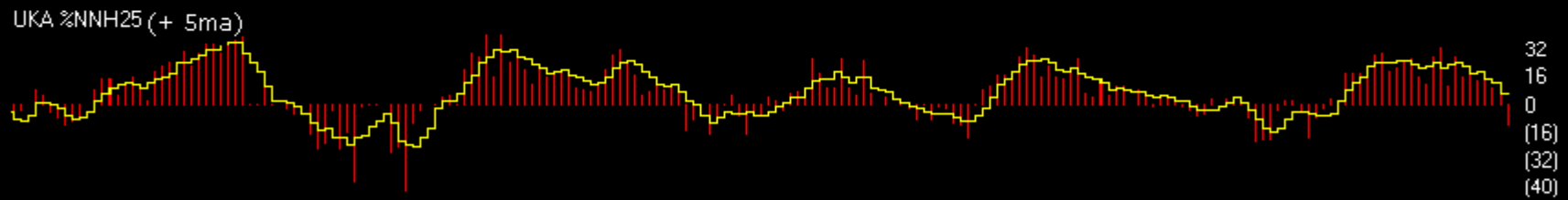
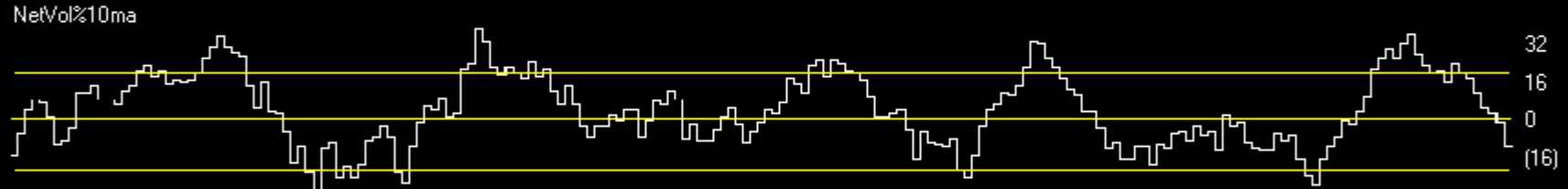
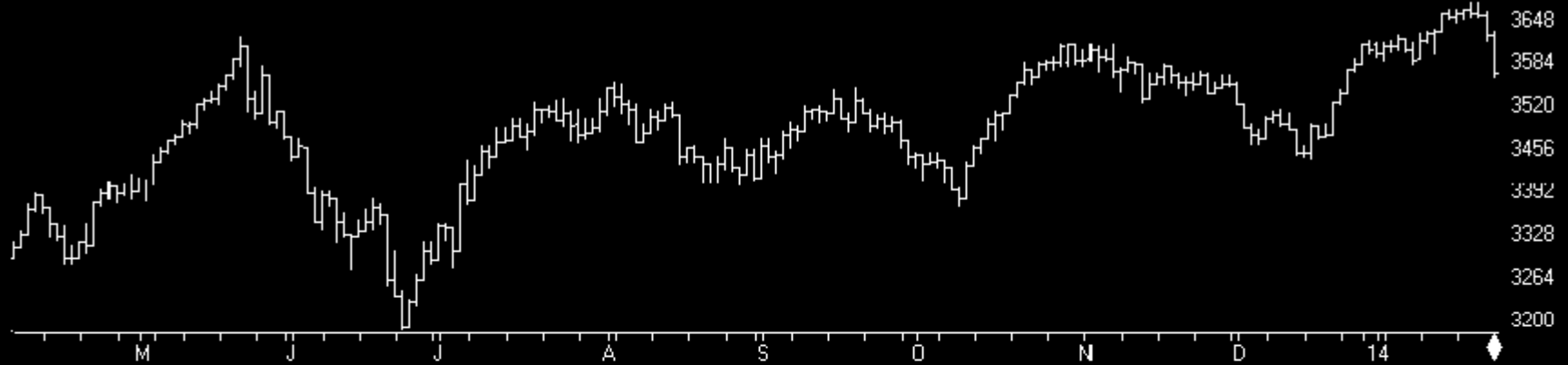
UK ALLSHARE MKT 2013 (Weekly) + Chartprofit Market Timing System (color study)



Market Charts

Charts by AIQ TradingExpert

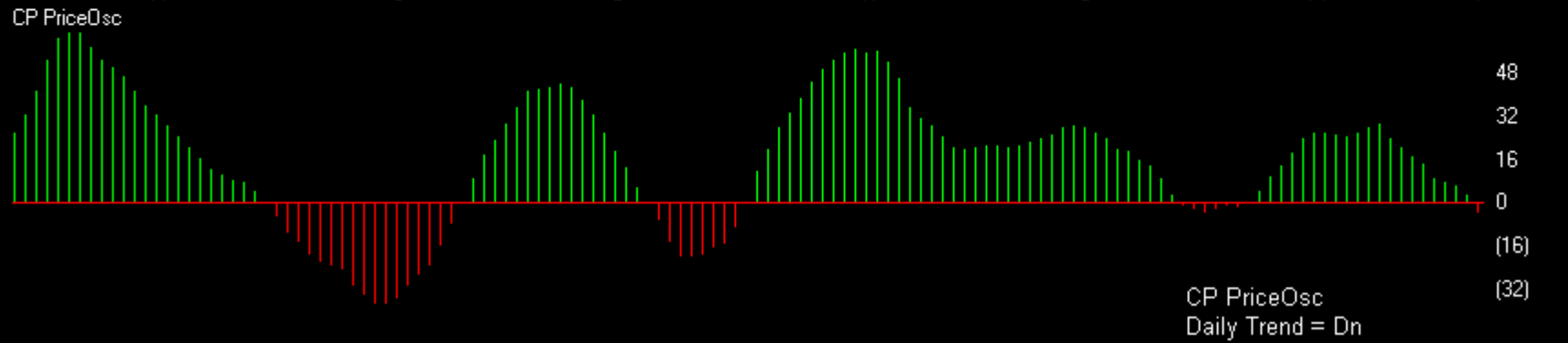
UK ALLSHARE MKT 2013 (Daily)



Index ETFs

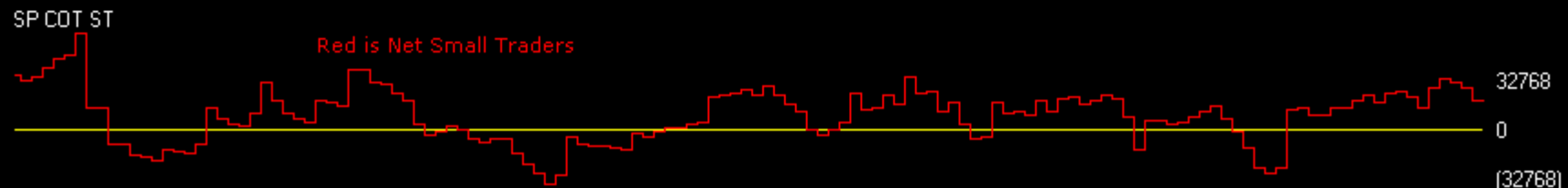
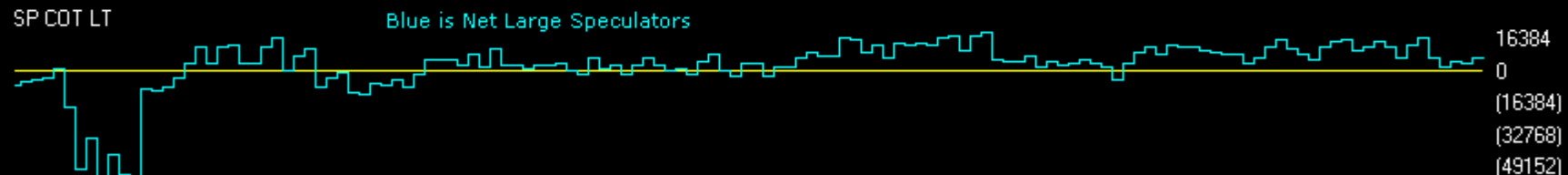
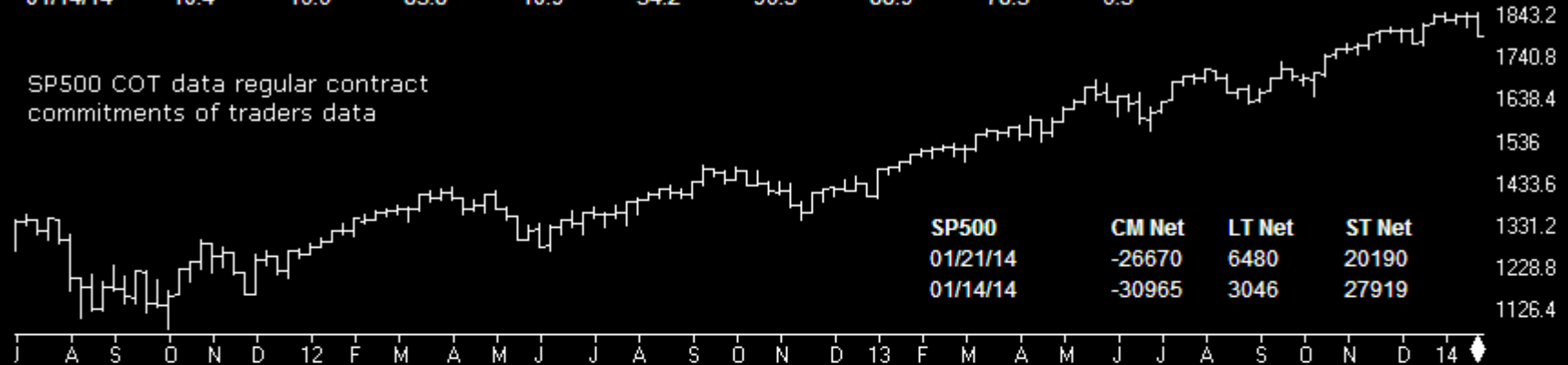
Charts by AIQ TradingExpert

13 SPY SP500 ETF (Daily)



SP500	CM Net	CM Long	CM Short	LT Net	LT Long	LT Short	ST Net	ST Long	ST Short
01/21/14	18.1	56.0	93.2	33.3	37.2	46.6	76.9	44.2	4.5
01/14/14	10.4	16.6	83.8	10.9	34.2	96.3	88.9	78.3	6.3

SP500 COT data regular contract commitments of traders data



Index ETFs

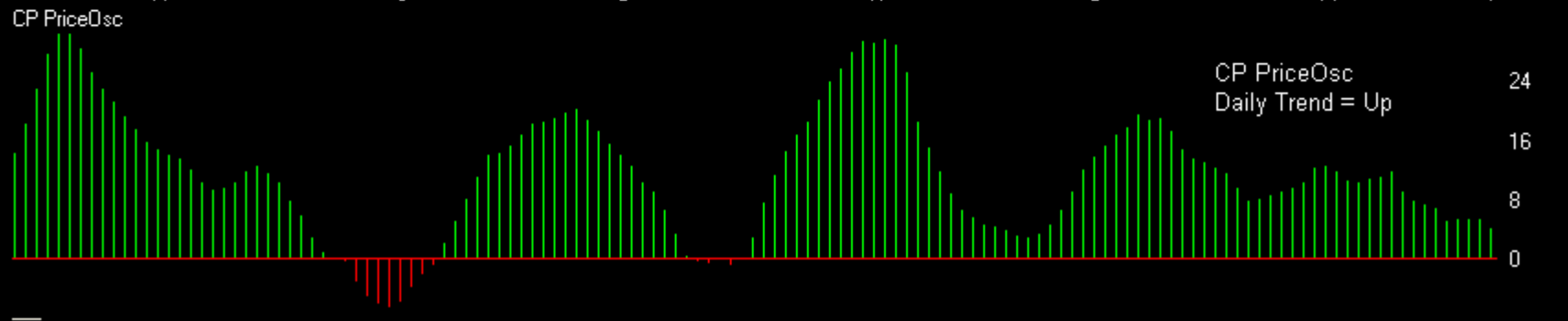
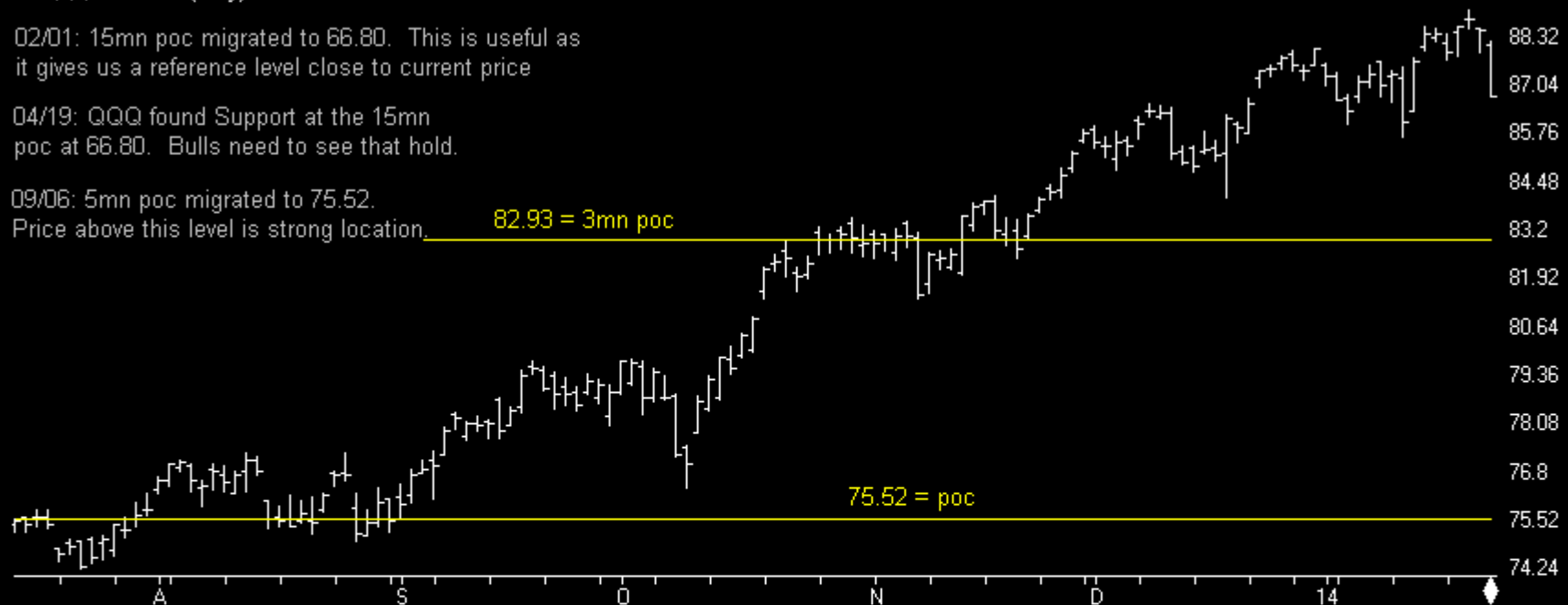
Charts by AIQ TradingExpert

12 QQQ N100 ETF (Daily)

02/01: 15mn poc migrated to 66.80. This is useful as it gives us a reference level close to current price

04/19: QQQ found Support at the 15mn poc at 66.80. Bulls need to see that hold.

09/06: 5mn poc migrated to 75.52.
Price above this level is strong location.



Index ETFs

Charts by AIQ TradingExpert

11 IWM R2000 ETF (Daily)

05/03: 6mn poc migrated higher to 93.62. IWM needs to hold above this level to stay in a strong price location.

07/12: Chart broke to new highs last week. As long as price holds above the 10mn poc at 97.87 it is in a strong price location in the LT.

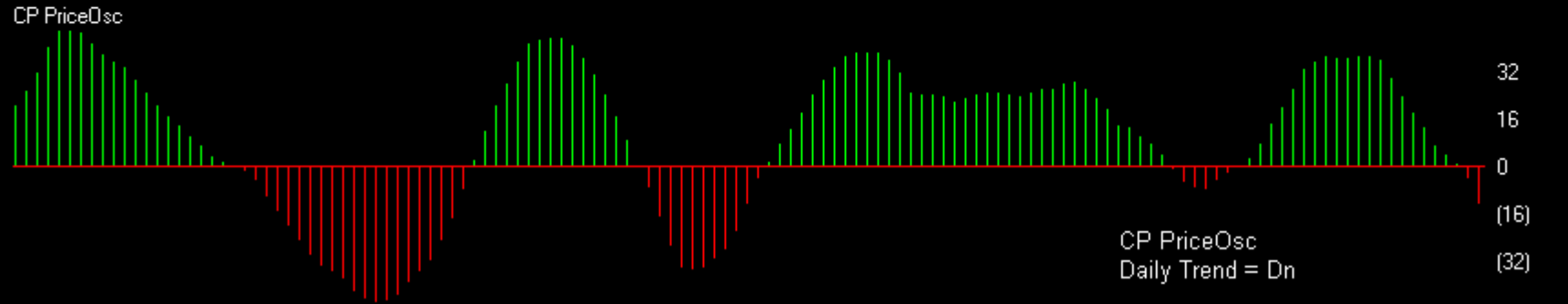
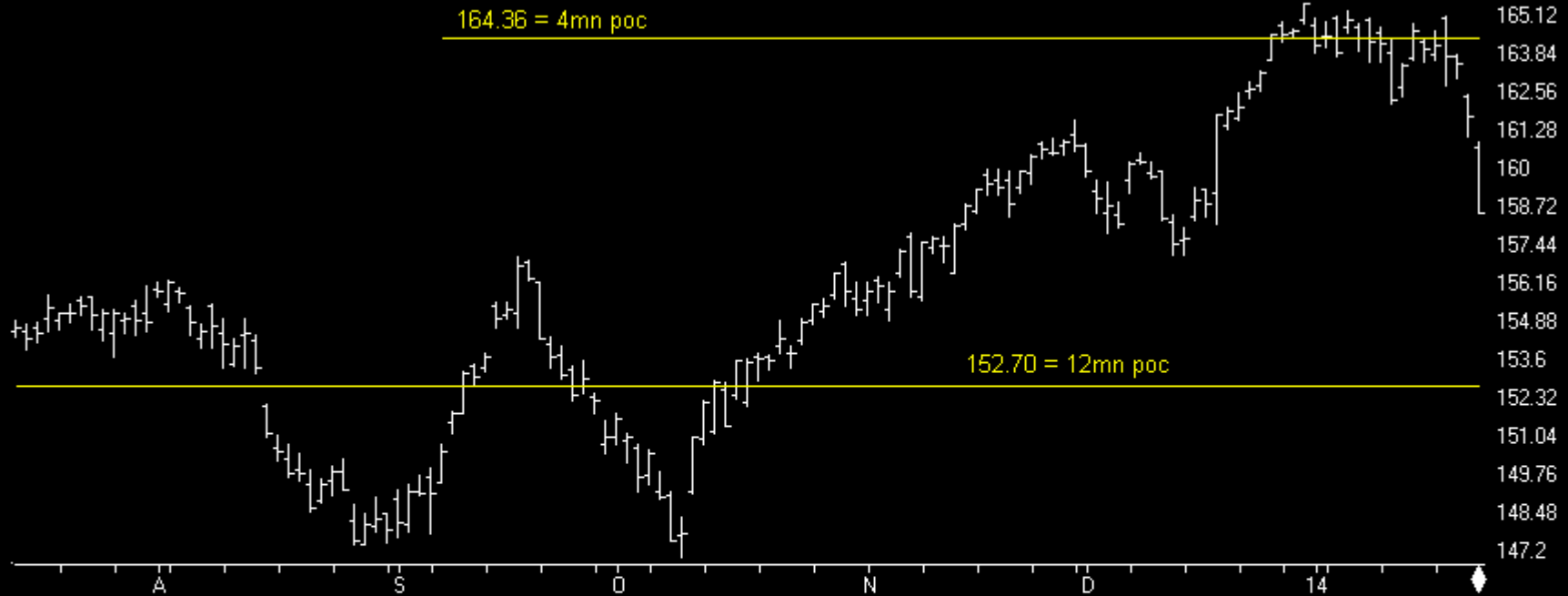
09/13: The three month poc migrated higher to 104.44.



Index ETFs

Charts by AIQ TradingExpert

10 DIA DOW ETF (Daily)

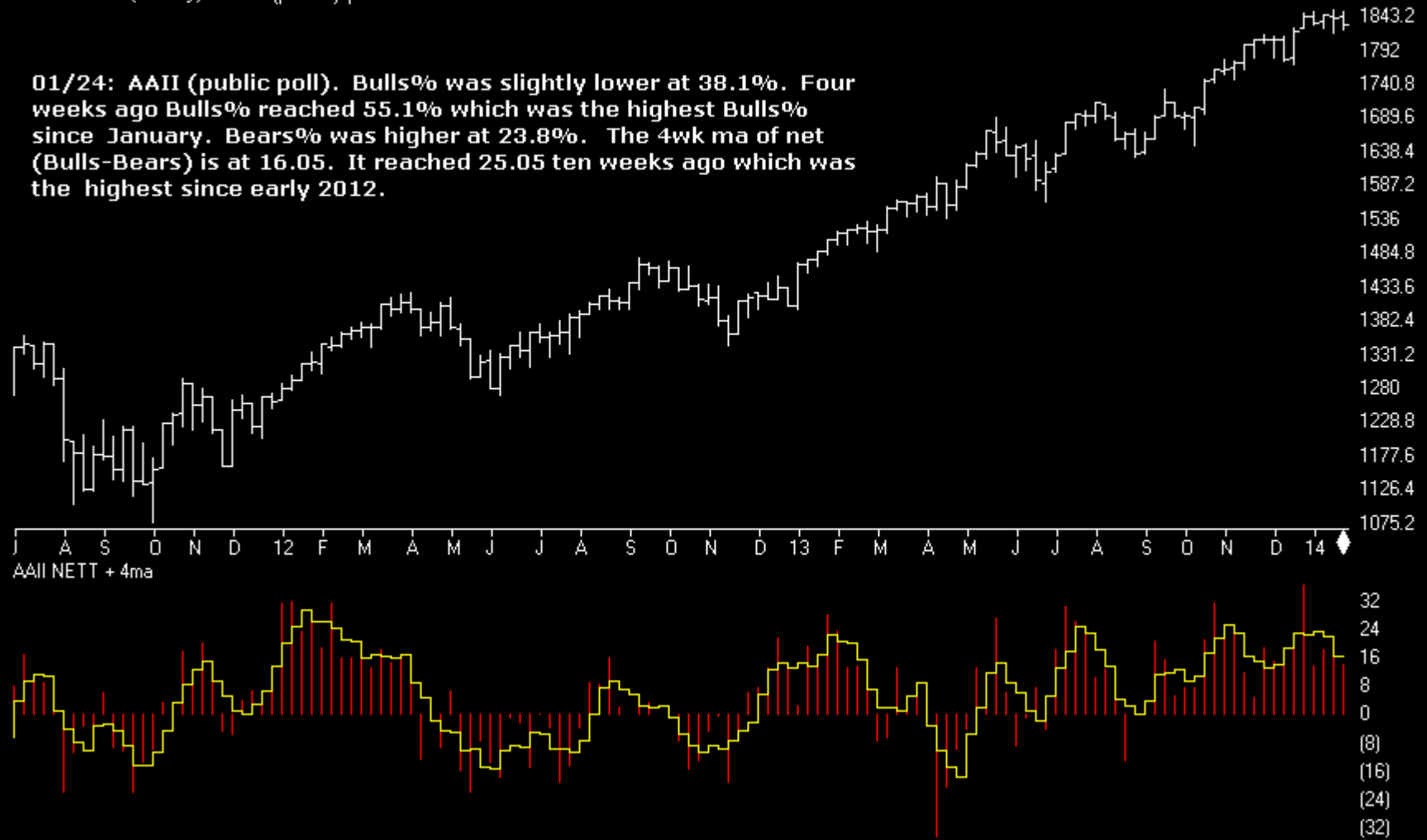


Sentiment

Charts by AIQ TradingExpert

SP500 Index (Weekly) + AAI (public) poll

01/24: AAI (public poll). Bulls% was slightly lower at 38.1%. Four weeks ago Bulls% reached 55.1% which was the highest Bulls% since January. Bears% was higher at 23.8%. The 4wk ma of net (Bulls-Bears) is at 16.05. It reached 25.05 ten weeks ago which was the highest since early 2012.

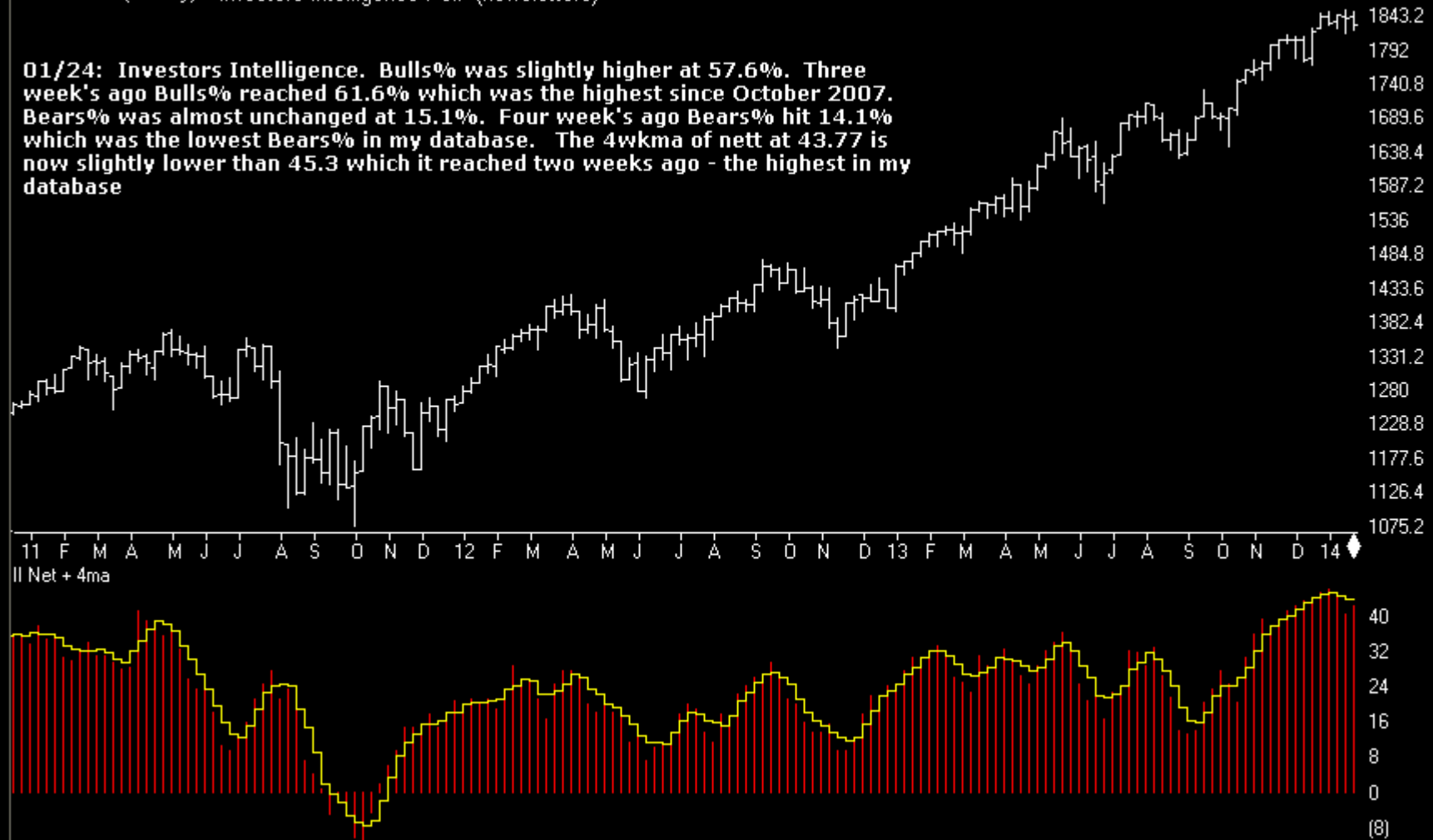


Sentiment

Charts by AIQ TradingExpert

SP500 Index (Weekly) + Investors Intelligence Poll (newsletters)

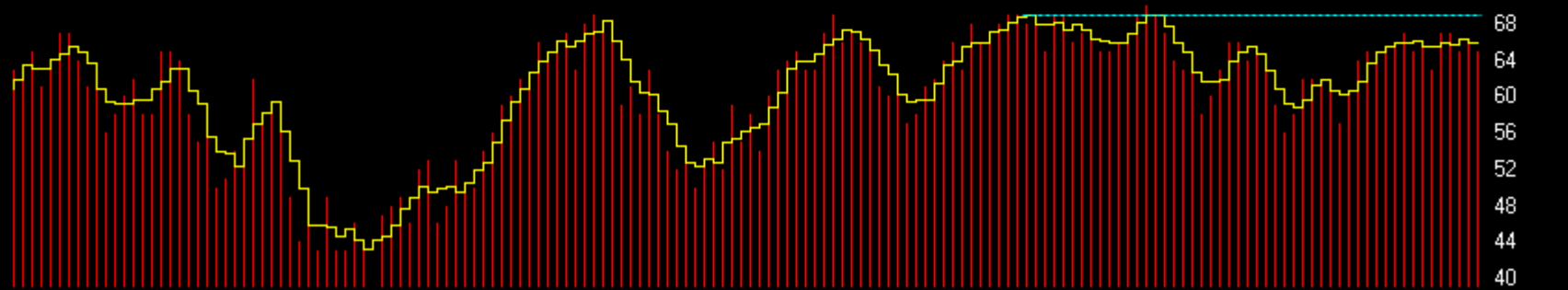
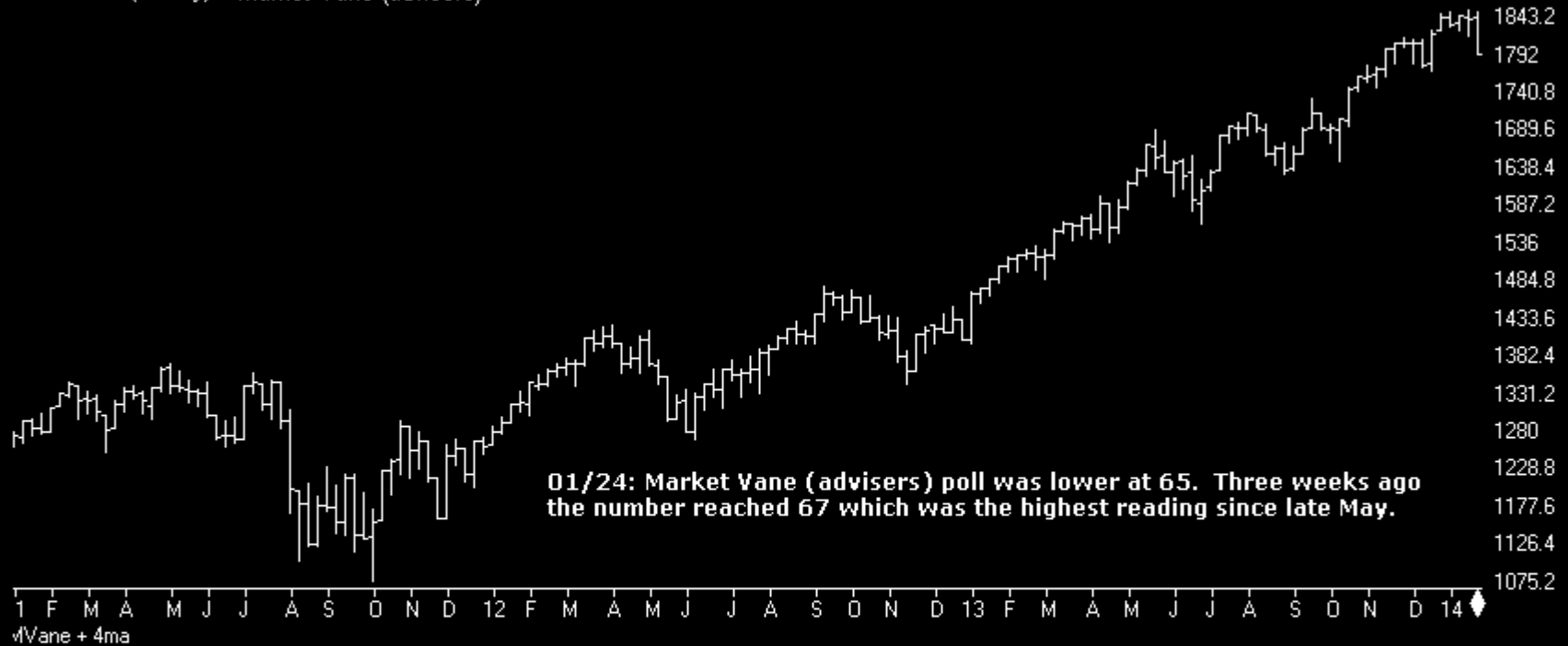
01/24: Investors Intelligence. Bulls% was slightly higher at 57.6%. Three week's ago Bulls% reached 61.6% which was the highest since October 2007. Bears% was almost unchanged at 15.1%. Four week's ago Bears% hit 14.1% which was the lowest Bears% in my database. The 4wkma of nett at 43.77 is now slightly lower than 45.3 which it reached two weeks ago - the highest in my database



Sentiment

Charts by AIQ TradingExpert

SP500 Index (Weekly) + Market Vane (advisers)

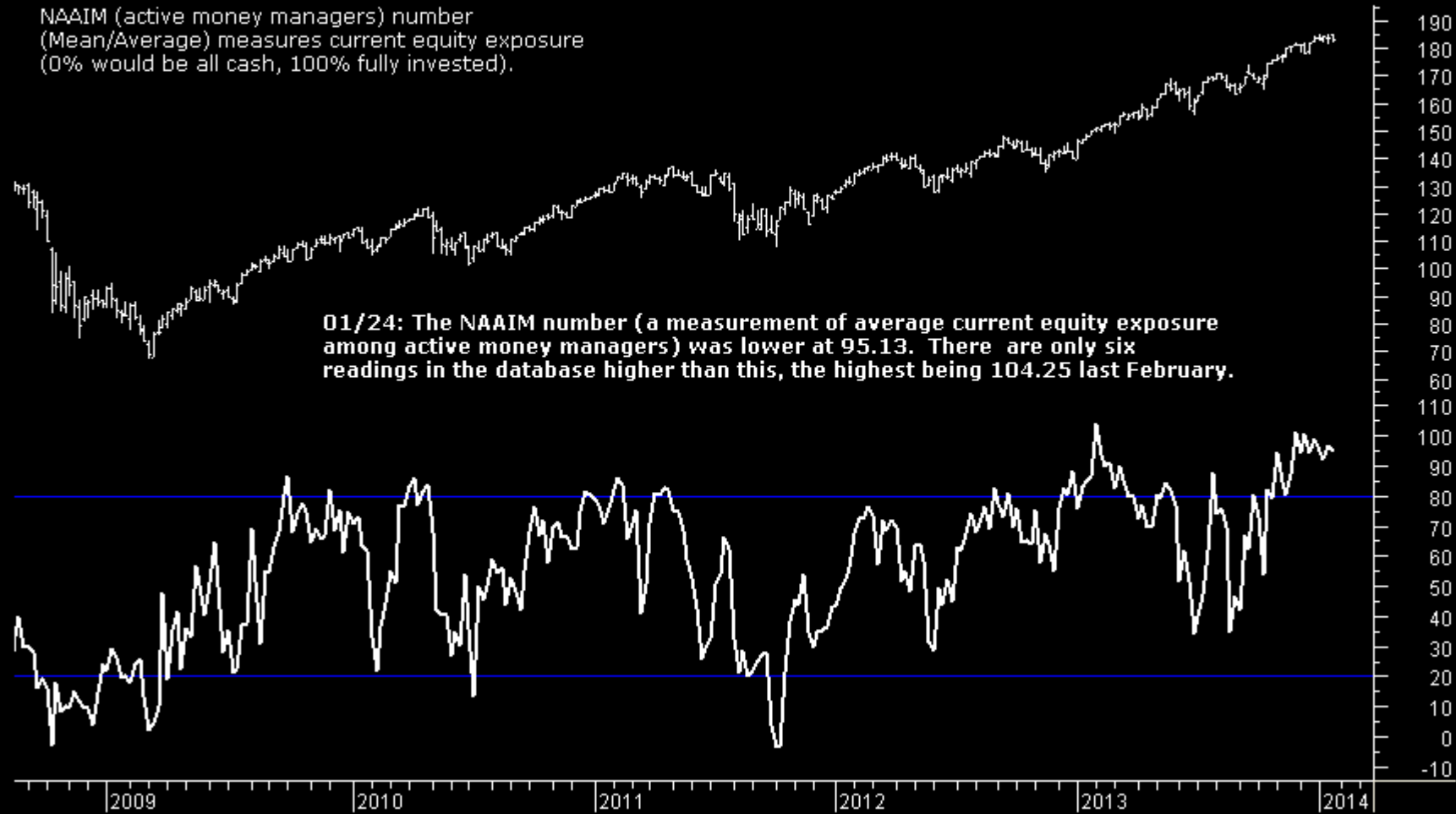


Sentiment

Charts by AIQ TradingExpert

SPY + NAAIM Number
National Association of Active Investment Managers

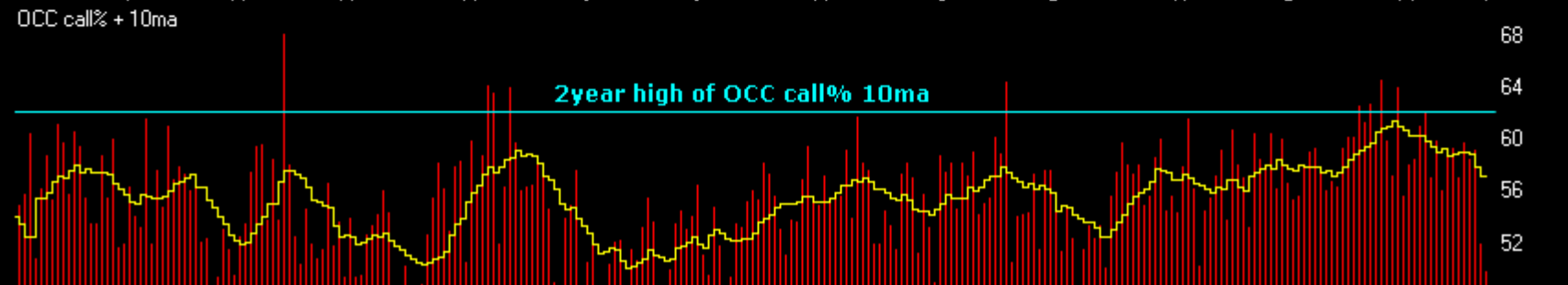
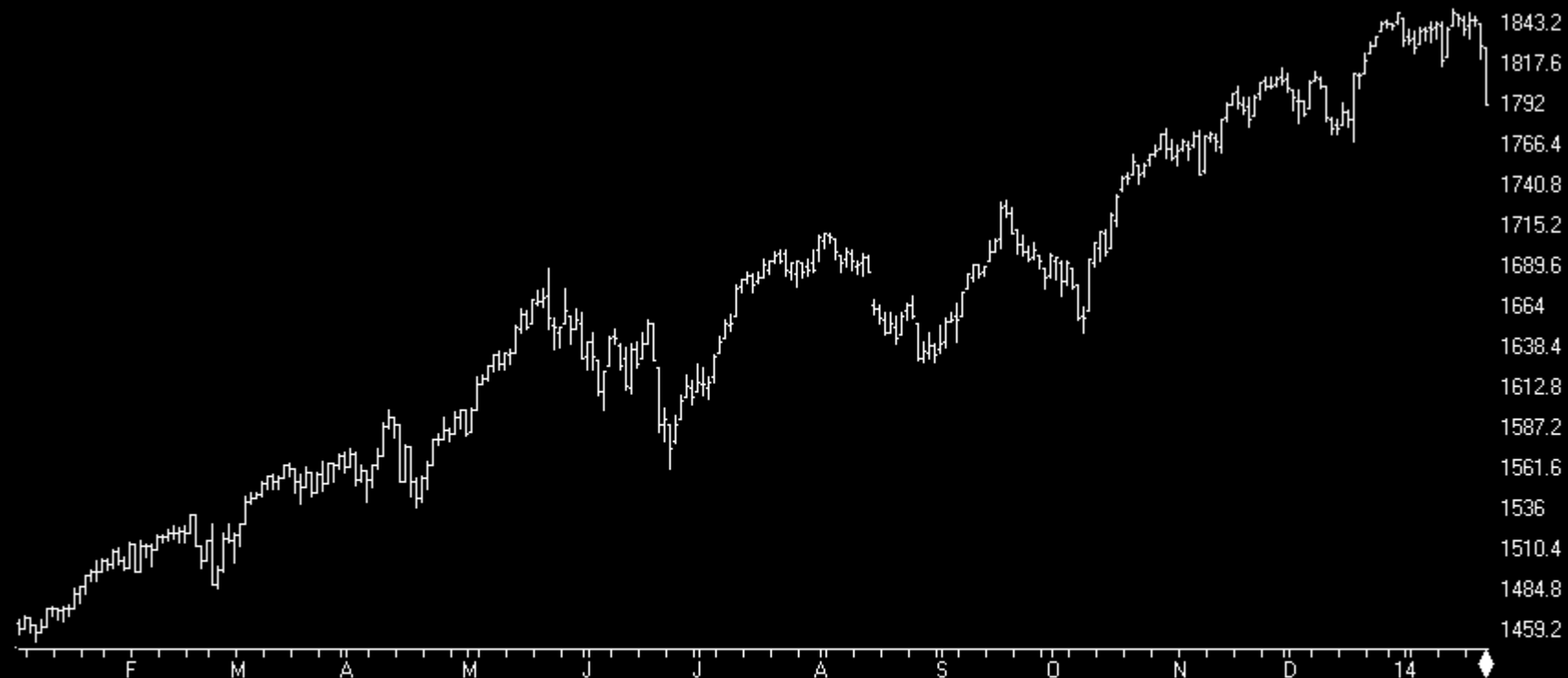
NAAIM (active money managers) number
(Mean/Average) measures current equity exposure
(0% would be all cash, 100% fully invested).



Sentiment

Charts by AIQ TradingExpert

SP500 Index (Daily) + OCC Calls% (equities only)

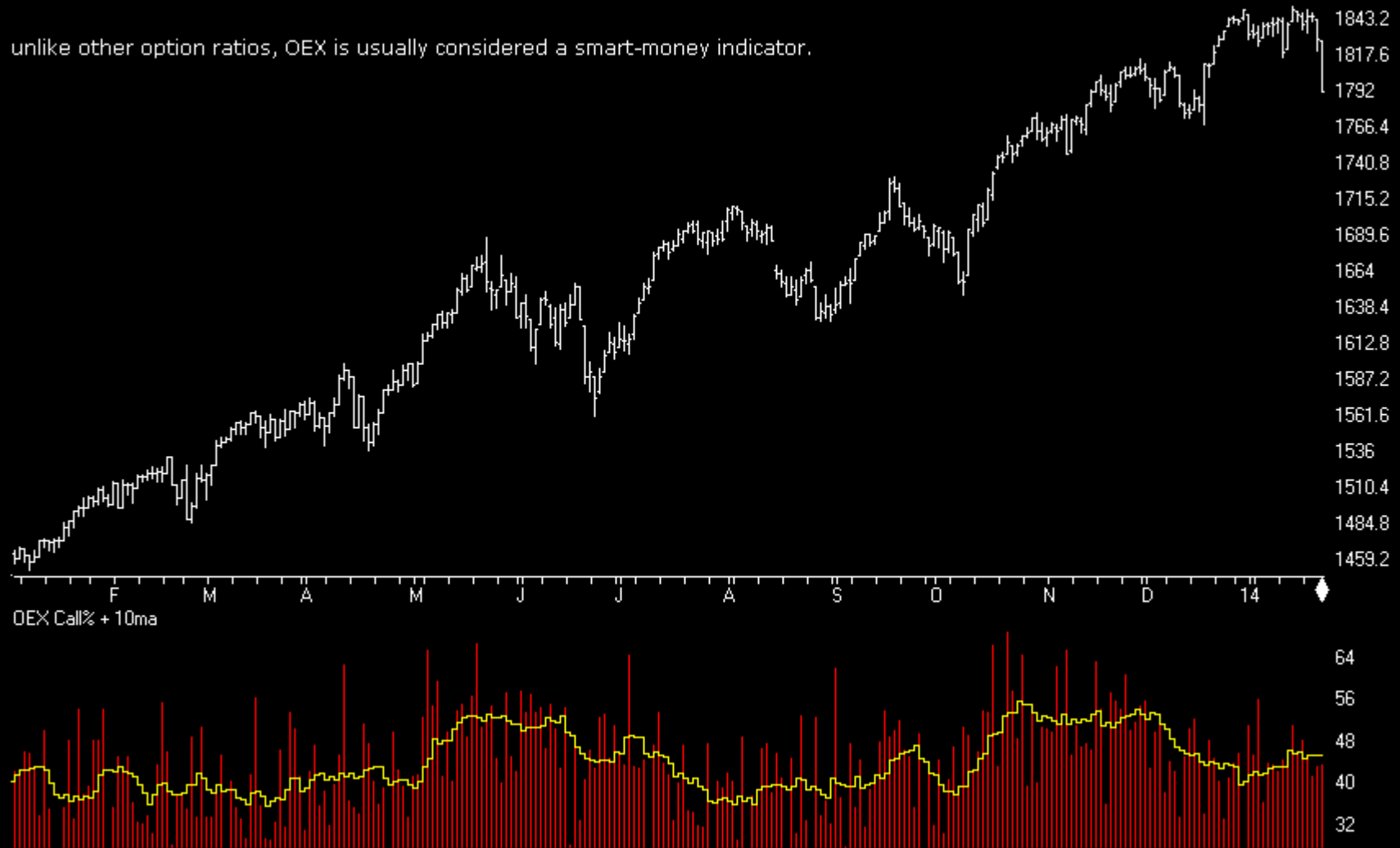


Sentiment

Charts by AIQ TradingExpert

SP500 Index (Daily) + OEX Calls%

unlike other option ratios, OEX is usually considered a smart-money indicator.

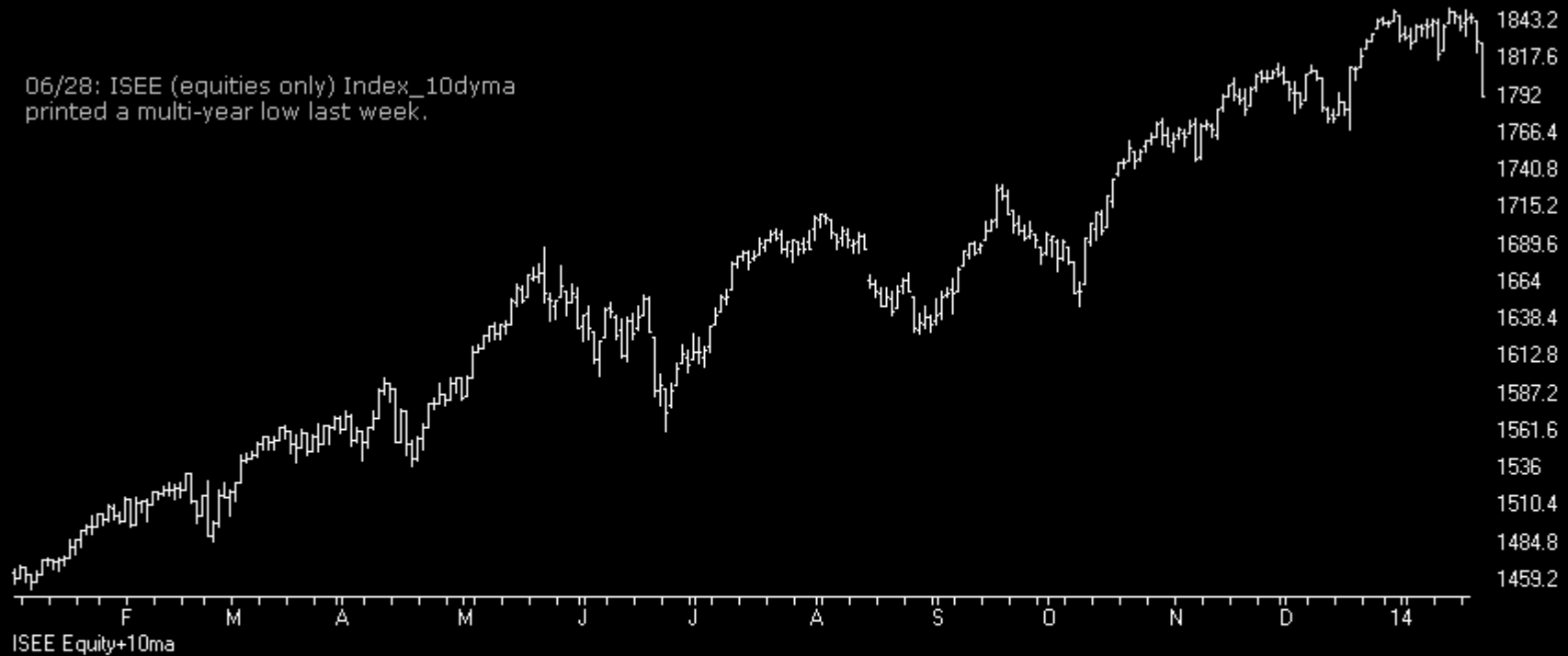


Sentiment

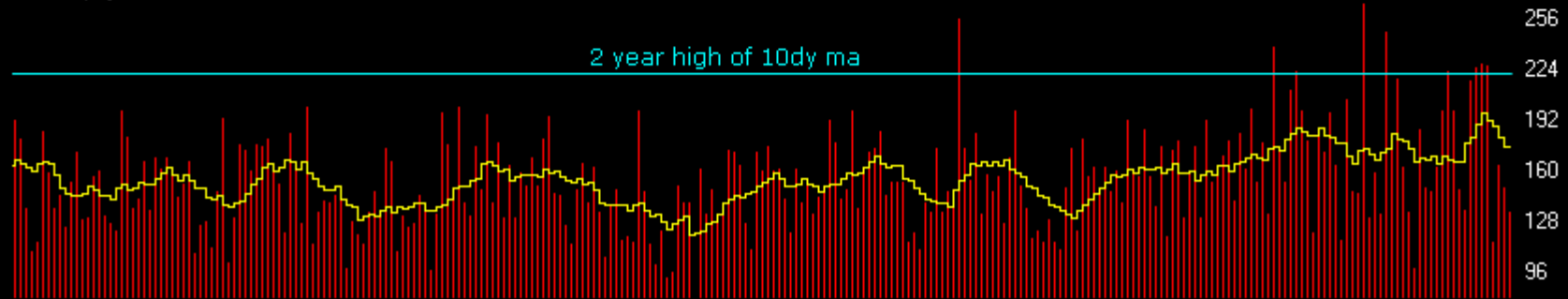
Charts by AIQ TradingExpert

SP500 Index (Daily) + ISEE (equities only)

06/28: ISEE (equities only) Index_10dyma printed a multi-year low last week.



ISEE Equity+10ma

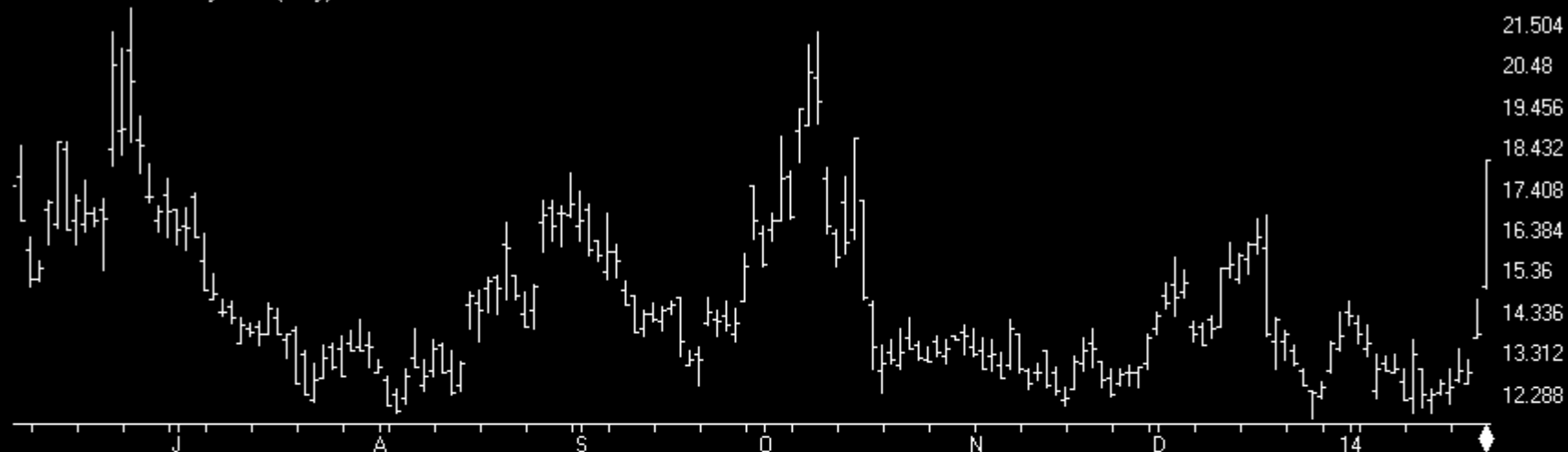


2 year high of 10dy ma

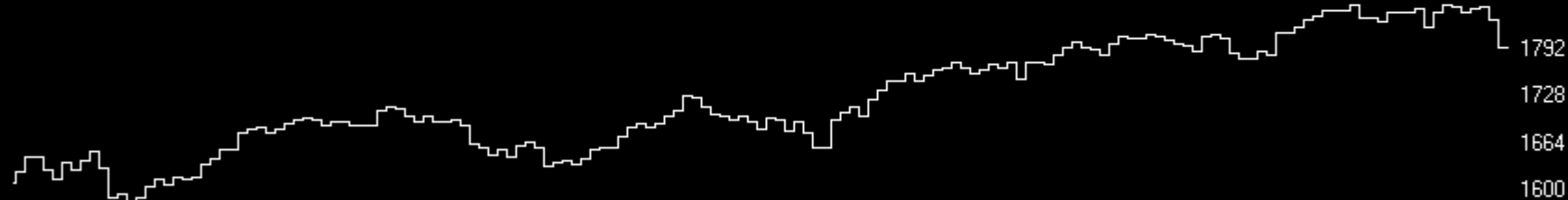
Sentiment

Charts by AIQ TradingExpert

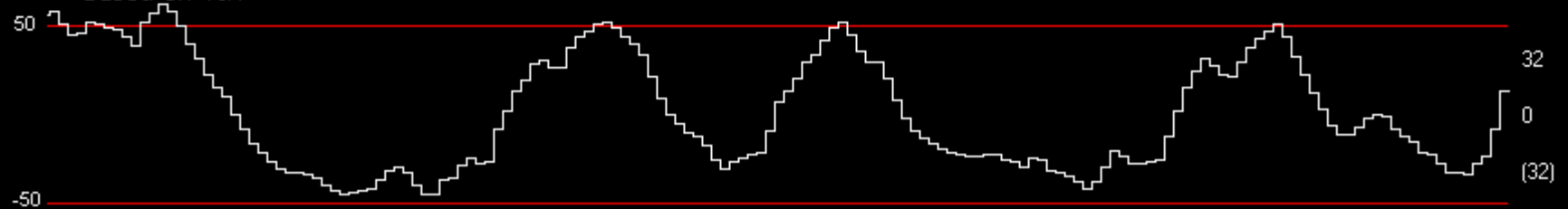
VIX - S&P 500 Volatility Index (Daily)



3PX



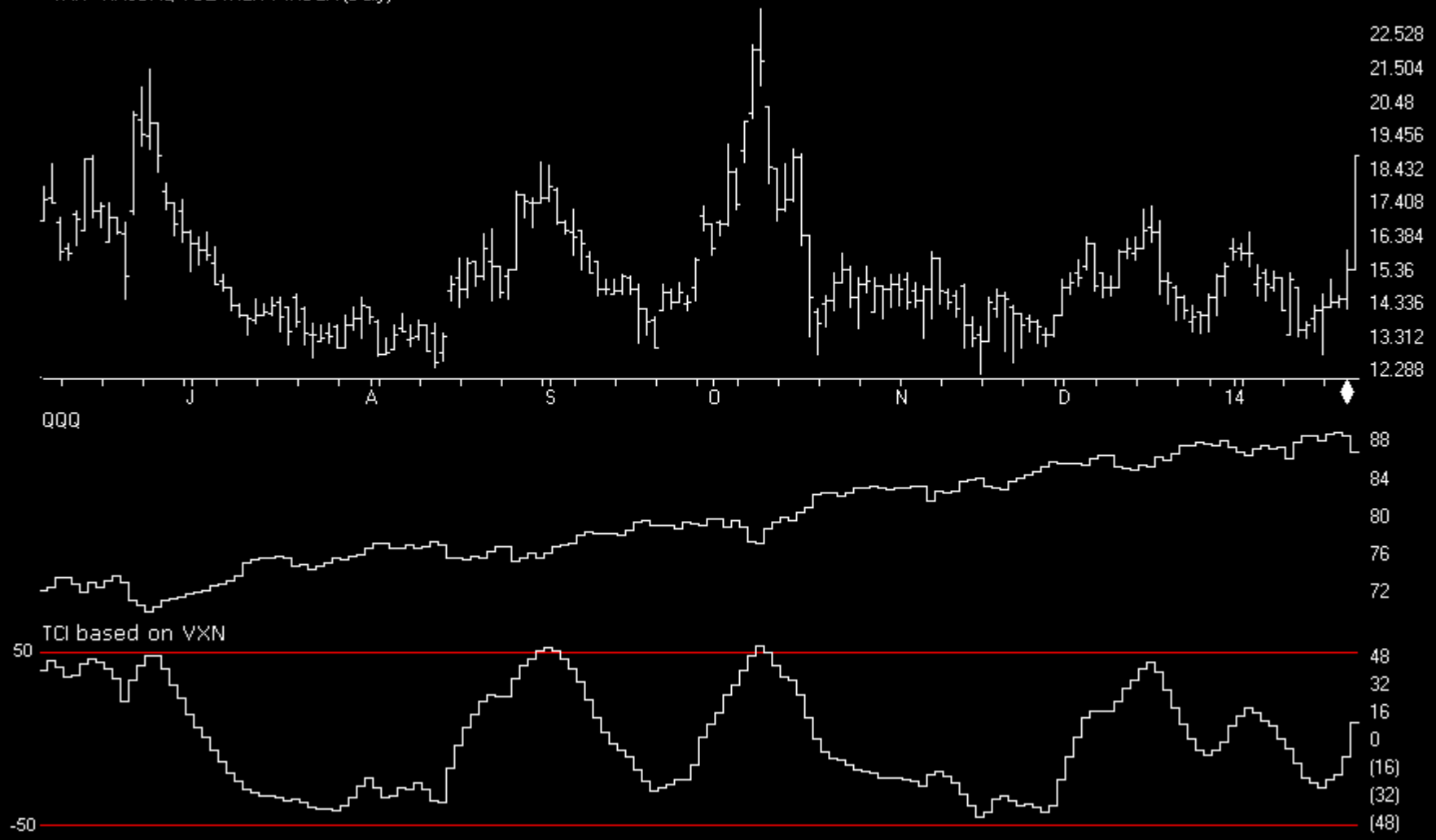
TCI based on VIX



Sentiment

Charts by AIQ TradingExpert

VIXN - NASDAQ VOLATILITY INDEX (Daily)



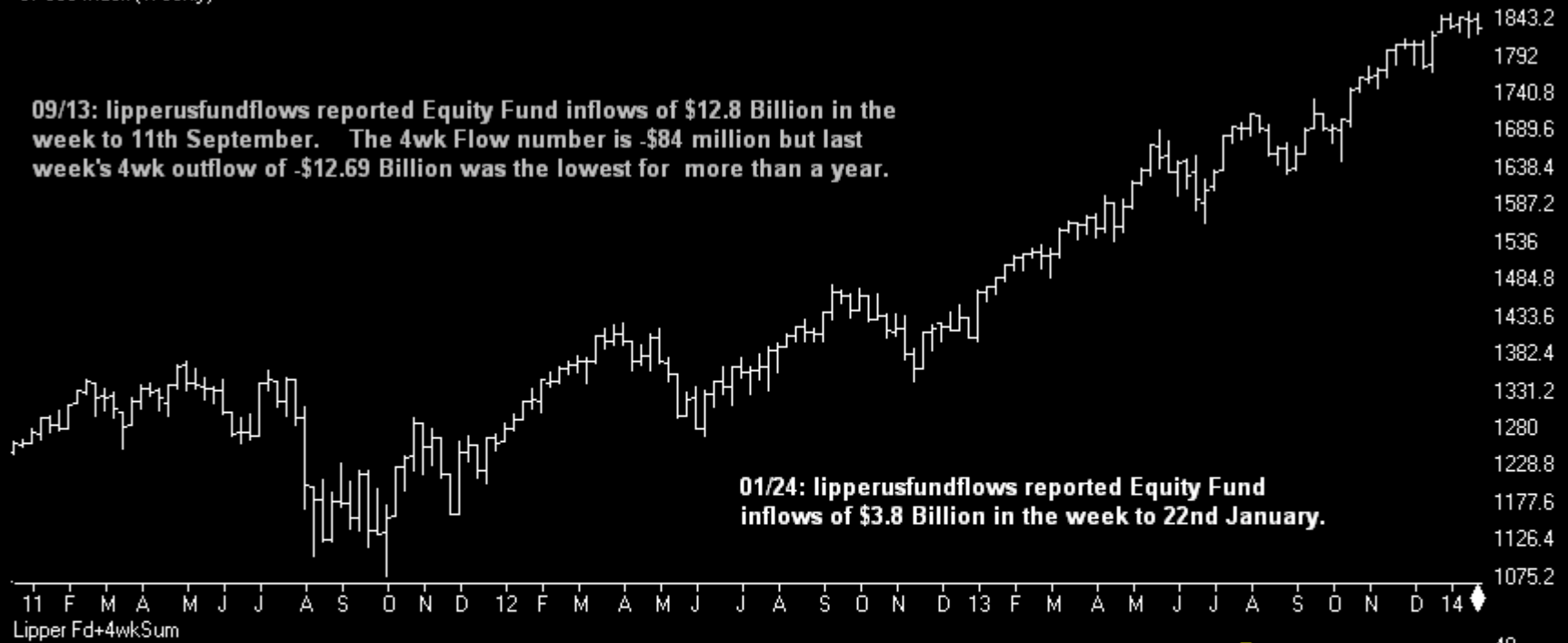
Sentiment

Charts by AIQ TradingExpert

SP500 Index (Weekly)

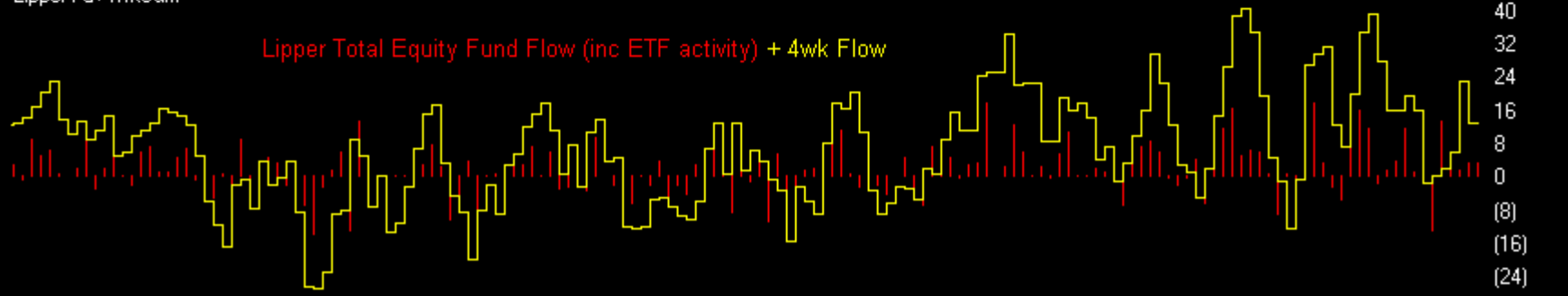
09/13: lipperusfundflows reported Equity Fund inflows of \$12.8 Billion in the week to 11th September. The 4wk Flow number is -\$84 million but last week's 4wk outflow of -\$12.69 Billion was the lowest for more than a year.

01/24: lipperusfundflows reported Equity Fund inflows of \$3.8 Billion in the week to 22nd January.



Lipper Fd+4wkSum

Lipper Total Equity Fund Flow (inc ETF activity) + 4wk Flow

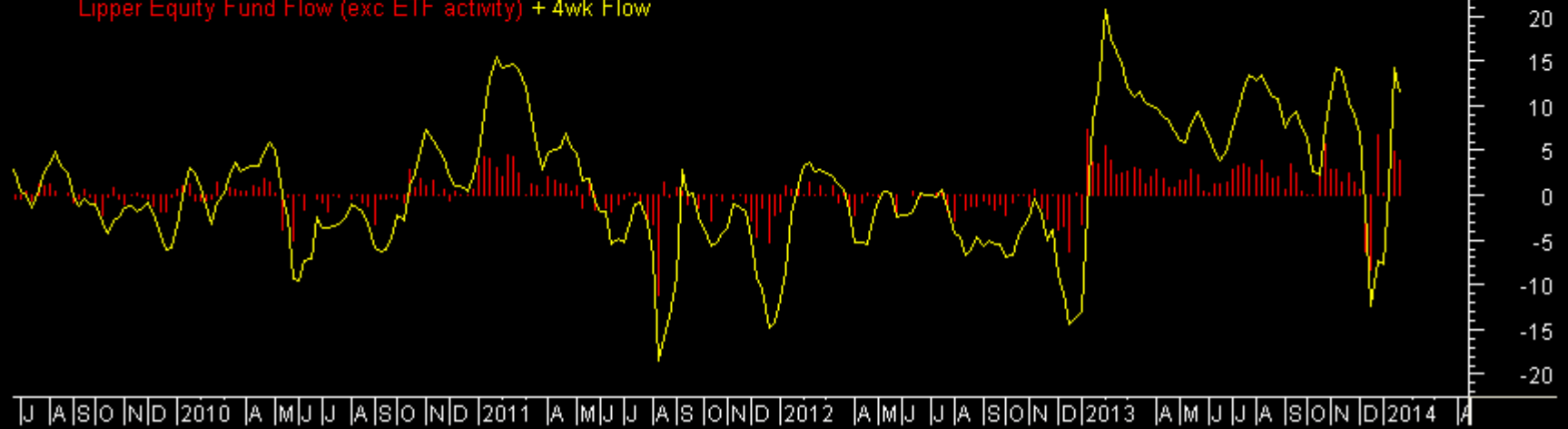


Sentiment

LIPPER Equity Fds (exc ETF) net flow (\$billion)

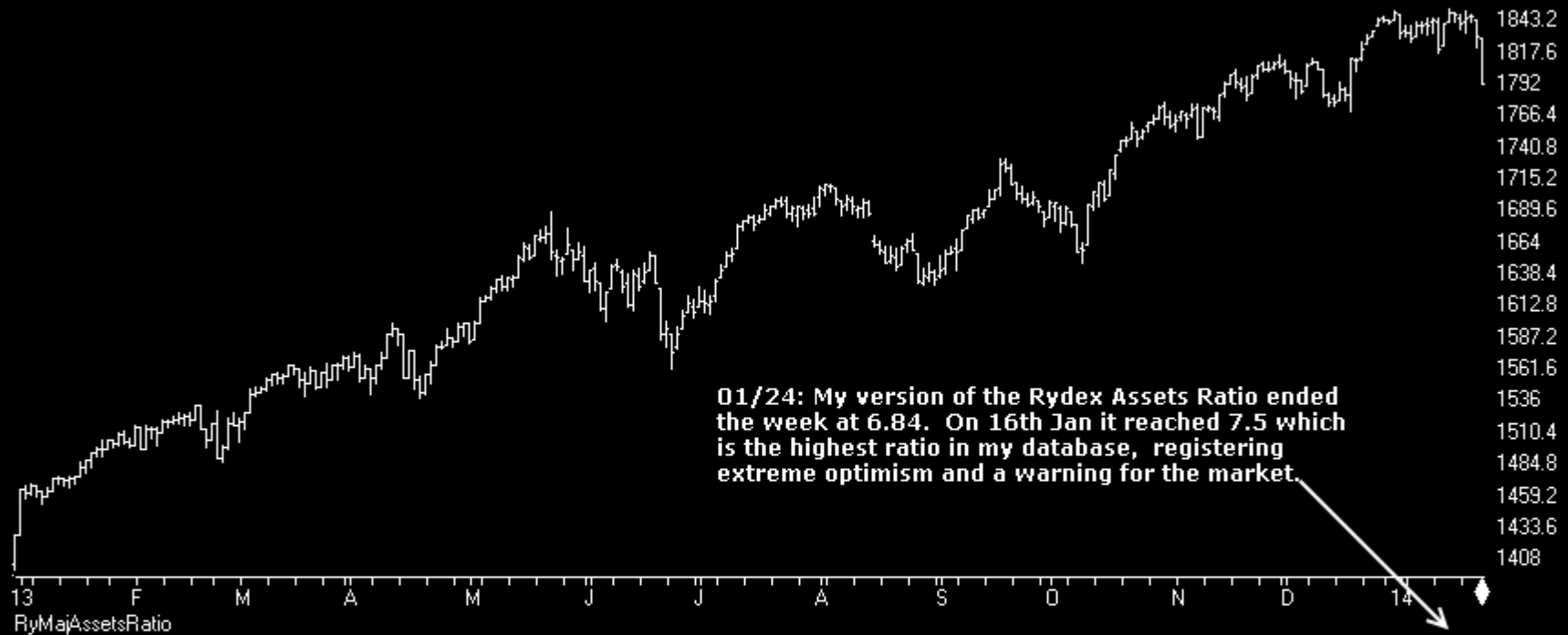


Lipper Equity Fund Flow (exc ETF activity) + 4wk Flow



Sentiment

SP500 Index (Daily) + Rydex Assets Ratio



Bonds

Charts by AIQ TradingExpert

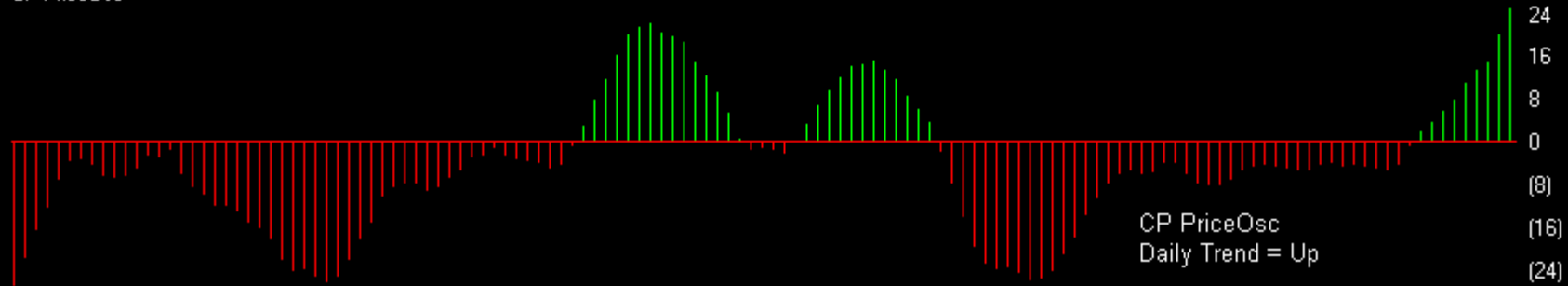
06/07: In a weak price location below 117.15, the major poc. On Tuesday chart printed its lowest level since April 2012.

30 Lehman 20+ Year T Bond ETF (Daily)

12/20: 10mn poc migrated down to 102.85



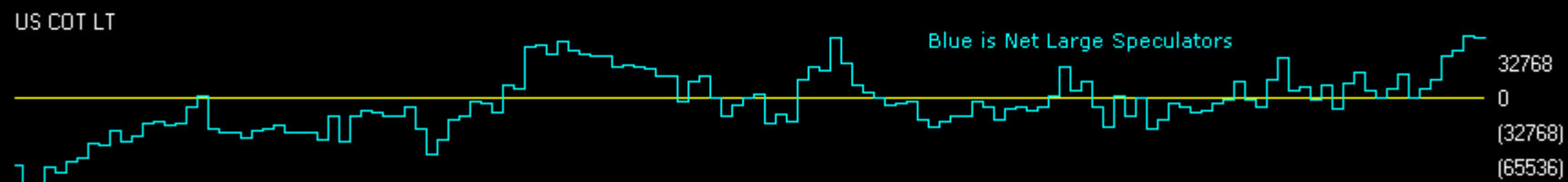
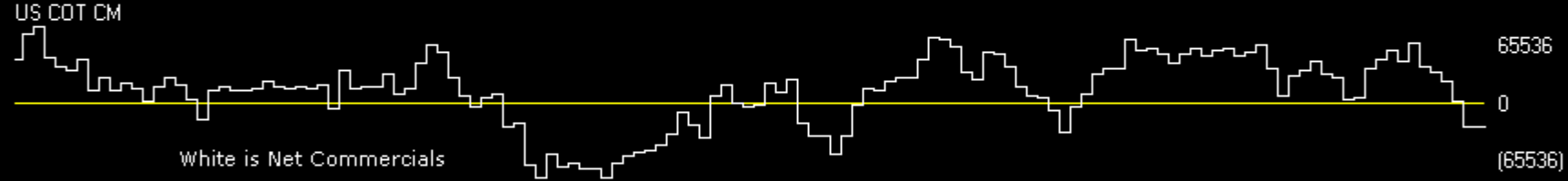
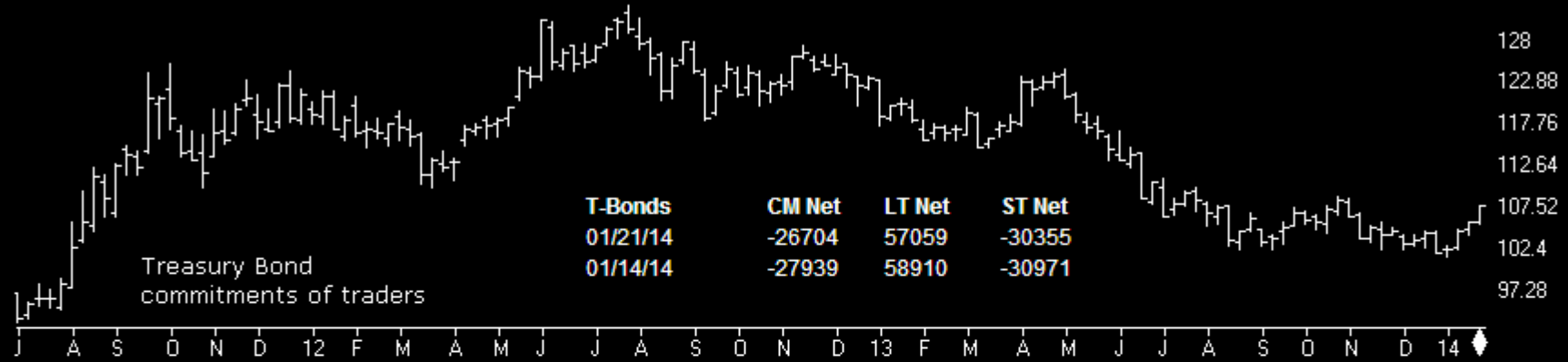
CP PriceOsc



Bonds

Charts by AIQ TradingExpert

T-BONDS	CM Net	CM Long	CM Short	LT Net	LT Long	LT Short	ST Net	ST Long	ST Short
01/21/14	1.3	0.0	83.3	97.4	100.0	71.3	74.8	60.2	1.0
01/14/14	0.0	0.0	93.3	100.0	100.0	43.8	73.6	62.4	4.1



Gold

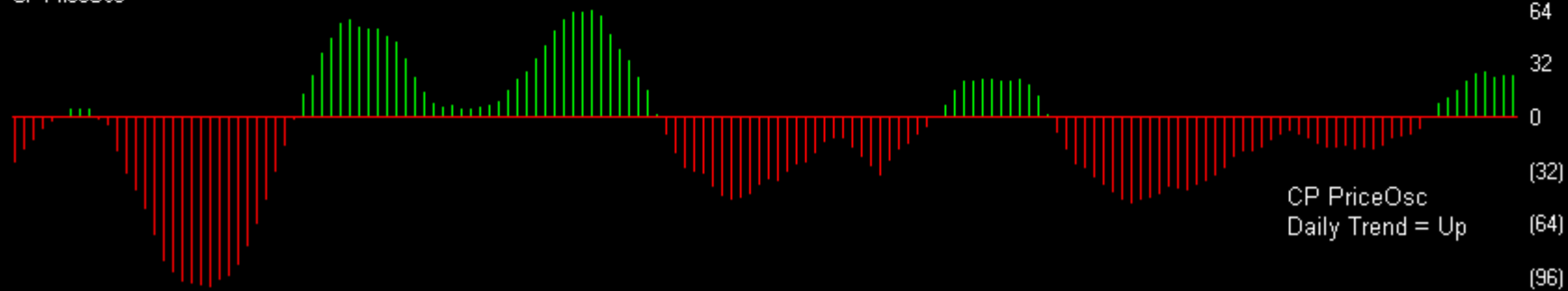
Charts by AIQ TradingExpert

STREETTRACKS GOLD TRUST ETF (Daily) (GLD)

10/11: Printed a 3month low last week and remains below 134.17, the 12mn poc, in a weak price location.



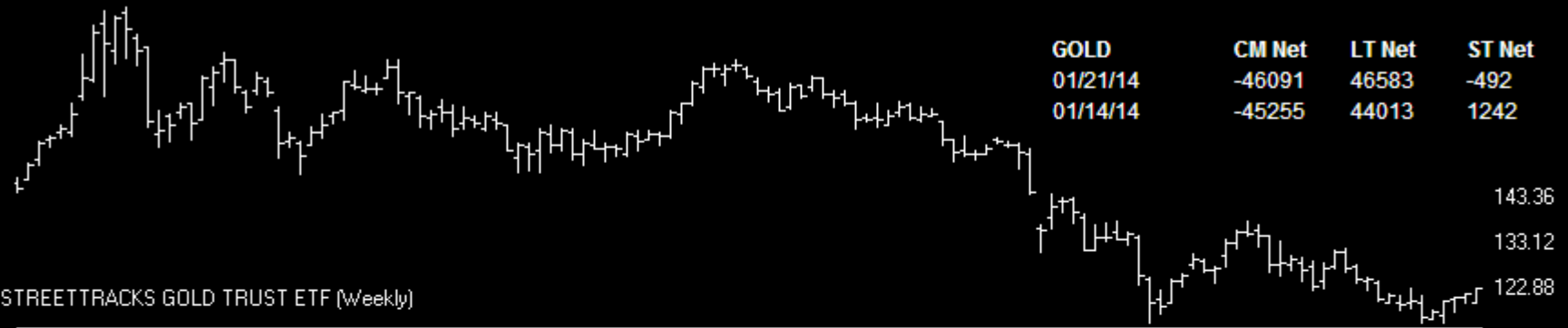
CP PriceOsc



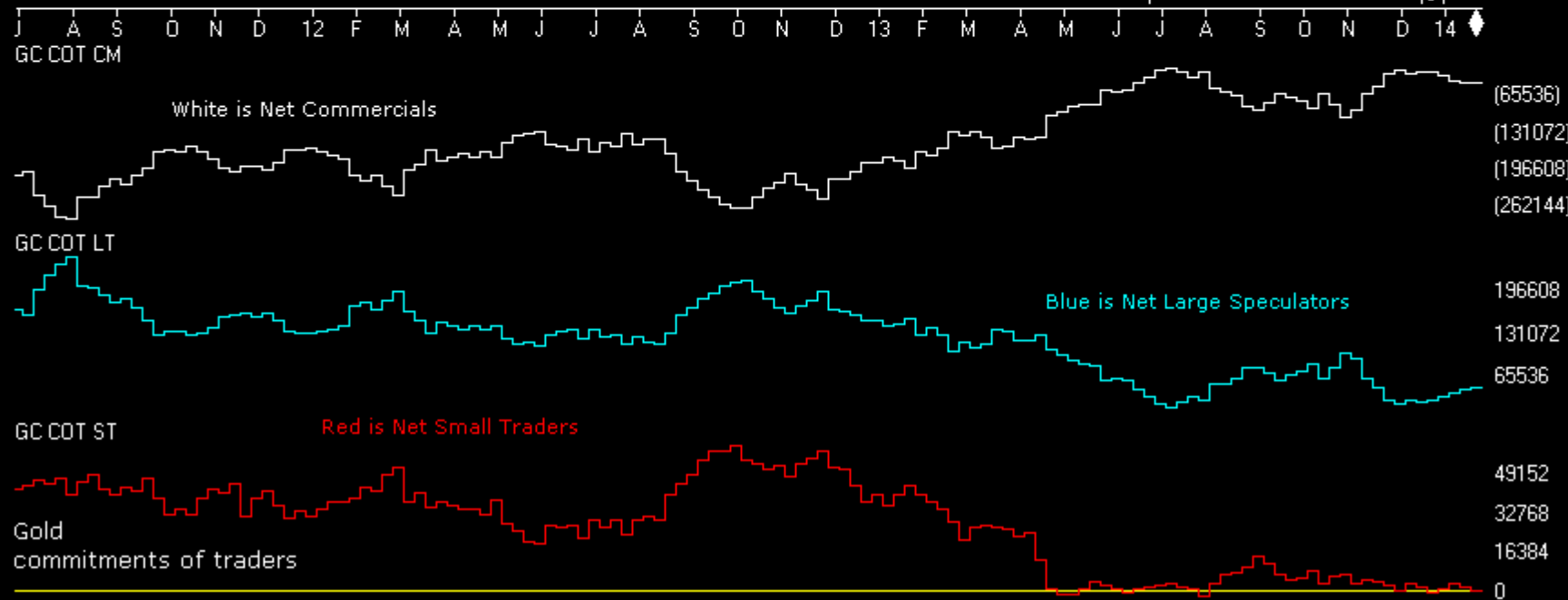
Gold

Charts by AIQ TradingExpert

GOLD	CM Net	CM Long	CM Short	LT Net	LT Long	LT Short	ST Net	ST Long	ST Short
01/21/14	71.8	77.8	31.3	30.8	29.4	58	12.5	15.2	70.9
01/14/14	72.8	63.9	26.2	27.5	22.2	59.8	22.7	16.9	57.6



STREETTRACKS GOLD TRUST ETF (Weekly)



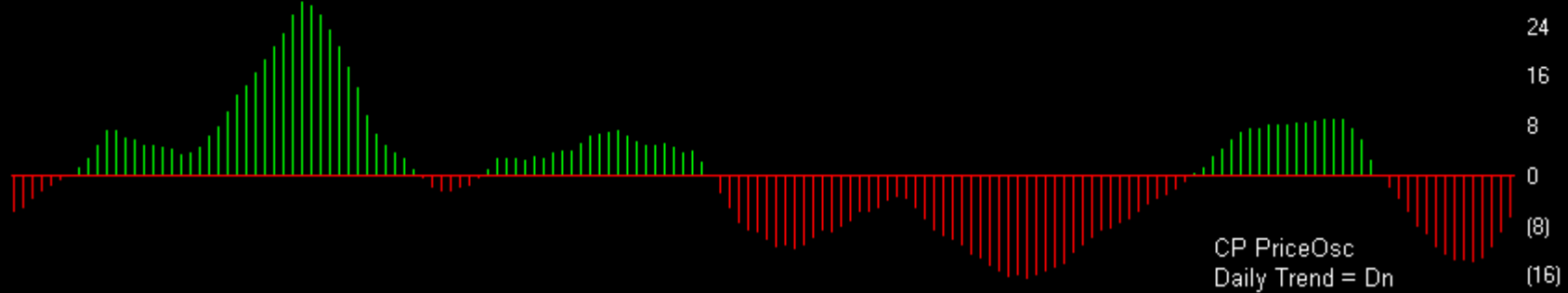
oil

Charts by AIQ TradingExpert

43 UNITED STATES OIL FUND (Daily) (USO)



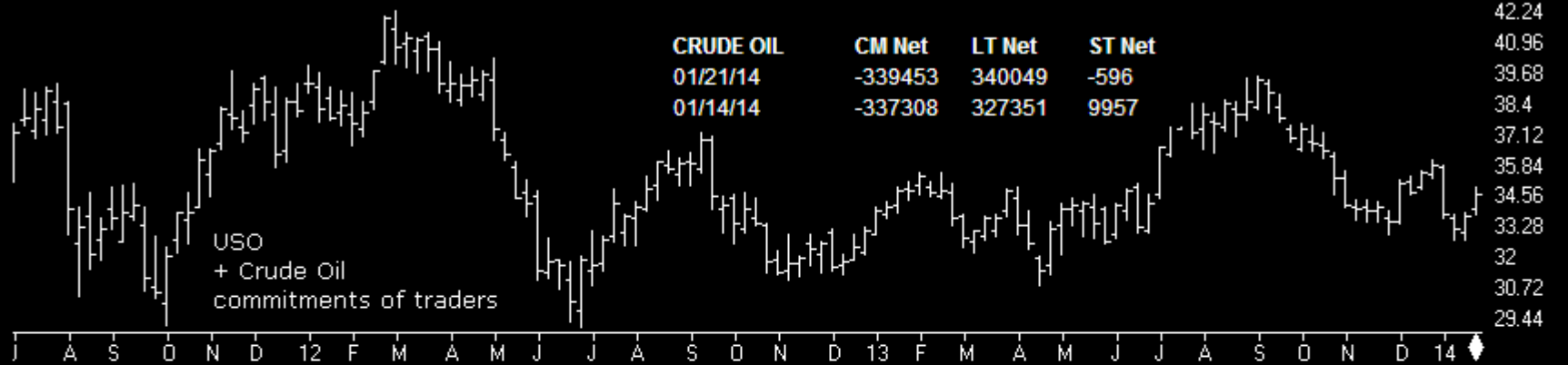
CP PriceOsc



Oil

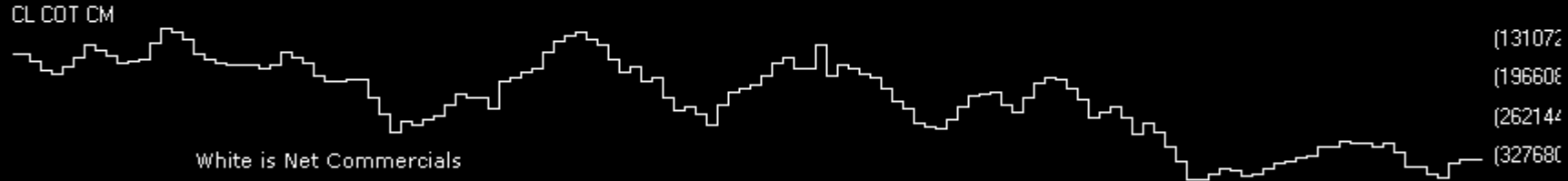
Charts by AIQ TradingExpert

CRUDE OIL	CM Net	CM Long	CM Short	LT Net	LT Long	LT Short	ST Net	ST Long	ST Short
01/21/14	52.7	6.9	31.8	64.1	100.0	89.7	0.0	37.1	100.0
01/14/14	56.2	3.3	19.6	44.2	98.0	93.3	41.4	86.0	96.6



CRUDE OIL	CM Net	LT Net	ST Net
01/21/14	-339453	340049	-596
01/14/14	-337308	327351	9957

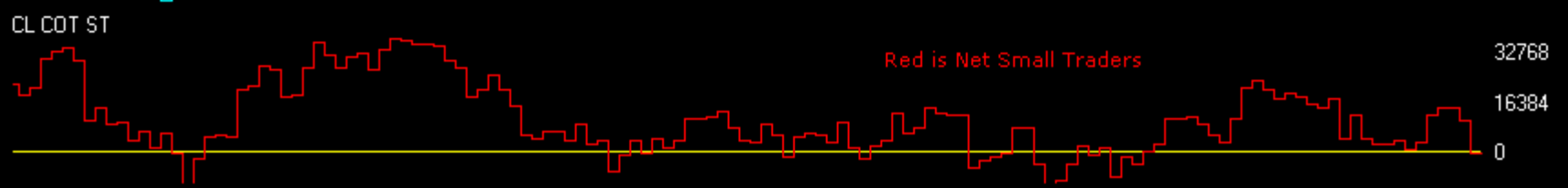
42.24
40.96
39.68
38.4
37.12
35.84
34.56
33.28
32
30.72
29.44



(131072
(196606
(262144
(327680



327680
262144
196608
131072



32768
16384
0

J A S O N D 12 F M A M J J A S O N D 13 F M A M J J A S O N D 14

CL COT CM

CL COT LT

CL COT ST

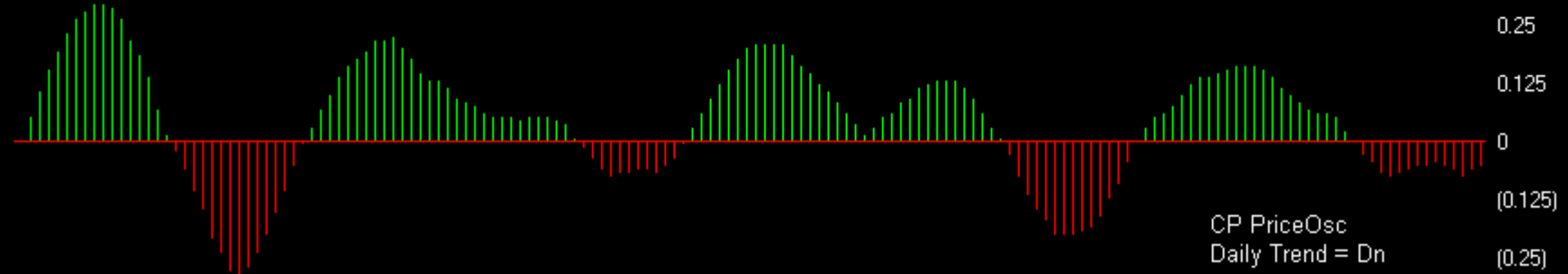
Dollar

Charts by AIQ TradingExpert

EURUSD (Daily)



CP PriceOsc



Dollar

Charts by AIQ TradingExpert

EURUSD	CM Net	CM Long	CM Short	LT Net	LT Long	LT Short	ST Net	ST Long	ST Short
01/21/14	100.0	100.0	20.7	5.8	3.5	61.9	0.0	0.0	100.0
01/14/14	71.4	71.7	38.0	37.0	31.4	50.6	12.3	38.2	85.0



J A S O N D 12 F M A M J J A S O N D 13 F M A M J J A S O N D 14

EC COT CM NET



EC COT LT NET



EC COT ST

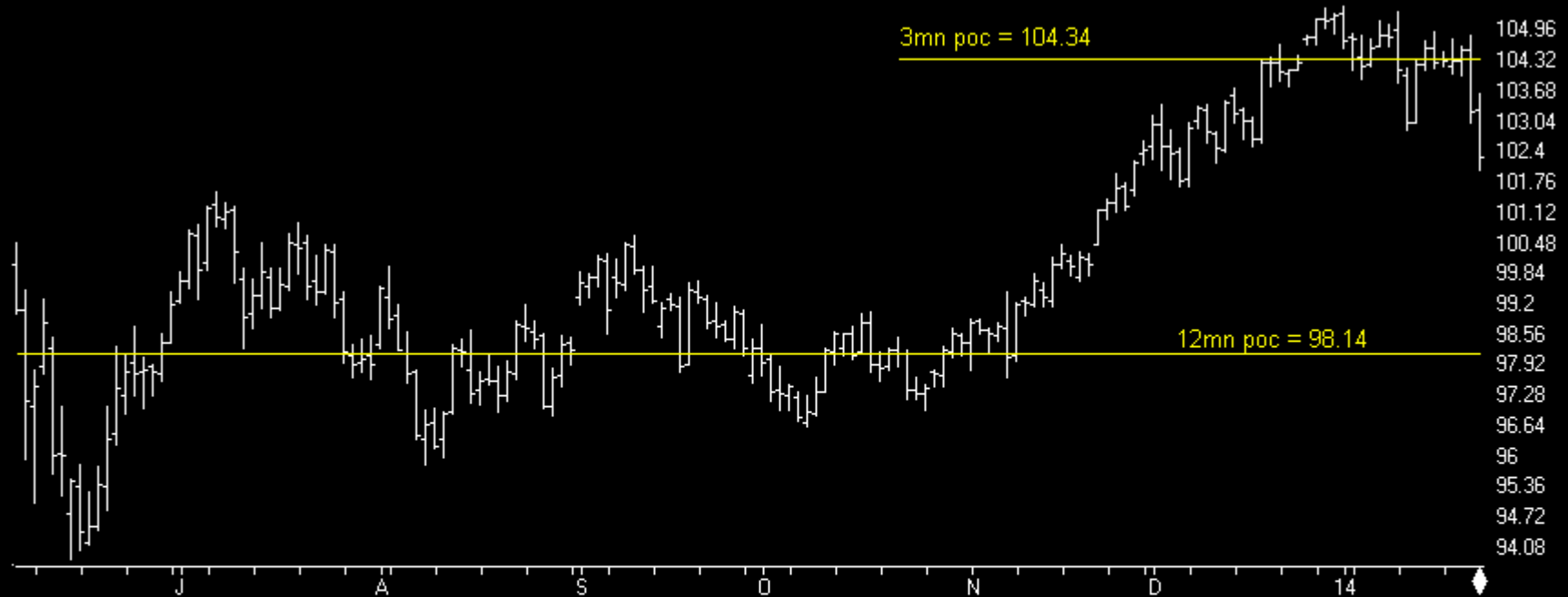


EURUSD (Weekly)
commitments of traders

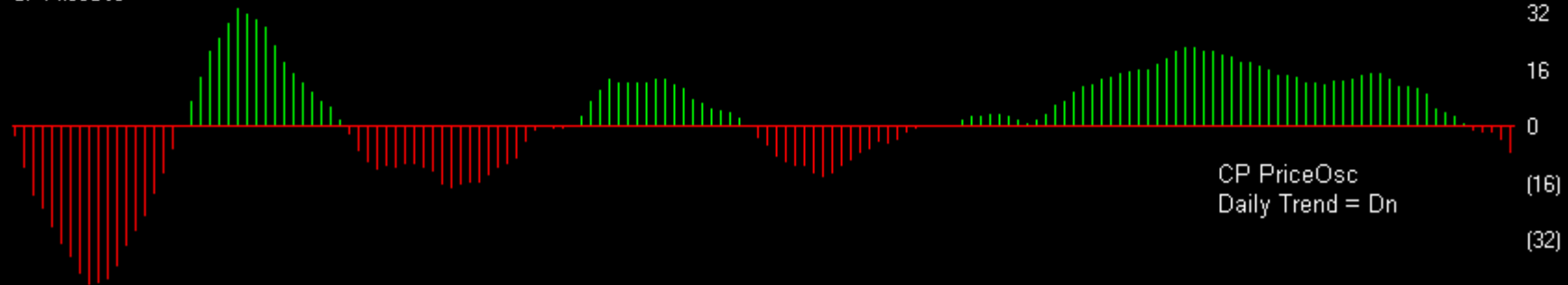
Dollar

Charts by AIQ TradingExpert

53 USDJFY (Daily)



CP PriceOsc



Dollar

Charts by AIQ TradingExpert

JPYUSD	CM Net	CM Long	CM Short	LT Net	LT Long	LT Short	ST Net	ST Long	ST Short
01/21/14	62.0	85.2	81.5	33.3	9.2	51.0	48.4	26.5	6.8
01/14/14	66.6	90.5	73.2	29.7	0.0	51.8	42.9	26.0	15.3



Dollar

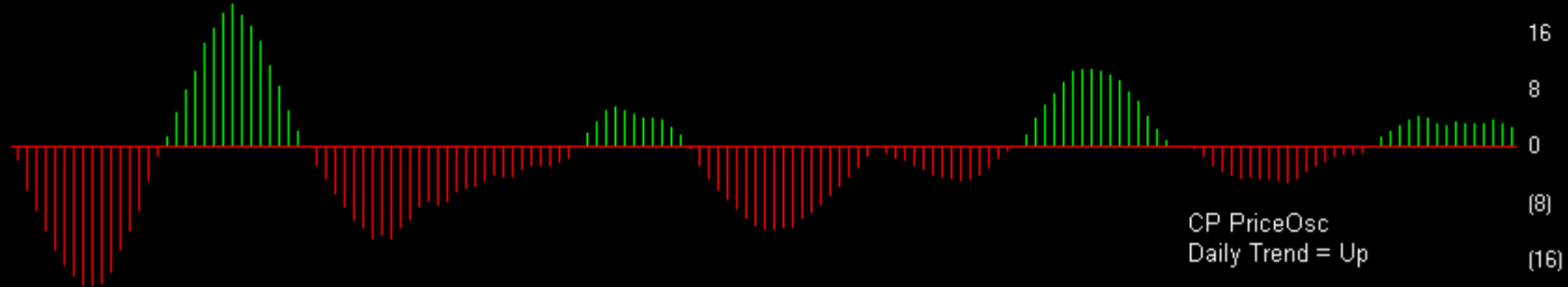
Charts by AIQ TradingExpert



US DOLLAR INDEX (Daily)



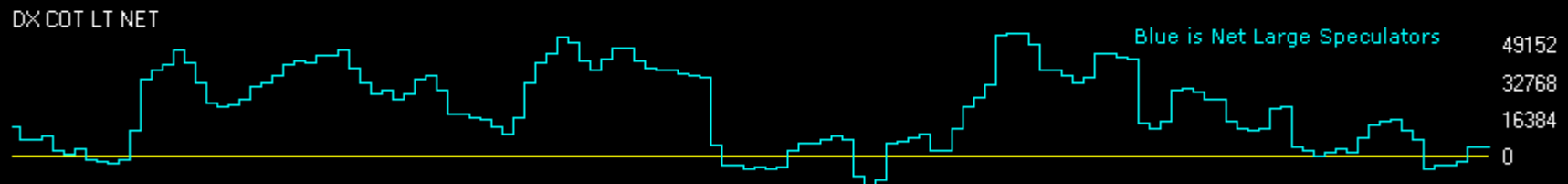
CP PriceOsc



Dollar

Charts by AIQ TradingExpert

US DOLLAR INDEX (Weekly)



<http://www.chartprofitwebcast.com>