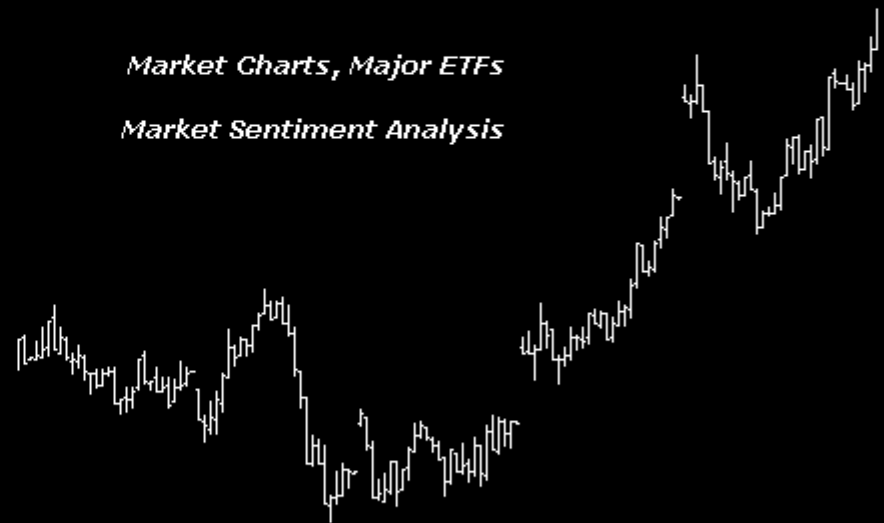


Charts to Monday 3rd February 2014

Chart Profit eBook

Market Charts, Major ETFs

Market Sentiment Analysis



www.aiqsystems.com

www.chartprofitwebcast.com

terms of service

Stock Market Summary

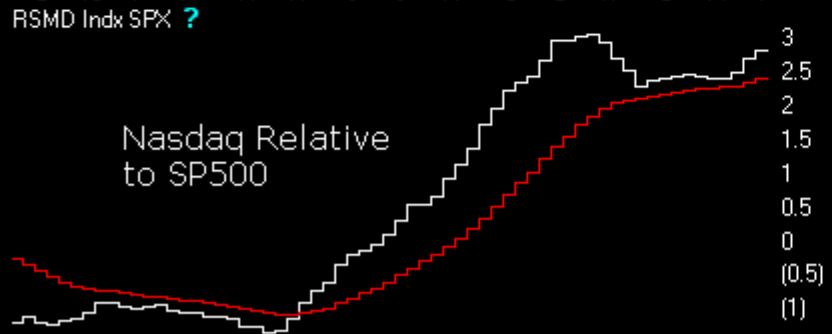
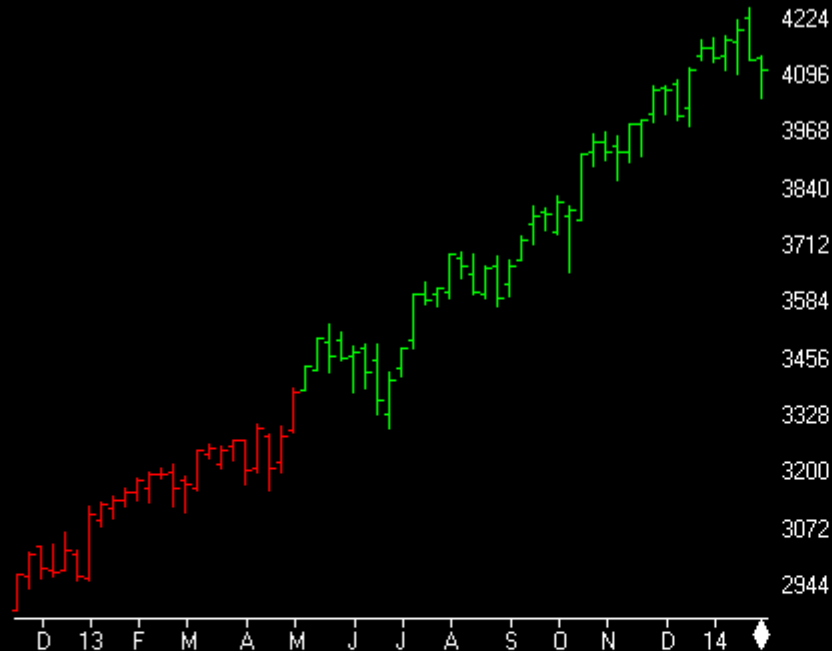
From pre-open comment today - Monday 3rd February

Strictly applying my rules I had to mark Responsive Buying (green-at-bottom) on Friday but there are too many negatives to consider this any kind of indication of strength. If time is spent around the 1780 area of price it is possible that the 4mn poc (currently at 1835.50) could migrate lower and imo that would most likely be a negative development. I'm watching levels on SPY and IWM as detailed below.

Stock index ETFs: All four ETFs have Momentum (PriceOsc) down and negative. Key charts are SPY which is printing below 179.39, its 4mn poc and IWM which is printing above 110.87, its 4mn poc. If IWM breaks below 110.87 it would signal further weakness.

Breadth: CP Market Timing System stayed negative for Nyse, turned negative for Nasdaq, remained neutral for R2000, and stayed negative for UK.

NASDAQ COMPOSITE (Weekly)



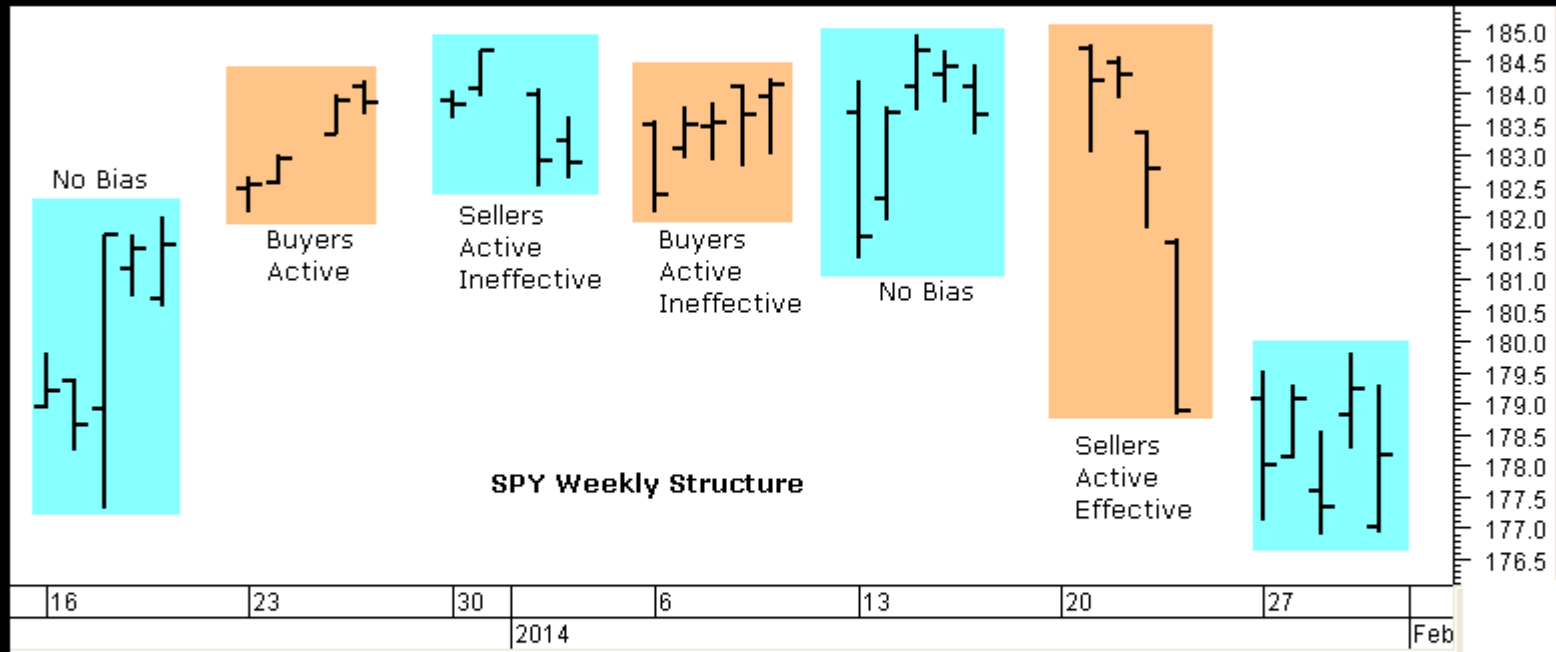
ChartProfit Breadth System - wk ending 01/31

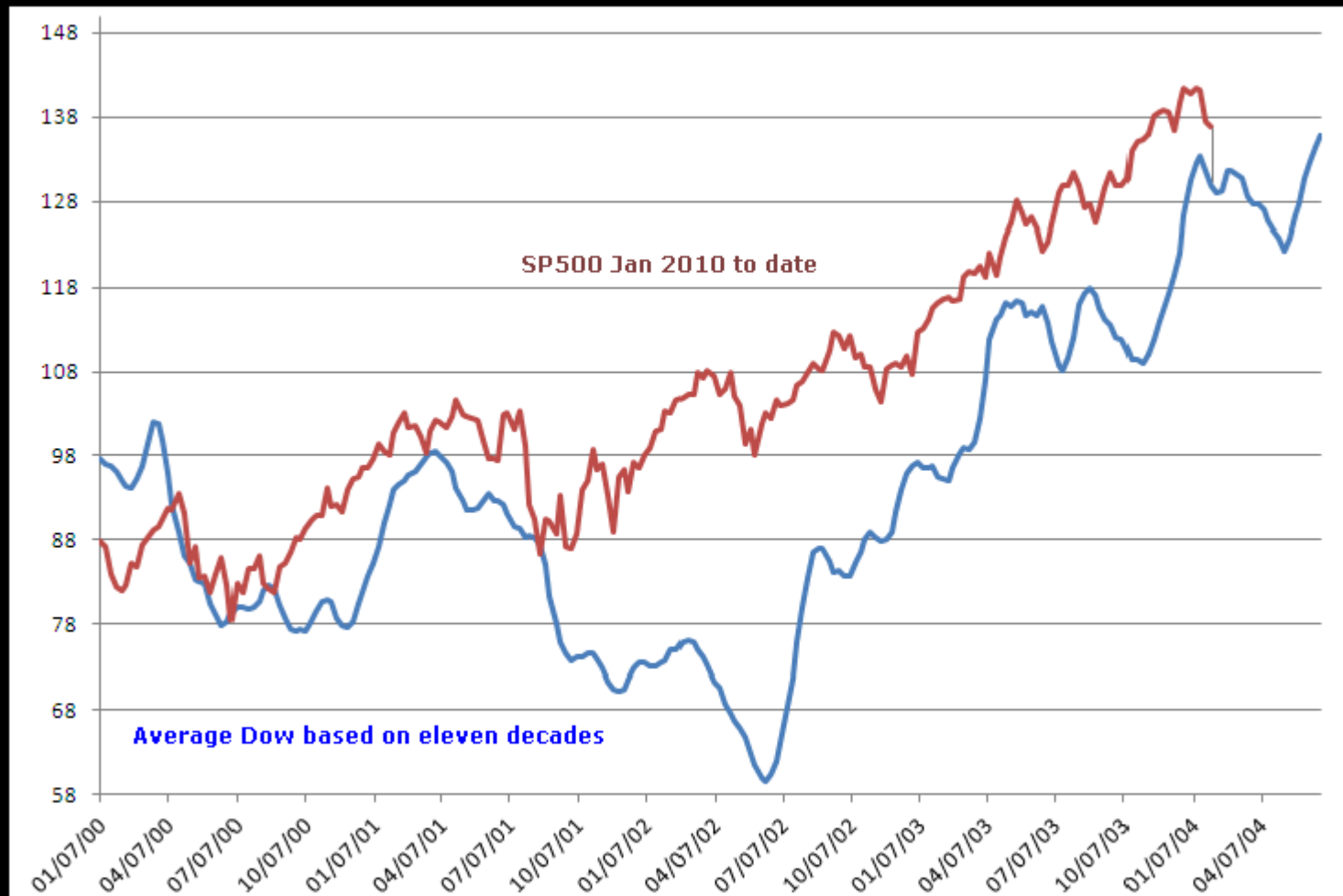
	-5	-4	-3	-2	-1	↓
NYSE	67	64	64	63	42	41
NasDaq	72	72	72	72	58	47
SP500	75	73	72	65	36	39
ND100	76	78	72	74	50	54
R2000	73	70	66	66	51	40
UK	71	74	76	77	59	54

number = % stocks >50day ma

Relative to SPX wk ending 01/31

	-5	-4	-3	-2	-1	↓
NasDaq Comp	█	█	█	█	█	█
NasDaq 100	█	█	█	█	█	█
SOX	█	█	█	█	█	█
Russell 2000	█	█	█	█	█	█





Commitments of Traders

Charts by AIQ TradingExpert

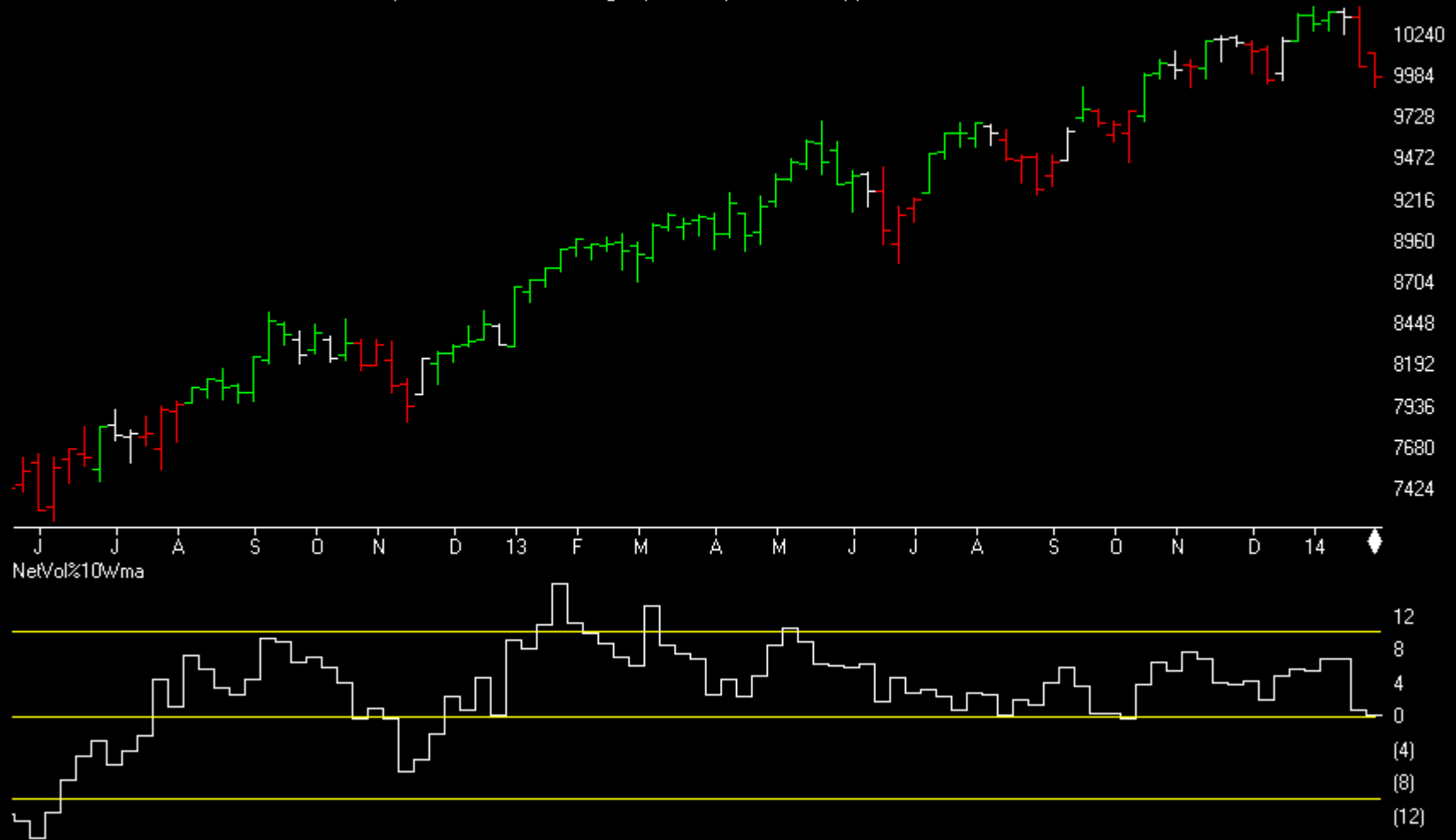
C.O.T.
Quick
View

	SP500	GOLD	CRUDE OIL	T-BONDS	GBPUSD	JPYUSD	EURUSD	USD IX
	CM Net	CM Net	CM Net	CM Net	CM Net	CM Net	CM Net	CM Net
	CM Long	CM Long	CM Long	CM Long	CM Long	CM Long	CM Long	CM Long
	CM Short	CM Short	CM Short	CM Short	CM Short	CM Short	CM Short	CM Short
	LT Net	LT Net	LT Net	LT Net	LT Net	LT Net	LT Net	LT Net
	LT Long	LT Long	LT Long	LT Long	LT Long	LT Long	LT Long	LT Long
	LT Short	LT Short	LT Short	LT Short	LT Short	LT Short	LT Short	LT Short
	ST Net	ST Net	ST Net	ST Net	ST Net	ST Net	ST Net	ST Net
	ST Long	ST Long	ST Long	ST Long	ST Long	ST Long	ST Long	ST Long
	ST Short	ST Short	ST Short	ST Short	ST Short	ST Short	ST Short	ST Short
01/28/14	38.4	49.5	29.0	0.0	4.7	27.3	74.8	62.1
01/21/14	18.1	71.8	52.7	1.3	20.2	62.0	100.0	59.5
01/28/14	66.4	21.7	0.0	10.9	32.9	63.2	88.1	45.1
01/21/14	56.0	77.8	6.9	0.0	36.0	85.2	100.0	55.6
01/28/14	68.2	45.9	49.8	100.0	97.8	100.0	42.7	48.1
01/21/14	93.2	27.8	31.8	83.3	84.9	81.5	20.7	52.4
01/28/14	34.7	56.3	81.5	97.4	99.1	66.5	23.8	31.7
01/21/14	33.3	30.8	64.1	97.4	80.5	33.3	5.8	32.5
01/28/14	41.2	93.3	100.0	91.0	78.4	24.4	14.5	43.9
01/21/14	37.2	29.4	100.0	100.0	70.7	9.2	3.5	30.6
01/28/14	56.3	53.7	63.2	32.2	0.3	0.0	45.4	56.0
01/21/14	46.6	68.8	89.7	71.3	14.5	51.0	61.9	51.7
01/28/14	59.0	0	14.4	89.1	87.3	68.8	26.8	67.8
01/21/14	76.9	2.2	0.0	74.8	78.4	48.4	0.0	91.1
01/28/14	33.5	0	76.0	51.1	43.0	44.1	5.1	87.3
01/21/14	44.2	0	37.1	60.2	48.9	26.5	0.0	92.2
01/28/14	28.1	73	100.0	0.0	7.3	4.3	62.8	41.2
01/21/14	4.5	70.9	100.0	1.0	16.7	6.8	100.0	3.5

Market Charts

Charts by AIQ TradingExpert

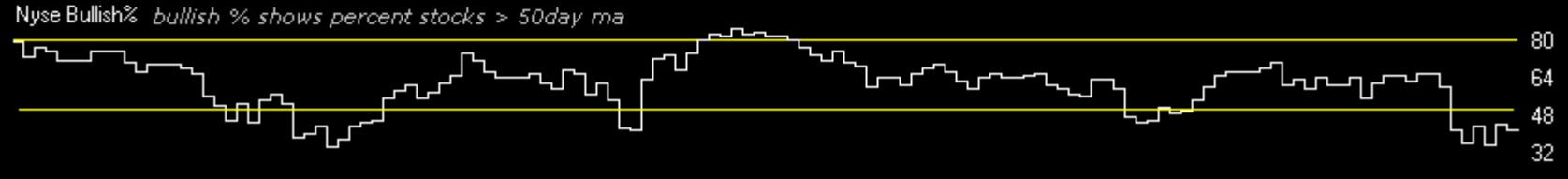
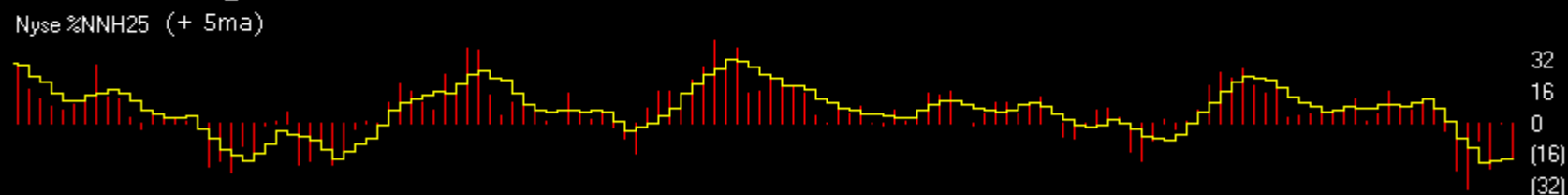
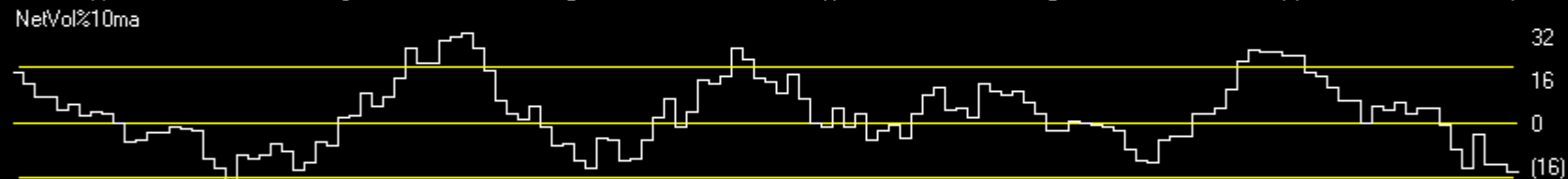
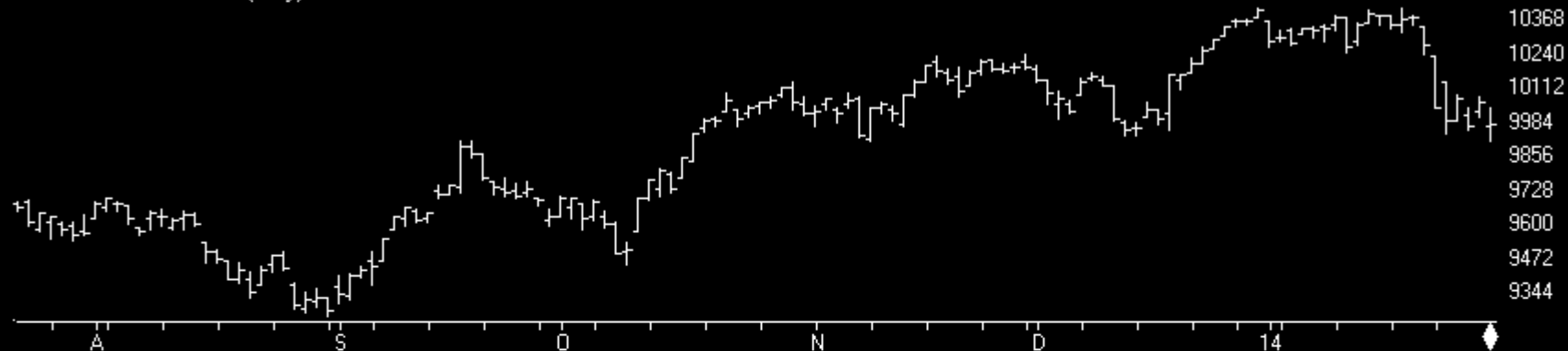
MARKET CHART NYSE (Weekly) + Chartprofit Market Timing System (color study)



Market Charts

Charts by AIQ TradingExpert

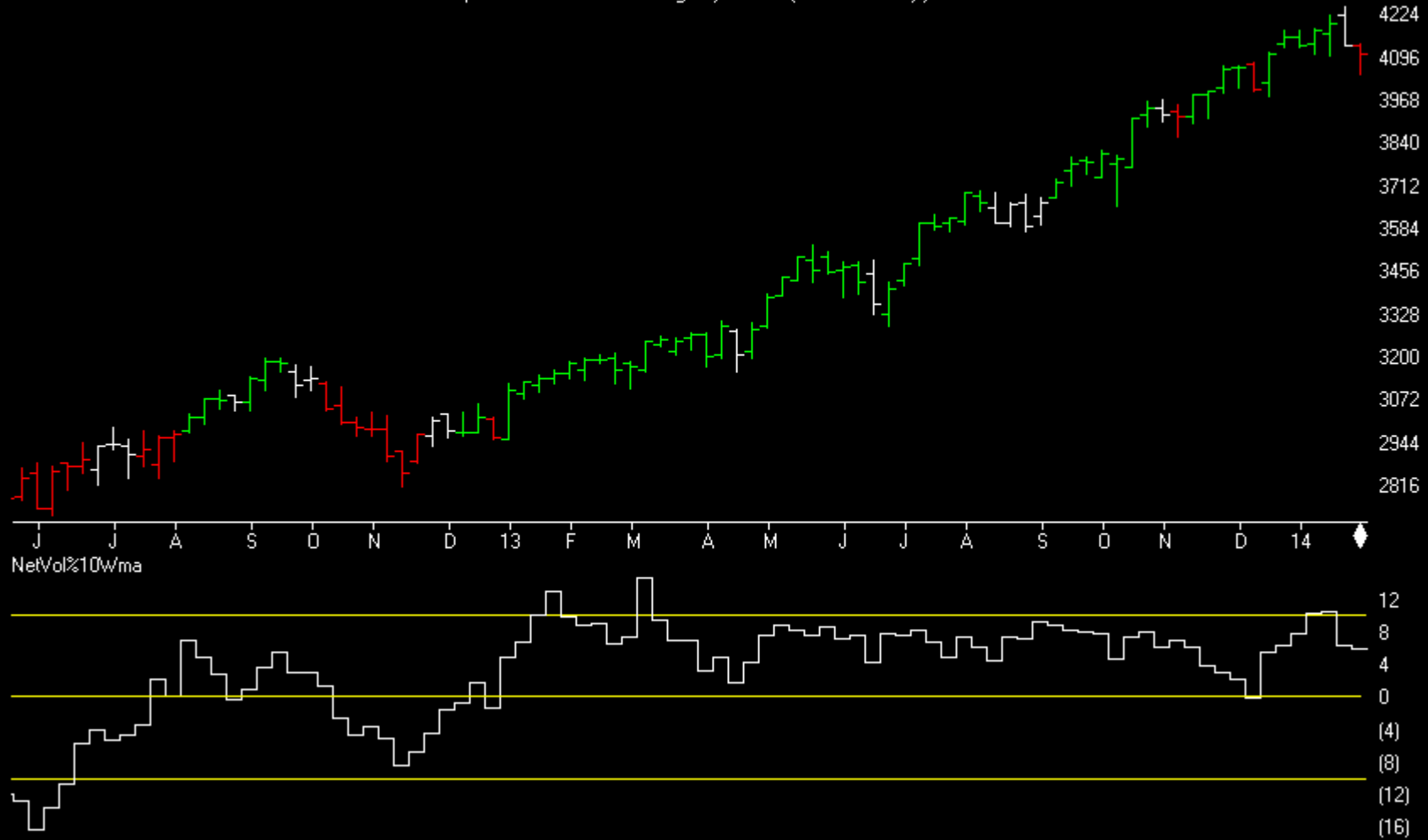
MARKET CHART NYSE (Daily)



Market Charts

Charts by AIQ TradingExpert

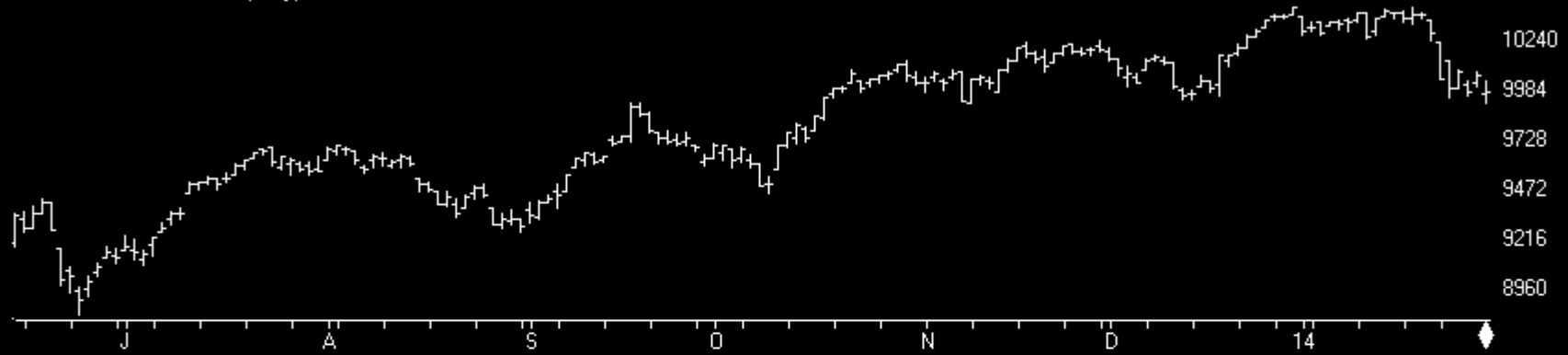
MARKET CHART NASDAQ 1800 (Weekly) + Chartprofit Market Timing System (color study)



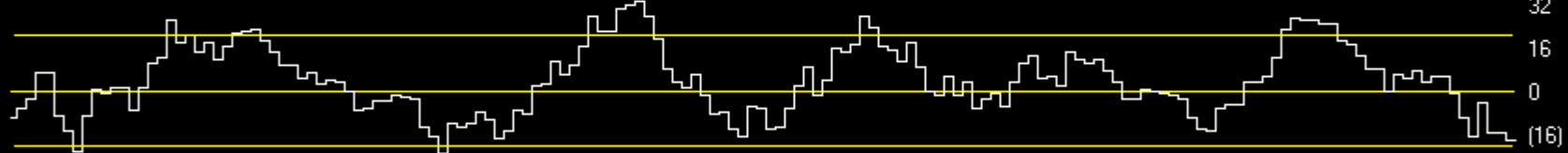
Market Charts

Charts by AIQ TradingExpert

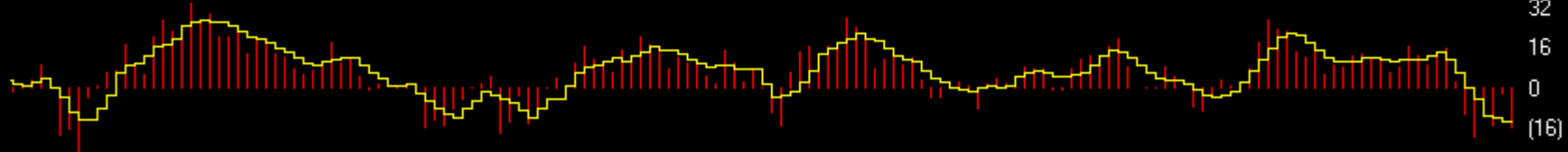
MARKET CHART NYSE (Daily)



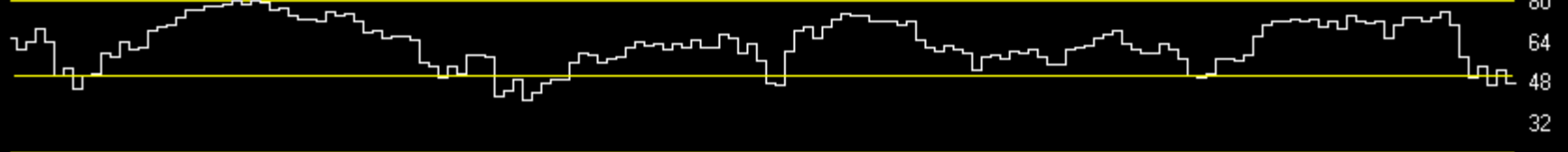
NetVol%10ma



Nasdaq %NNH25 (+ 5ma)



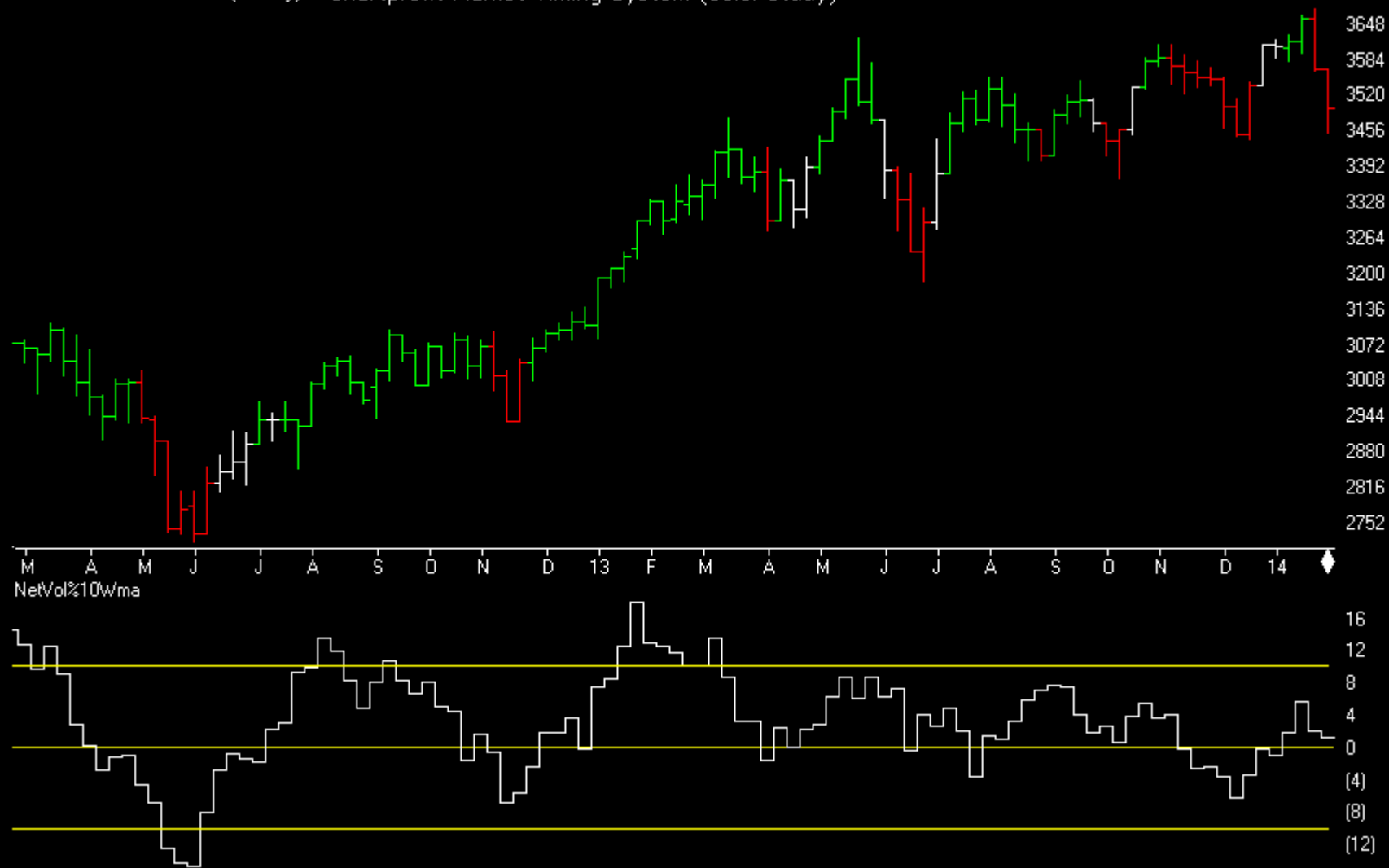
Nasdaq Bullish% *bullish % shows percent stocks > 50day ma*



Market Charts

Charts by AIQ TradingExpert

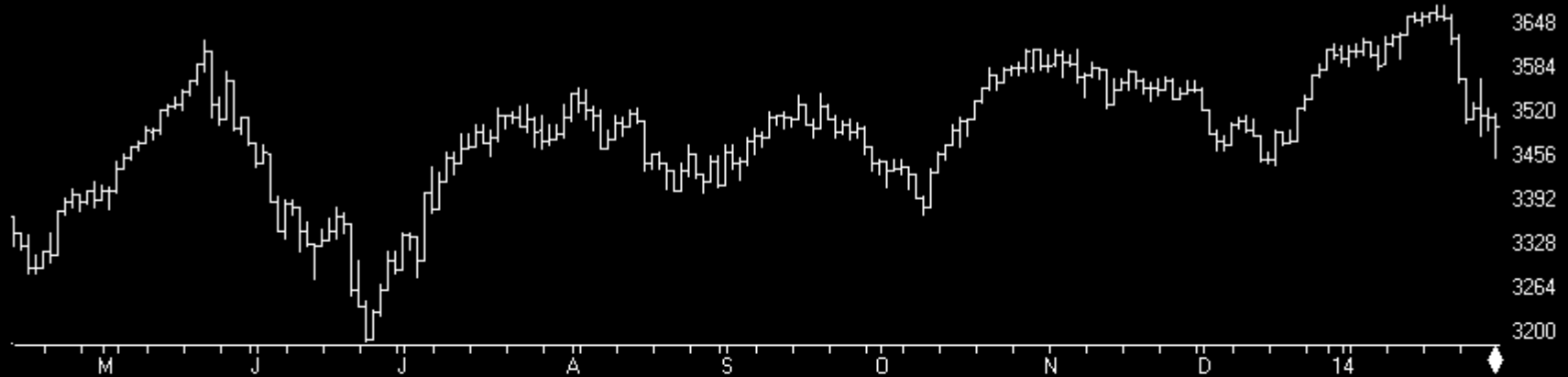
UK ALLSHARE MKT 2013 (Weekly) + Chartprofit Market Timing System (color study)



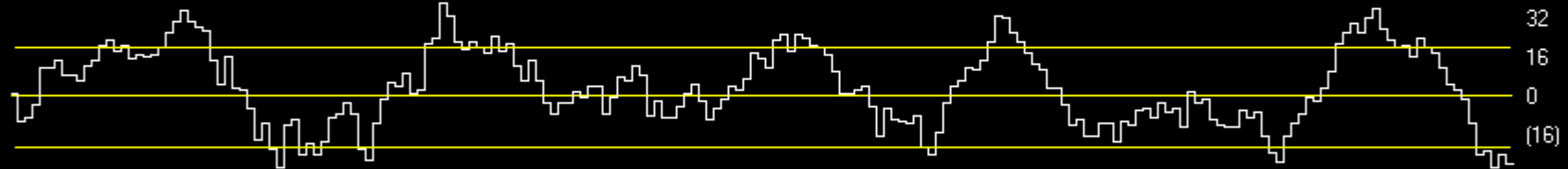
Market Charts

Charts by AIQ TradingExpert

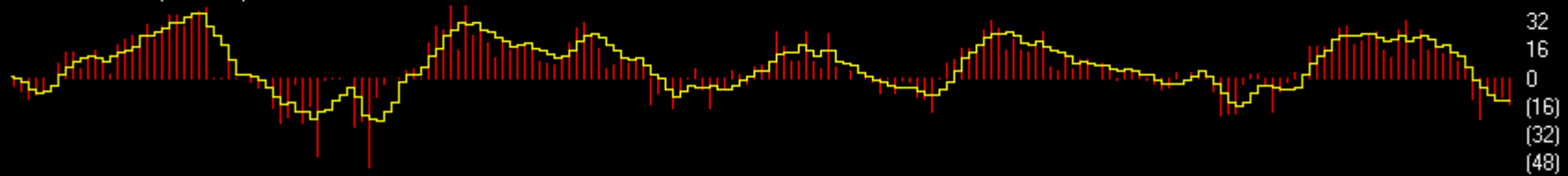
UK ALLSHARE MKT 2013 (Daily)



NetVol%10ma



UKA %NNH25 (+ 5ma)



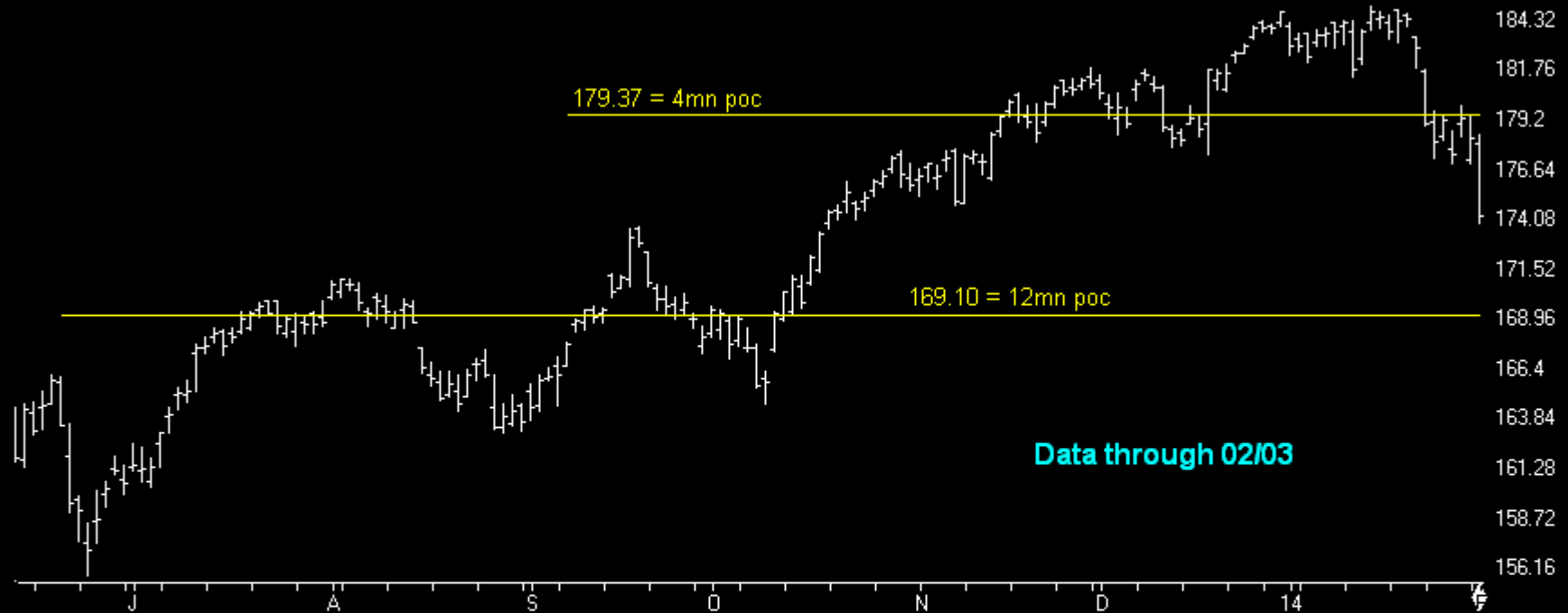
Allshare%St_50 *bullish % shows percent stocks > 50day ma*



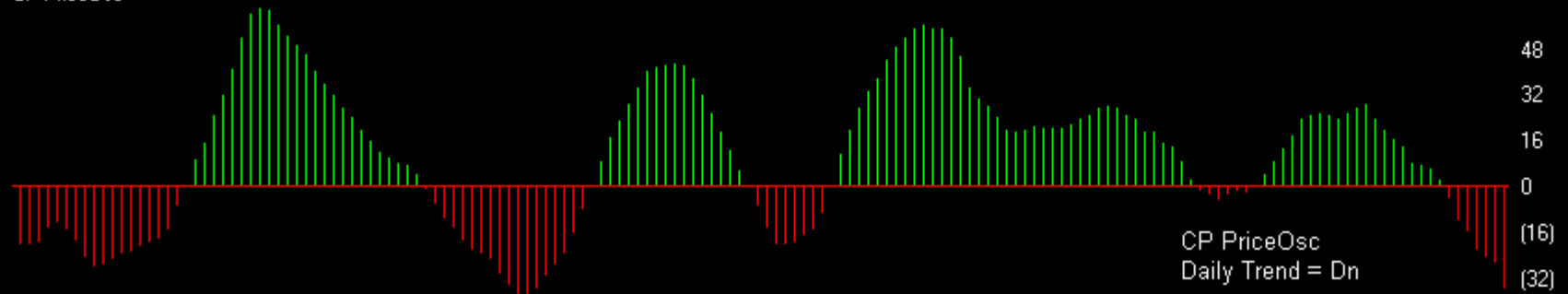
Index ETFs

Charts by AIQ TradingExpert

13 SPY SP500 ETF (Daily)

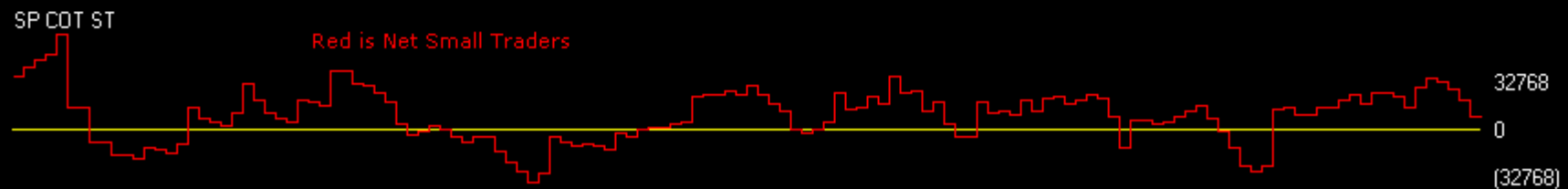
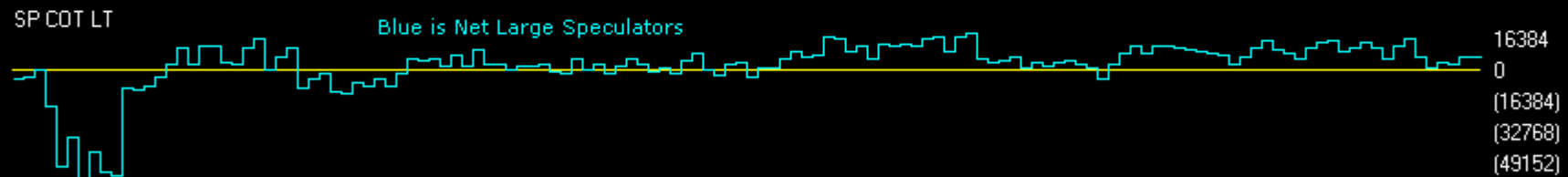
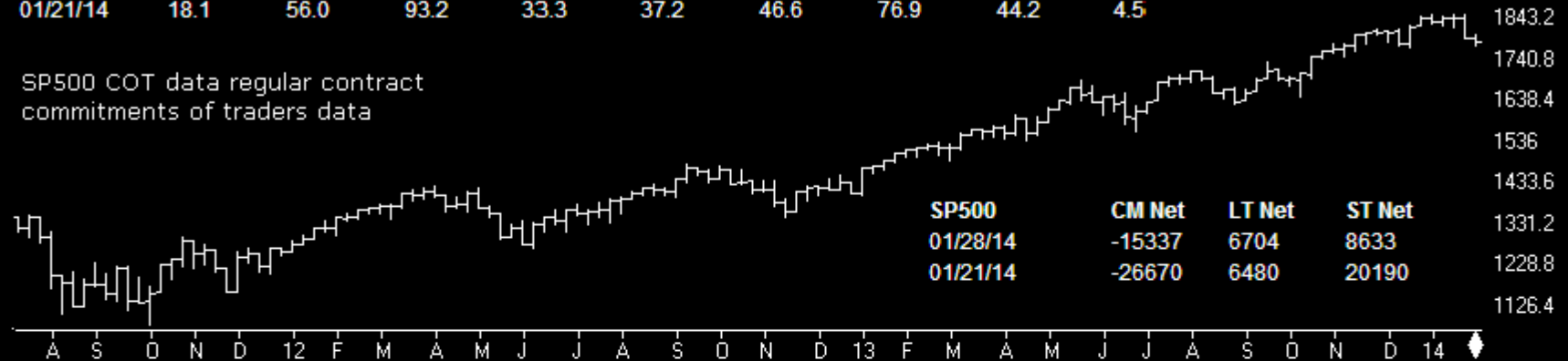


CP PriceOsc



SP500	CM Net	CM Long	CM Short	LT Net	LT Long	LT Short	ST Net	ST Long	ST Short
01/28/14	38.4	66.4	68.2	34.7	41.2	56.3	59.0	33.5	28.1
01/21/14	18.1	56.0	93.2	33.3	37.2	46.6	76.9	44.2	4.5

SP500 COT data regular contract commitments of traders data



Index ETFs

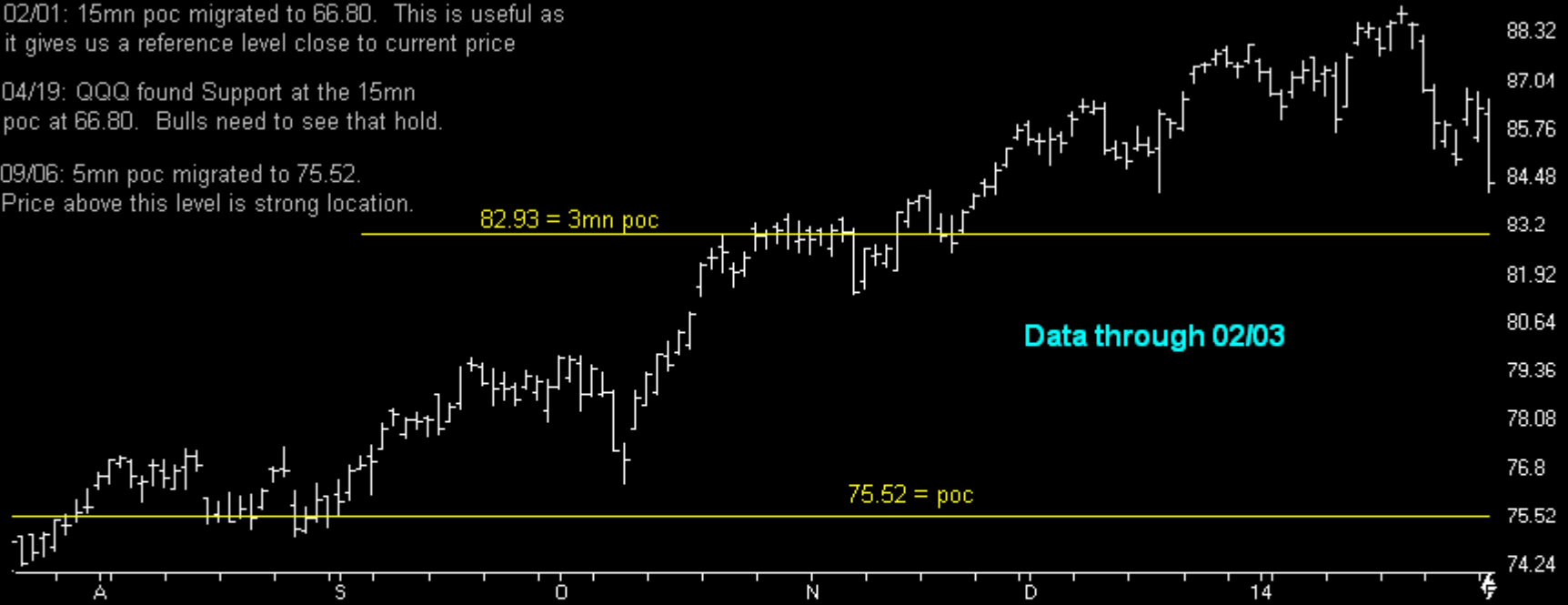
Charts by AIQ TradingExpert

12 QQQ N100 ETF (Daily)

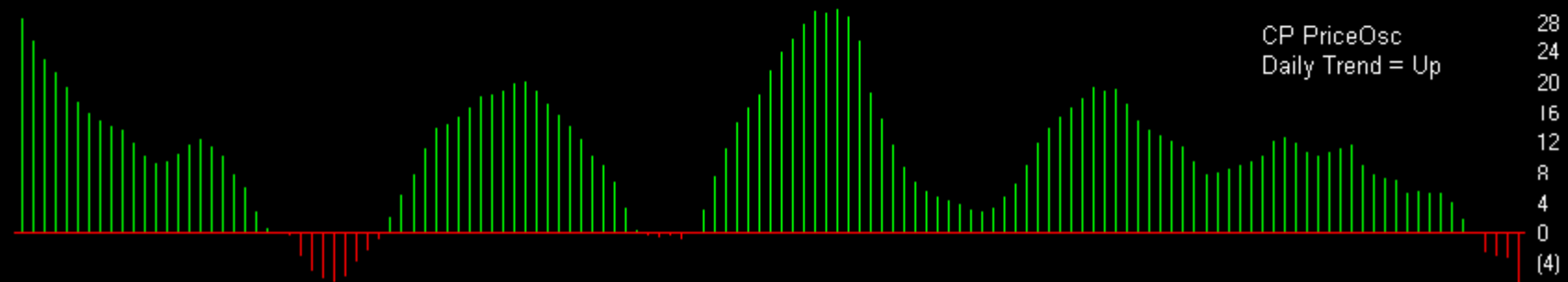
02/01: 15mn poc migrated to 66.80. This is useful as it gives us a reference level close to current price

04/19: QQQ found Support at the 15mn poc at 66.80. Bulls need to see that hold.

09/06: 5mn poc migrated to 75.52. Price above this level is strong location.



CP PriceOsc



Index ETFs

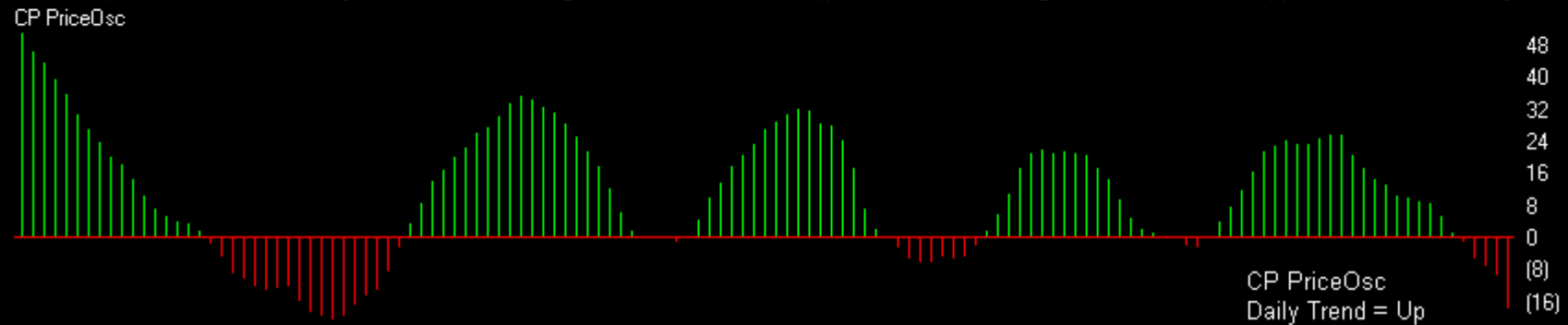
Charts by AIQ TradingExpert

11 IwM R2000 ETF (Daily)

05/03: 6mn poc migrated higher to 93.62. IWM needs to hold above this level to stay in a strong price location.

07/12: Chart broke to new highs last week. As long as price holds above the 10mn poc at 97.87 it is in a strong price location in the LT.

09/13: The three month poc migrated higher to 104.44.



Index ETFs

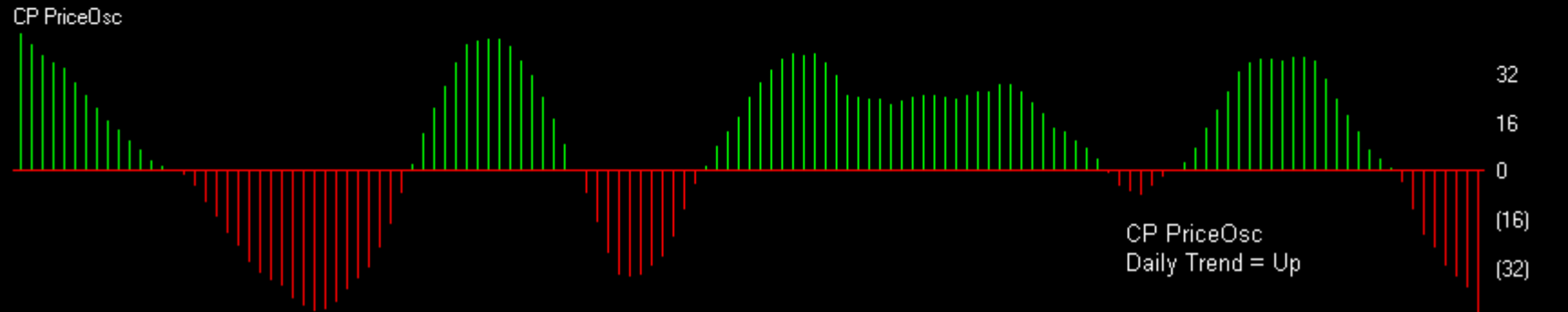
Charts by AIQ TradingExpert

10 DIA DOW ETF (Daily)

164.36 = 4mn poc

Data through 02/03

152.70 = 12mn poc

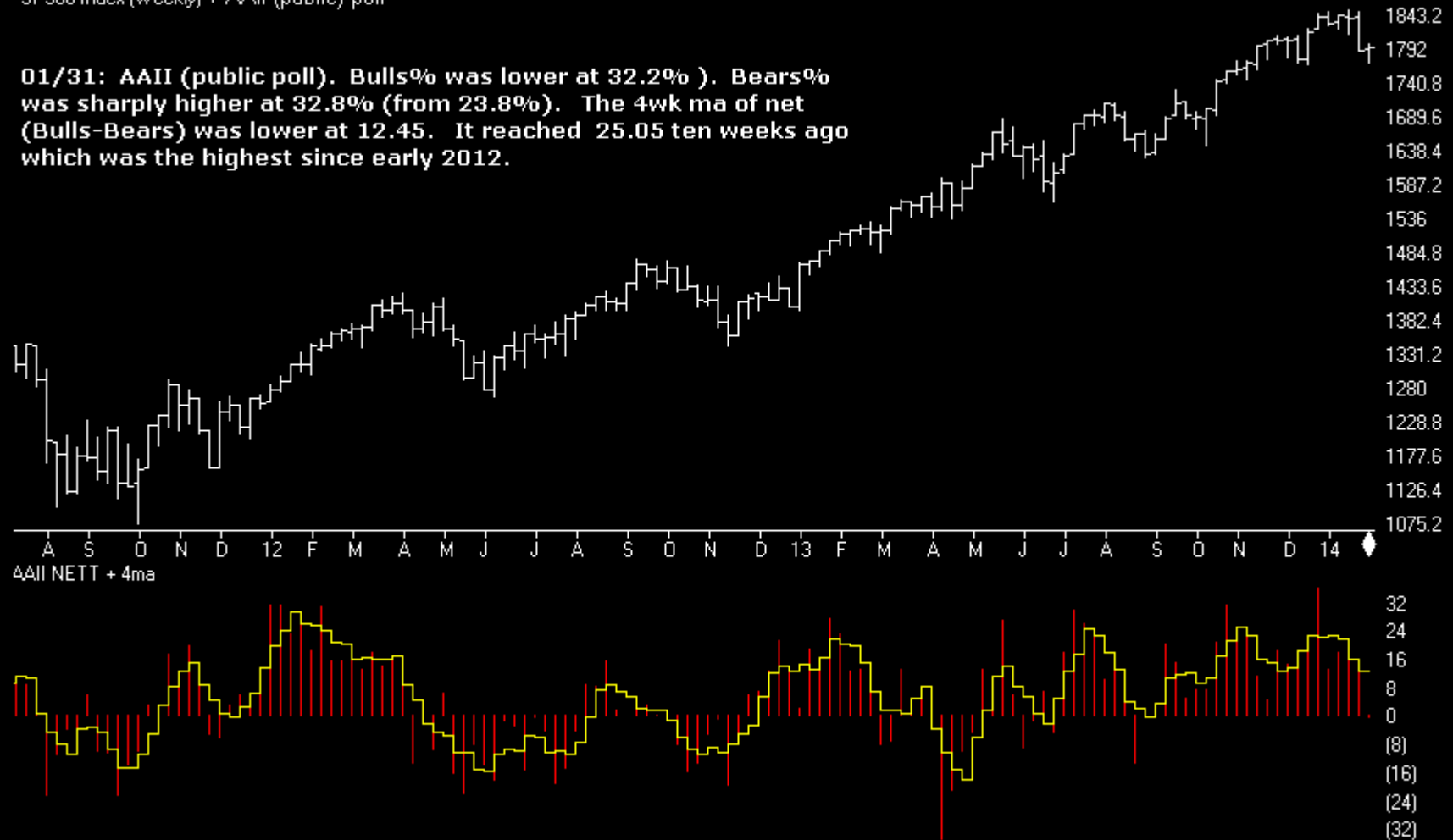


Sentiment

Charts by AIQ TradingExpert

SP500 Index (Weekly) + AAll (public) poll

01/31: AAll (public poll). Bulls% was lower at 32.2%). Bears% was sharply higher at 32.8% (from 23.8%). The 4wk ma of net (Bulls-Bears) was lower at 12.45. It reached 25.05 ten weeks ago which was the highest since early 2012.

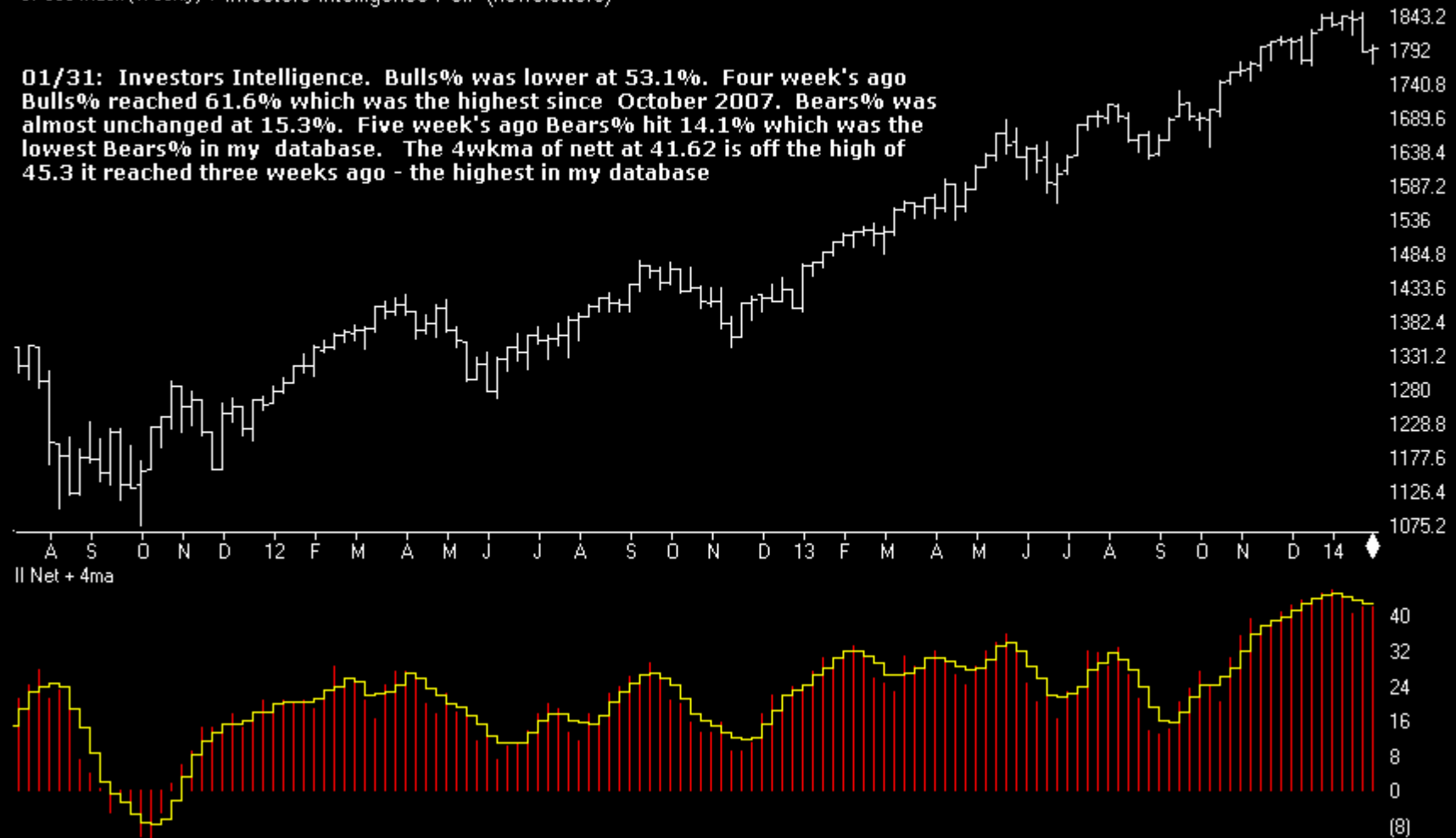


Sentiment

Charts by AIQ TradingExpert

SP500 Index (Weekly) + Investors Intelligence Poll (newsletters)

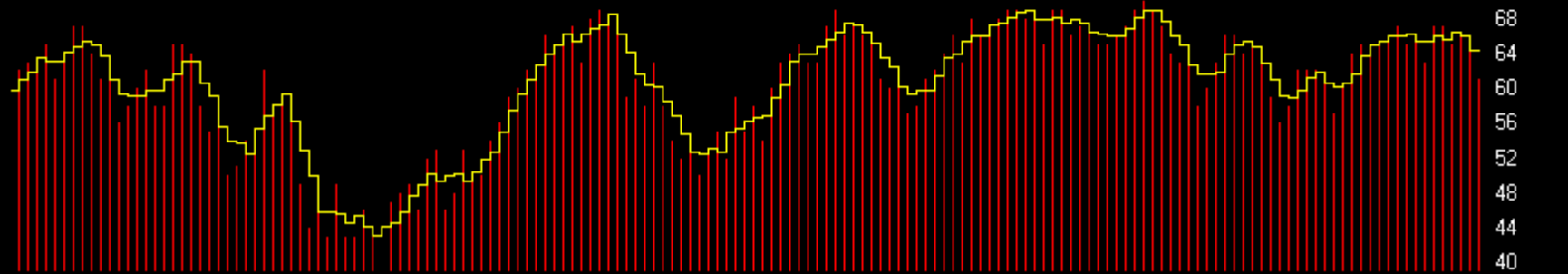
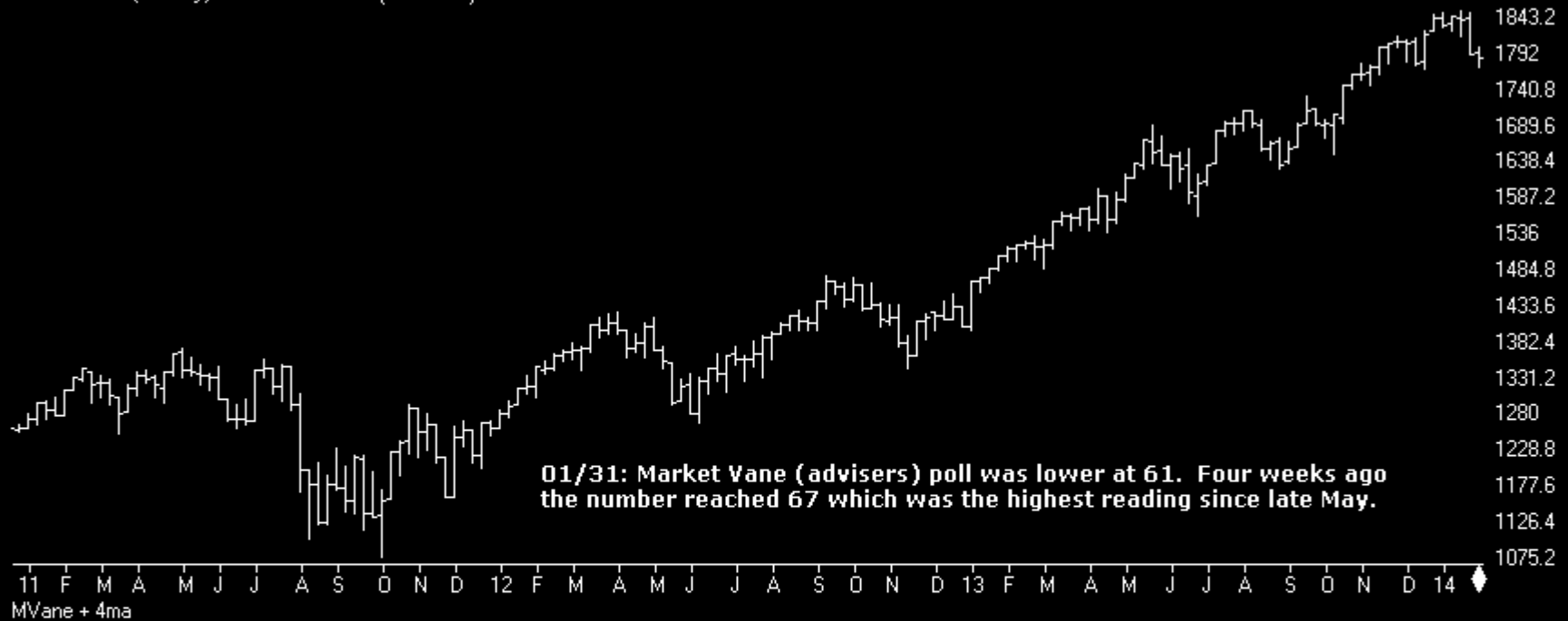
01/31: Investors Intelligence. Bulls% was lower at 53.1%. Four week's ago Bulls% reached 61.6% which was the highest since October 2007. Bears% was almost unchanged at 15.3%. Five week's ago Bears% hit 14.1% which was the lowest Bears% in my database. The 4wkma of nett at 41.62 is off the high of 45.3 it reached three weeks ago - the highest in my database



Sentiment

Charts by AIQ TradingExpert

SP500 Index (Weekly) + Market Vane (advisers)

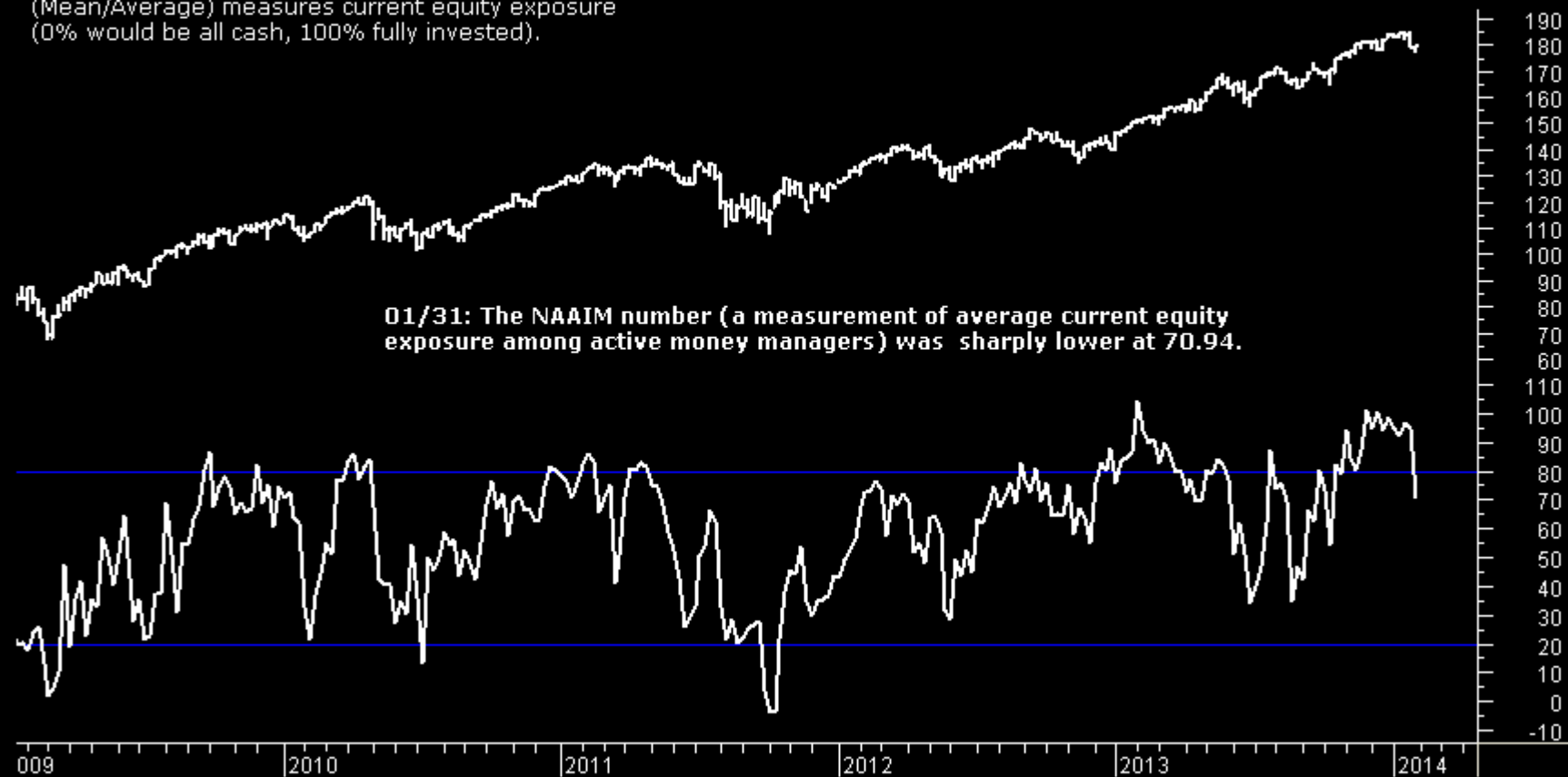


Sentiment

Charts by AIQ TradingExpert

SPY + NAAIM Number
National Association of Active Investment Managers

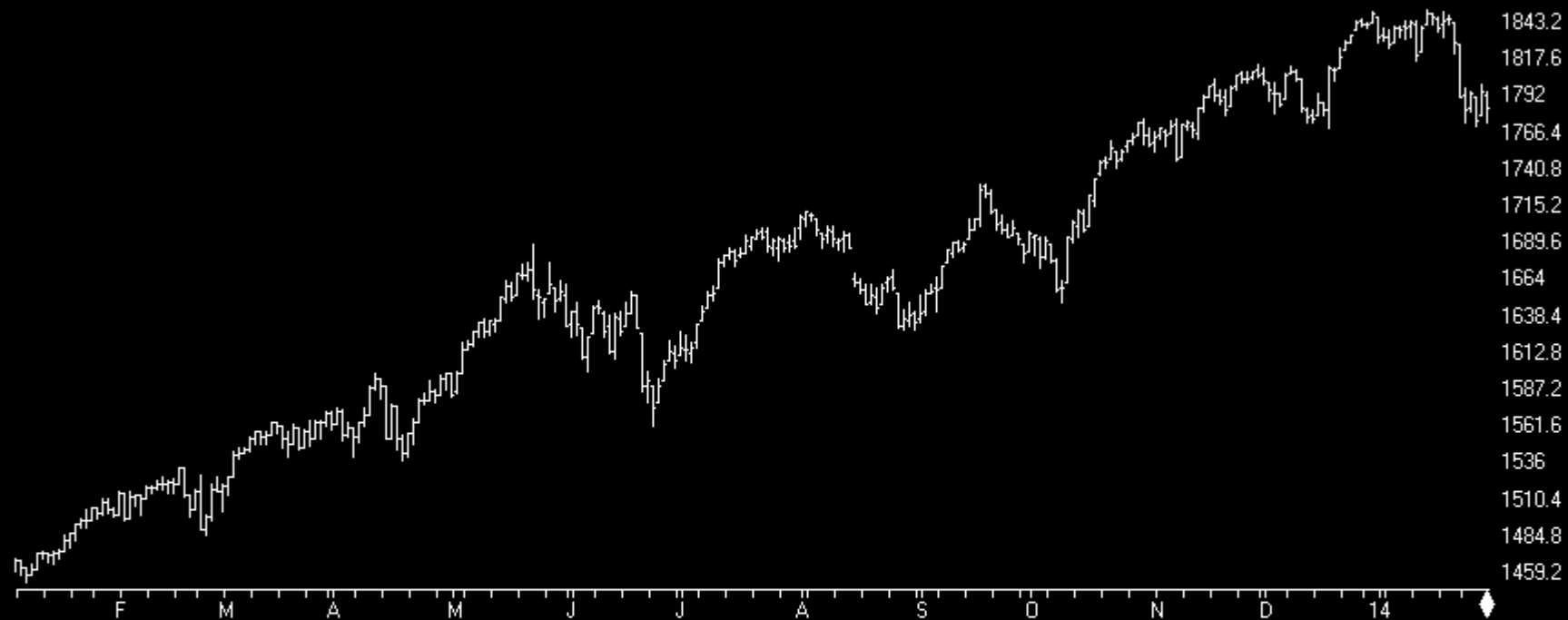
NAAIM (active money managers) number
(Mean/Average) measures current equity exposure
(0% would be all cash, 100% fully invested).



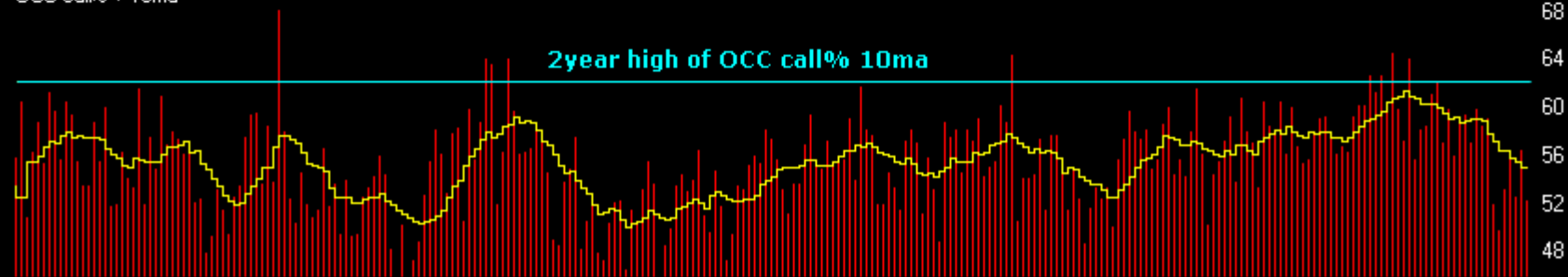
Sentiment

Charts by AIQ TradingExpert

SP500 Index (Daily) + OCC Calls% (equities only)



OCC call% + 10ma

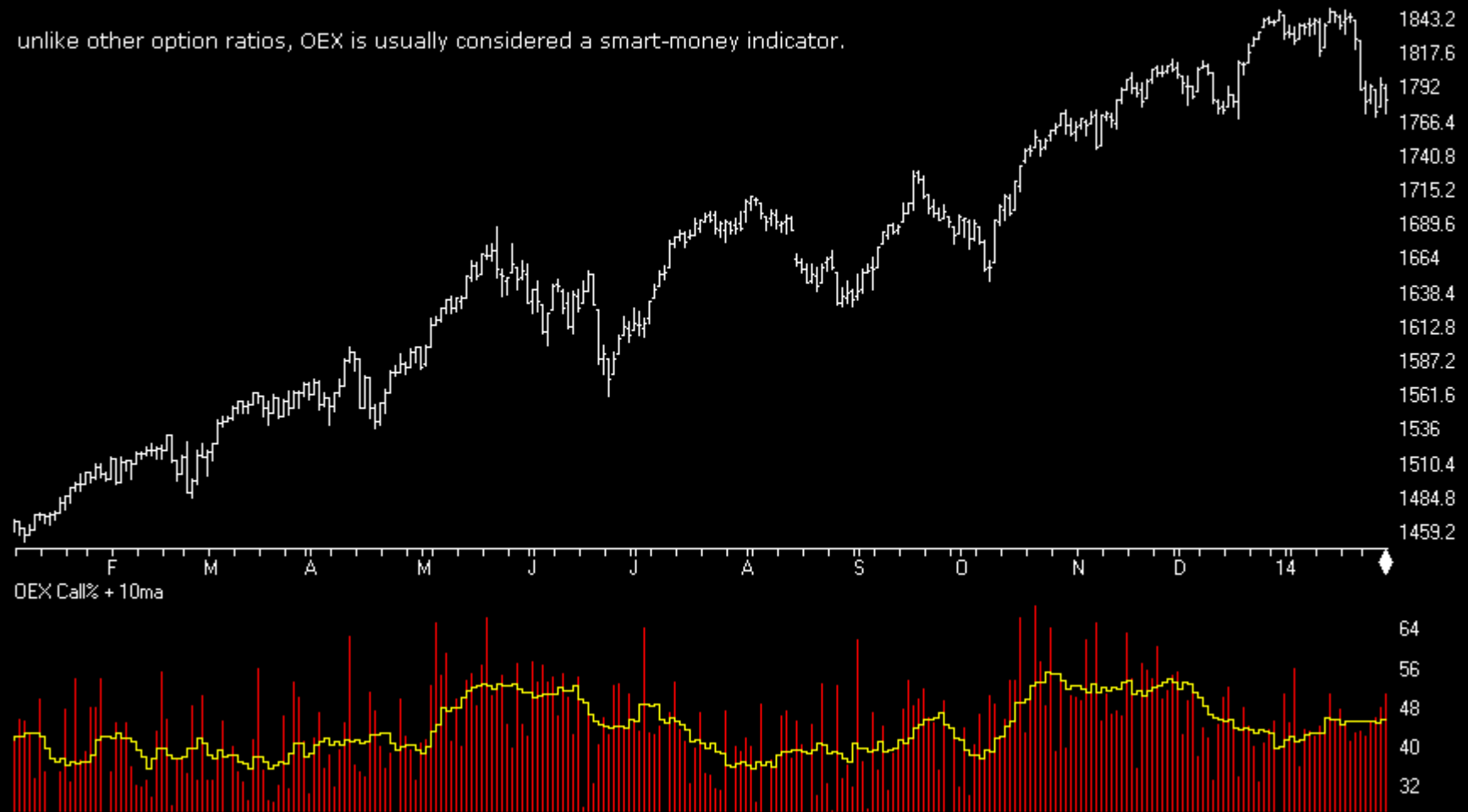


Sentiment

Charts by AIQ TradingExpert

SP500 Index (Daily) + OEX Calls%

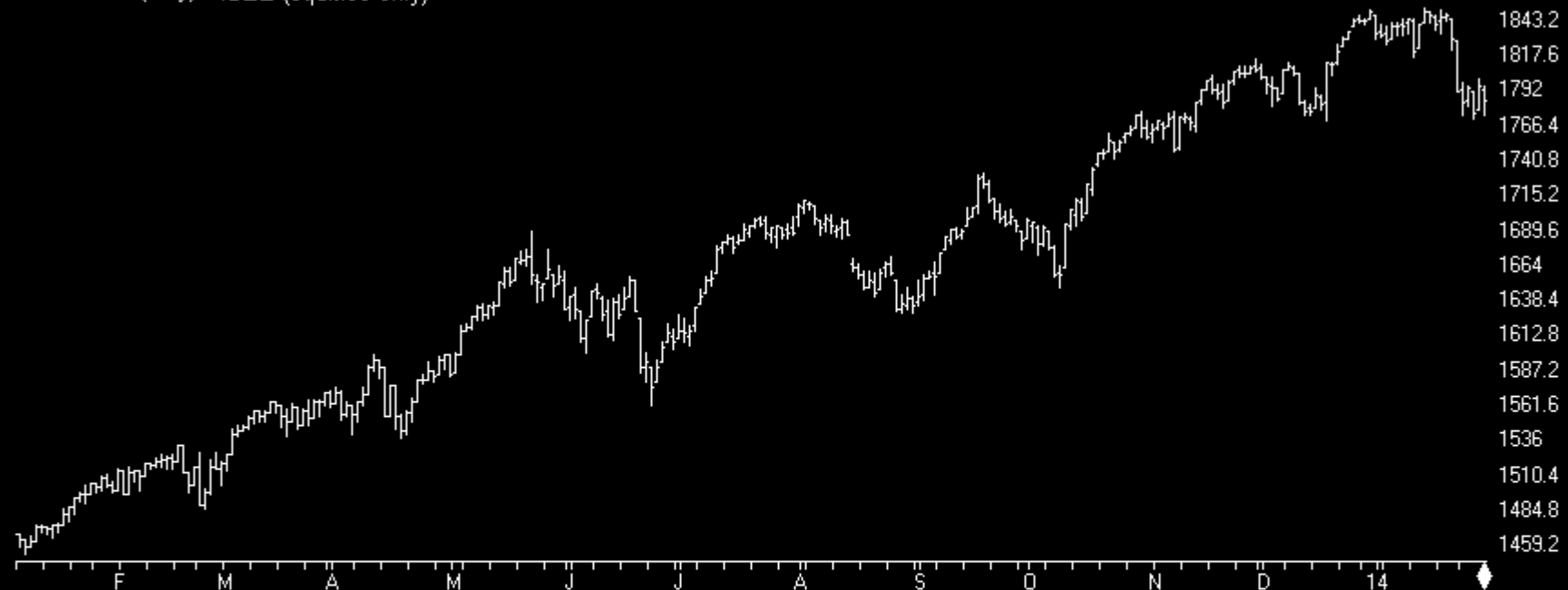
unlike other option ratios, OEX is usually considered a smart-money indicator.



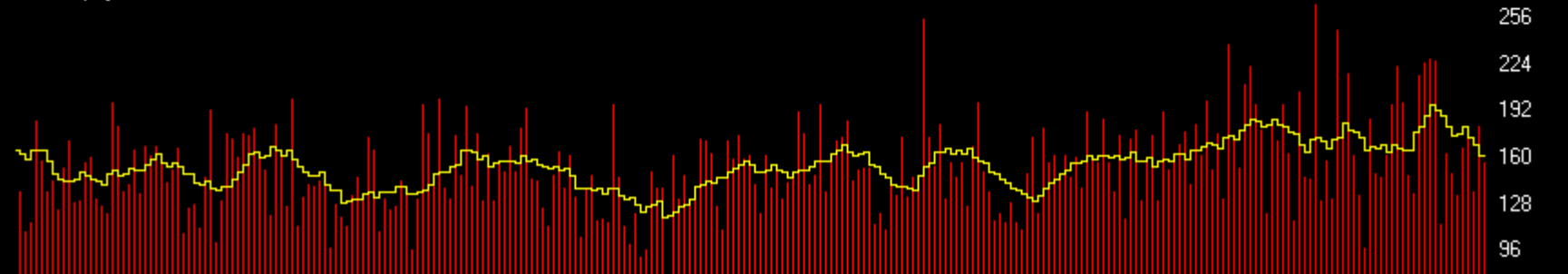
Sentiment

Charts by AIQ TradingExpert

SP500 Index (Daily) + ISEE (equities only)



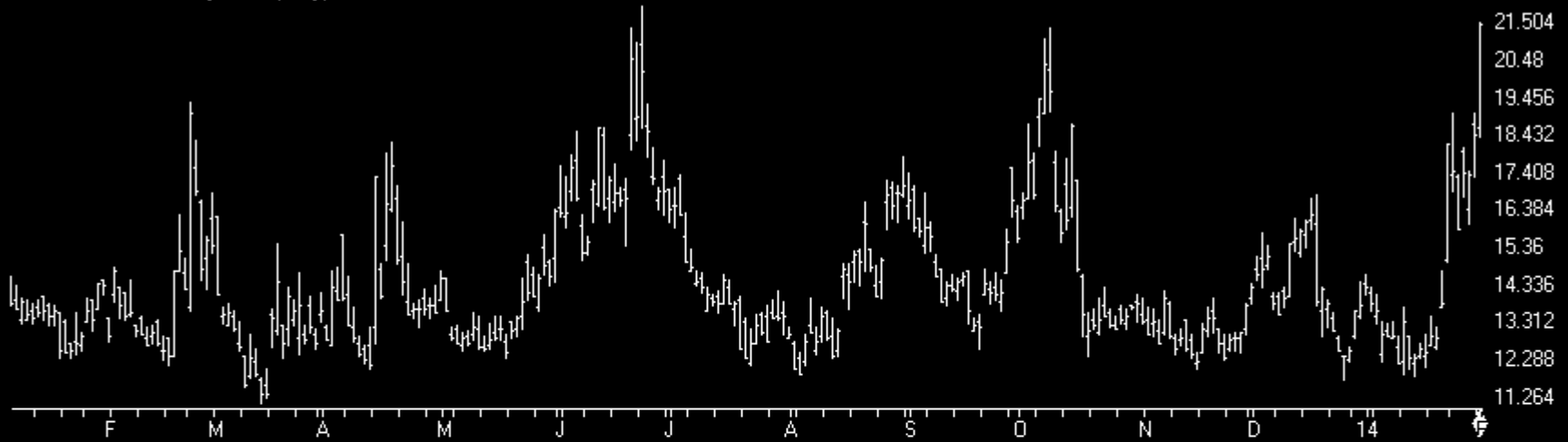
ISEE Equity+10ma



Sentiment

Charts by AIQ TradingExpert

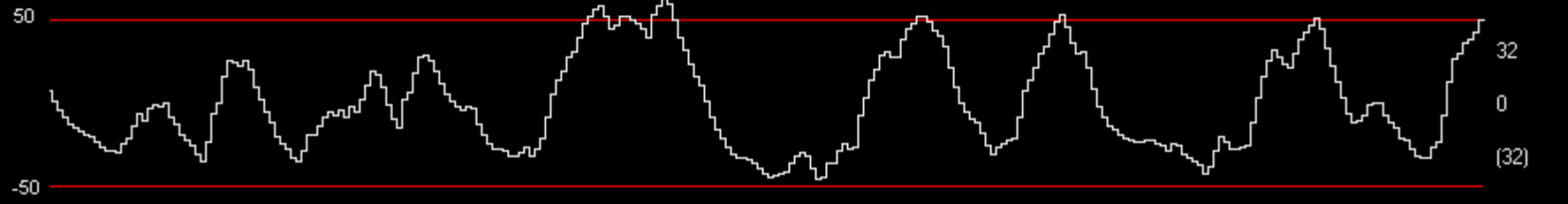
VIX - S&P 500 Volatility Index (Daily)



SPX



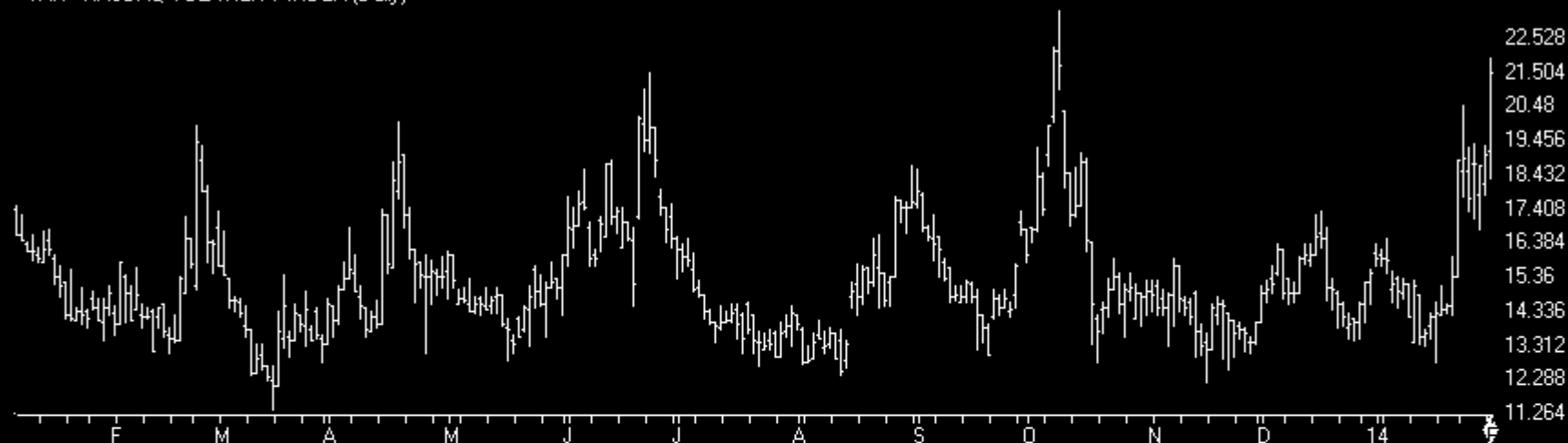
TCI



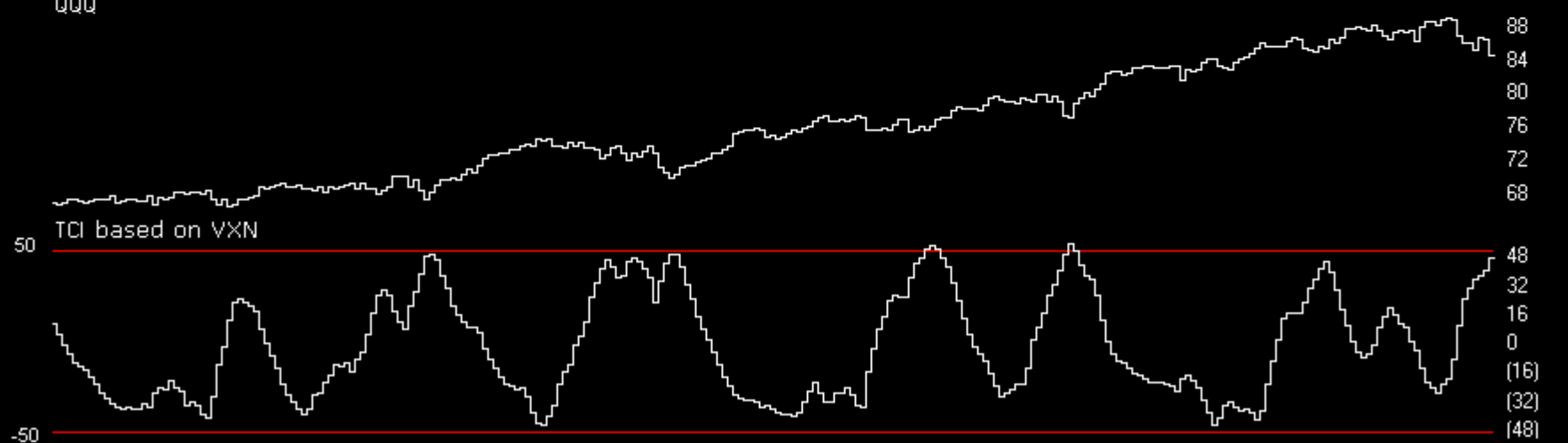
Sentiment

Charts by AIQ TradingExpert

VXN - NASDAQ VOLATILITY INDEX (Daily)



000

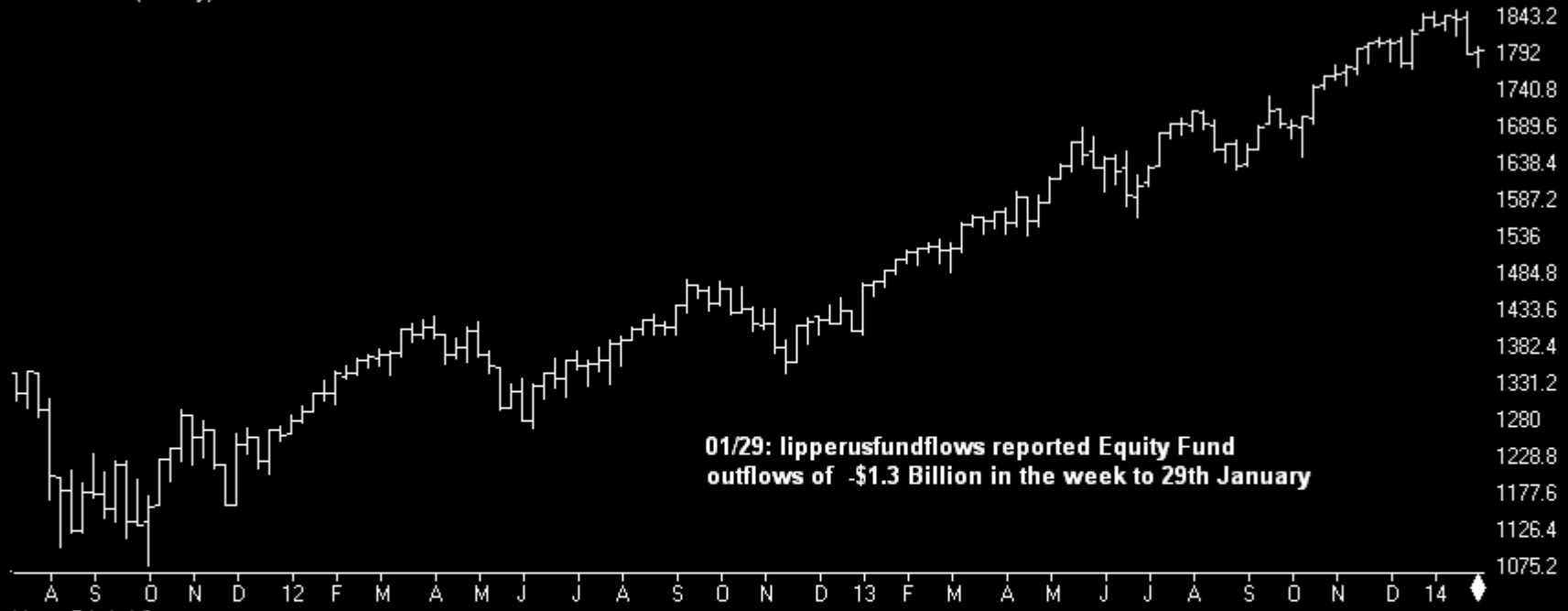


TCI based on VXN

Sentiment

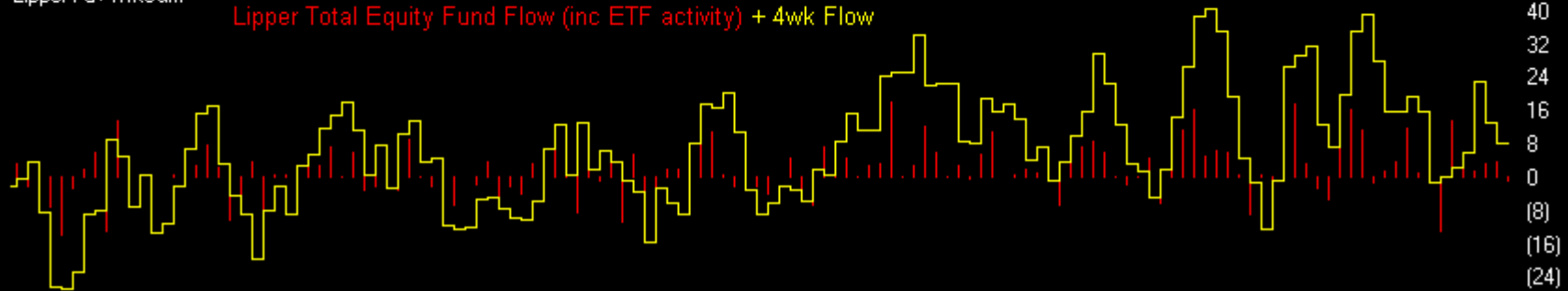
Charts by AIQ TradingExpert

SP500 Index (Weekly)



Lipper Fd+4wkSum

Lipper Total Equity Fund Flow (inc ETF activity) + 4wk Flow

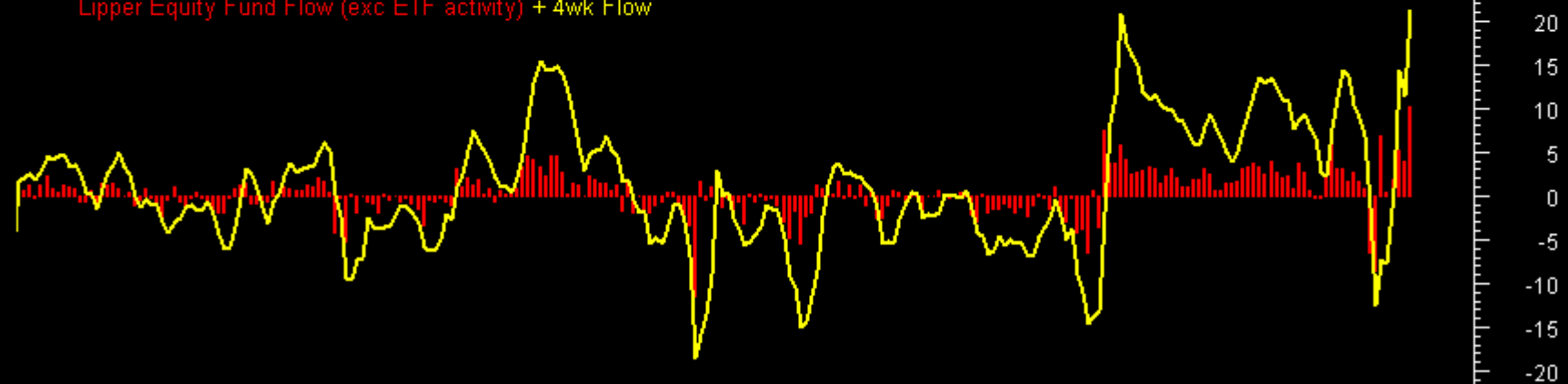


Sentiment

LIPPER Equity Fds (exc ETF) net flow (\$billion)



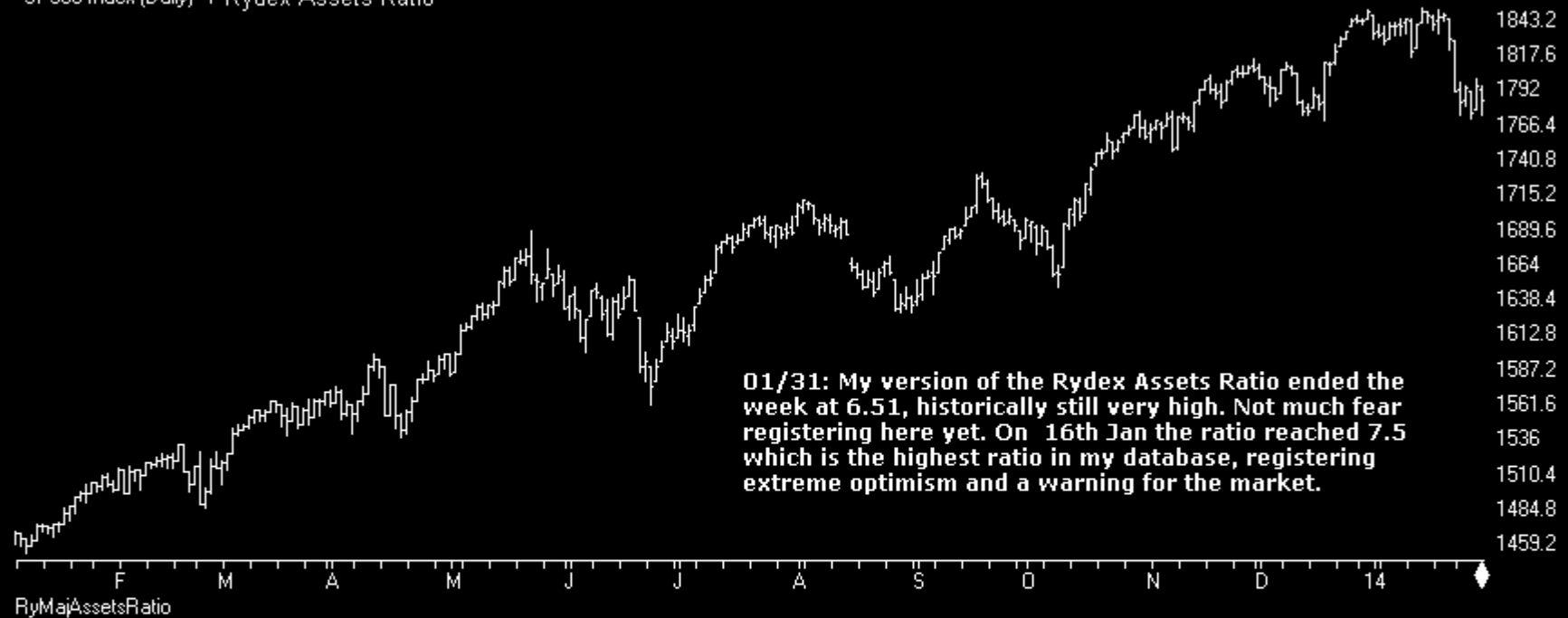
Lipper Equity Fund Flow (exc ETF activity) + 4wk Flow



A M J J A S O N | 2010 | A M J A S O N | 2011 | A M J A S O | D | 2012 | A M J A S O | D | 2013 | A M J J A S O | D | 2014 | A

Sentiment

SP500 Index (Daily) + Rydex Assets Ratio



Bonds

Charts by AIQ TradingExpert

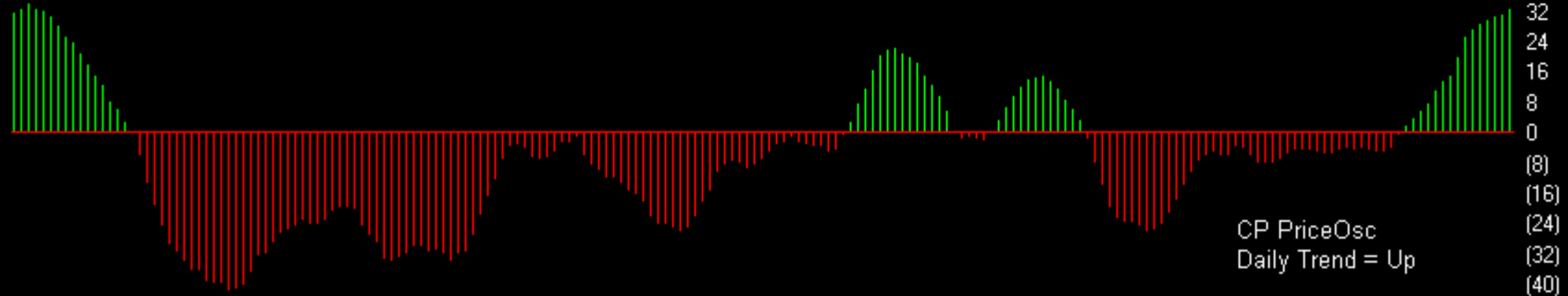
30 Lehman 20+ Year T Bond ETF (Daily)

06/07: In a weak price location below 117.15, the major poc. On Tuesday chart printed its lowest level since April 2012.

12/20: 10mn poc migrated down to 102.85



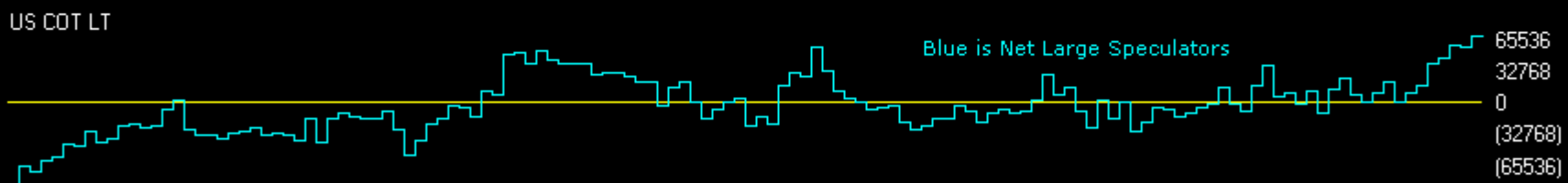
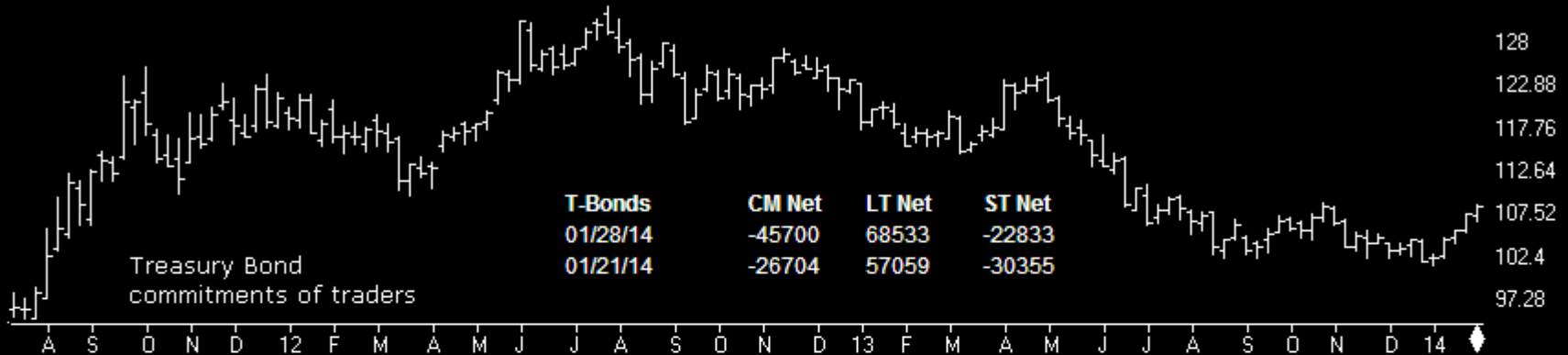
CP PriceOsc



Bonds

Charts by AIQ TradingExpert

T-BONDS	CM Net	CM Long	CM Short	LT Net	LT Long	LT Short	ST Net	ST Long	ST Short
01/28/14	0.0	10.9	100.0	100.0	91.0	32.2	89.1	51.1	0.0
01/21/14	1.3	0.0	83.3	97.4	100.0	71.3	74.8	60.2	1.0



Gold

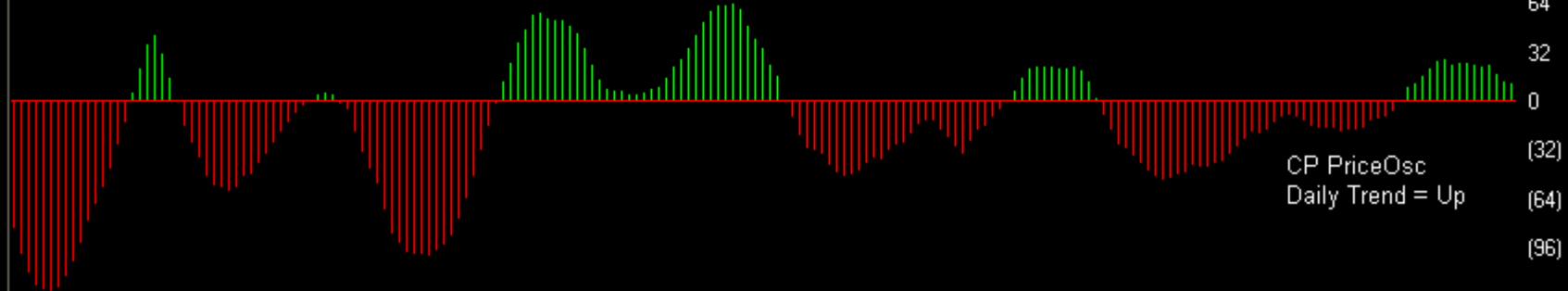
Charts by AIQ TradingExpert

STREETTRACKS GOLD TRUST ETF (Daily) (GLD)

10/11: Printed a 3month low last week and remains below 134.17, the 12mn poc, in a weak price location.



CP PriceOsc

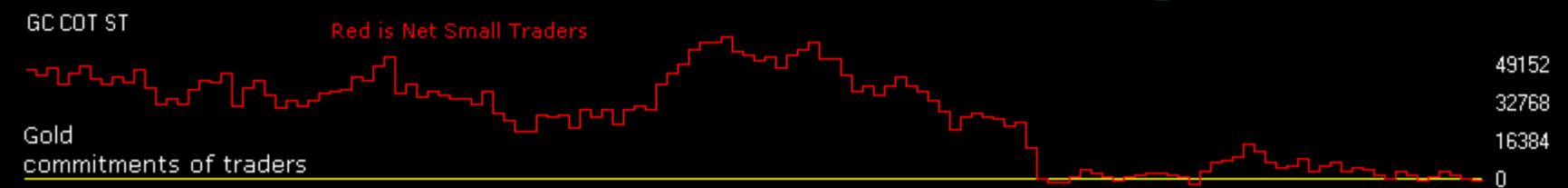
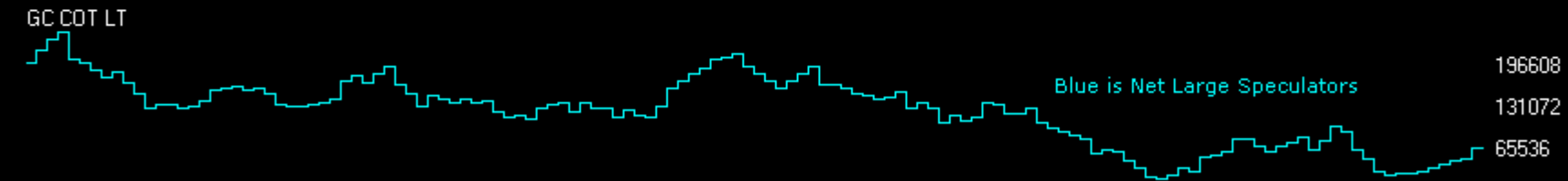
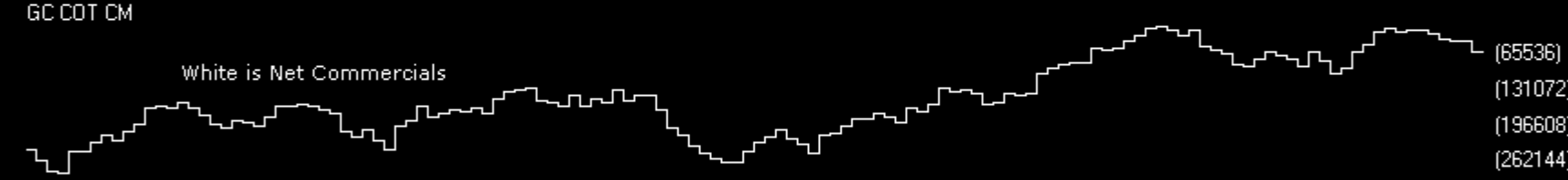
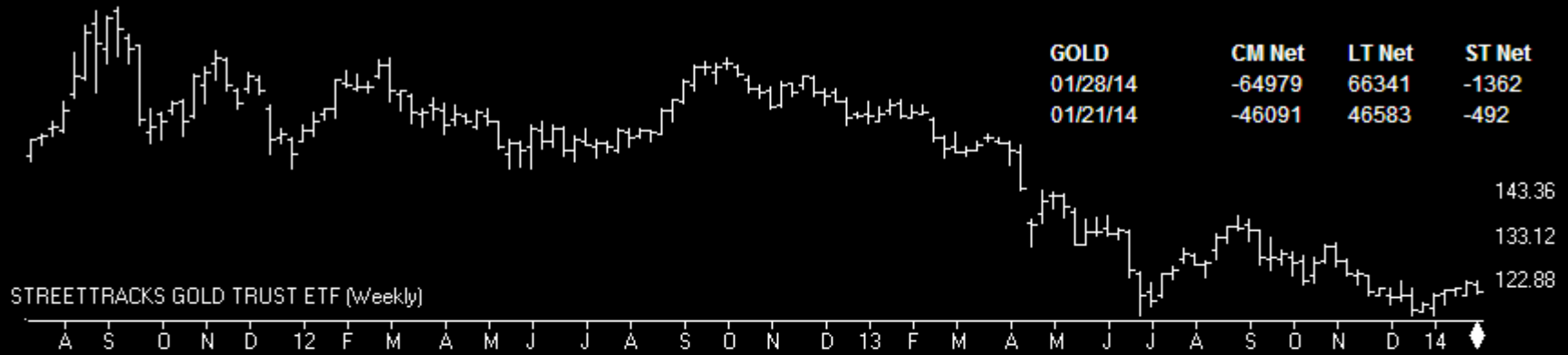


Gold

Charts by AIQ TradingExpert

GOLD	CM Net	CM Long	CM Short	LT Net	LT Long	LT Short	ST Net	ST Long	ST Short
01/28/14	49.5	21.7	45.9	56.3	93.3	53.7	0	0	73
01/21/14	71.8	77.8	27.8	30.8	29.4	68.8	2.2	0	70.9

GOLD	CM Net	LT Net	ST Net
01/28/14	-64979	66341	-1362
01/21/14	-46091	46583	-492



Gold commitments of traders

oil

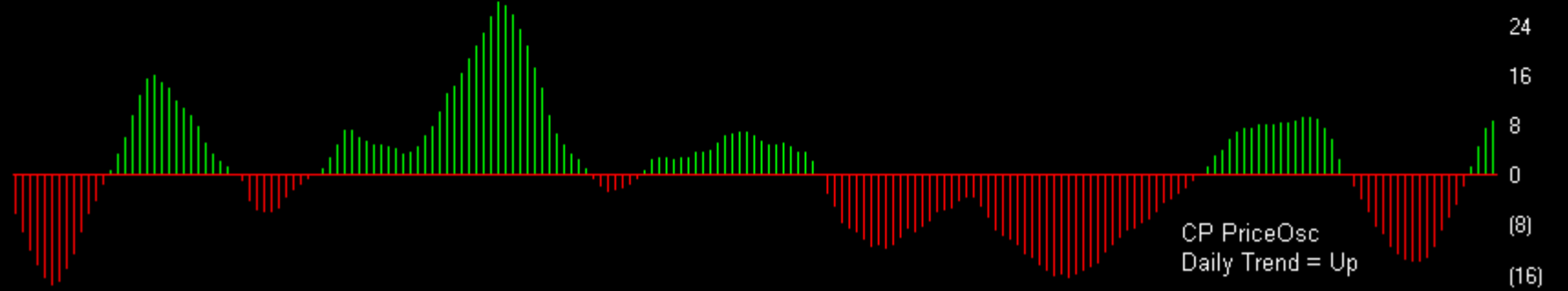
Charts by AIQ TradingExpert

43 UNITED STATES OIL FUND (Daily) (USO)

07/17/13 38.04



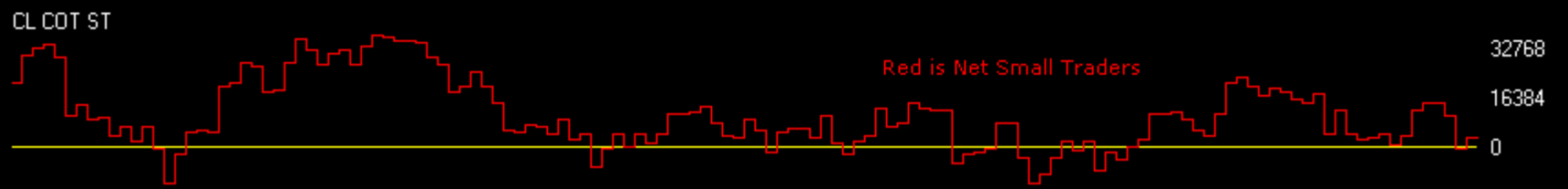
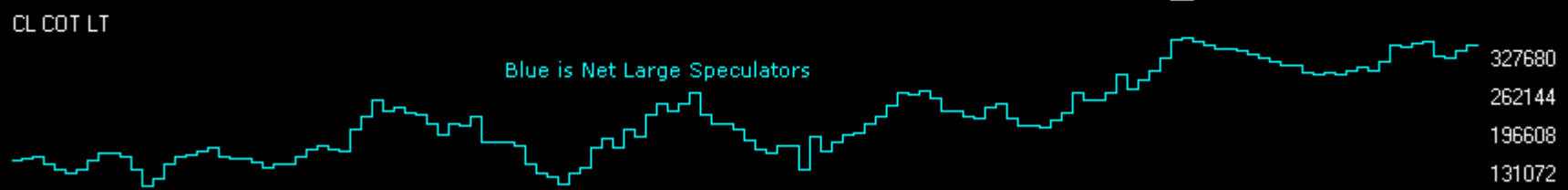
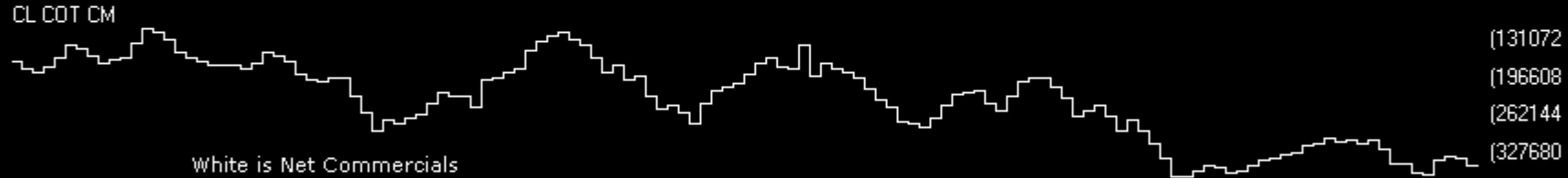
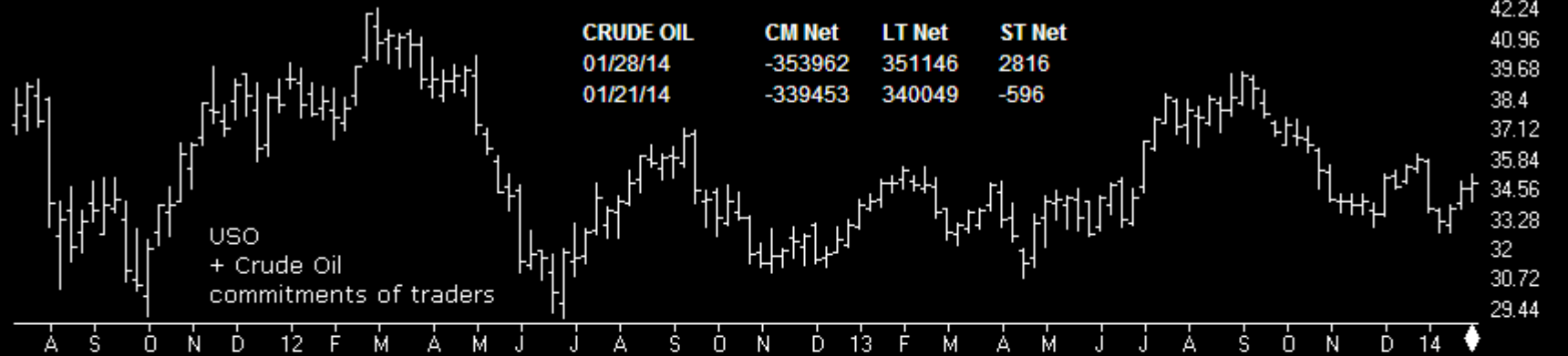
CP PriceOsc



Oil

Charts by AIQ TradingExpert

CRUDE OIL	CM Net	CM Long	CM Short	LT Net	LT Long	LT Short	ST Net	ST Long	ST Short
01/28/14	29.0	0.0	49.8	81.5	100.0	63.2	14.4	76.0	100.0
01/21/14	52.7	6.9	31.8	64.1	100.0	89.7	0.0	37.1	100.0

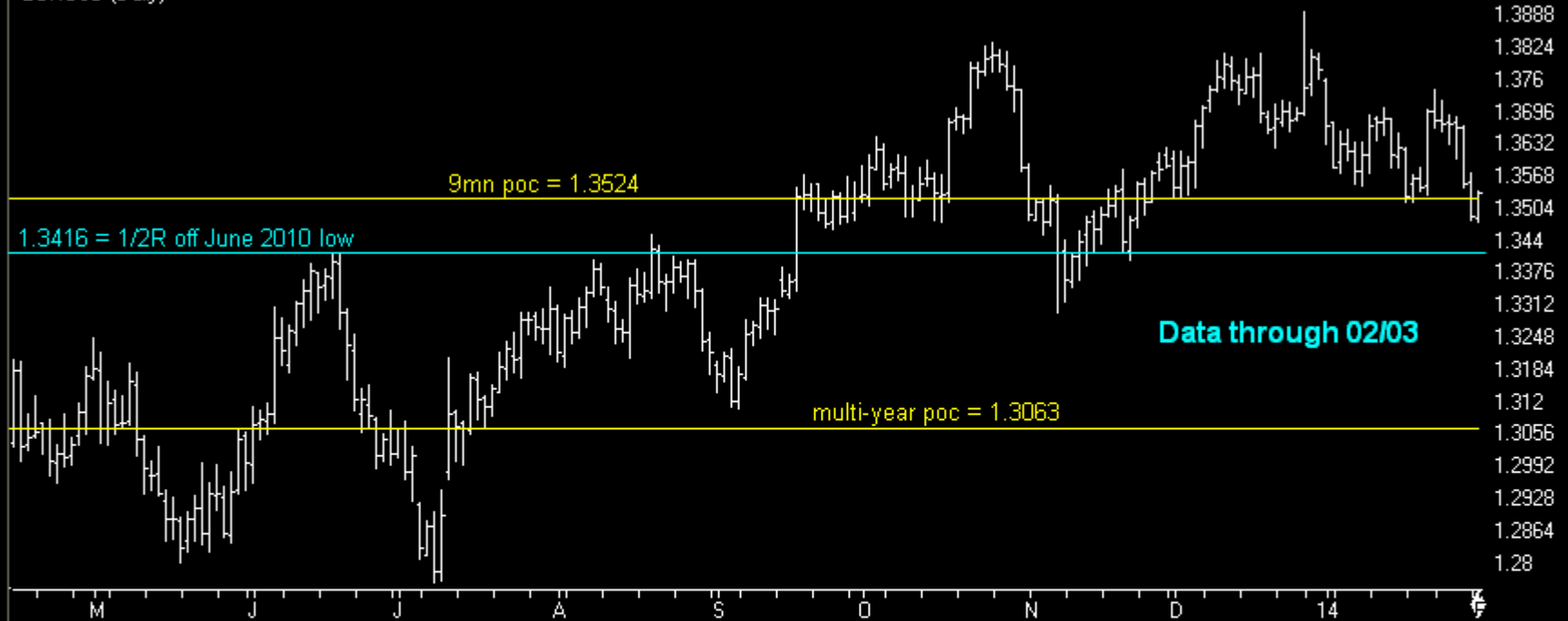


Dollar

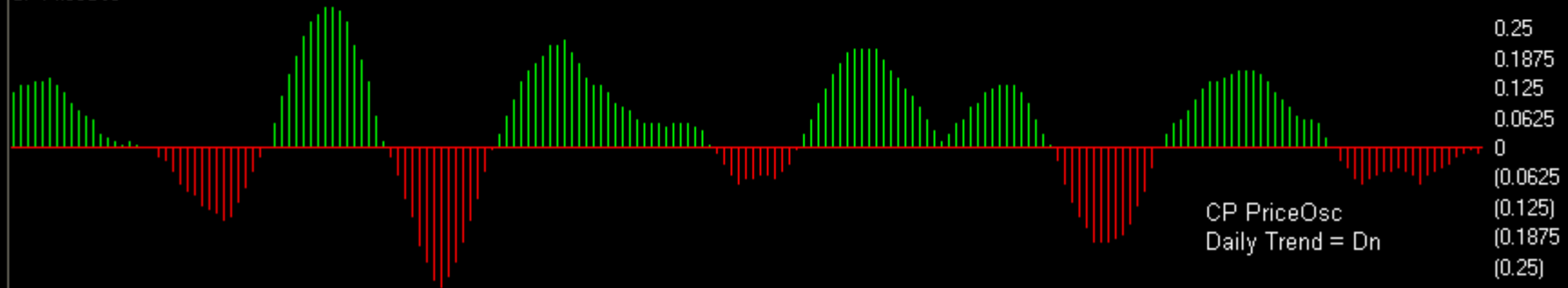
Charts by AIQ TradingExpert

EURUSD (Daily)

04/22/13 1.3773



CP PriceOsc



Dollar

Charts by AIQ TradingExpert

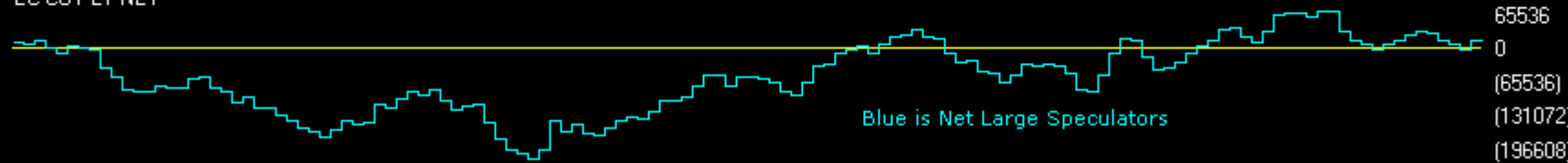
EURUSD	CM Net	CM Long	CM Short	LT Net	LT Long	LT Short	ST Net	ST Long	ST Short
01/28/14	74.8	88.1	42.7	23.8	14.5	45.4	26.8	5.1	62.8
01/21/14	100.0	100.0	20.7	5.8	3.5	61.9	0.0	0.0	100.0



EC COT CM NET



EC COT LT NET



EC COT ST



EURUSD (Weekly)
commitments of traders

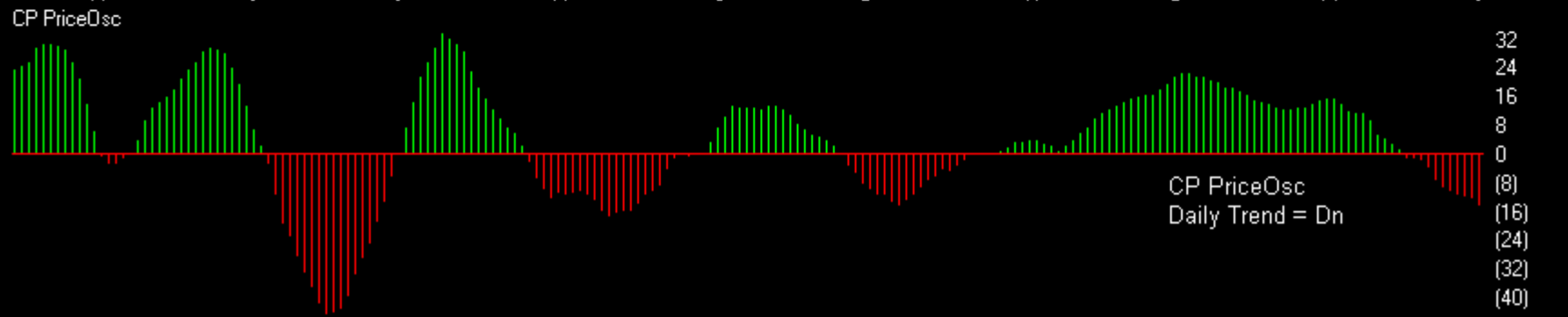
Dollar

Charts by AIQ TradingExpert

53 USDJPY (Daily)



104.96
104.32
103.68
103.04
102.4
101.76
101.12
100.48
99.84
99.2
98.56
97.92
97.28
96.64
96
95.36
94.72
94.08



32
24
16
8
0
(8)
(16)
(24)
(32)
(40)

CP PriceOsc
Daily Trend = Dn

Dollar

Charts by AIQ TradingExpert

JPYUSD	CM Net	CM Long	CM Short	LT Net	LT Long	LT Short	ST Net	ST Long	ST Short
01/28/14	27.3	63.2	100.0	66.5	24.4	0.0	68.8	44.1	4.3
01/21/14	62.0	85.2	81.5	33.3	9.2	51.0	48.4	26.5	6.8

JPYUSD	CM Net	LT Net	ST Net
01/28/14	113689	-86192	-27497
01/21/14	147772	-114961	-32811

Japanese Yen Nearest Futures (Weekly) commitments of traders

JY COT CM

White is Net Commercials

JY COT LT

Blue is Net Large Speculators

JY COT ST

Red is Net Small Traders

112.64
107.52
102.4
97.28

131072
65536
0

0
(65536)
(131072)

0
(16384)
(32768)
(49152)

A S O N D 12 F M A M J J A S O N D 13 F M A M J J A S O N D 14

Dollar

Charts by AIQ TradingExpert

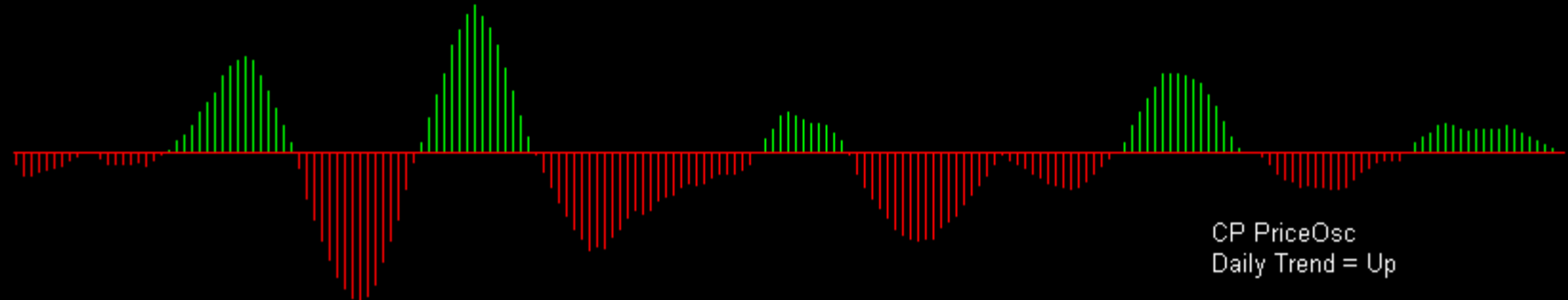
US DOLLAR INDEX (Daily)

12/06: Chart needs to hold above 80.15 to maintain strong price location.



84.8
84.48
84.16
83.84
83.52
83.2
82.88
82.56
82.24
81.92
81.6
81.28
80.96
80.64
80.32
80
79.68
79.36
79.04

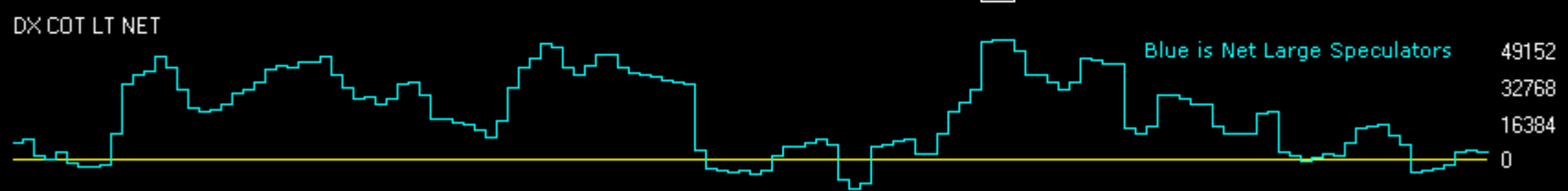
CP PriceOsc



Dollar

Charts by AIQ TradingExpert

USD IX	CM Net	CM Long	CM Short	LT Net	LT Long	LT Short	ST Net	ST Long	ST Short
01/28/14	62.1	45.1	48.1	31.7	43.9	56.0	67.8	87.3	41.2
01/21/14	59.5	55.6	52.4	32.5	30.6	51.7	91.1	92.2	3.5



<http://www.chartprofitwebcast.com>