

Charts to Friday 14th February 2014

Chart Profit eBook

Market Charts, Major ETFs

Market Sentiment Analysis



www.aiqsystems.com

www.chartprofitwebcast.com

terms of service

Stock Market Summary

***** PRICE PERFORMANCE / LOCATION

Friday closed above Mon-Wed Hi-Lo Range indicating Buyers Active for the second week on this timeframe.

ES Analysis: On Monday last week the six month poc migrated to 1792 followed by four Value Areas printed entirely above this level which is a bullish pattern. As long as ES holds above 1792 it is in a strong price location. I have marked Significant Buying (green) seven times in the last eight days, and no Significant Selling.

Stock Index ETFs: Last week Smallcaps (IWM) was the best performer of the four Stock Index ETFs which is usually a healthy sign. All four charts now print above their 1/2R off the recent high in a stronger price location with Momentum heading up.

***** BREADTH

Breadth: CP Market Timing System turned positive from negative for NYSE, turned neutral from negative for Nasdaq, R2000 and UK.

Stocks>50dyma numbers: Nyse 58%, Nasdaq 53%, R2000 49%, UK 70%. Numbers >50 are considered supportive.

***** SENTIMENT

Consensus Polls:

02/14: AAll (public poll). Bulls% was higher at 40.1% (up from 27.9%). Bears% was lower at 27.3% 36.4%. The 4wk ma of net (Bulls-Bears) was lower at 4.50, the lowest since September.

02/14: Investors Intelligence. Bulls% was lower again at 41.8%. Six week's ago Bulls% reached 61.6% which was the highest since October 2007. Bears% was unchanged at 17.4%. Seven week's ago Bears% hit 14.1% which was the lowest Bears% in my database. The 4wkma of nett at 33.3 is off the high of 45.3 it reached five weeks ago - the highest in my database

02/14: Market Vane (advisers) poll was higher at 63.

02/14: The NAAIM number (a measurement of average current equity exposure among active money managers) was higher at 73.26 (from 50.97).

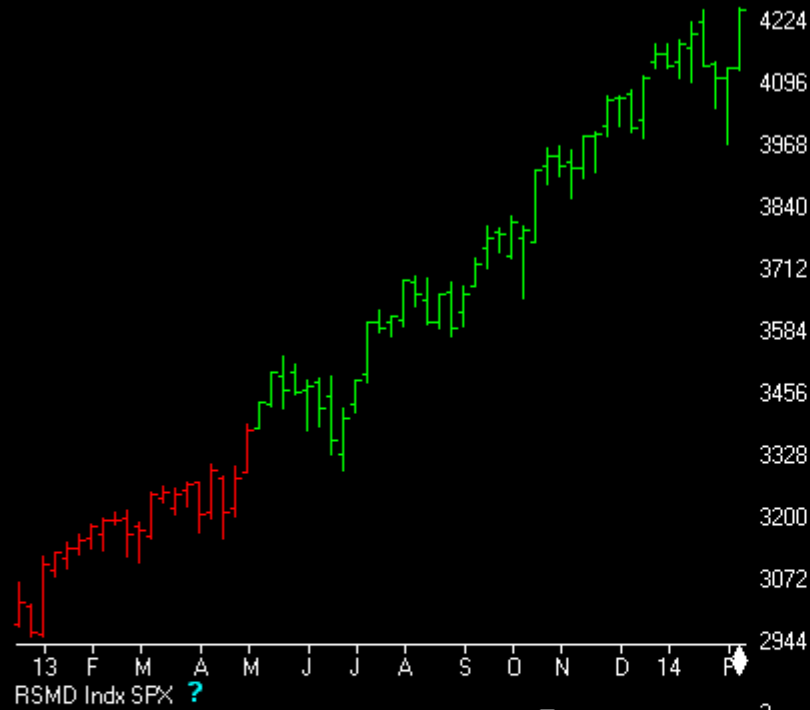
Mutual Fund Flow:

02/14: My version of the Rydex Assets Ratio ended the week at 6.45. The recent high was 7.5 on 16th Jan which was the highest ratio in my database.

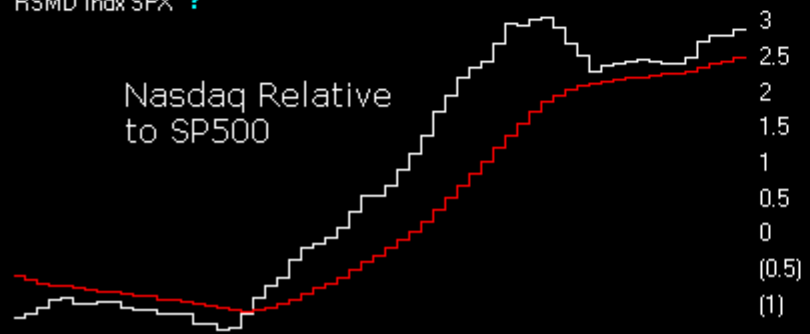
02/14: lipperusfundflows reported Equity Fund inflows of \$6.9 Billion in the week to 12th Feb. Previous week's outflow of -\$20.9 Billion was the largest single weekly outflow in my database.

02/14: lipperusfundflows ex ETFs reported Equity Fund inflows of \$3.3 Billion in the week to 12th Feb

NASDAQ COMPOSITE (Weekly)



Nasdaq Relative to SP500



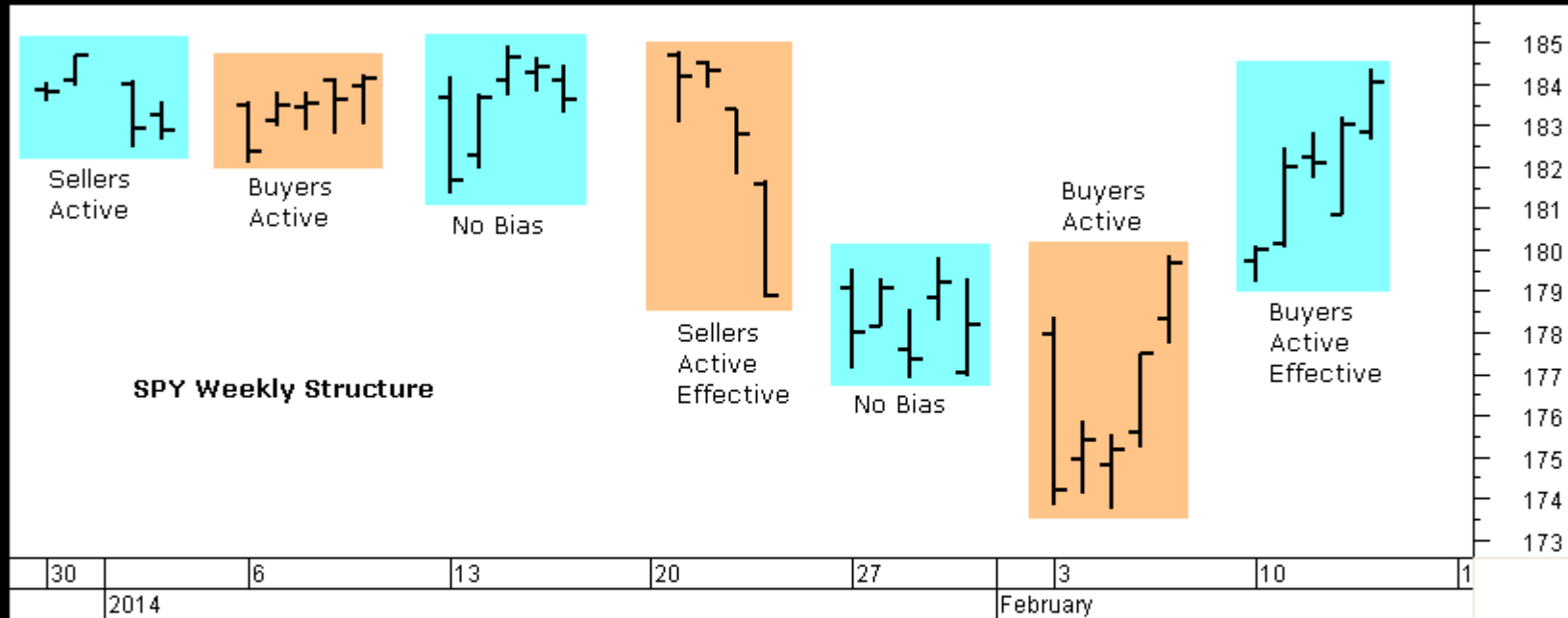
ChartProfit Breadth System - wk ending 02/14

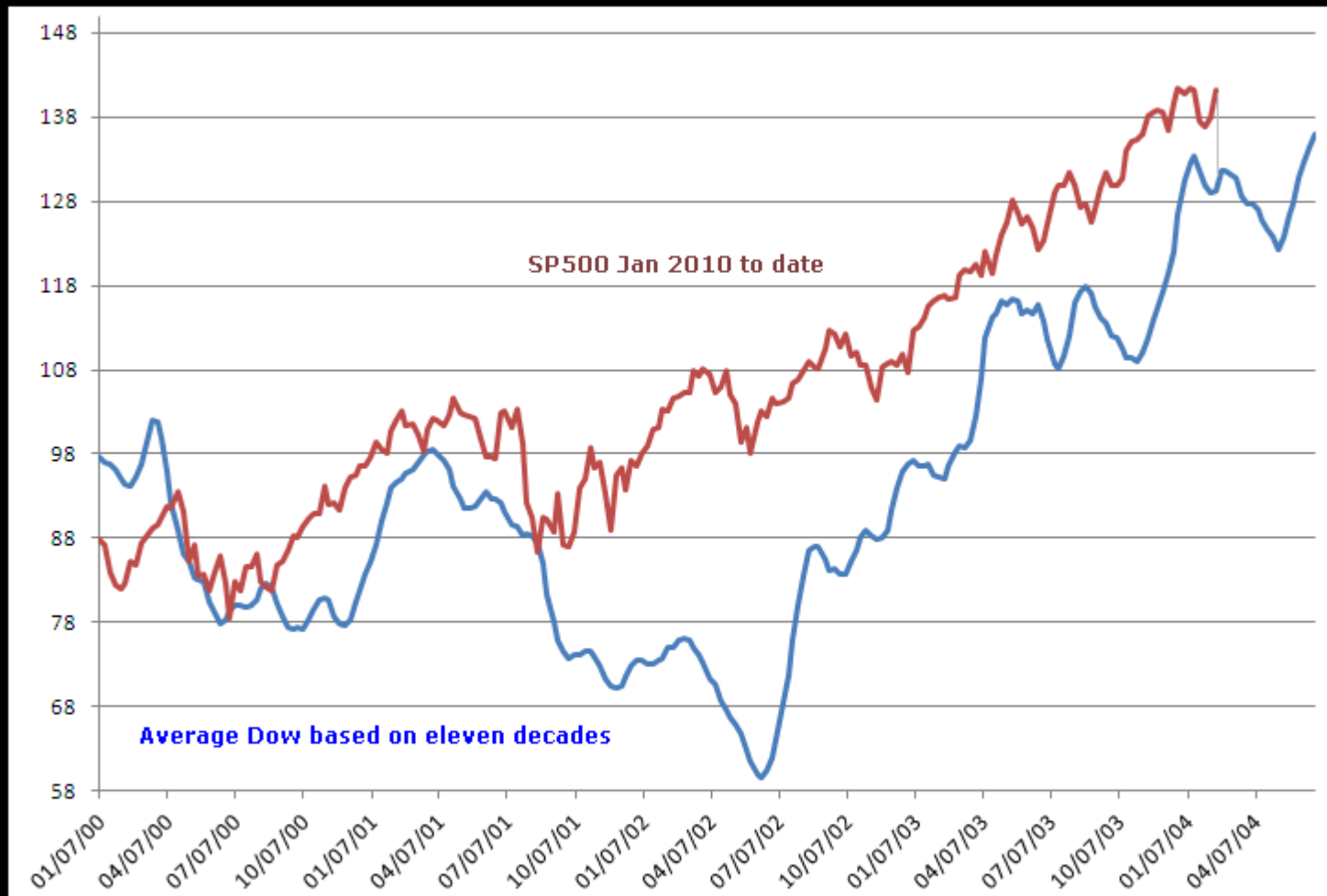
	-5	-4	-3	-2	-1	↓
NYSE	64	63	42	41	39	58
NasDaq	72	72	58	47	42	53
SP500	72	65	36	39	43	61
ND100	72	74	50	54	55	63
R2000	66	66	51	40	33	49
UK	76	77	59	54	58	70

number = % stocks >50day ma

Relative to SPX wk ending 02/14

	-5	-4	-3	-2	-1	↓
NasDaq Comp	■	■	■	■	■	■
NasDaq 100	■	■	■	■	■	■
SOX	■	■	■	■	■	■
Russell 2000	■	■	■	■	■	■





Commitments of Traders

Charts by AIQ TradingExpert

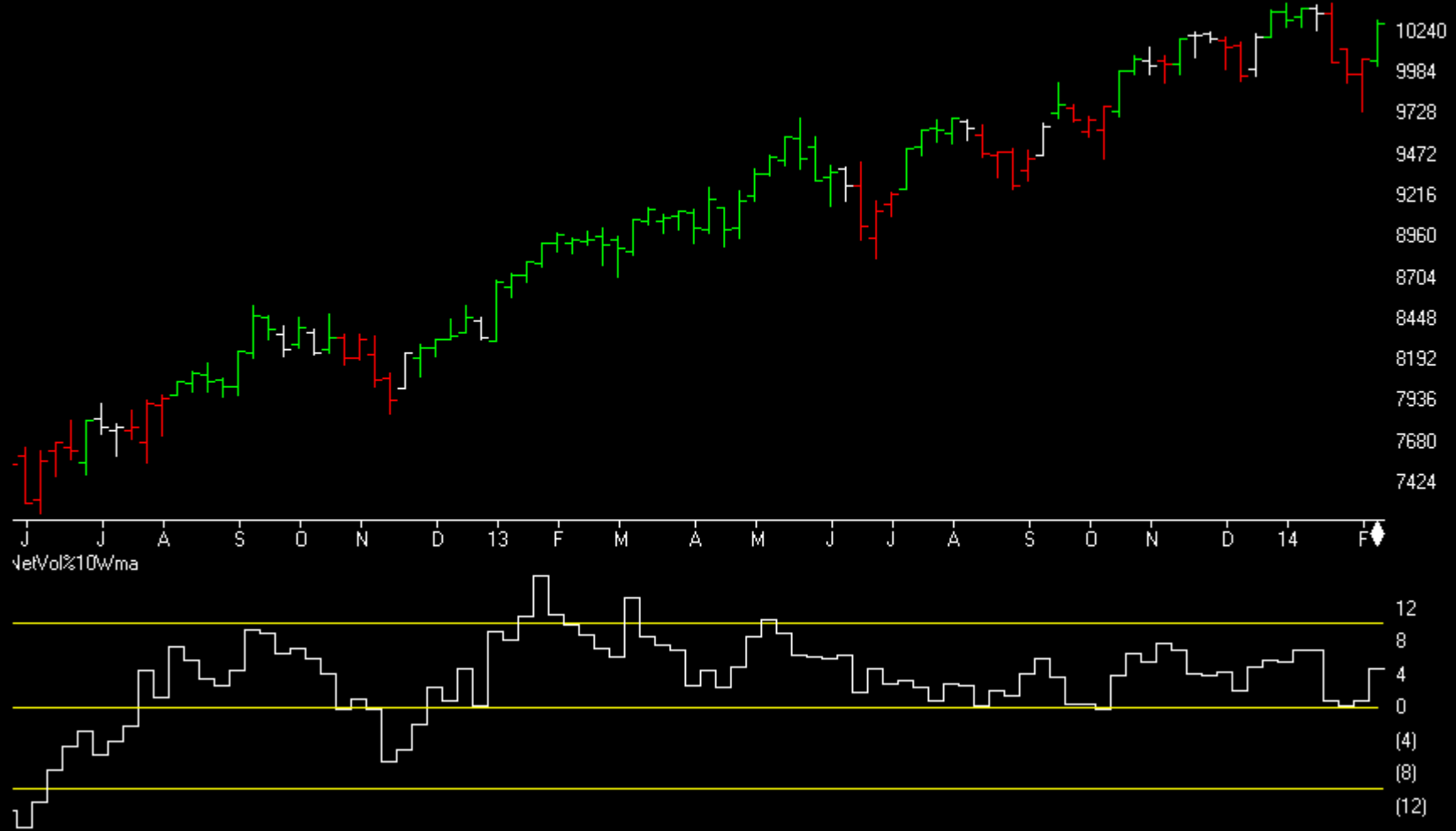
C.O.T.
Quick
View

	SP500	GOLD	CRUDE OIL	T-BONDS	GBPUSD	JPYUSD	EURUSD	USD IX
	CM Net	CM Net	CM Net	CM Net	CM Net	CM Net	CM Net	CM Net
	CM Long	CM Long	CM Long	CM Long	CM Long	CM Long	CM Long	CM Long
	CM Short	CM Short	CM Short	CM Short	CM Short	CM Short	CM Short	CM Short
	LT Net	LT Net	LT Net	LT Net	LT Net	LT Net	LT Net	LT Net
	LT Long	LT Long	LT Long	LT Long	LT Long	LT Long	LT Long	LT Long
	LT Short	LT Short	LT Short	LT Short	LT Short	LT Short	LT Short	LT Short
	ST Net	ST Net	ST Net	ST Net	ST Net	ST Net	ST Net	ST Net
	ST Long	ST Long	ST Long	ST Long	ST Long	ST Long	ST Long	ST Long
	ST Short	ST Short	ST Short	ST Short	ST Short	ST Short	ST Short	ST Short
02/11/14	91.1	40.4	0.0	18.4	24.0	20.5	86.0	49.0
02/04/14	74.1	48.5	9.7	14.6	24.4	18.6	100.0	53.7
02/11/14	91.4	0	0.0	18.3	62.7	74.7	91.1	48.2
02/04/14	82.5	0	0.0	15.4	53.8	65.7	100.0	63.5
02/11/14	21.6	41.2	44.5	76.8	92.8	98.5	51.2	62.6
02/04/14	33.4	43.9	66.5	83.7	90.6	100.0	33.4	59.8
02/11/14	37.8	62.6	100.0	71.7	81.6	75.0	7.8	44.9
02/04/14	0.0	54.5	100.0	70.3	82.9	77.2	0.0	39.4
02/11/14	14.0	100	91.0	61.1	54.7	16.9	7.7	36.4
02/04/14	26.2	100	100.0	58.2	59.6	25.3	0.0	34.9
02/11/14	39.4	59	18.1	41.1	6.8	2.9	67.3	42.0
02/04/14	100.0	57.5	48.4	33.7	5.3	0.0	70.3	48.3
02/11/14	16.7	18	34.0	89.8	63.4	66.1	40.7	73.7
02/04/14	43.0	14.1	18.7	100.0	59.9	66.0	12.5	75.7
02/11/14	19.1	30.8	100.0	81.1	7.9	35.0	15.5	100.0
02/04/14	23.6	0	79.7	86.6	18.0	38.9	0.0	83.5
02/11/14	74.4	69.5	100.0	19.7	4.7	5.8	27.3	40.9
02/04/14	44.9	48.1	98.0	15.2	15.2	7.4	53.3	6.6

Market Charts

Charts by AIQ TradingExpert

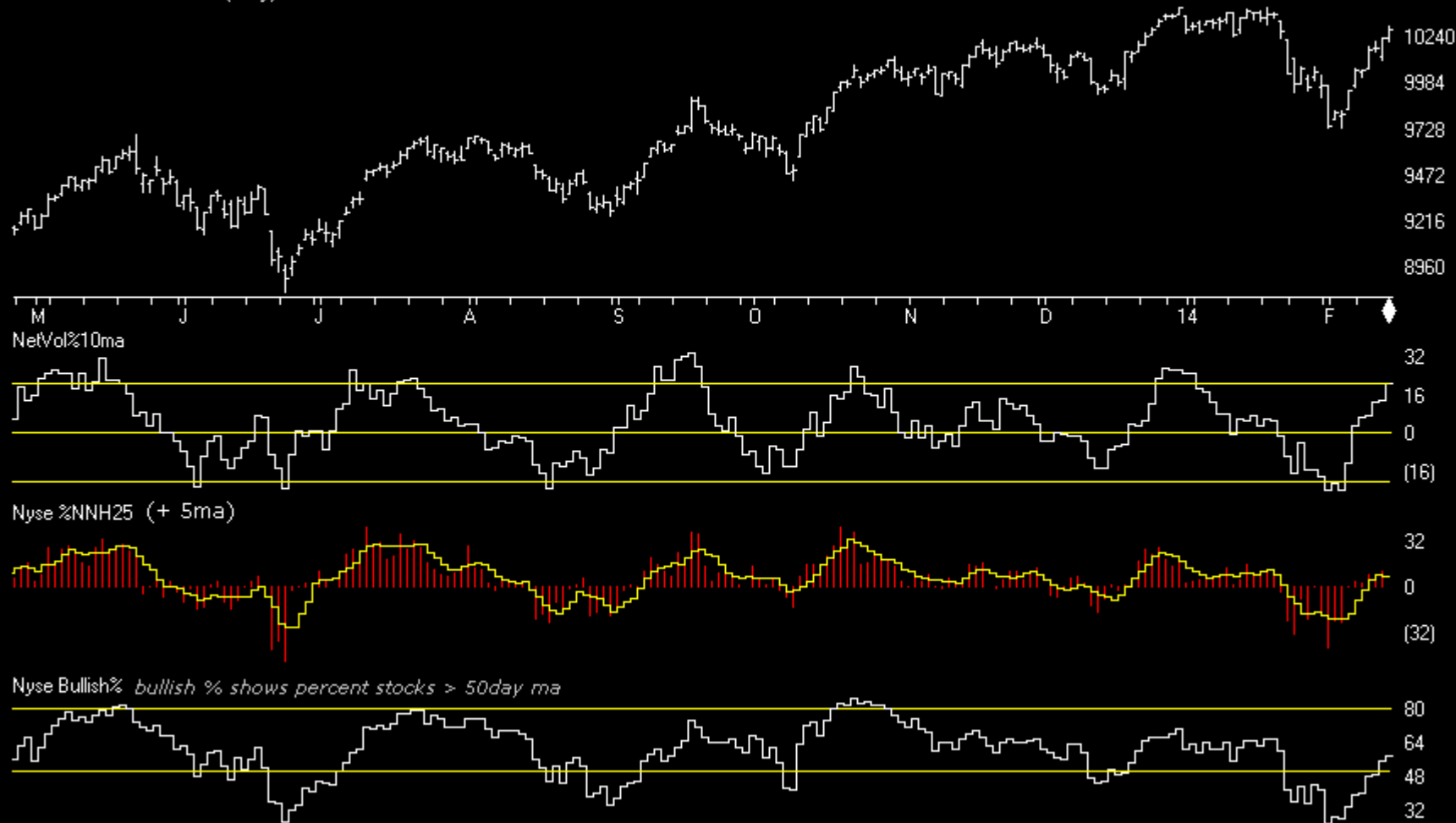
MARKET CHART NYSE (Weekly) + Chartprofit Market Timing System (color study)



Market Charts

Charts by AIQ TradingExpert

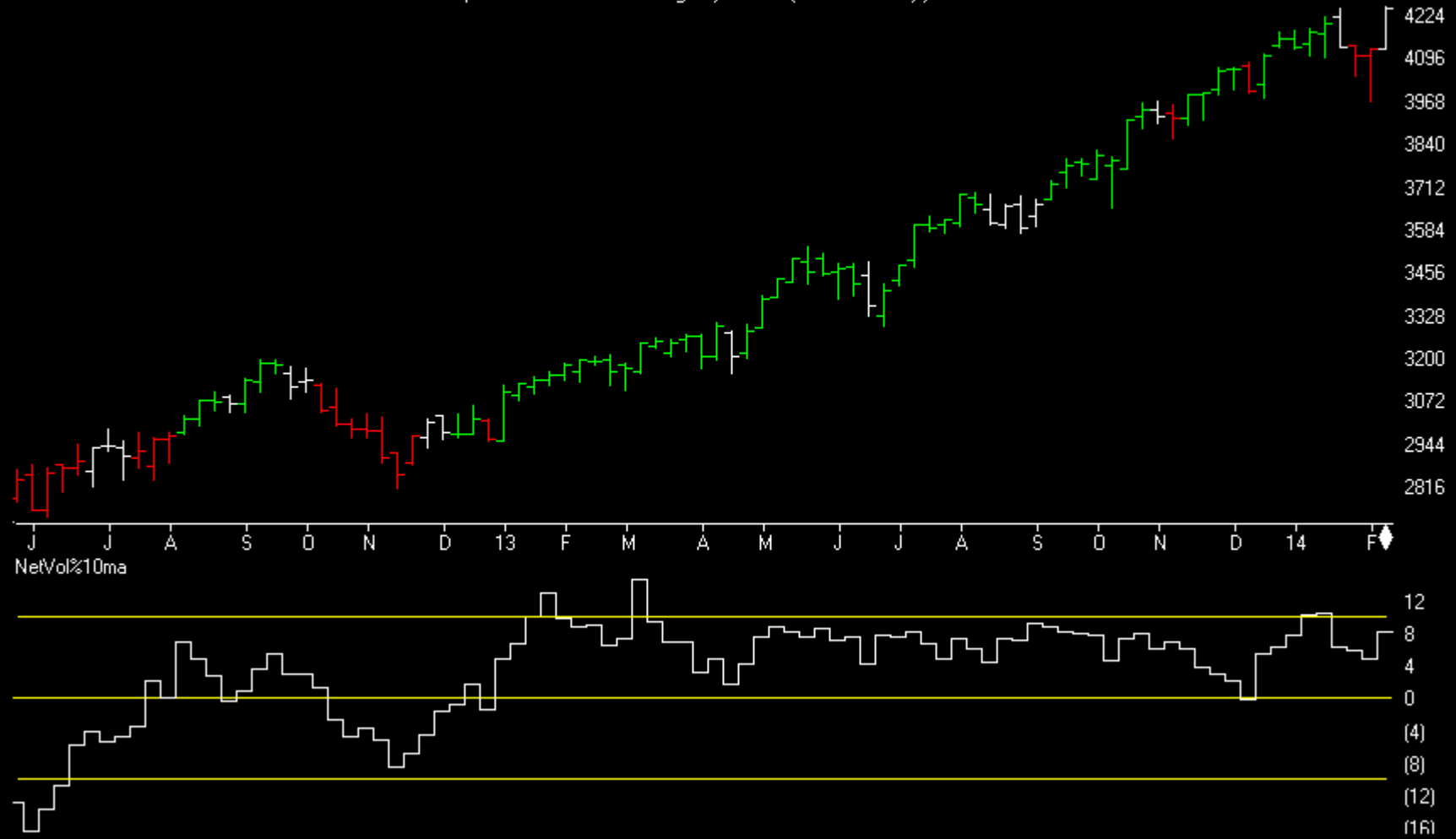
MARKET CHART NYSE (Daily)



Market Charts

Charts by AIQ TradingExpert

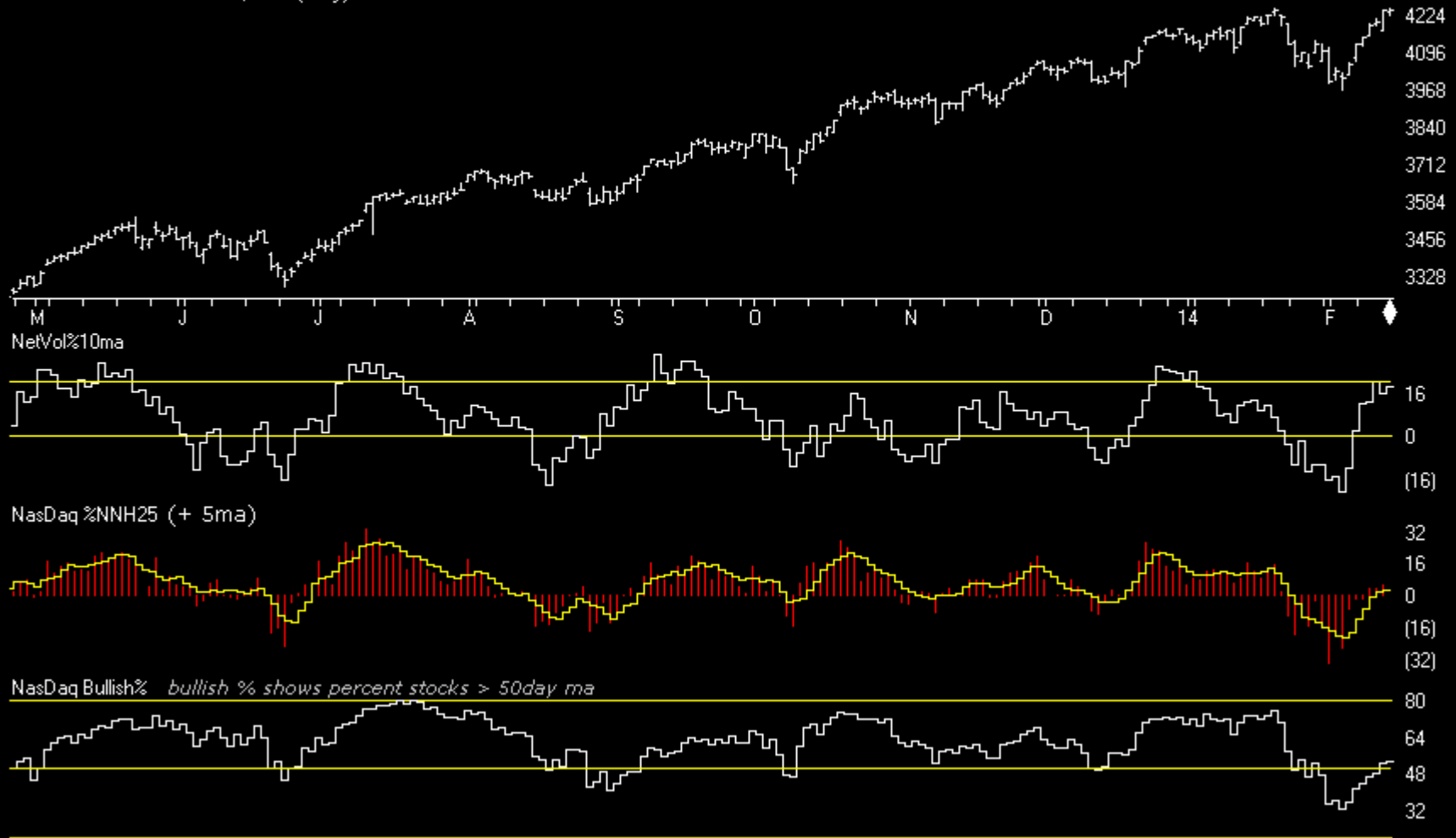
MARKET CHART NASDAQ 1800 (Weekly) + Chartprofit Market Timing System (color study)



Market Charts

Charts by AIQ TradingExpert

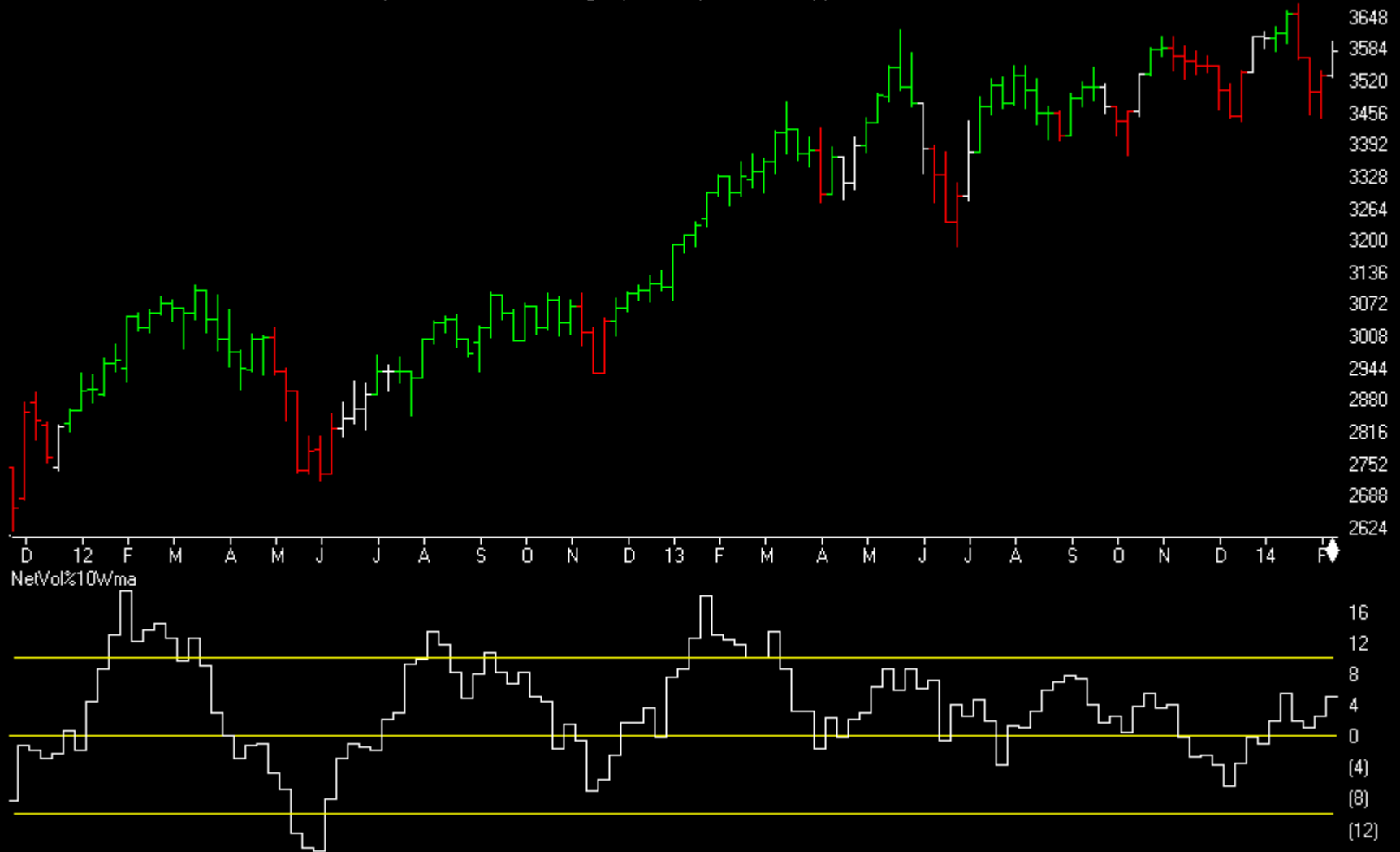
MARKET CHART NASDAQ 1800 (Daily)



Market Charts

Charts by AIQ TradingExpert

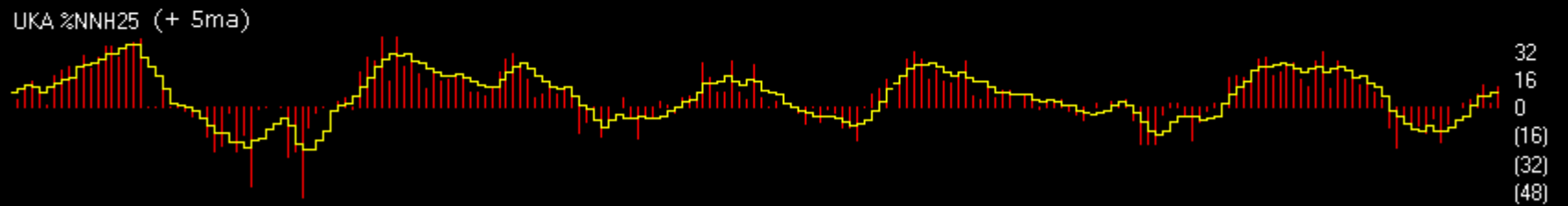
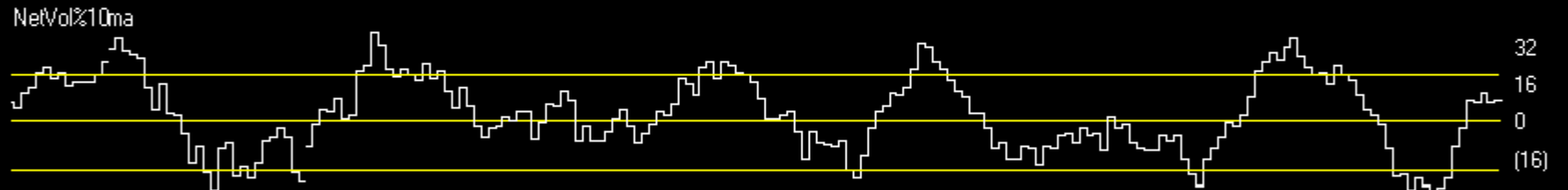
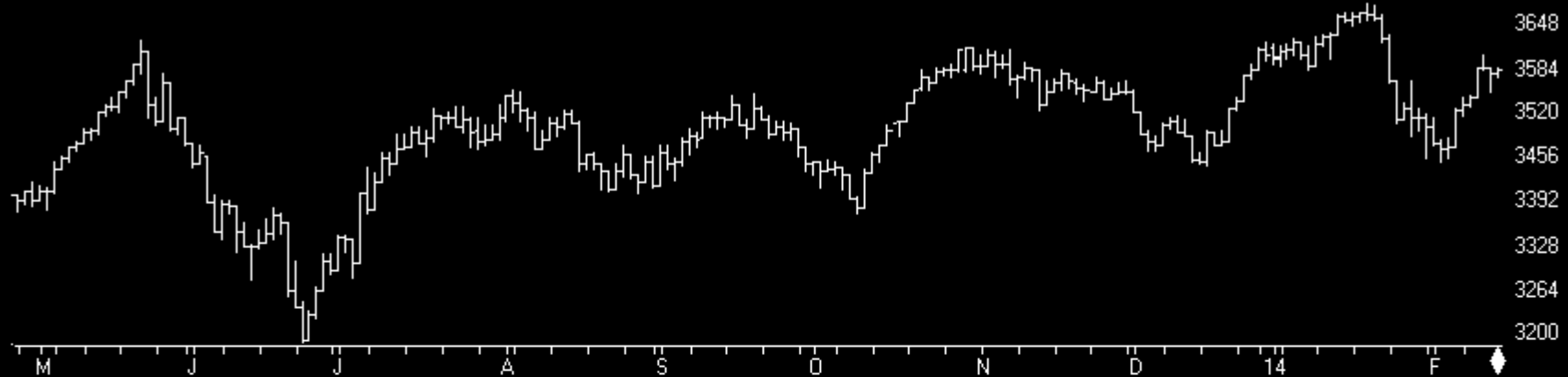
UK ALLSHARE MKT 2013 (Weekly) + Chartprofit Market Timing System (color study)



Market Charts

Charts by AIQ TradingExpert

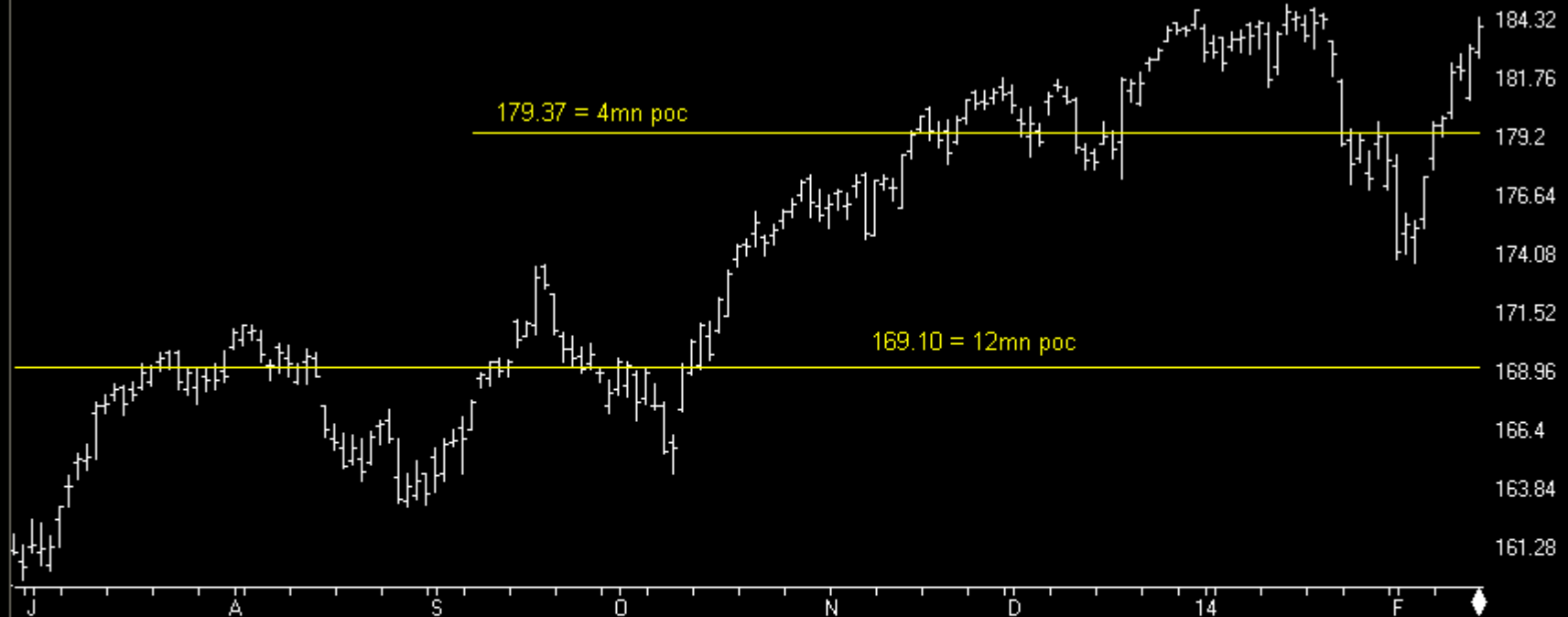
UK ALLSHARE MKT 2013 (Daily)



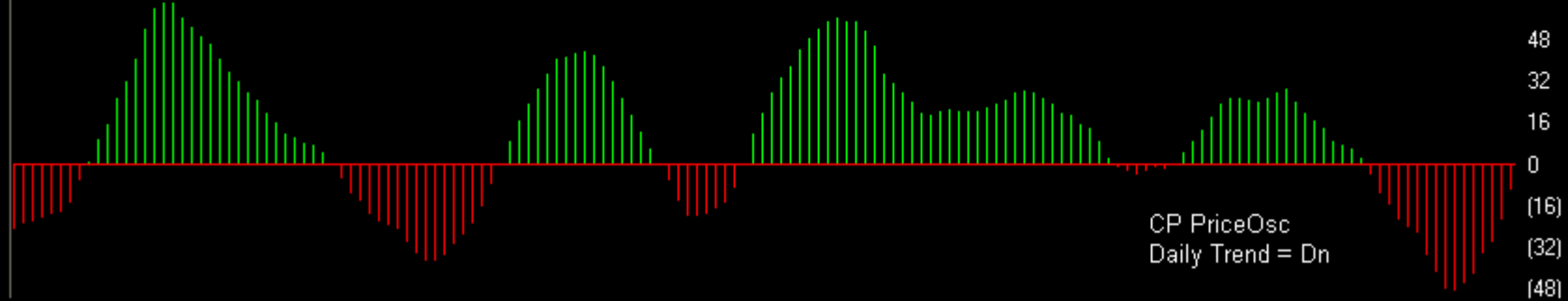
Index ETFs

Charts by AIQ TradingExpert

13 SPY SP500 ETF (Daily)

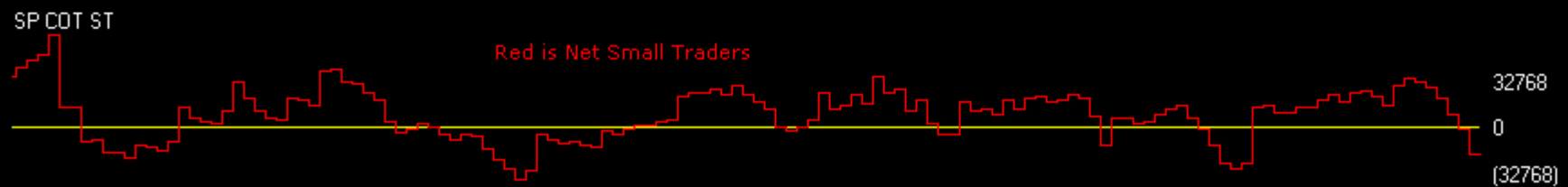
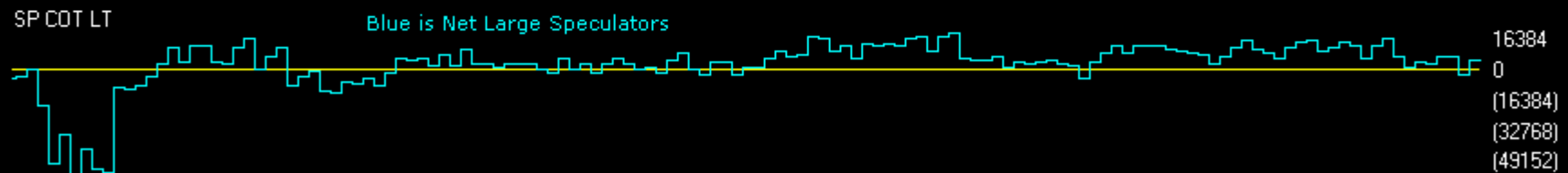
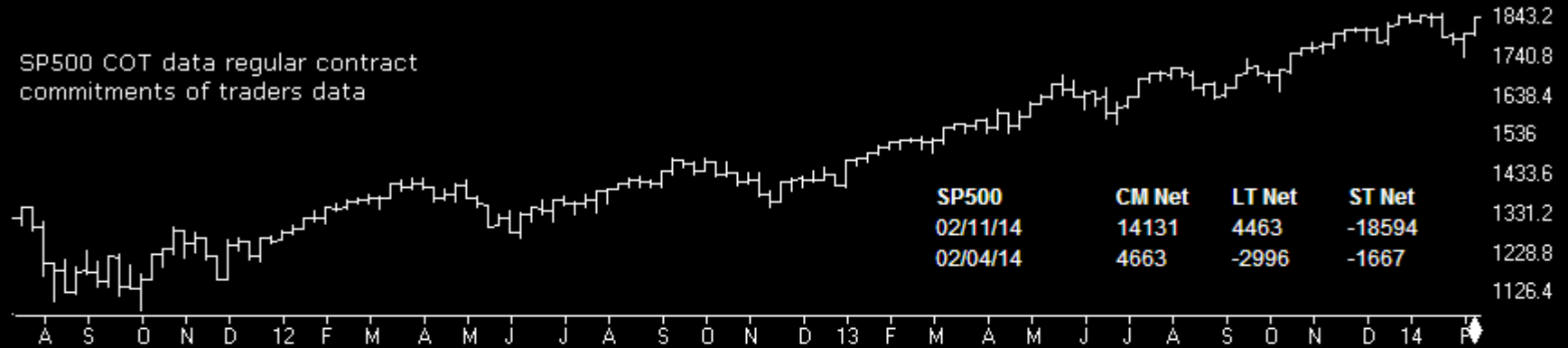


CP PriceOsc



SP500	CM Net	CM Long	CM Short	LT Net	LT Long	LT Short	ST Net	ST Long	ST Short
02/11/14	91.1	91.4	21.6	37.8	14.0	39.4	16.7	19.1	74.4
02/04/14	74.1	82.5	33.4	0.0	26.2	100.0	43.0	23.6	44.9

SP500 COT data regular contract commitments of traders data



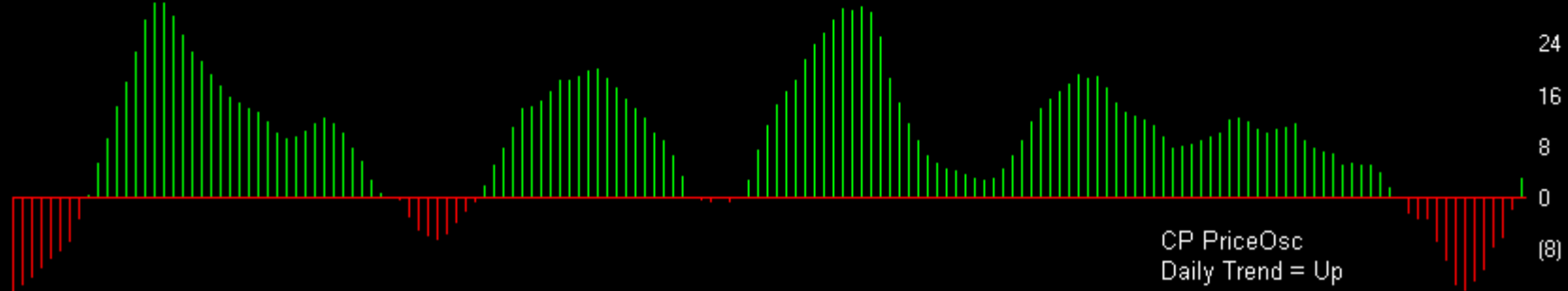
Index ETFs

Charts by AIQ TradingExpert

12 QQQ N100 ETF (Daily)



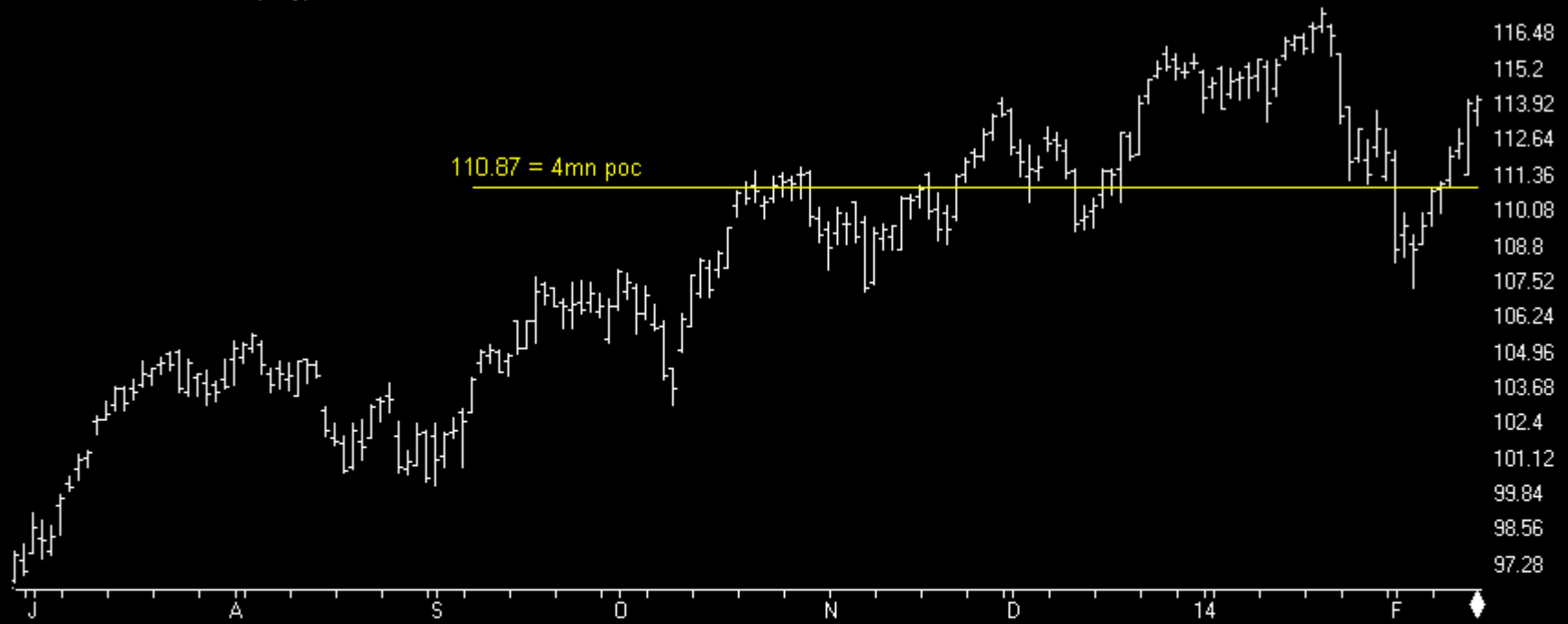
CP PriceOsc



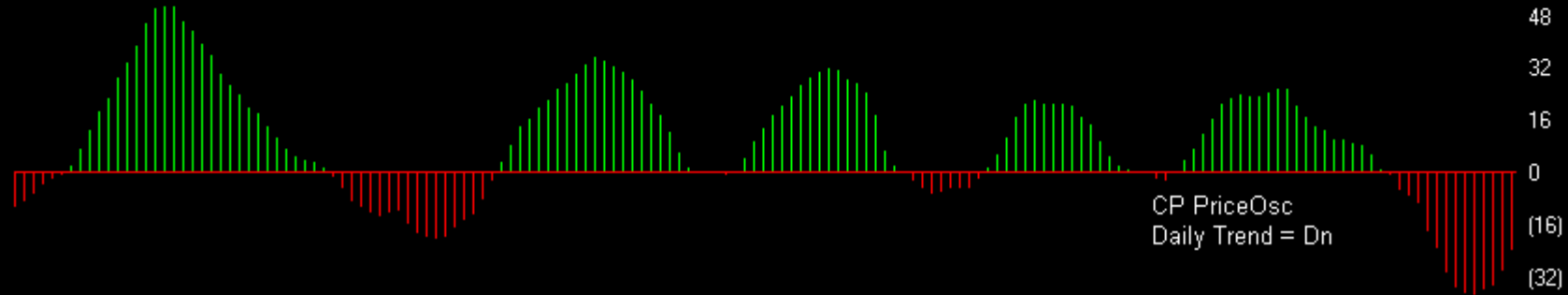
Index ETFs

Charts by AIQ TradingExpert

11 IwM R2000 ETF (Daily)



CP PriceOsc



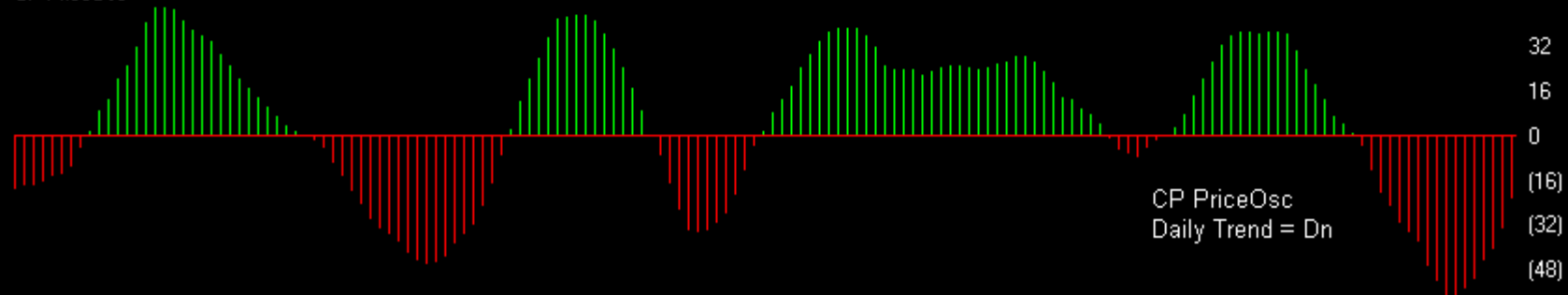
Index ETFs

Charts by AIQ TradingExpert

1U DIA DUW ETF (Daily)



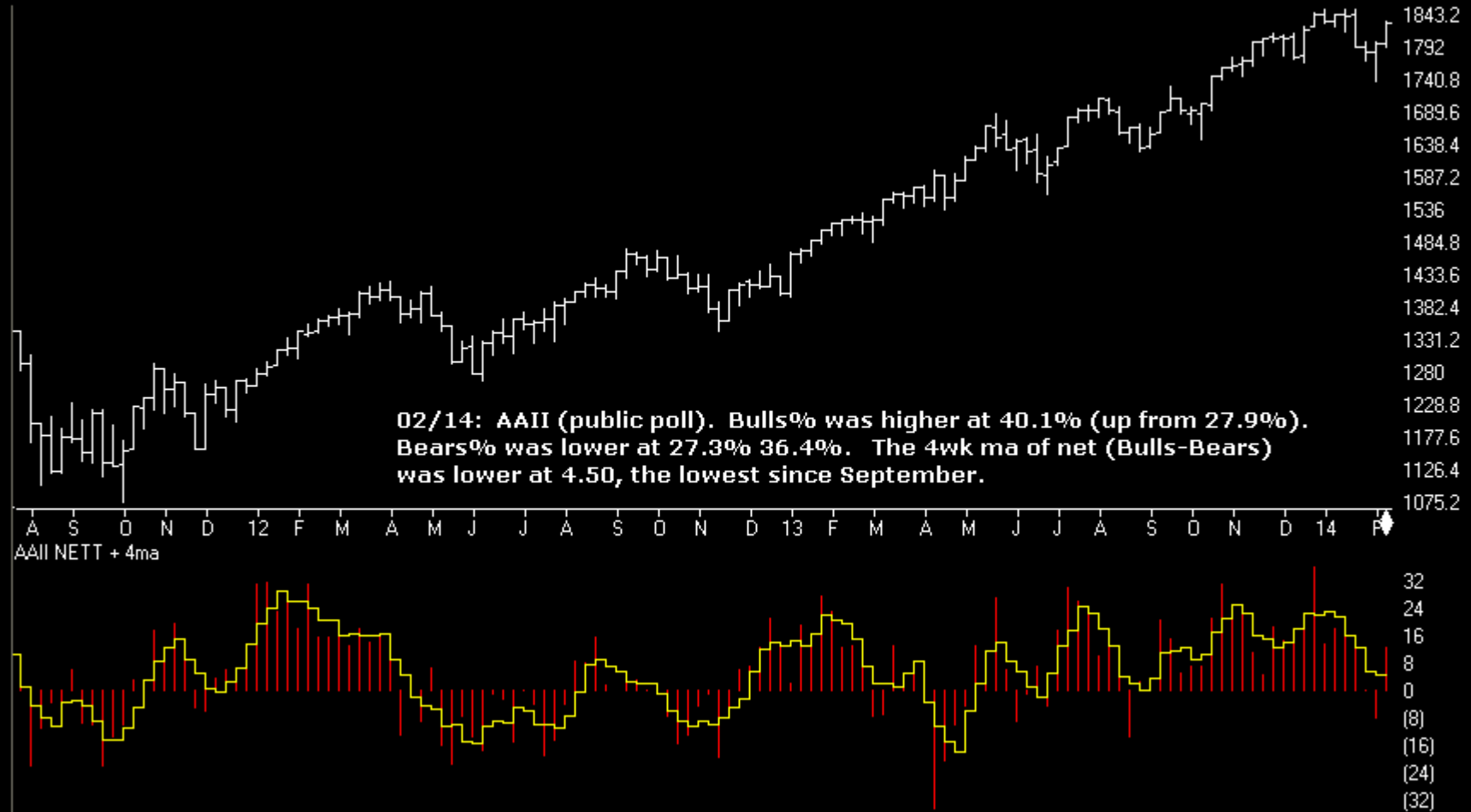
CP PriceOsc



Sentiment

Charts by AIQ TradingExpert

SP500 Index (Weekly) + AAI (public) poll

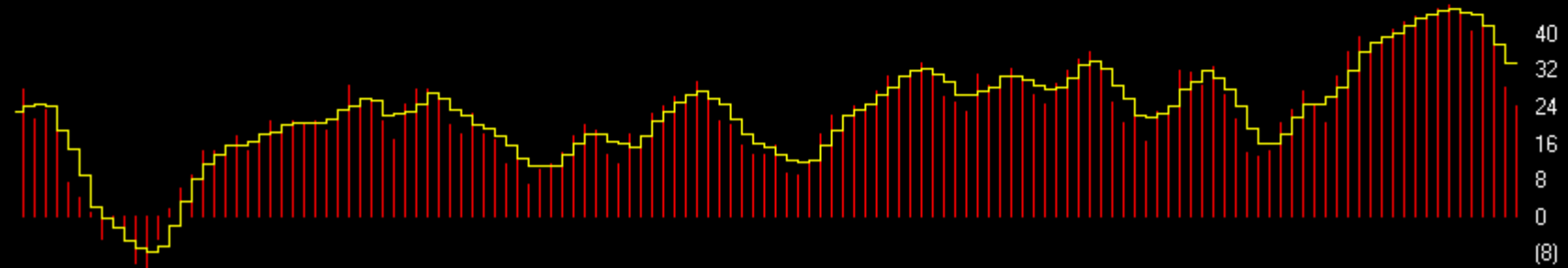
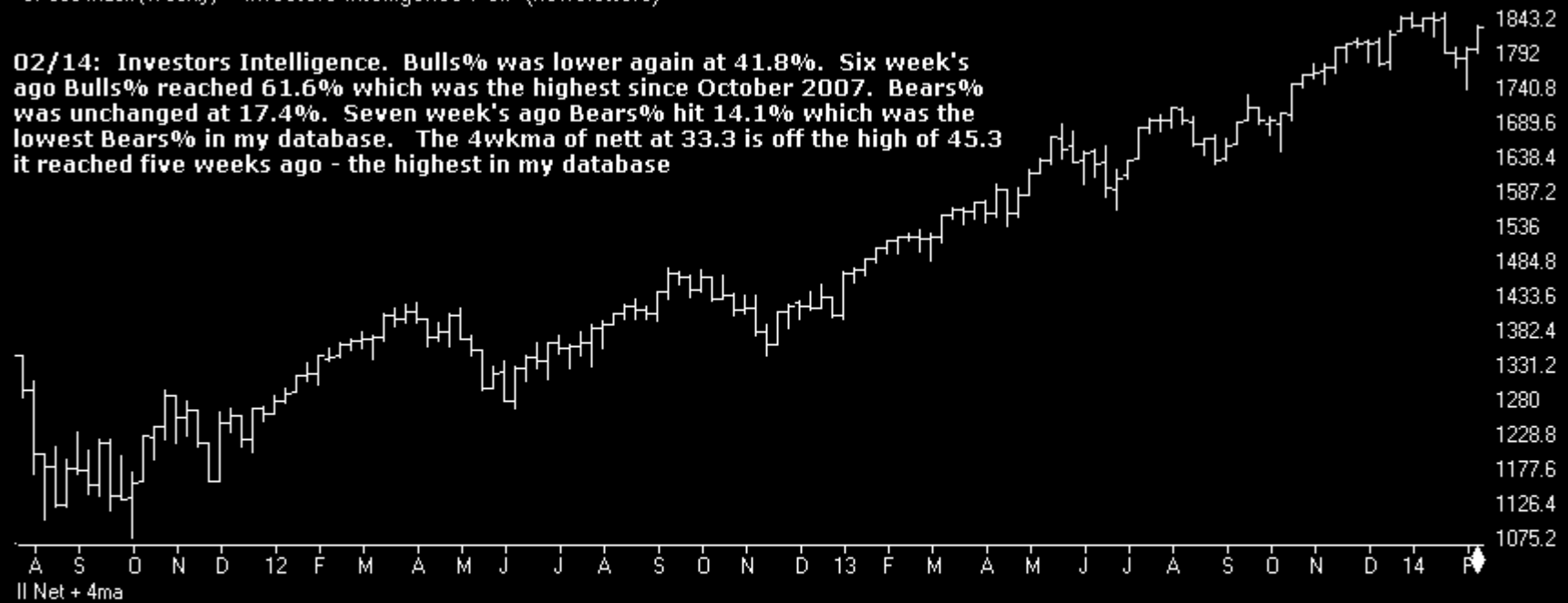


Sentiment

Charts by AIQ TradingExpert

SP500 Index (Weekly) + Investors Intelligence Poll (newsletters)

02/14: Investors Intelligence. Bulls% was lower again at 41.8%. Six week's ago Bulls% reached 61.6% which was the highest since October 2007. Bears% was unchanged at 17.4%. Seven week's ago Bears% hit 14.1% which was the lowest Bears% in my database. The 4wkma of nett at 33.3 is off the high of 45.3 it reached five weeks ago - the highest in my database



Sentiment

Charts by AIQ TradingExpert

SP500 Index (Weekly) + Market Vane (advisers)



MVane + 4ma

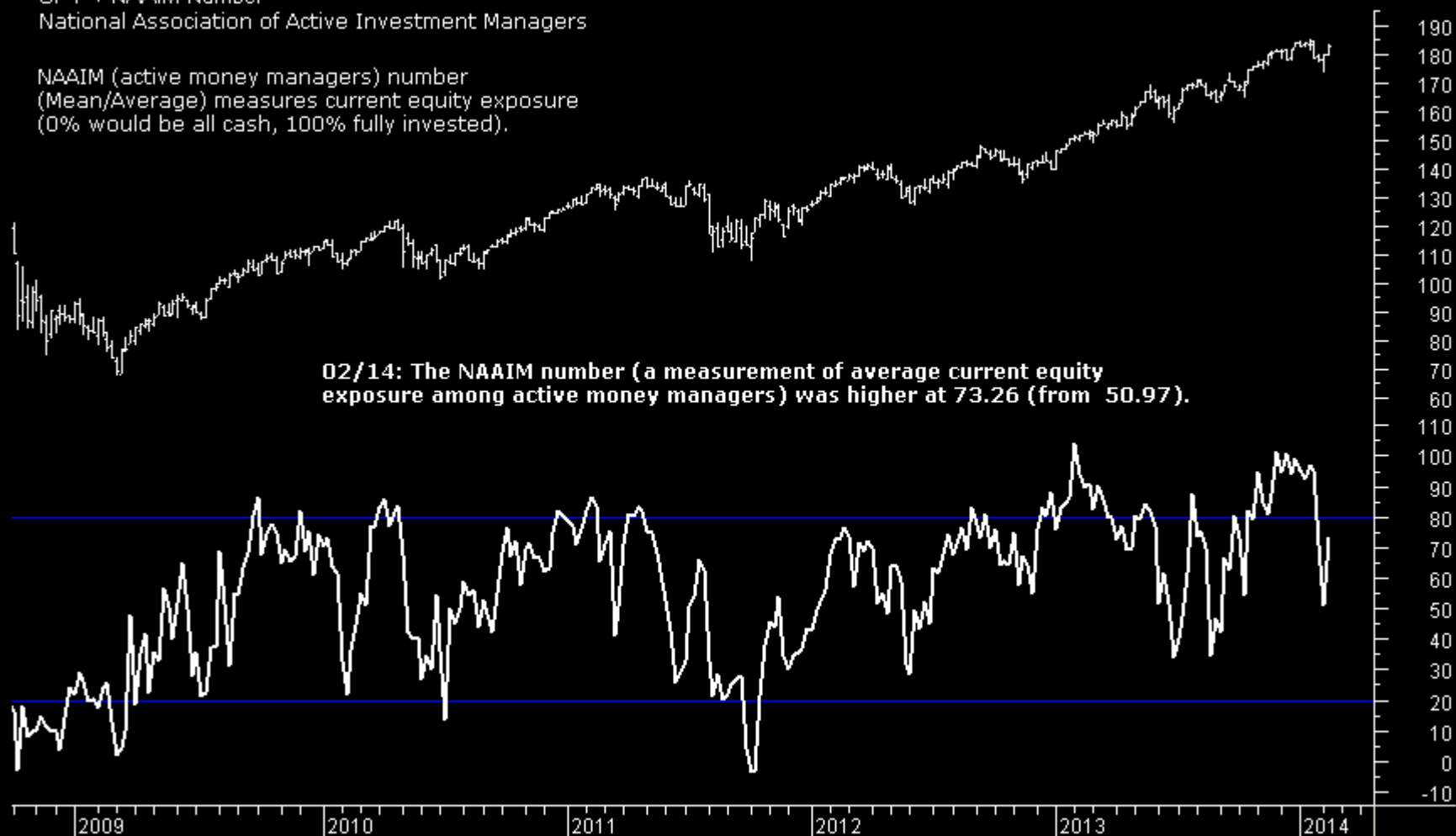
68
64
60
56
52
48
44
40

Sentiment

Charts by AIQ TradingExpert

SPY + NAAIM Number
National Association of Active Investment Managers

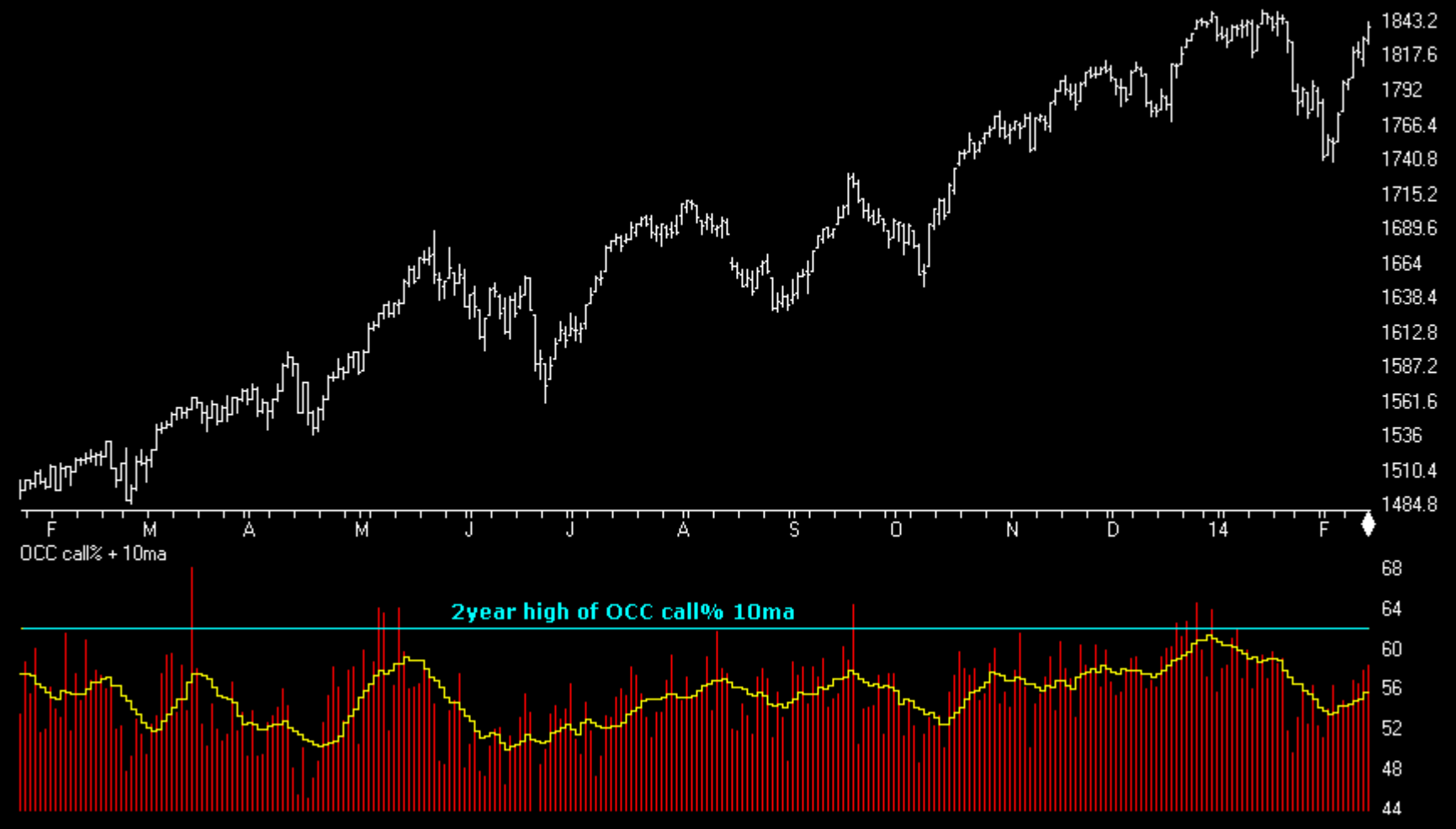
NAAIM (active money managers) number
(Mean/Average) measures current equity exposure
(0% would be all cash, 100% fully invested).



Sentiment

Charts by AIQ TradingExpert

SP500 Index (Daily) + OCC Calls% (equities only)

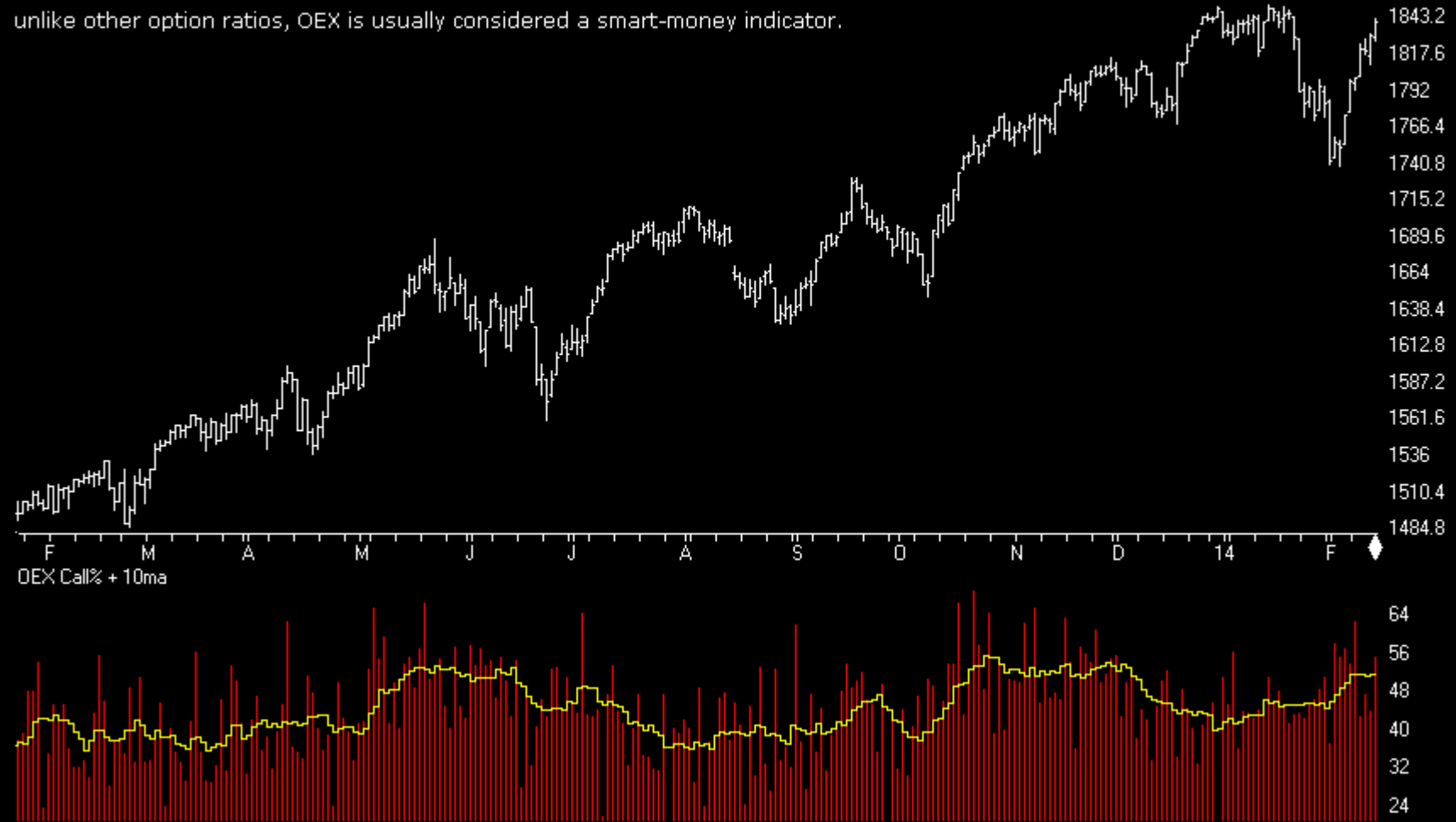


Sentiment

Charts by AIQ TradingExpert

SP500 Index (Daily) + OEX Calls%

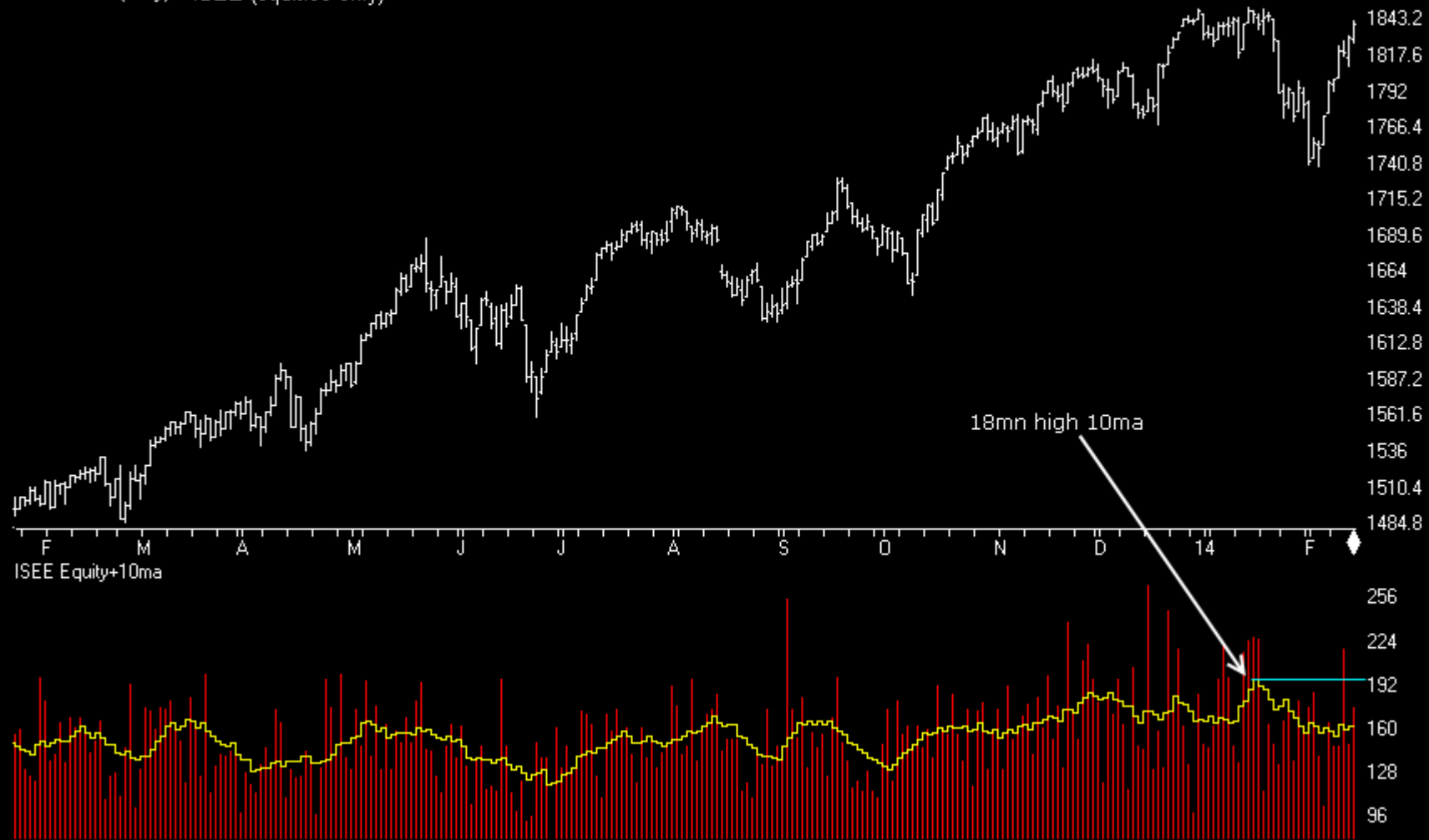
unlike other option ratios, OEX is usually considered a smart-money indicator.



Sentiment

Charts by AIQ TradingExpert

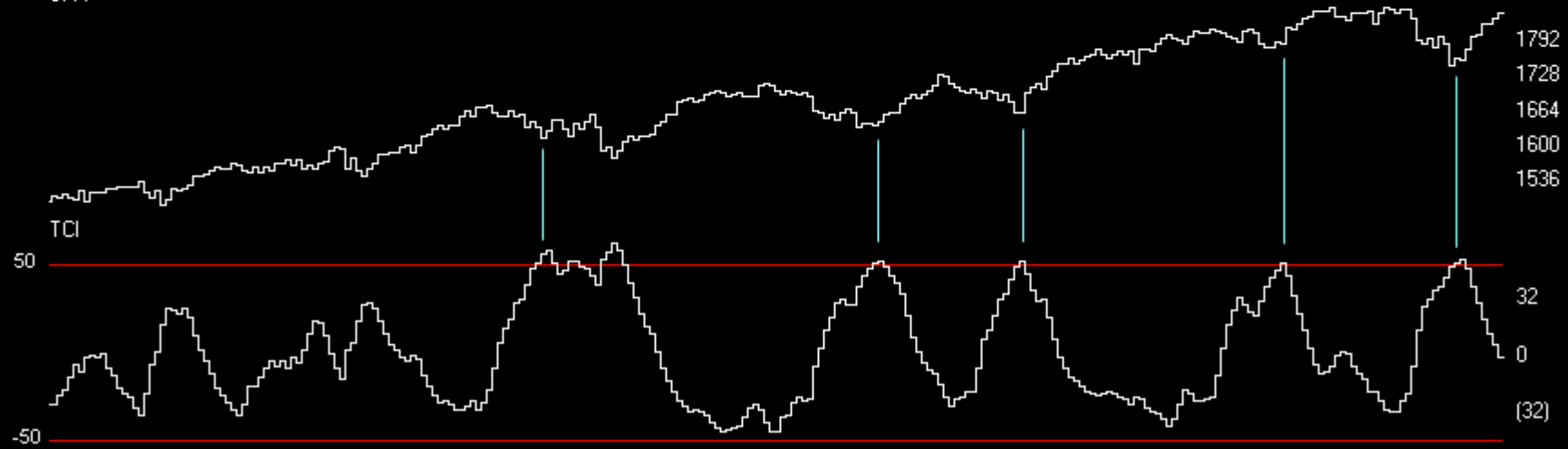
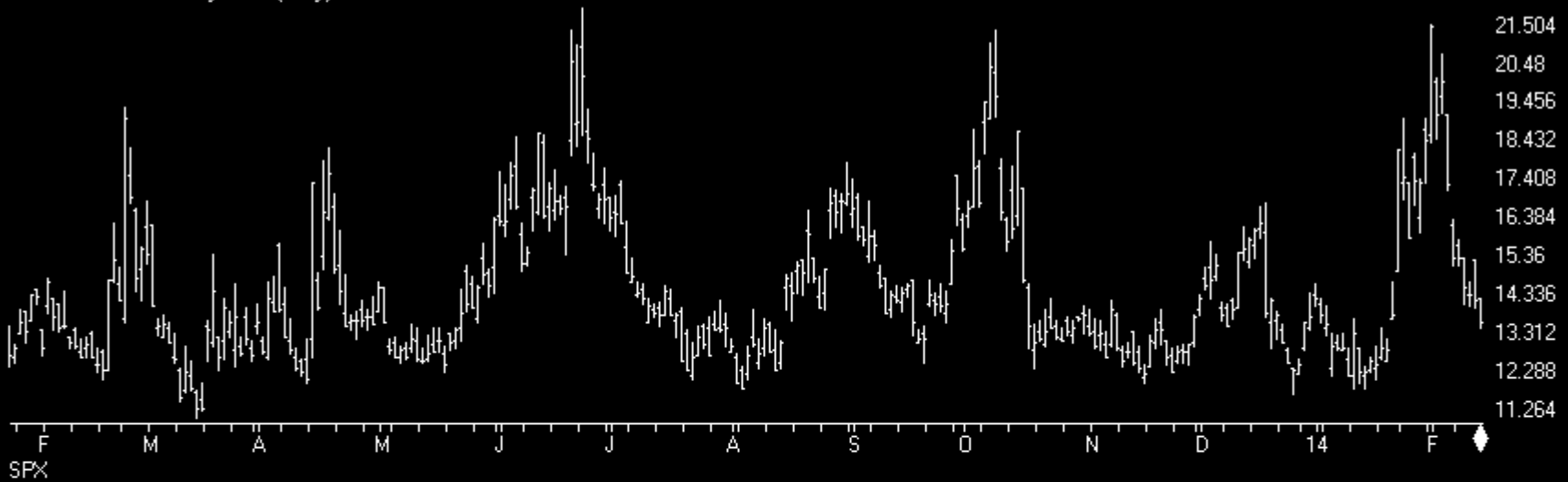
SP500 Index (Daily) + ISEE (equities only)



Sentiment

Charts by AIQ TradingExpert

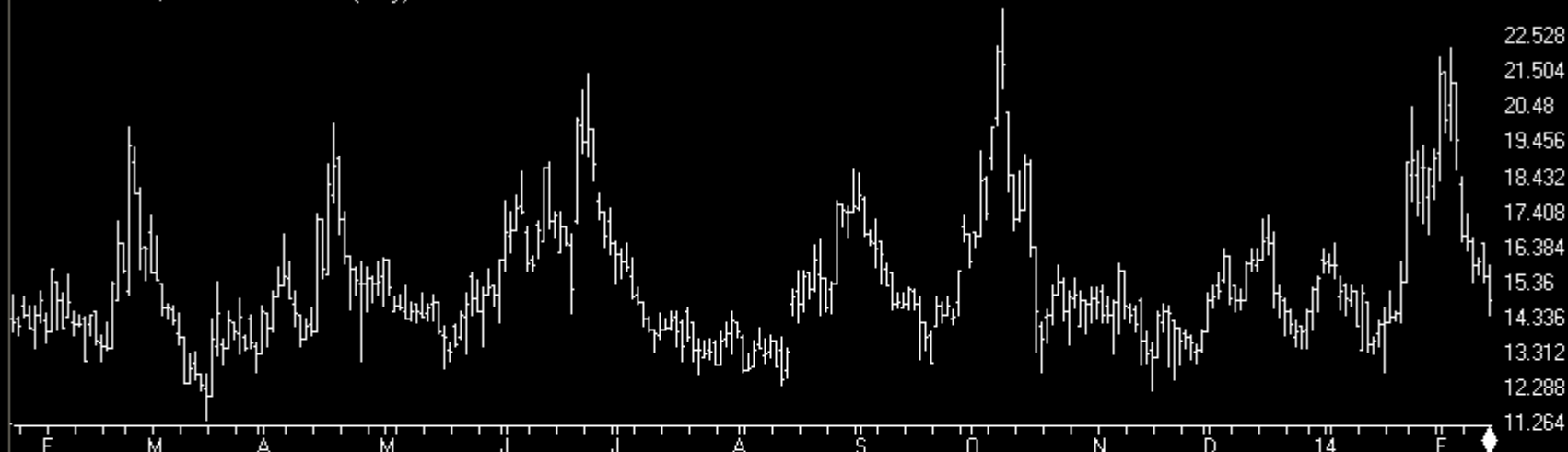
VIX - S&P 500 Volatility Index (Daily)



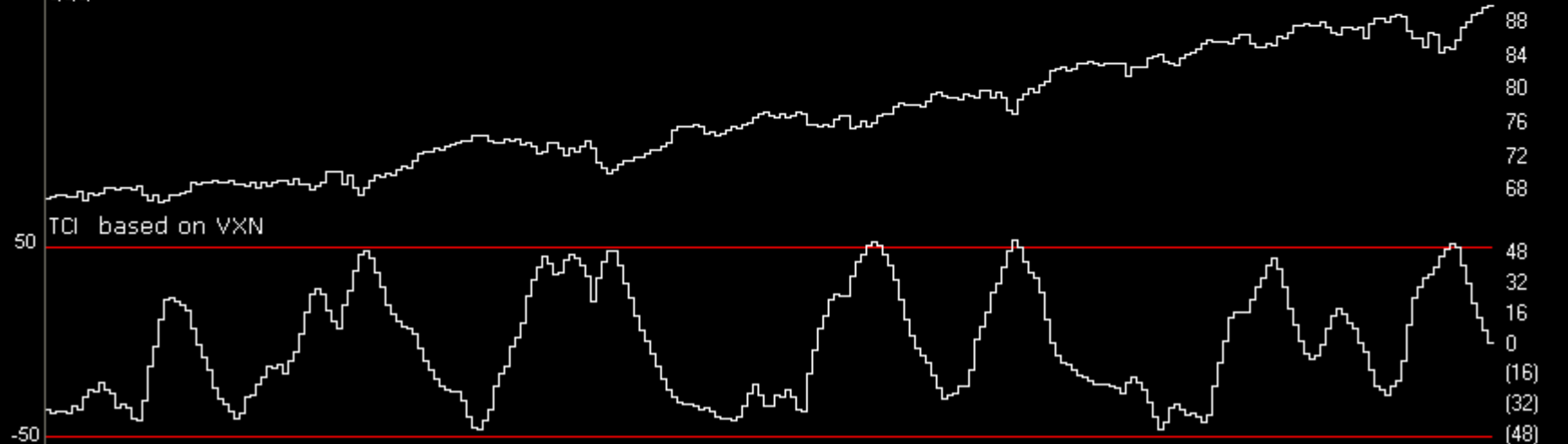
Sentiment

Charts by AIQ TradingExpert

VXN - NASDAQ VOLATILITY INDEX (Daily)



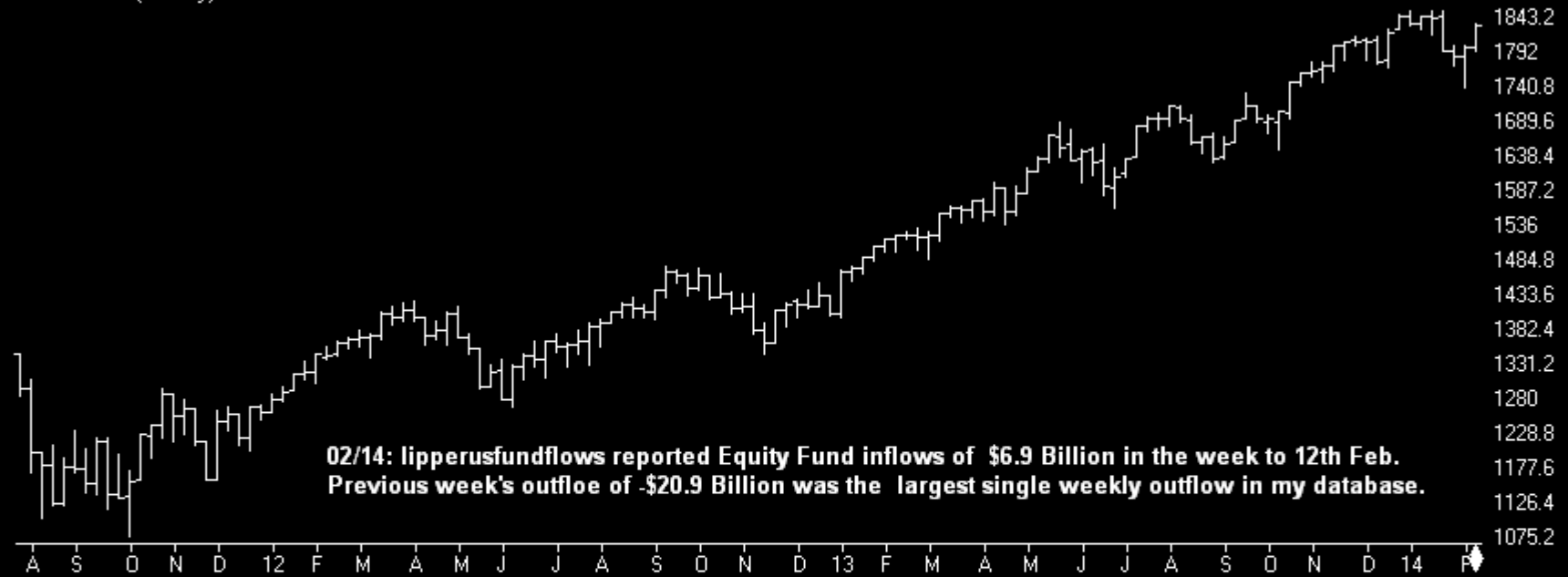
QQQ



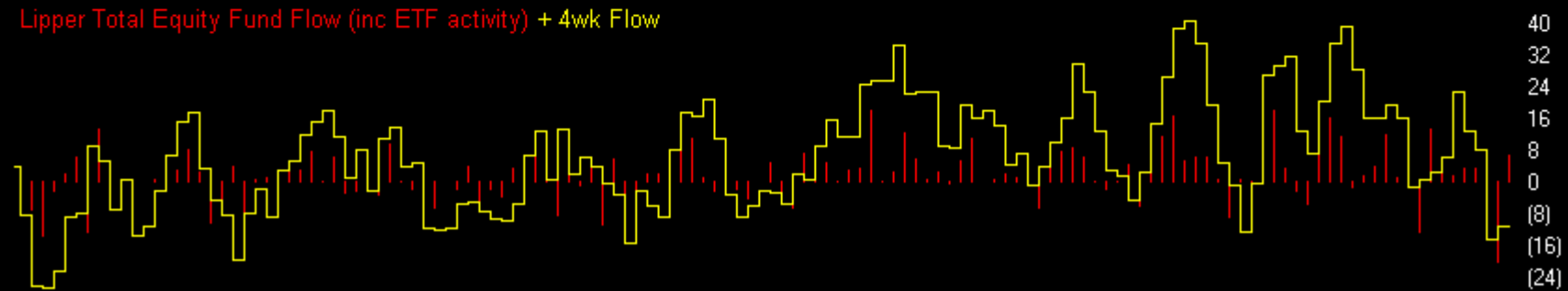
Sentiment

Charts by AIQ TradingExpert

SP500 Index (Weekly)



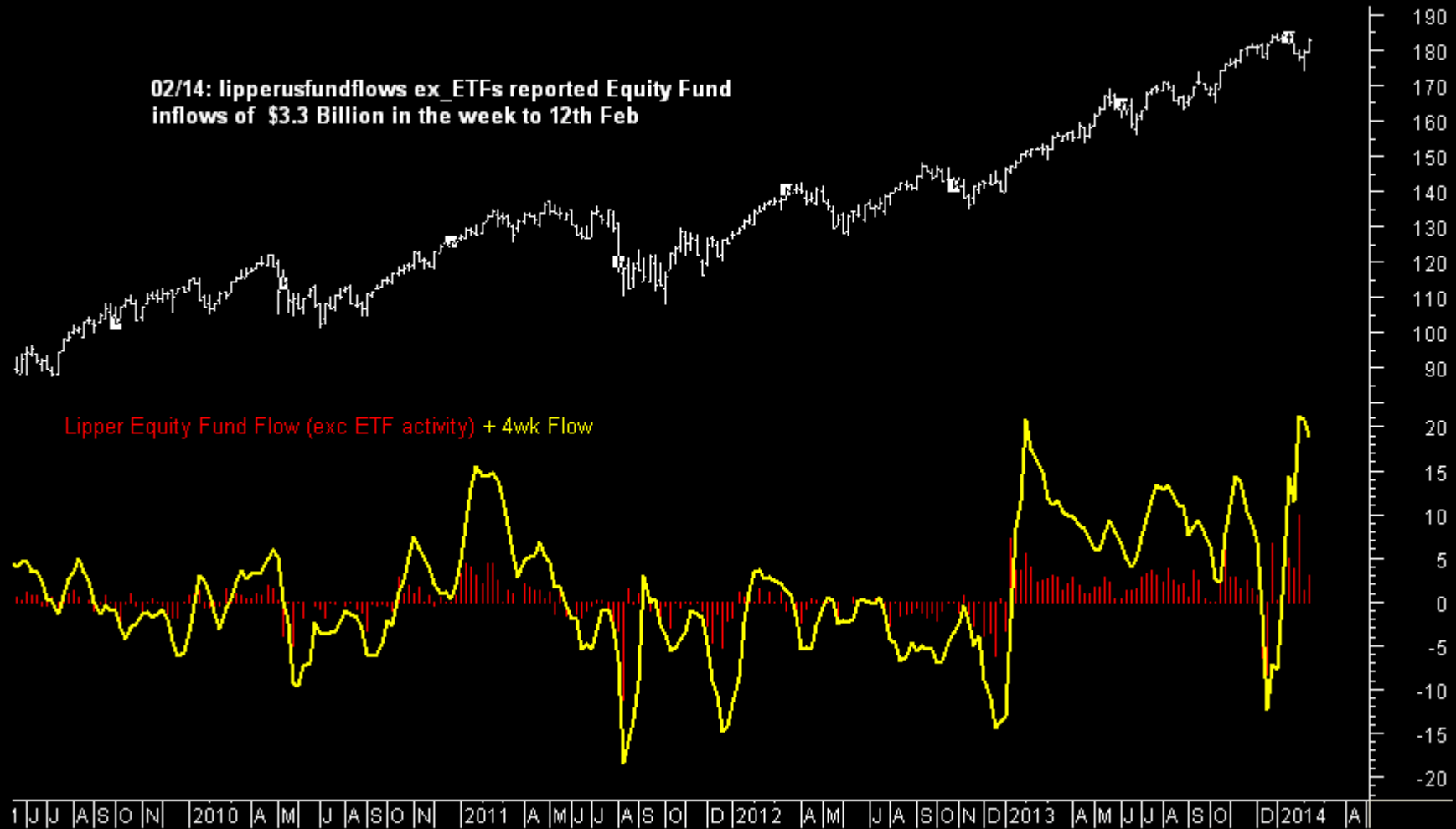
Lipper Total Equity Fund Flow (inc ETF activity) + 4wk Flow



Sentiment

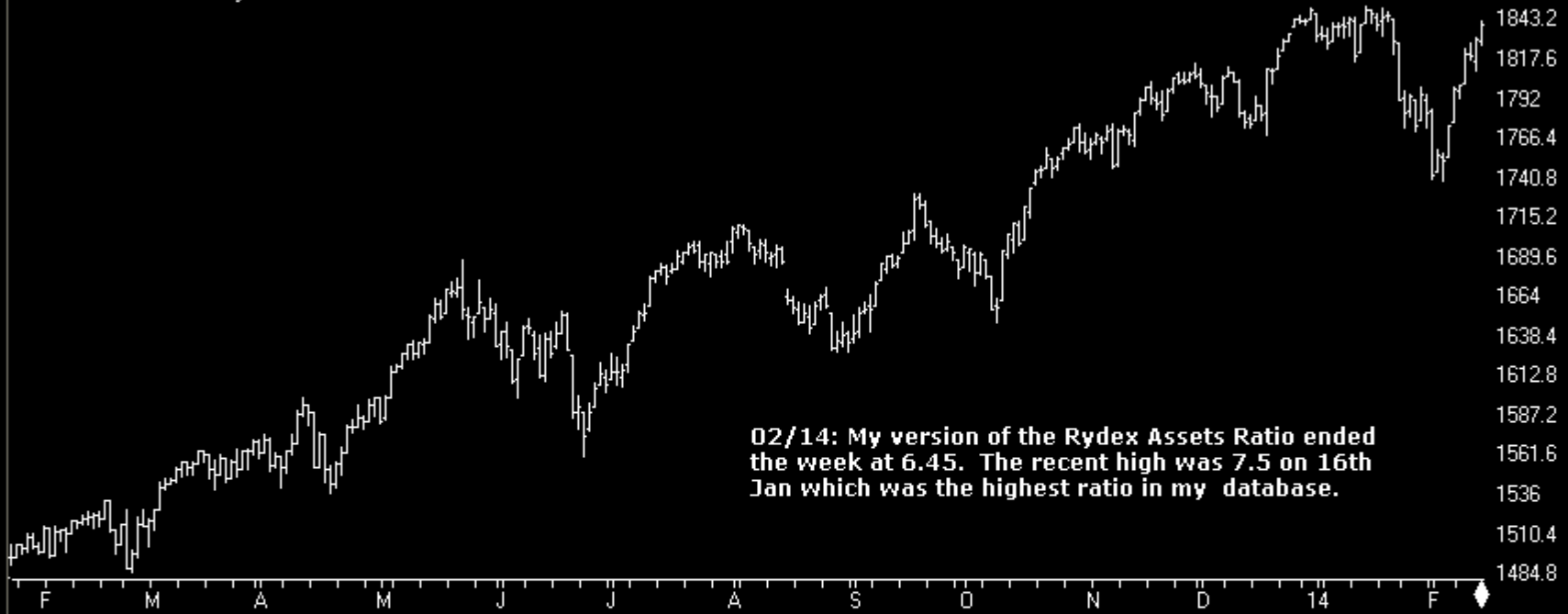
LIPPER Equity Fds (exc ETF) net flow (\$billion)

02/14: lipperusfundflows ex ETFs reported Equity Fund inflows of \$3.3 Billion in the week to 12th Feb



Sentiment

SP500 Index (Daily) + Rydex Assets Ratio



RyMajAssetsRatio

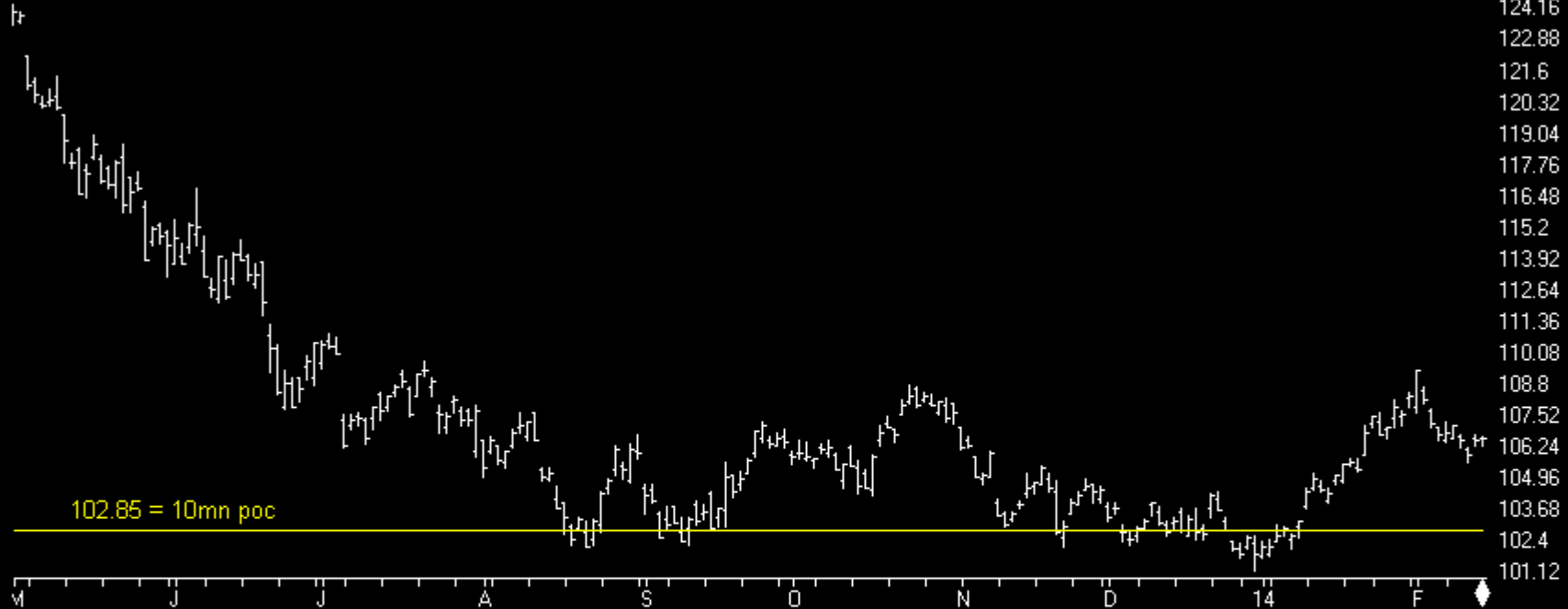
Rydex Assets Ratio (CP version)

7
6
5
4
3

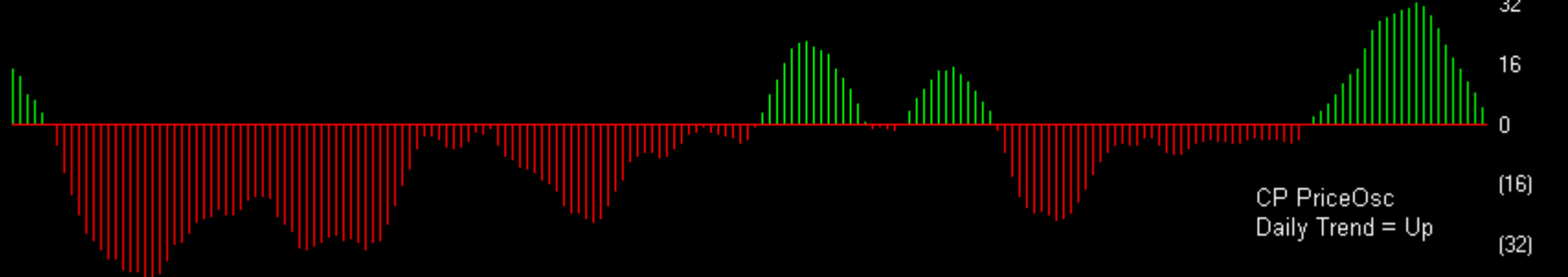
Bonds

Charts by AIQ TradingExpert

Lehman 20+ Year T Bond ETF (Daily)



CP PriceOsc

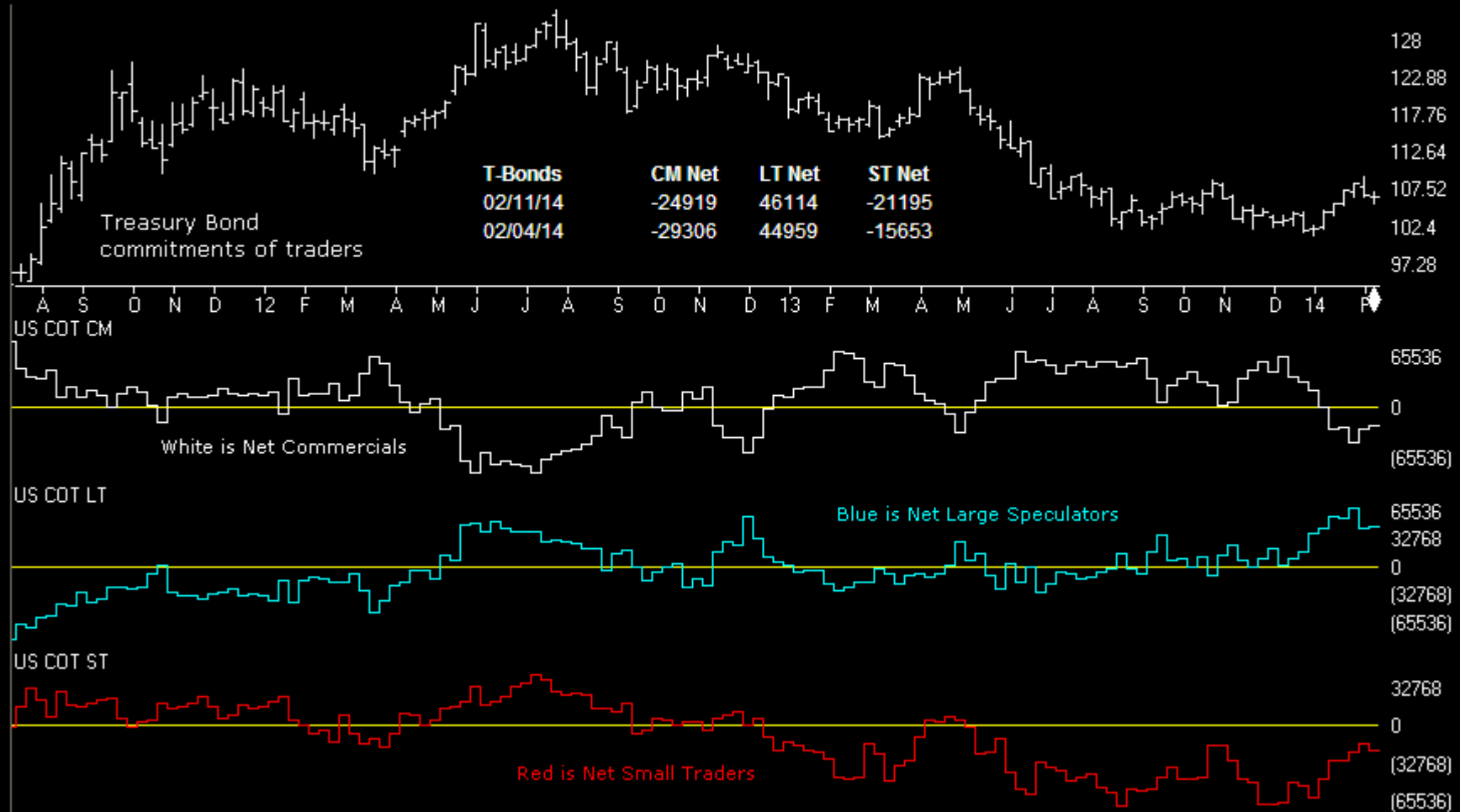


CP PriceOsc (16)
Daily Trend = Up (32)

Bonds

Charts by AIQ TradingExpert

T-BONDS	CM Net	CM Long	CM Short	LT Net	LT Long	LT Short	ST Net	ST Long	ST Short
02/11/14	18.4	18.3	76.8	71.7	61.1	41.1	89.8	81.1	19.7
02/04/14	14.6	15.4	83.7	70.3	58.2	33.7	100.0	86.6	15.2



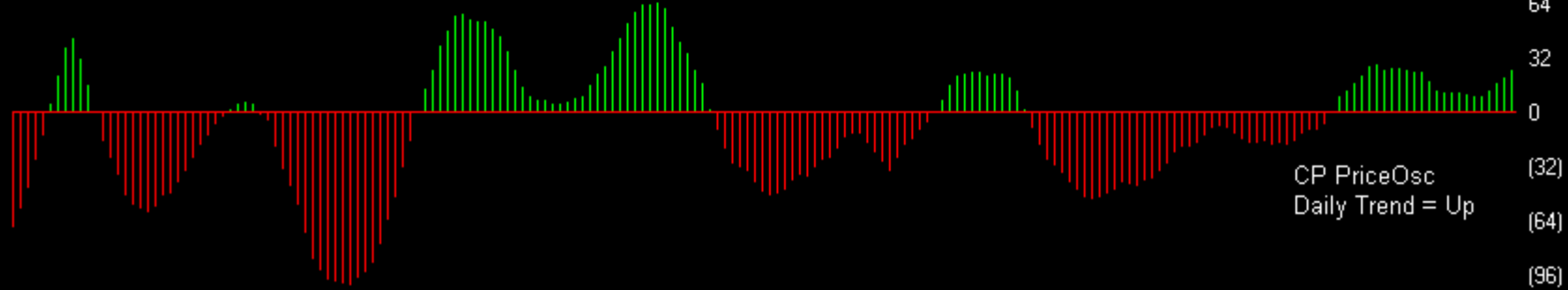
Gold

Charts by AIQ TradingExpert

STREETTRACKS GOLD TRUST ETF (Daily) (GLD)



CP PriceOsc

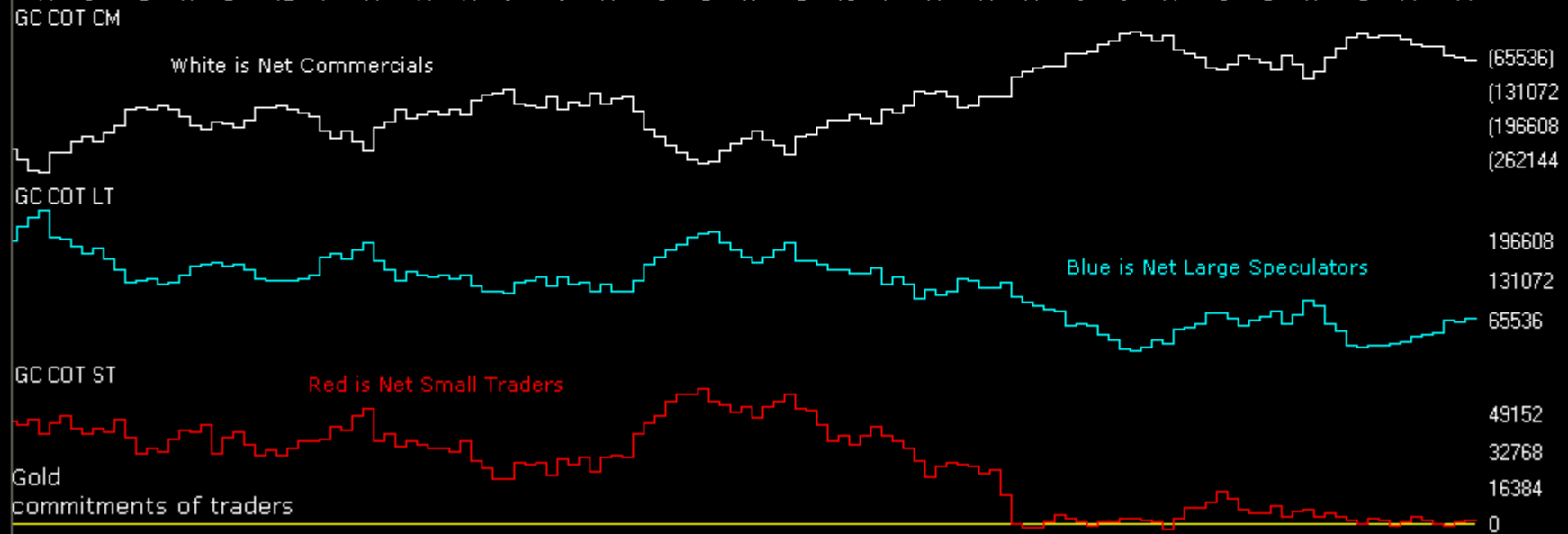
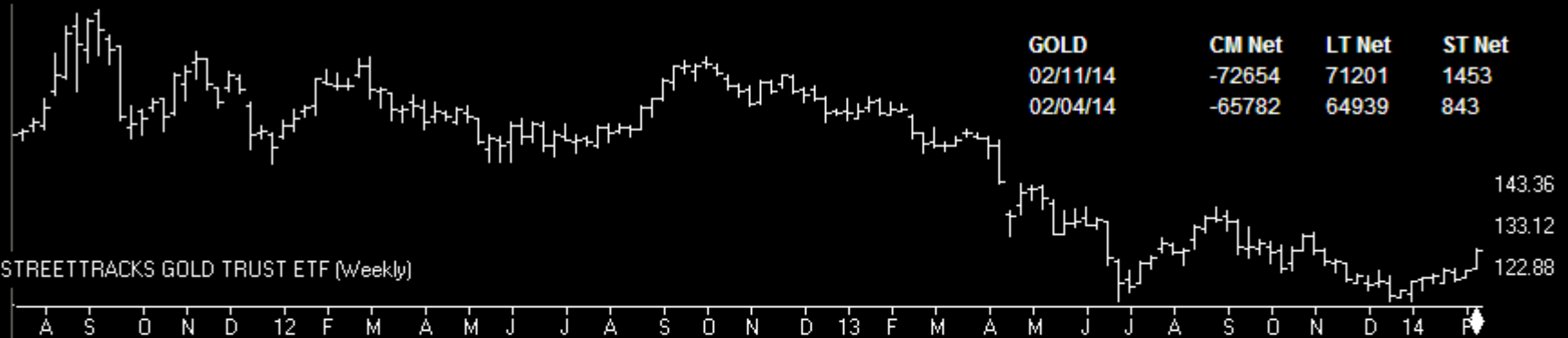


Gold

Charts by AIQ TradingExpert

GOLD	CM Net	CM Long	CM Short	LT Net	LT Long	LT Short	ST Net	ST Long	ST Short
02/11/14	40.4	0	41.2	62.6	100	59	18	30.8	69.5
02/04/14	48.5	0	43.9	54.5	100	57.5	14.1	0	48.1

GOLD	CM Net	LT Net	ST Net
02/11/14	-72654	71201	1453
02/04/14	-65782	64939	843



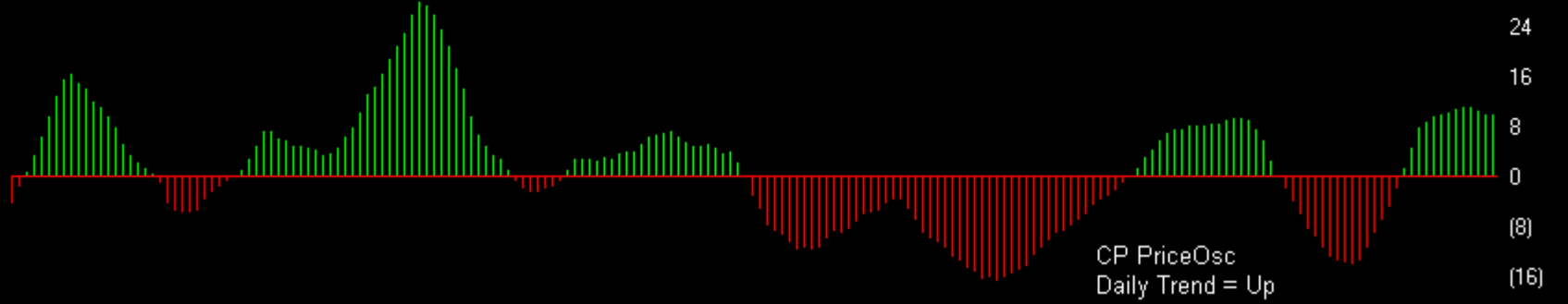
oil

Charts by AIQ TradingExpert

43 UNITED STATES OIL FUND (Daily) (USO)



CP PriceOsc



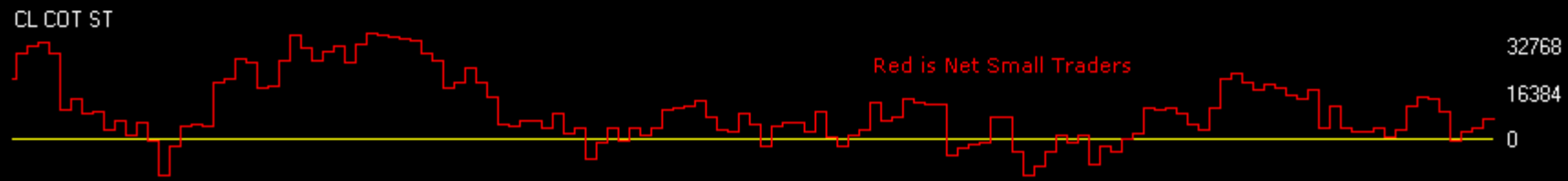
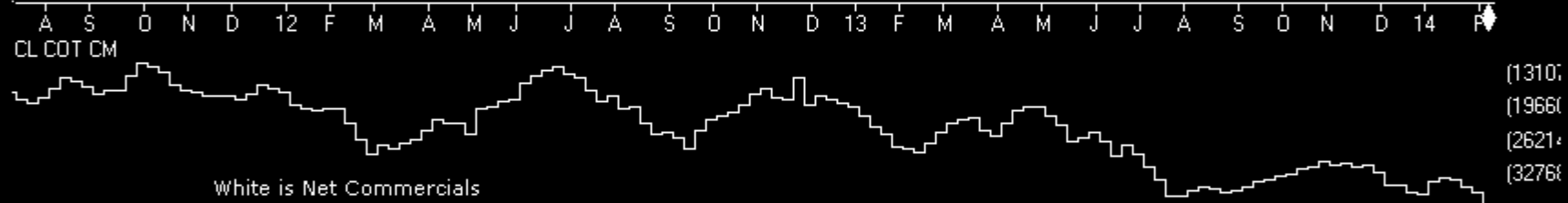
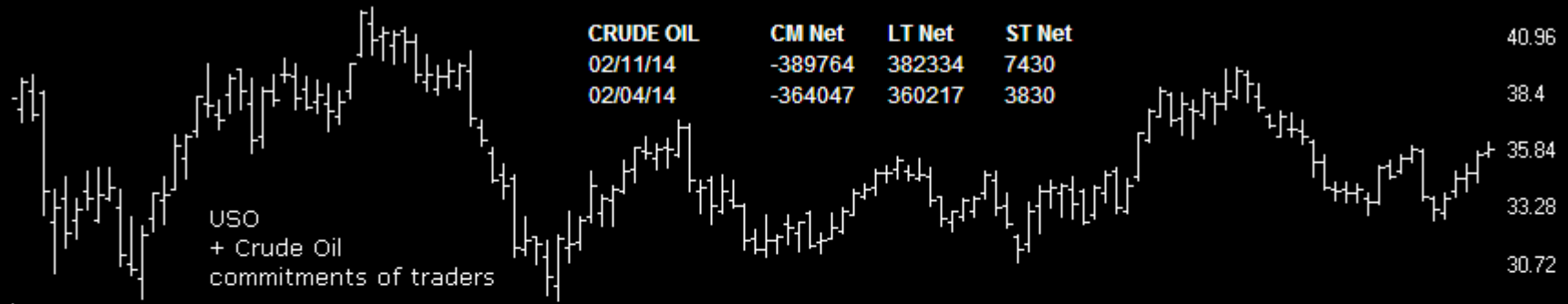
CP PriceOsc
Daily Trend = Up

Oil

Charts by AIQ TradingExpert

CRUDE OIL	CM Net	CM Long	CM Short	LT Net	LT Long	LT Short	ST Net	ST Long	ST Short
02/11/14	0.0	0.0	44.5	100.0	91.0	18.1	34.0	100.0	100.0
02/04/14	9.7	0.0	66.5	100.0	100.0	48.4	18.7	79.7	98.0

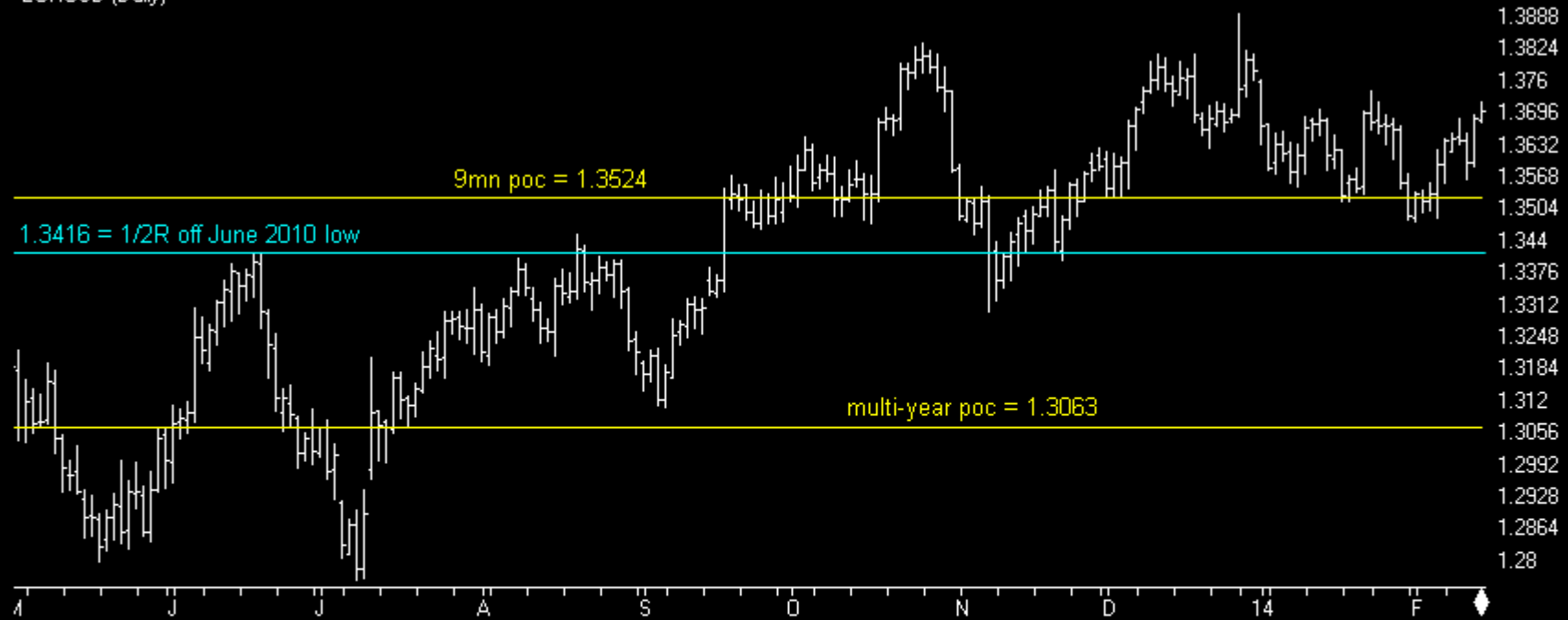
CRUDE OIL	CM Net	LT Net	ST Net	
02/11/14	-389764	382334	7430	40.96
02/04/14	-364047	360217	3830	38.4



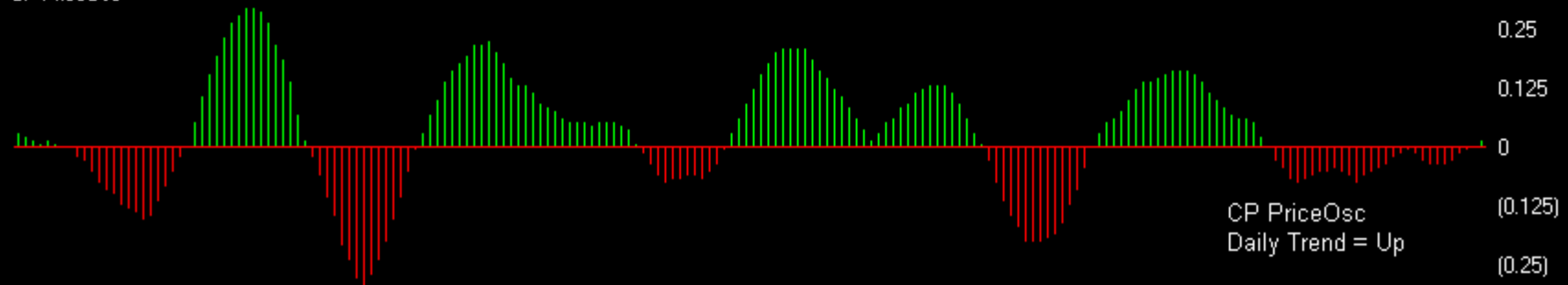
Dollar

Charts by AIQ TradingExpert

EURUSD (Daily)



CP PriceOsc

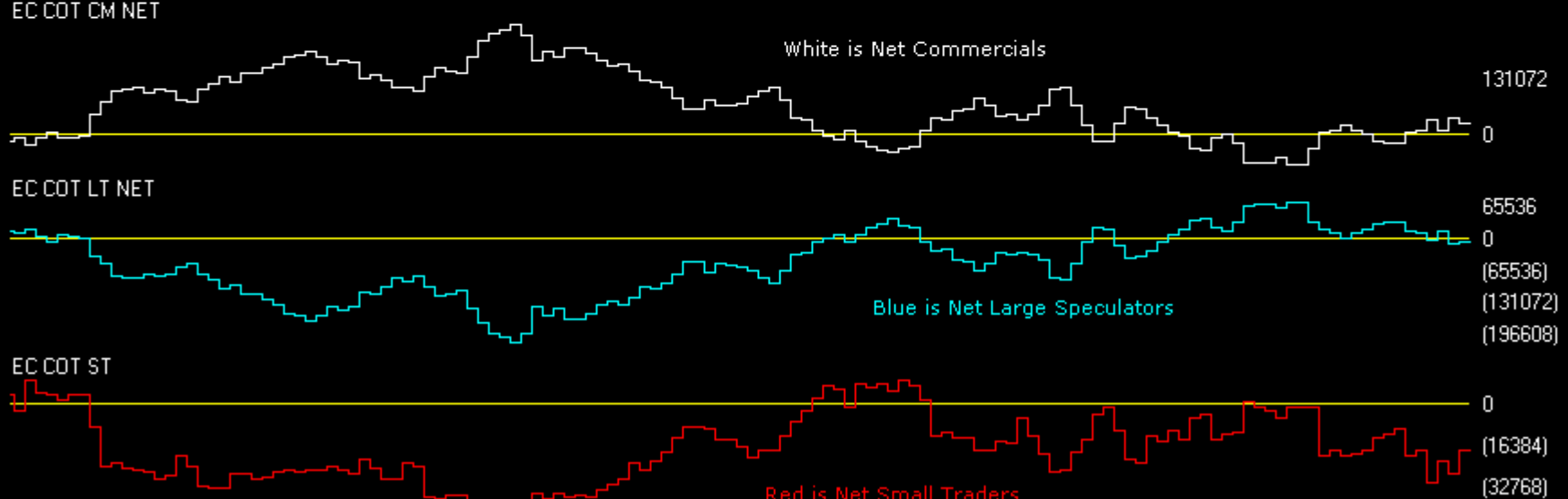
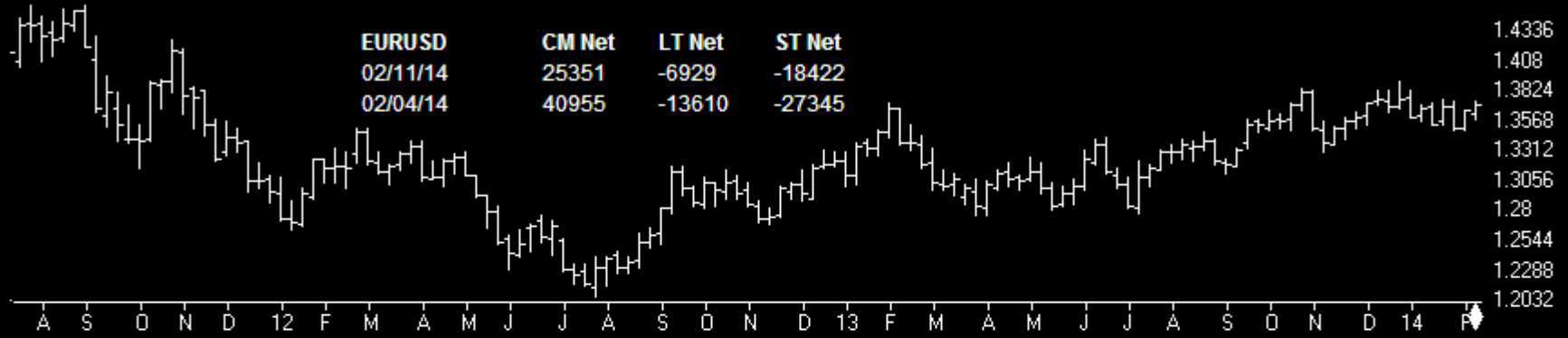


CP PriceOsc
Daily Trend = Up

Dollar

Charts by AIQ TradingExpert

EURUSD	CM Net	CM Long	CM Short	LT Net	LT Long	LT Short	ST Net	ST Long	ST Short
02/11/14	86.0	91.1	51.2	7.8	7.7	67.3	40.7	15.5	27.3
02/04/14	100.0	100.0	33.4	0.0	0.0	70.3	12.5	0.0	53.3

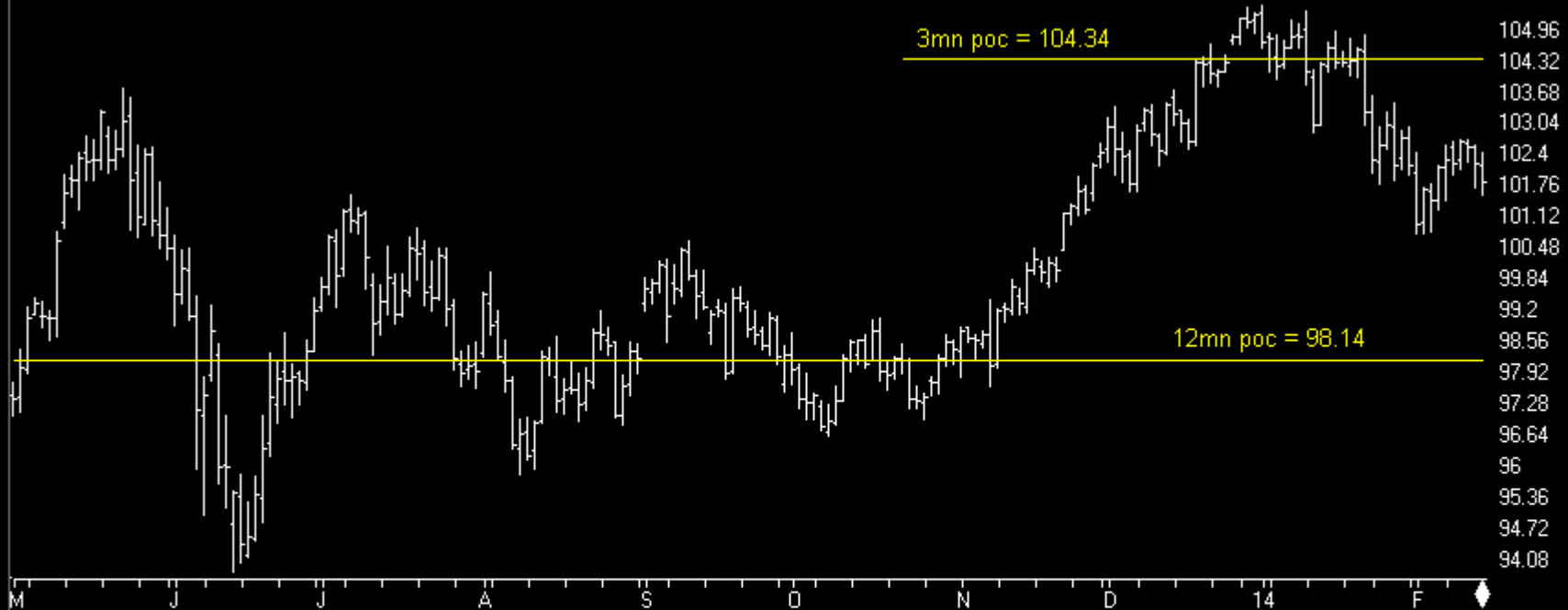


EURUSD (Weekly) commitments of traders

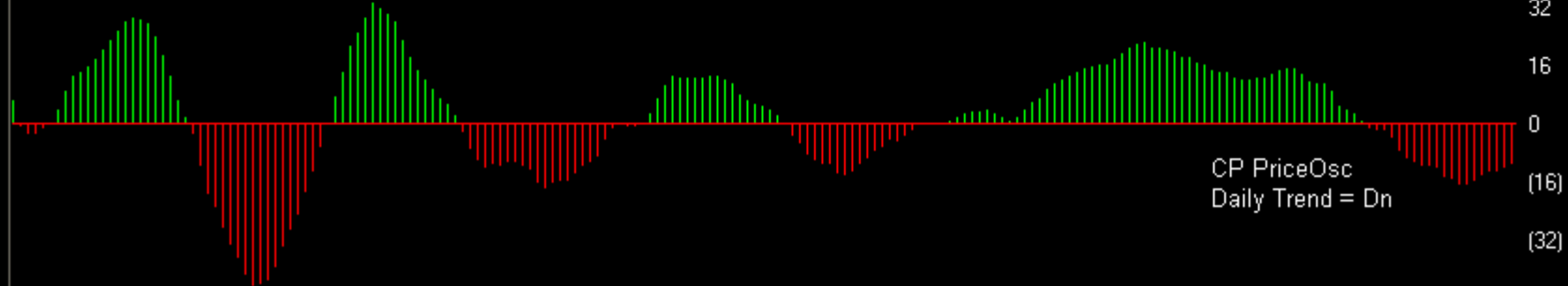
Dollar

Charts by AIQ TradingExpert

53 USDJPY (Daily)



CP PriceOsc



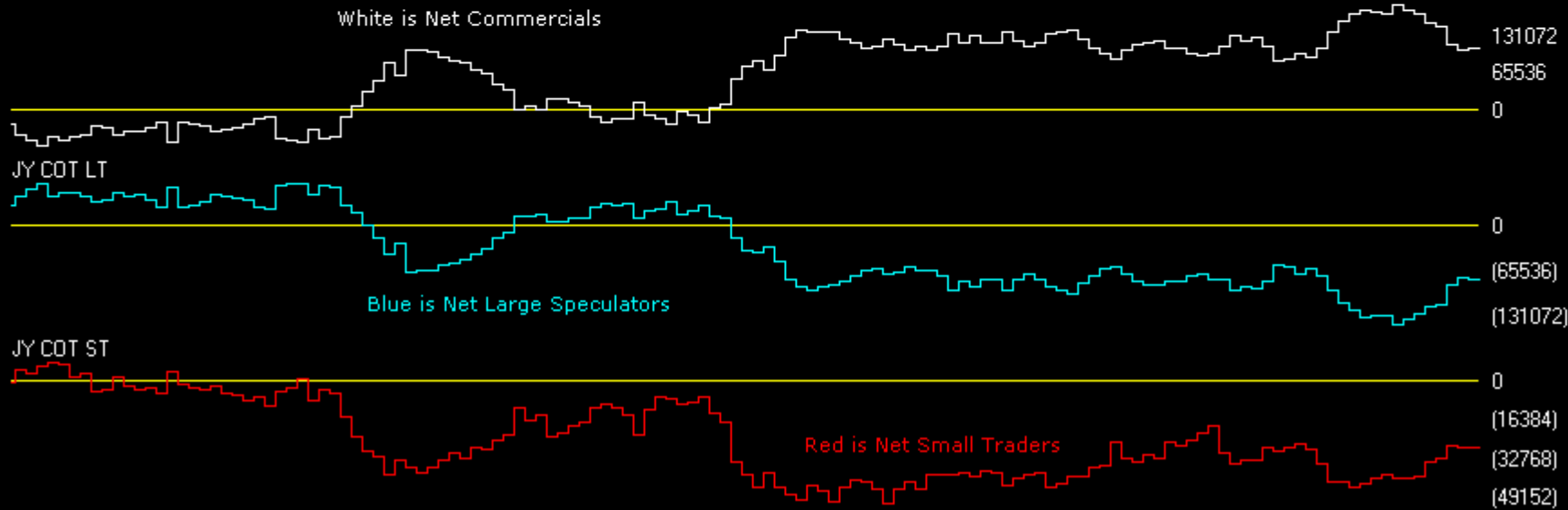
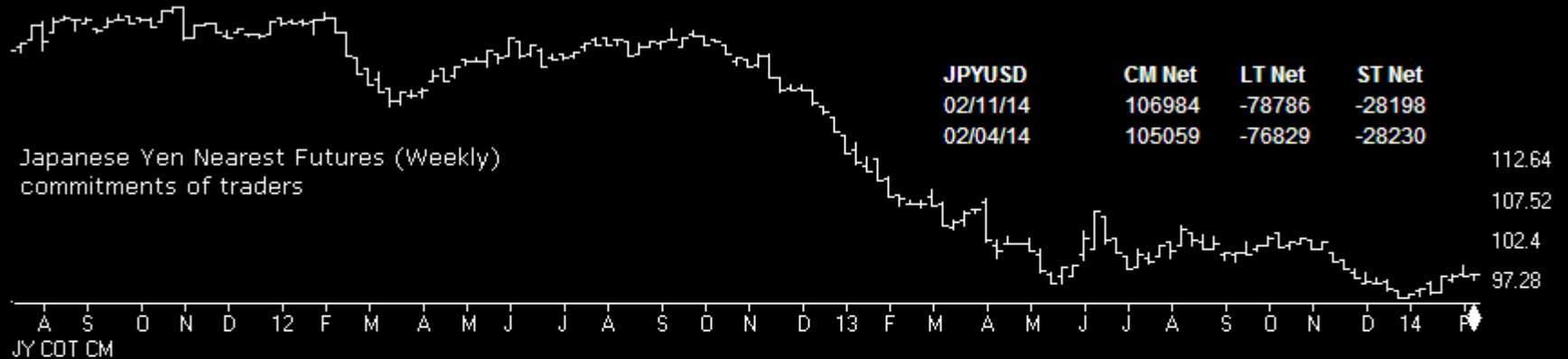
Dollar

Charts by AIQ TradingExpert

JPYUSD	CM Net	CM Long	CM Short	LT Net	LT Long	LT Short	ST Net	ST Long	ST Short
02/11/14	20.5	74.7	98.5	75.0	16.9	2.9	66.1	35.0	5.8
02/04/14	18.6	65.7	100.0	77.2	25.3	0.0	66.0	38.9	7.4

JPYUSD	CM Net	LT Net	ST Net
02/11/14	106984	-78786	-28198
02/04/14	105059	-76829	-28230

Japanese Yen Nearest Futures (Weekly) commitments of traders



Dollar

Charts by AIQ TradingExpert



US DOLLAR INDEX (Daily)

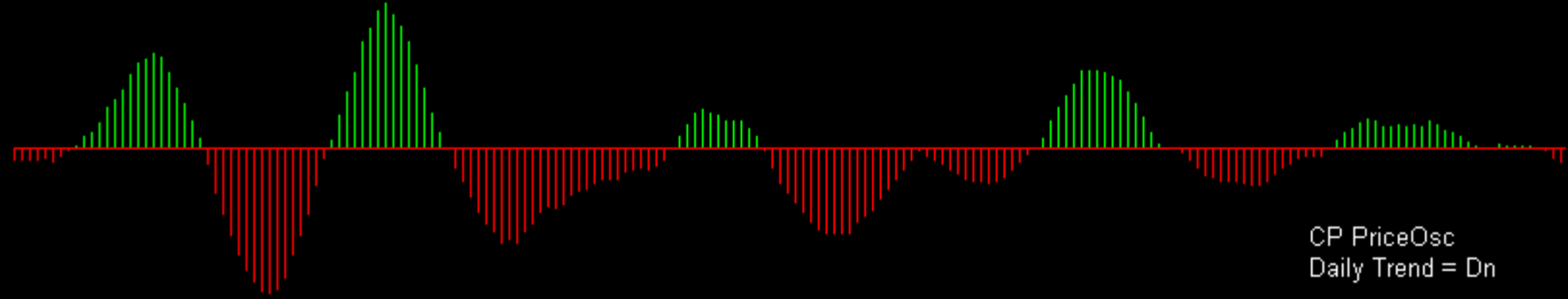
06/07/13 81.02

12/06: Chart needs to hold above 80.15 to maintain strong price location.



- 84.8
- 84.48
- 84.16
- 83.84
- 83.52
- 83.2
- 82.88
- 82.56
- 82.24
- 81.92
- 81.6
- 81.28
- 80.96
- 80.64
- 80.32
- 80
- 79.68
- 79.36
- 79.04

CP PriceOsc



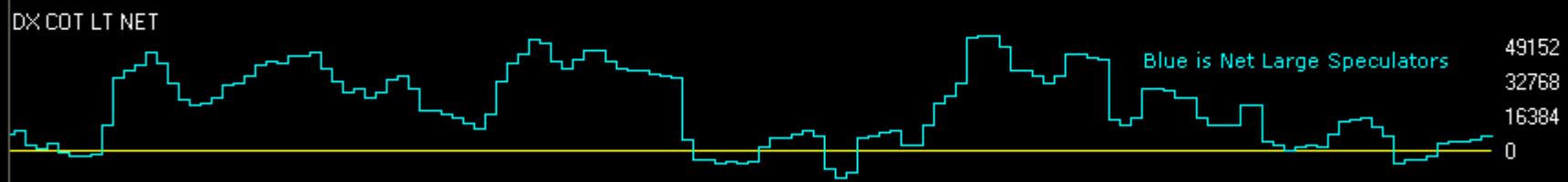
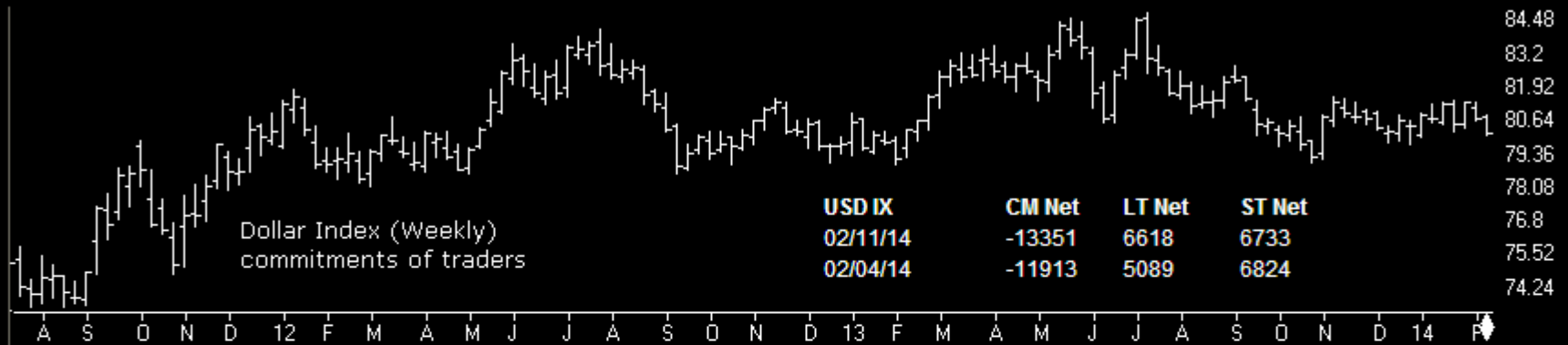
- 16
- 8
- 0
- (8)
- (16)

CP PriceOsc
Daily Trend = Dn

Dollar

Charts by AIQ TradingExpert

USD IX	CM Net	CM Long	CM Short	LT Net	LT Long	LT Short	ST Net	ST Long	ST Short
02/11/14	49.0	48.2	62.6	44.9	36.4	42.0	73.7	100.0	40.9
02/04/14	53.7	63.5	59.8	39.4	34.9	48.3	75.7	83.5	6.6



<http://www.chartprofitwebcast.com>