

# ChartProfit

**Charts to Friday 21st December 2018**

*Market Charts, Major ETFs*

*Market Sentiment Analysis*

## Stock Market Summary

### \*\*\*\*\* BREADTH

ChartProfit Breadth System - wk ending 12/21.

	-5	-4	-3	-2	↓
NYSE	29	45	26	22	9
NasDaq	26	41	21	19	7
SP500	28	53	25	22	6
R2000	29	41	24	20	8

number = % stocks >50day ma

### \*\*\*\*\* SENTIMENT

#### Consensus Polls:

12/21: AAll (public poll). Bulls% was higher this week at 24.9%. Previous week Bulls% fell to 20.9%, the lowest since June 2016. Bears% was lower this week at 47.3%. Previous week Bears% reached 48.9%, the highest since April 2013. The 4wm ma of nett (Bulls minus Bears) is at -12.15, the lowest since Feb 2016.

12/21: Investors Intelligence. Bulls% was lower at 39.3%. Bulls% fell to 38.3% three weeks ago, the lowest since May 2016. During/after the market sell-off earlier this year, Bulls% only got as low as 42.2%. Bear% was higher at 21.4%. The nett (Bulls minus Bears) is at 17.9 but fell to 17.7 three weeks ago, the lowest since November 2016.

12/21: The NAAIM Exposure Index is lower this week at 31.96. Four weeks ago it fell to 30.55 which was the lowest reading since February 2016.

#### Mutual Fund Flow:

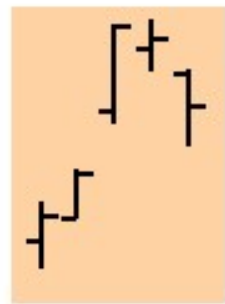
12/21: My version of the Rydex Assets Ratio ended the week at 6.75, a two year low. Down from 27.5 in early September. Bear fund assets that I follow spiked to their highest level since July 2016.

12/21: lipperusfundflows reported Equity Fund (inc ETF) outflows of -\$34.6 Billion in the week to 19th December. That is another massive outflow. Previous week's outflow was -\$46.2 Billion so together they amount to a net outflow over two weeks of -\$80.8 Billion which would be the largest. The 4wk flow number is now at -\$88.59 Billion, a new extreme (very) low.

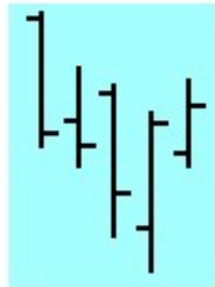
#### Options Ratios:

12/21: OCC\_Call% 10dy ma reached its lowest level since November 2016.

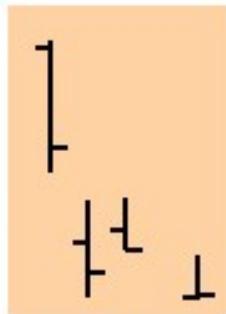
### SPY Weekly Structure



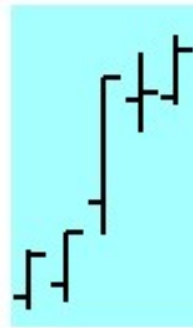
No Bias



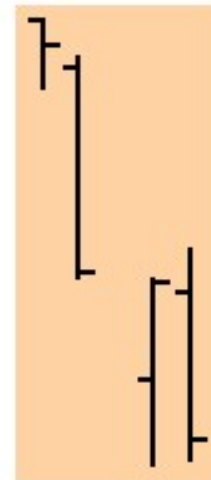
No Bias



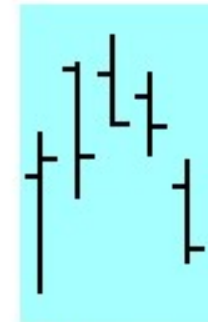
No Bias



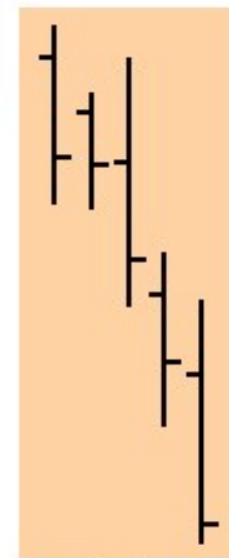
Buyers Active



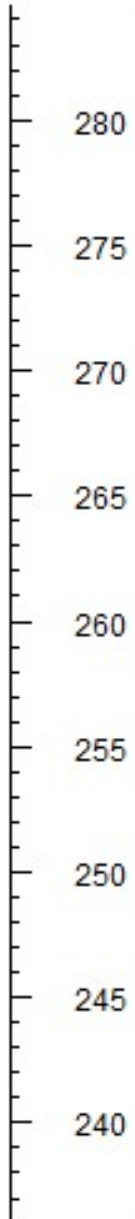
No Bias



No Bias



Sellers Active



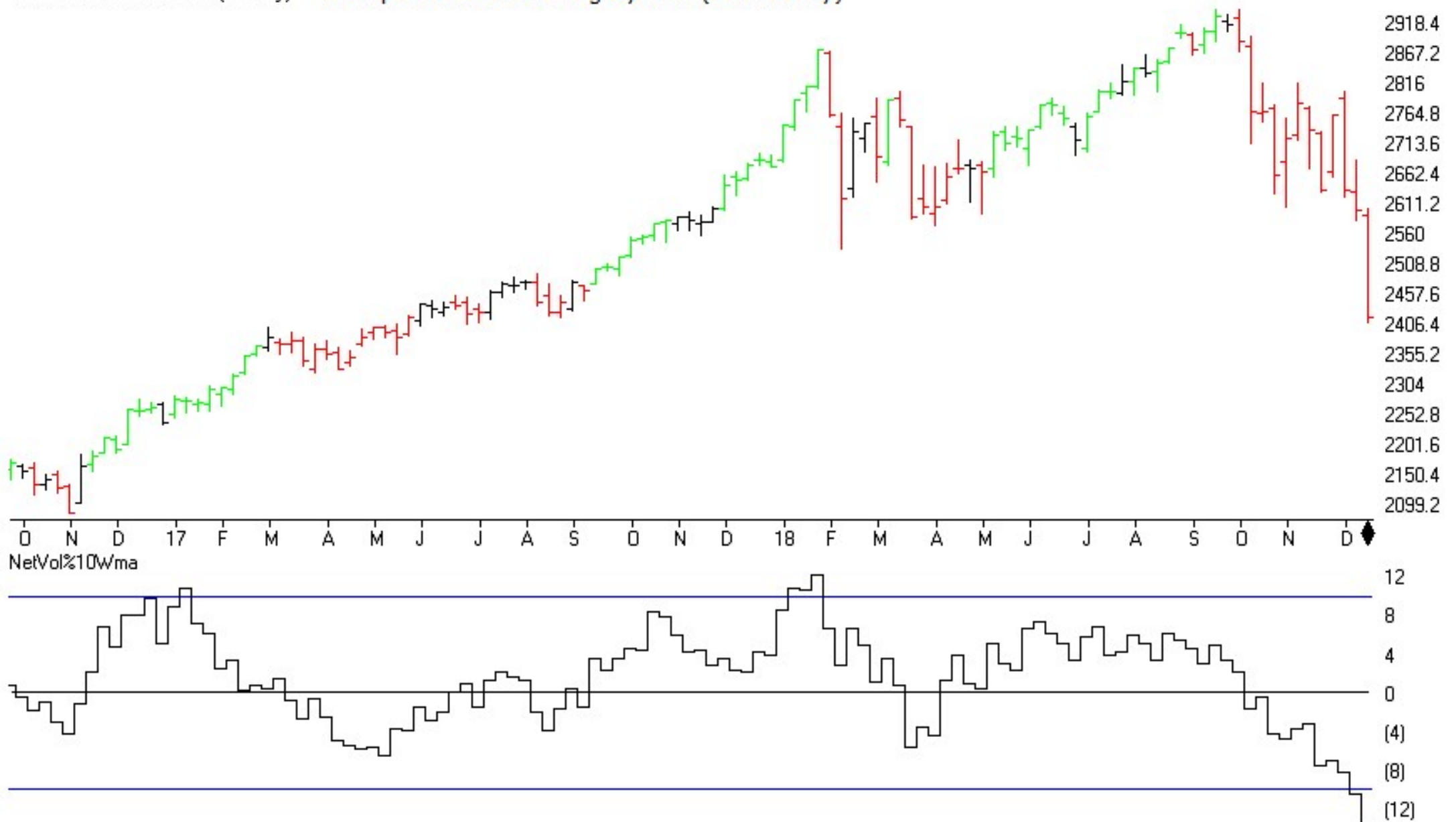
5	12	19	26	3	10	17	24
				December			

# Commitments of Traders

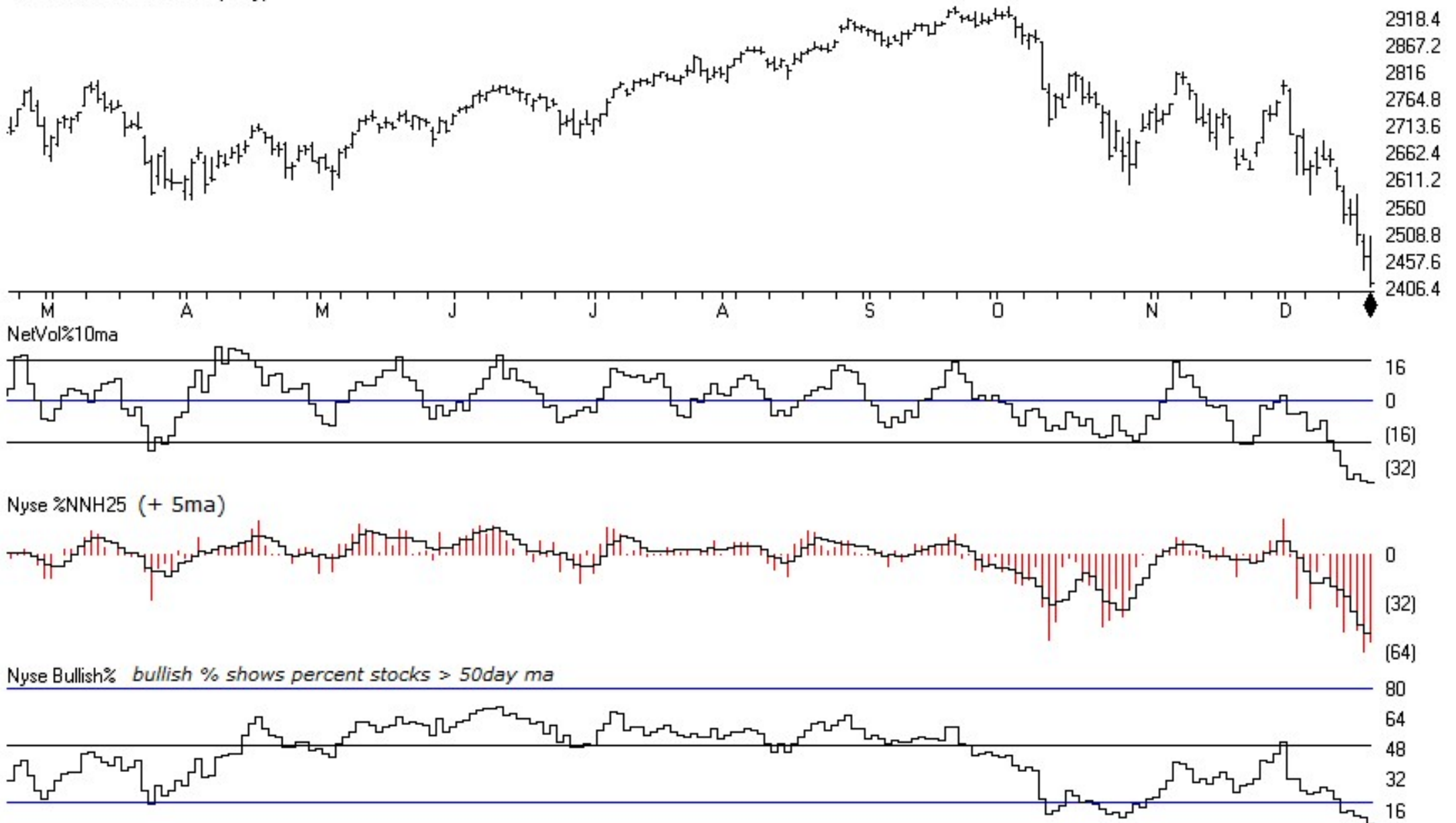
C.O.T.  
Quick  
View

SP500	CM Net	CM Long	CM Short	LT Net	LT Long	LT Short	ST Net	ST Long	ST Short
12/18/18	50.8	88.8	53.9	88.4	94.4	49.6	42.6	0.0	44.0
12/11/18	51.1	100.0	58.8	79.8	65.9	30.3	44.3	0.0	43.3
GOLD	CM Net	CM Long	CM Short	LT Net	LT Long	LT Short	ST Net	ST Long	ST Short
12/18/18	6.1	0	90.5	95.4	86.2	2.2	80.3	86.3	35.8
12/11/18	18.2	18.9	82.9	82.5	72.9	8.6	81.5	100	43.7
CRUDE OIL	CM Net	CM Long	CM Short	LT Net	LT Long	LT Short	ST Net	ST Long	ST Short
12/18/18	99.1	99.9	20.2	0.0	0.0	97.5	21.6	44.9	95.5
12/11/18	100.0	92.9	0.0	0.0	0.0	100.0	10.5	27.6	97.6
T-BONDS	CM Net	CM Long	CM Short	LT Net	LT Long	LT Short	ST Net	ST Long	ST Short
12/18/18	33.8	94.6	100.0	55.4	30.7	11.4	88.0	17.1	0.0
12/11/18	45.9	96.7	100.0	49.0	27.7	16.9	62.1	17.9	0.0
GBPUSD	CM Net	CM Long	CM Short	LT Net	LT Long	LT Short	ST Net	ST Long	ST Short
12/18/18	63.8	92.5	43.4	32.1	2.7	53.6	42.0	24.2	45.5
12/11/18	39.8	66.3	91.4	61.3	35.6	7.5	38.7	11.2	16.7
JPYUSD	CM Net	CM Long	CM Short	LT Net	LT Long	LT Short	ST Net	ST Long	ST Short
12/18/18	78.1	100.0	80.8	15.3	2.4	56.5	77.7	19.4	3.2
12/11/18	76.2	94.2	58.7	21.7	0.0	40.5	55.3	51.0	53.9
EURUSD	CM Net	CM Long	CM Short	LT Net	LT Long	LT Short	ST Net	ST Long	ST Short
12/18/18	95.2	70.7	0.0	7.8	34.4	100.0	70.9	55.0	0.0
12/11/18	96.0	100.0	42.6	4.6	0.0	48.5	80.1	93.2	100.0
USD IX	CM Net	CM Long	CM Short	LT Net	LT Long	LT Short	ST Net	ST Long	ST Short
12/18/18	23.6	14.5	99.1	80.0	100.0	9.6	7.7	8.1	17.0
12/11/18	14.5	100.0	77.4	89.3	0.0	6.7	2.0	9.5	100.0

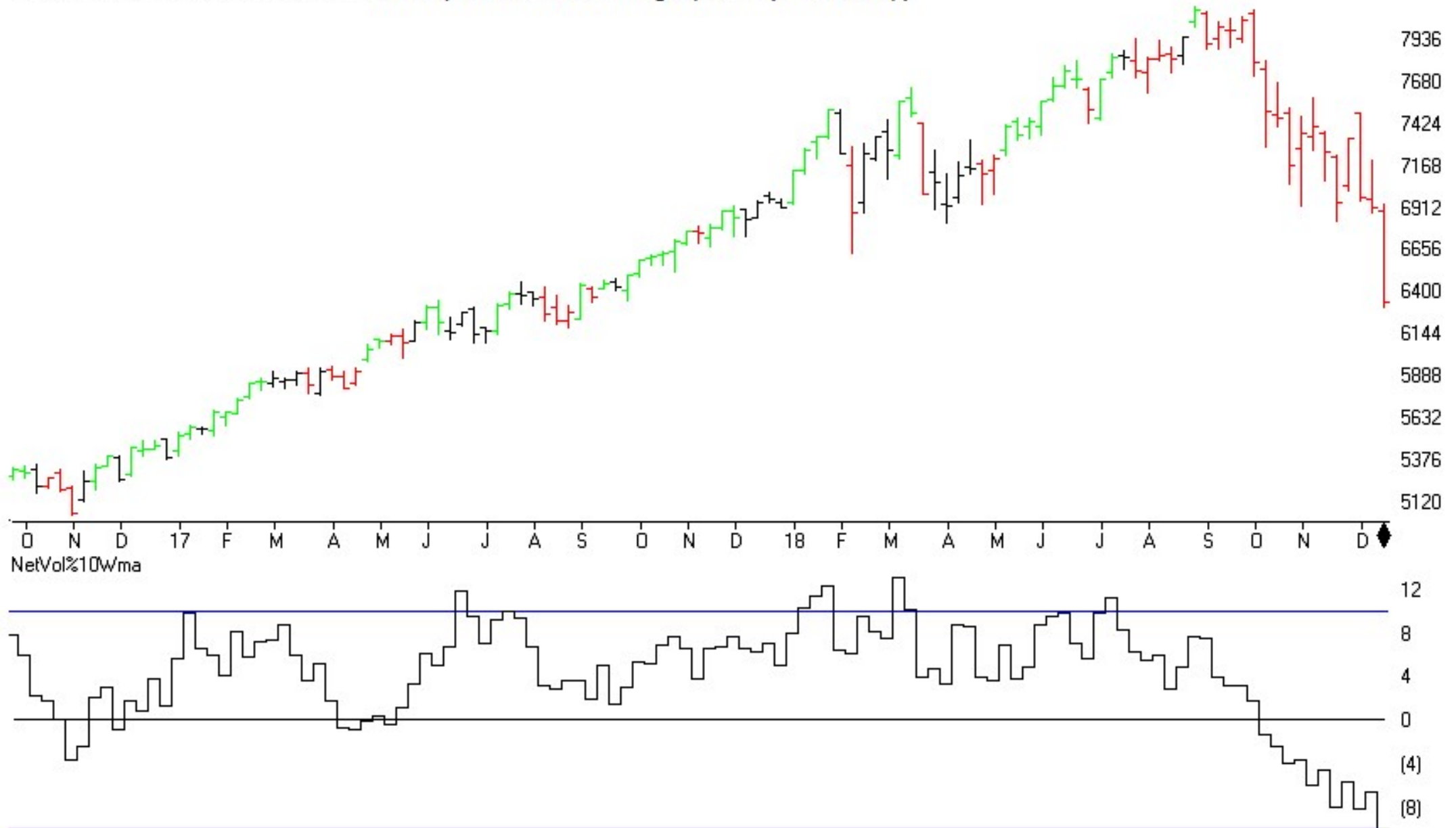
MARKET CHART NYSE (Weekly) + Chartprofit Market Timing System (color study)



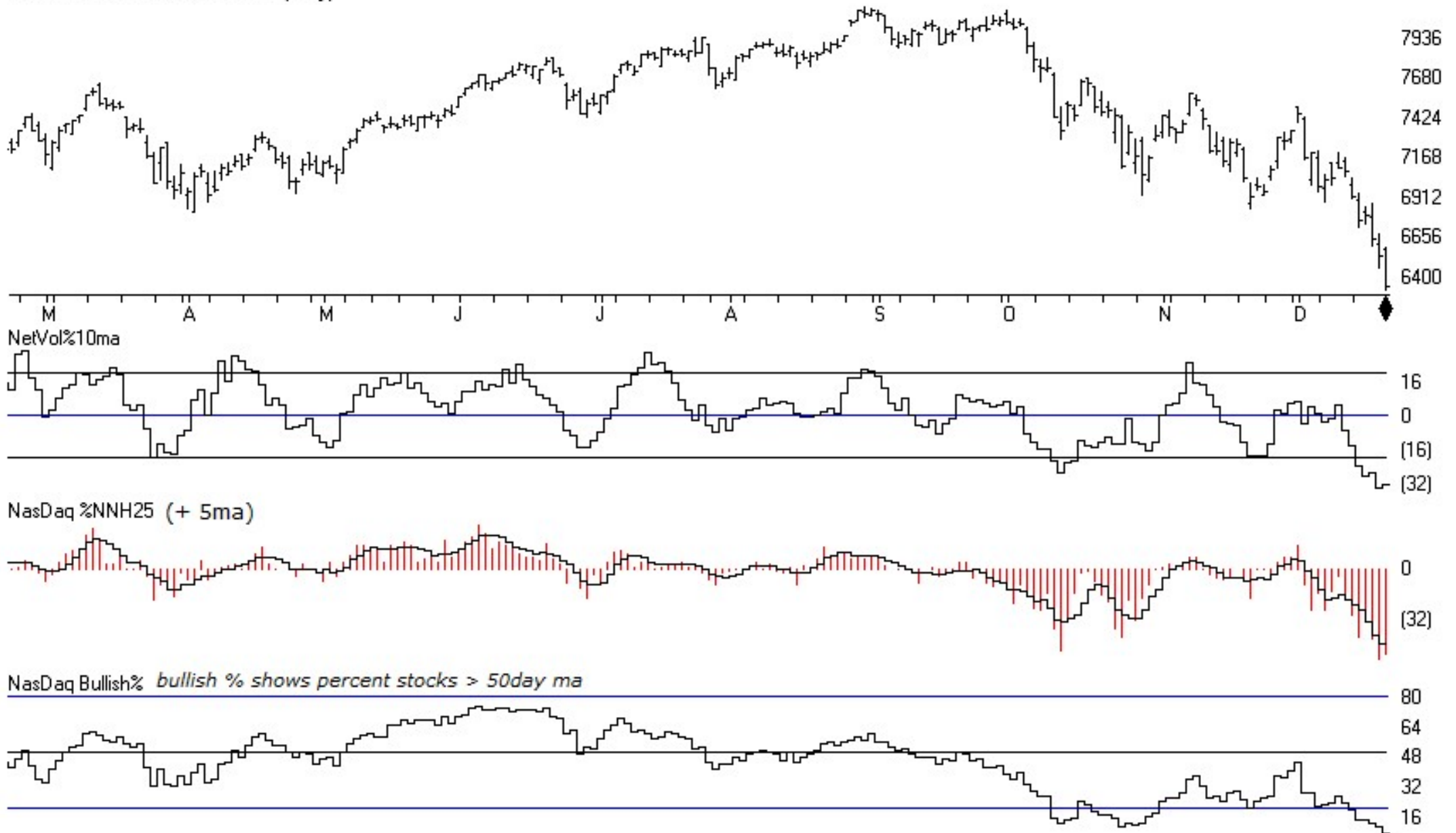
MARKET CHART NYSE (Daily)



MARKET CHART NASDAQ 1800 (Weekly)+ Chartprofit Market Timing System (color study)



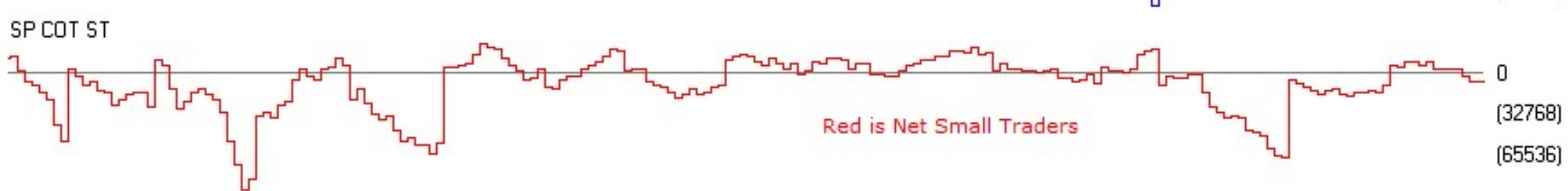
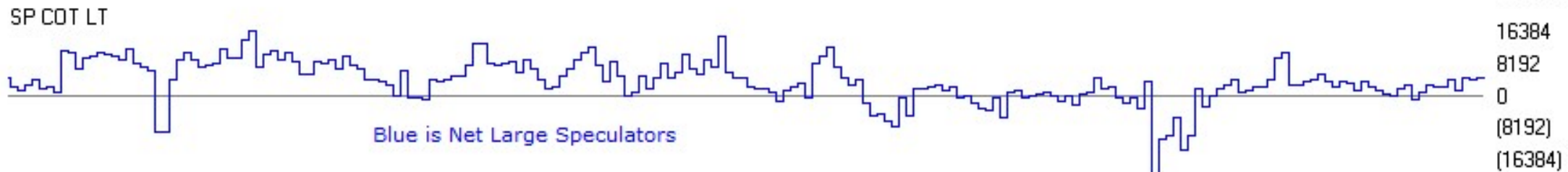
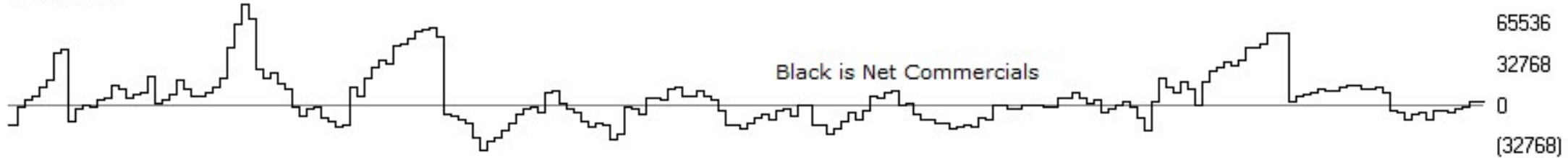
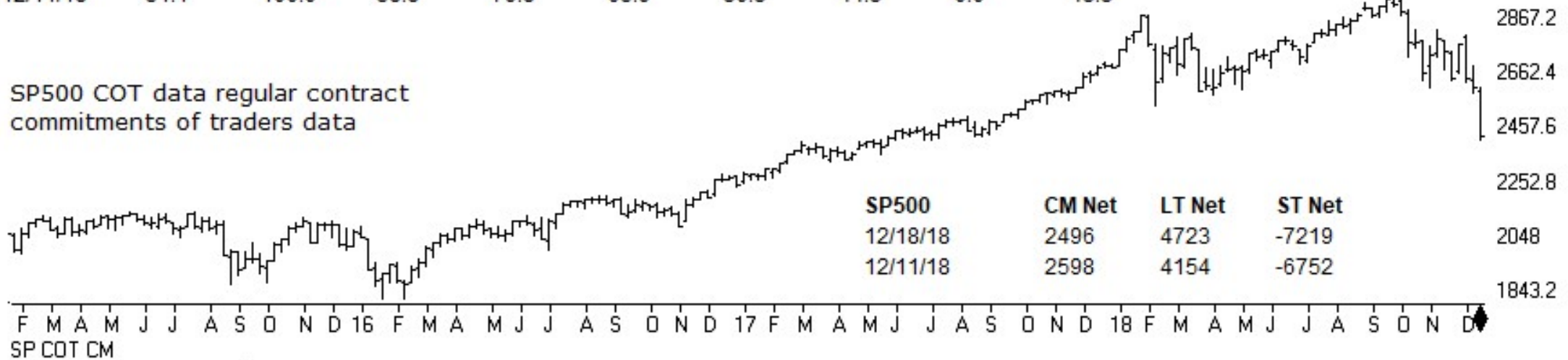
MARKET CHART NASDAQ 1800 (Daily)





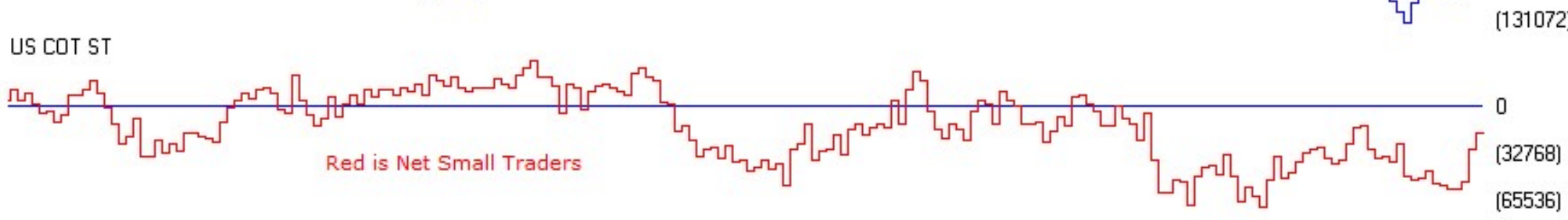
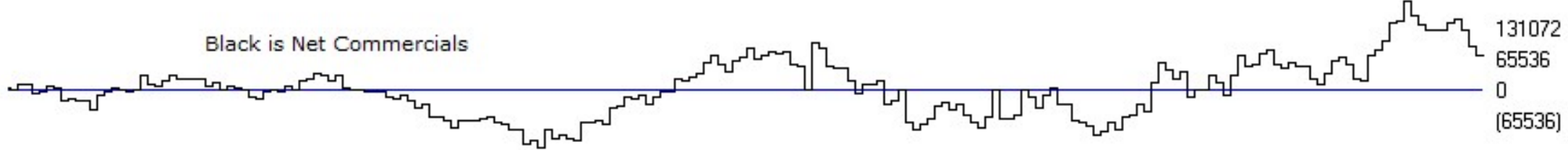
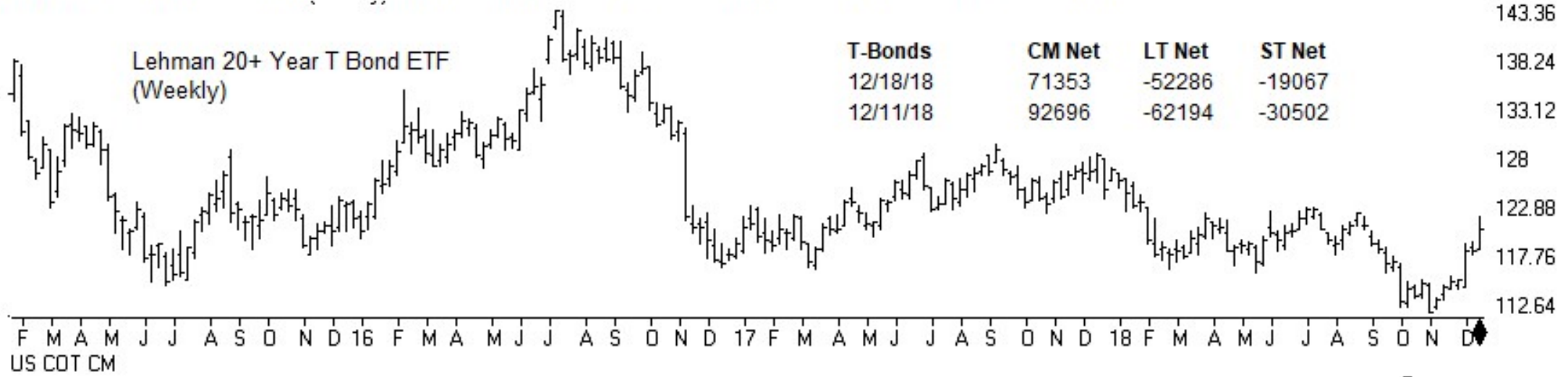
SP500	CM Net	CM Long	CM Short	LT Net	LT Long	LT Short	ST Net	ST Long	ST Short
12/18/18	50.8	88.8	53.9	88.4	94.4	49.6	42.6	0.0	44.0
12/11/18	51.1	100.0	58.8	79.8	65.9	30.3	44.3	0.0	43.3

SP500 COT data regular contract commitments of traders data





T-BONDS	CM Net	CM Long	CM Short	LT Net	LT Long	LT Short	ST Net	ST Long	ST Short
12/18/18	33.8	94.6	100.0	55.4	30.7	11.4	88.0	17.1	0.0
12/11/18	45.9	96.7	100.0	49.0	27.7	16.9	62.1	17.9	0.0



GOLD	CM Net	CM Long	CM Short	LT Net	LT Long	LT Short	ST Net	ST Long	ST Short
12/18/18	6.1	0	90.5	95.4	86.2	2.2	80.3	86.3	35.8
12/11/18	18.2	18.9	82.9	82.5	72.9	8.6	81.5	100	43.7

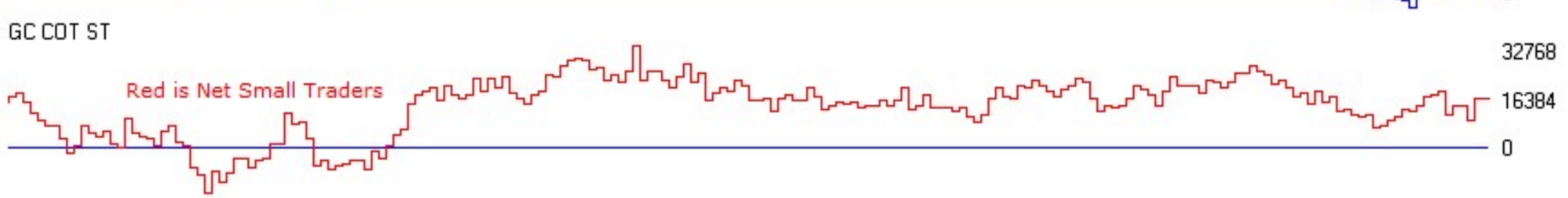
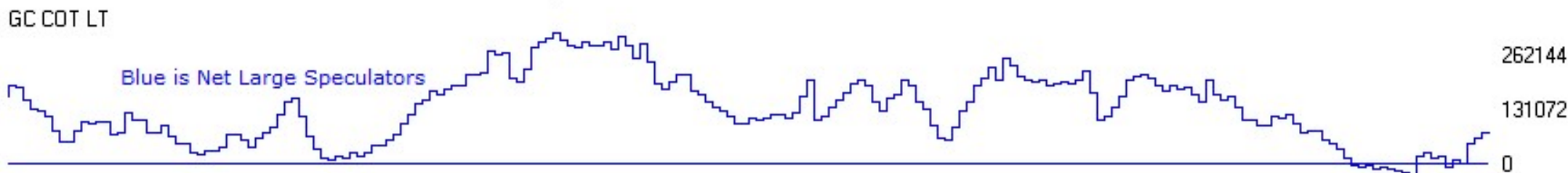
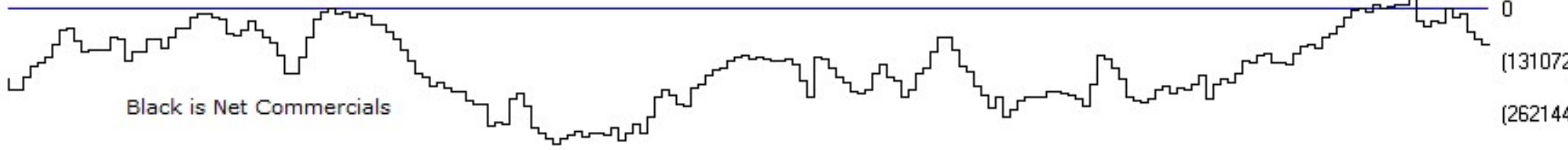
StreetTracks Gold Trust ETF (Weekly)



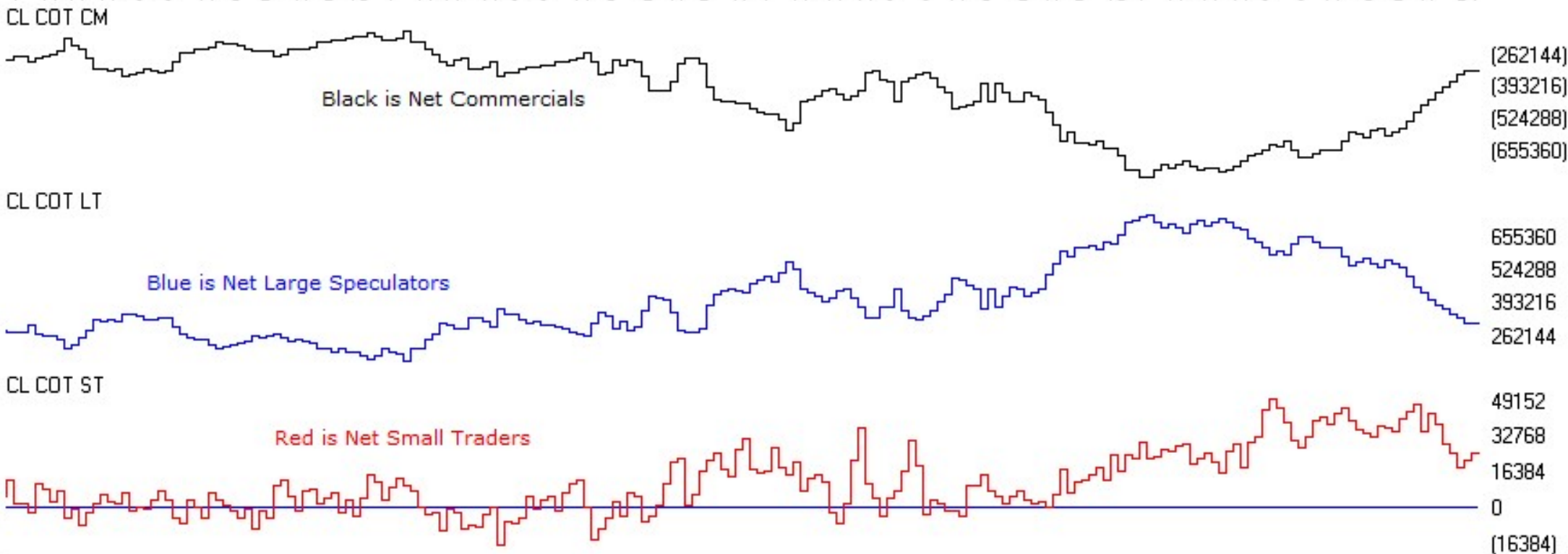
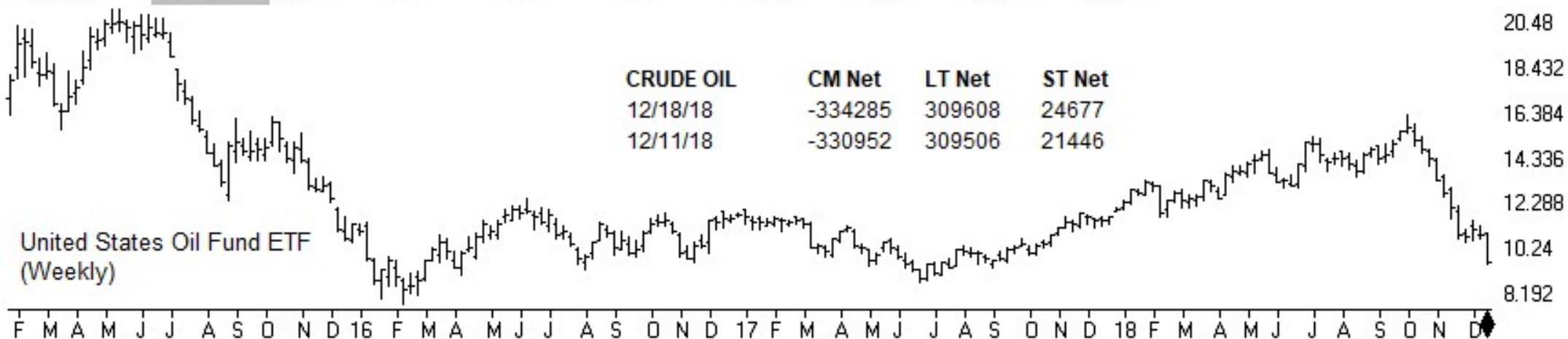
GOLD	CM Net	LT Net	ST Net
12/18/18	-92675	75960	16715
12/11/18	-77368	60499	16869

F M A M J J A S O N D 16 F M A M J J A S O N D 17 F M A M J J A S O N D 18 F M A M J J A S O N D

GC COT CM

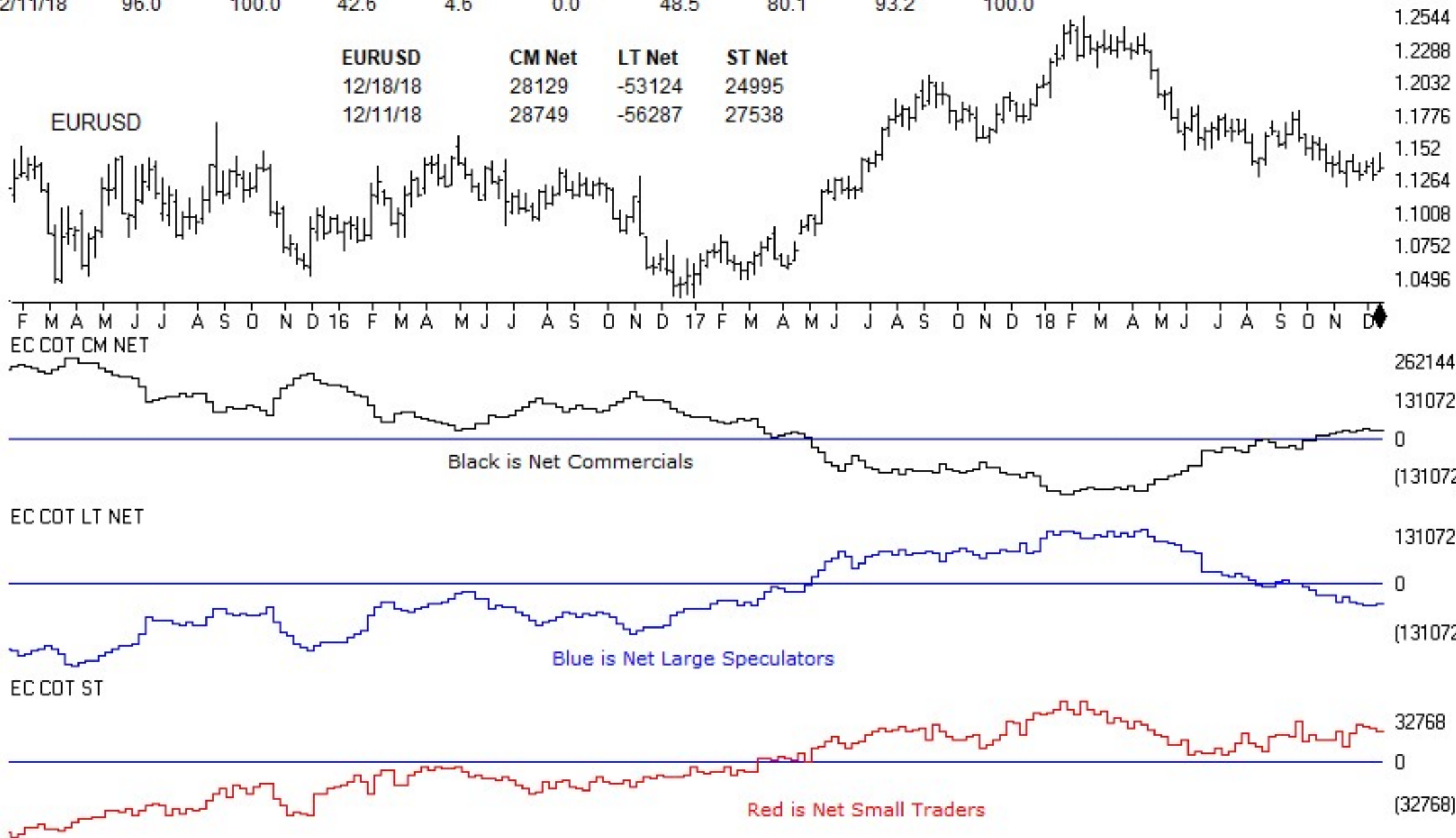


CRUDE OIL	CM Net	CM Long	CM Short	LT Net	LT Long	LT Short	ST Net	ST Long	ST Short
12/18/18	99.1	99.9	20.2	0.0	0.0	97.5	21.6	44.9	95.5
12/11/18	100.0	92.9	0.0	0.0	0.0	100.0	10.5	27.6	97.6



EURUSD	CM Net	CM Long	CM Short	LT Net	LT Long	LT Short	ST Net	ST Long	ST Short
12/18/18	95.2	70.7	0.0	7.8	34.4	100.0	70.9	55.0	0.0
12/11/18	96.0	100.0	42.6	4.6	0.0	48.5	80.1	93.2	100.0

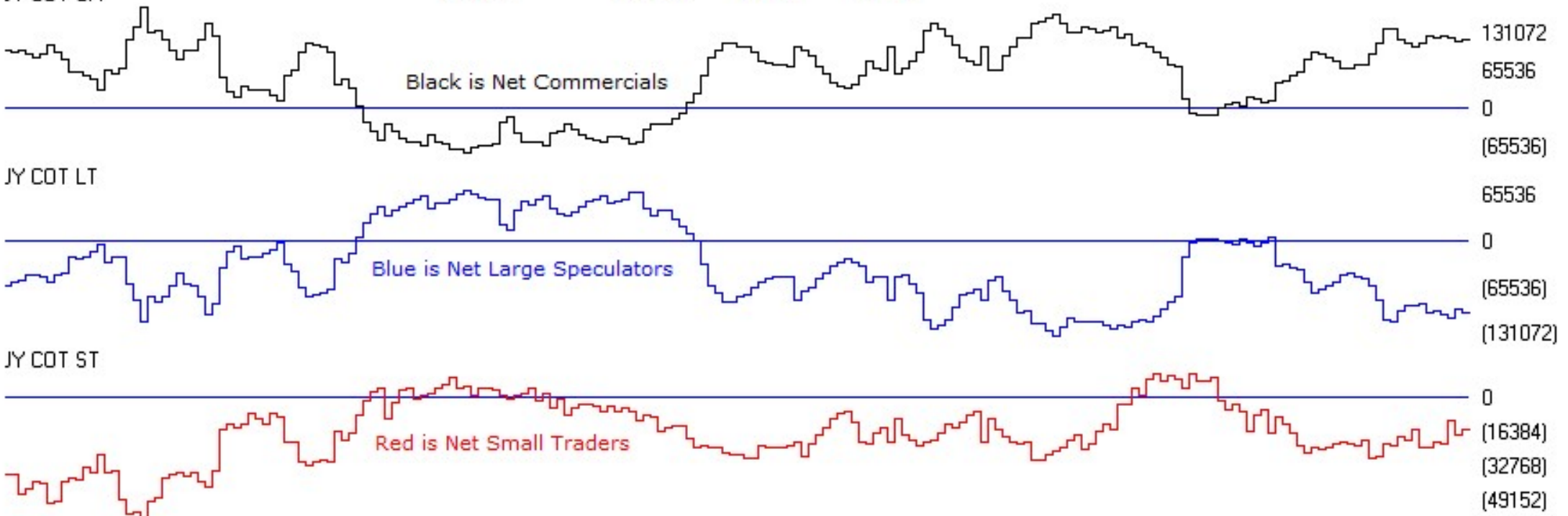
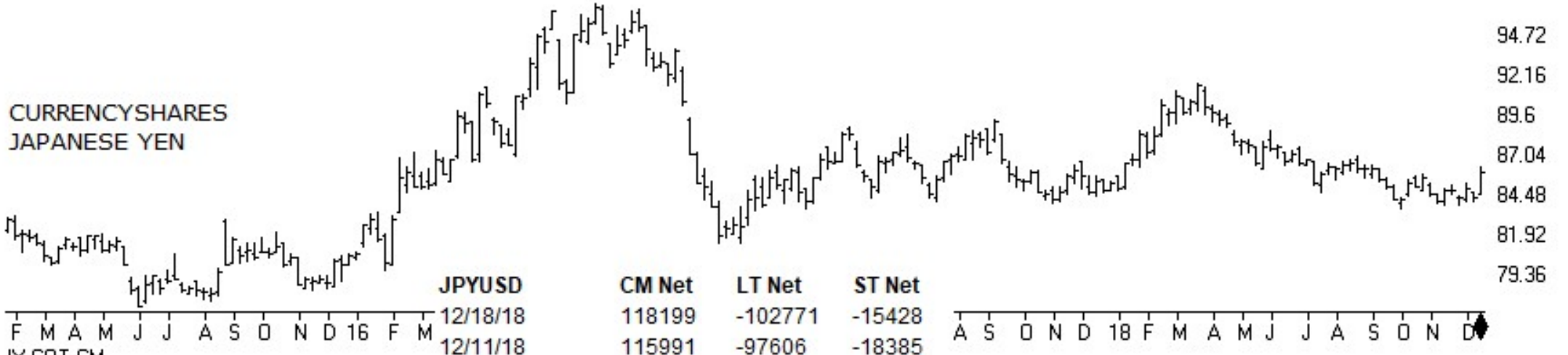
EURUSD	CM Net	LT Net	ST Net
12/18/18	28129	-53124	24995
12/11/18	28749	-56287	27538





JPYUSD	CM Net	CM Long	CM Short	LT Net	LT Long	LT Short	ST Net	ST Long	ST Short
12/18/18	78.1	100.0	80.8	15.3	2.4	56.5	77.7	19.4	3.2
12/11/18	76.2	94.2	58.7	21.7	0.0	40.5	55.3	51.0	53.9

CURRENCYSHARES  
JAPANESE YEN

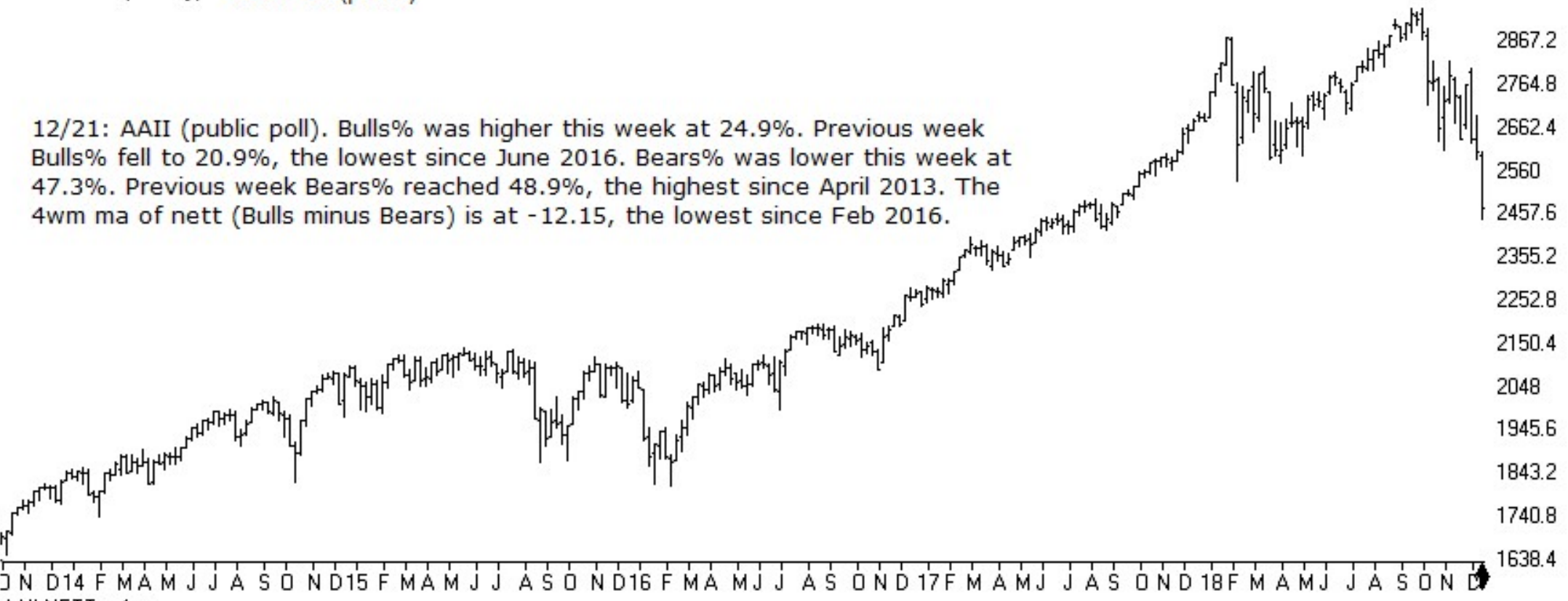


JY COT LT

JY COT ST

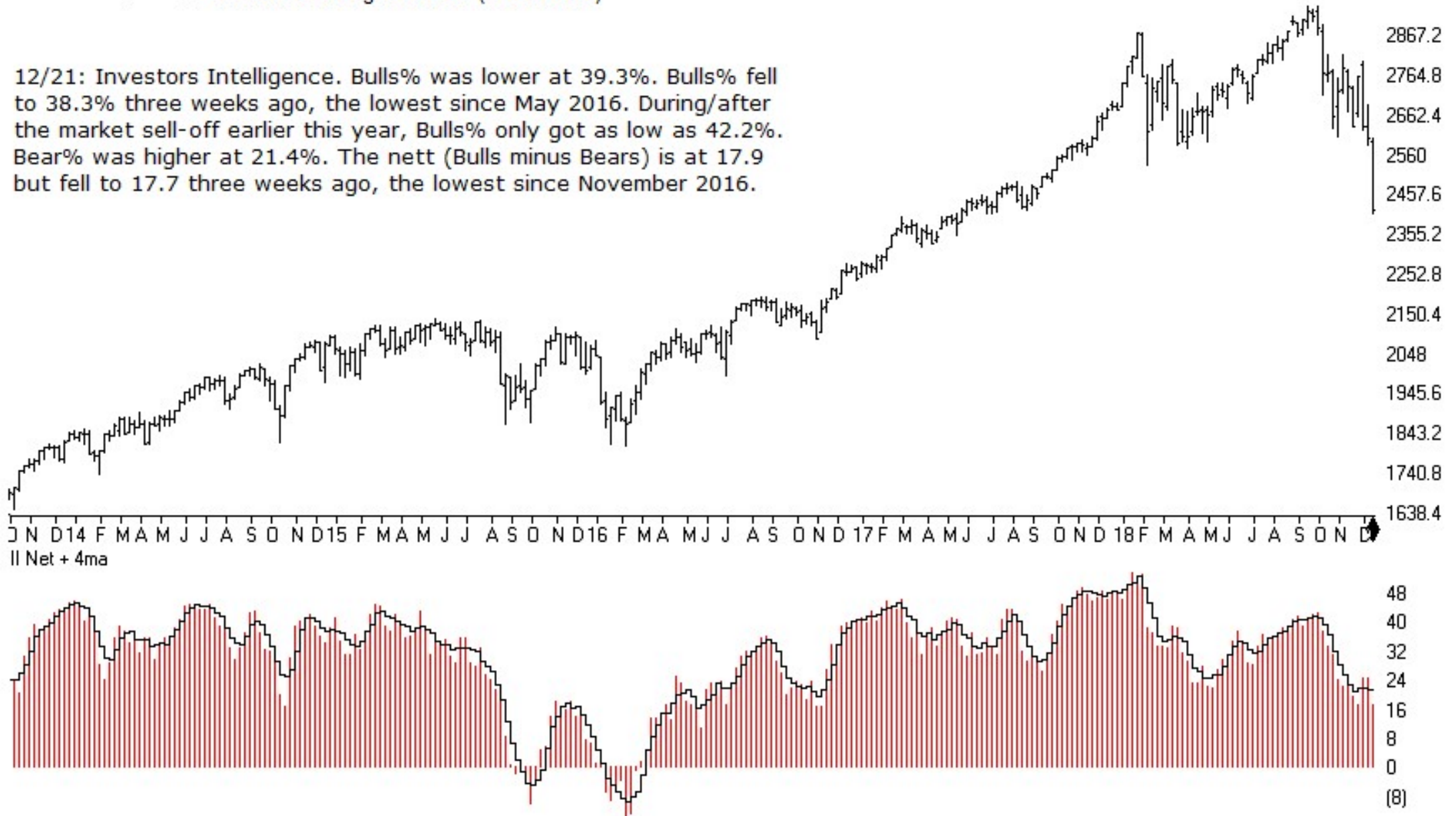
SP500 Index (Weekly) + AAI Poll (public)

12/21: AAI (public poll). Bulls% was higher this week at 24.9%. Previous week Bulls% fell to 20.9%, the lowest since June 2016. Bears% was lower this week at 47.3%. Previous week Bears% reached 48.9%, the highest since April 2013. The 4wm ma of nett (Bulls minus Bears) is at -12.15, the lowest since Feb 2016.



SP500 Index (Weekly) + Investors Intelligence Poll (newsletters)

12/21: Investors Intelligence. Bulls% was lower at 39.3%. Bulls% fell to 38.3% three weeks ago, the lowest since May 2016. During/after the market sell-off earlier this year, Bulls% only got as low as 42.2%. Bear% was higher at 21.4%. The nett (Bulls minus Bears) is at 17.9 but fell to 17.7 three weeks ago, the lowest since November 2016.

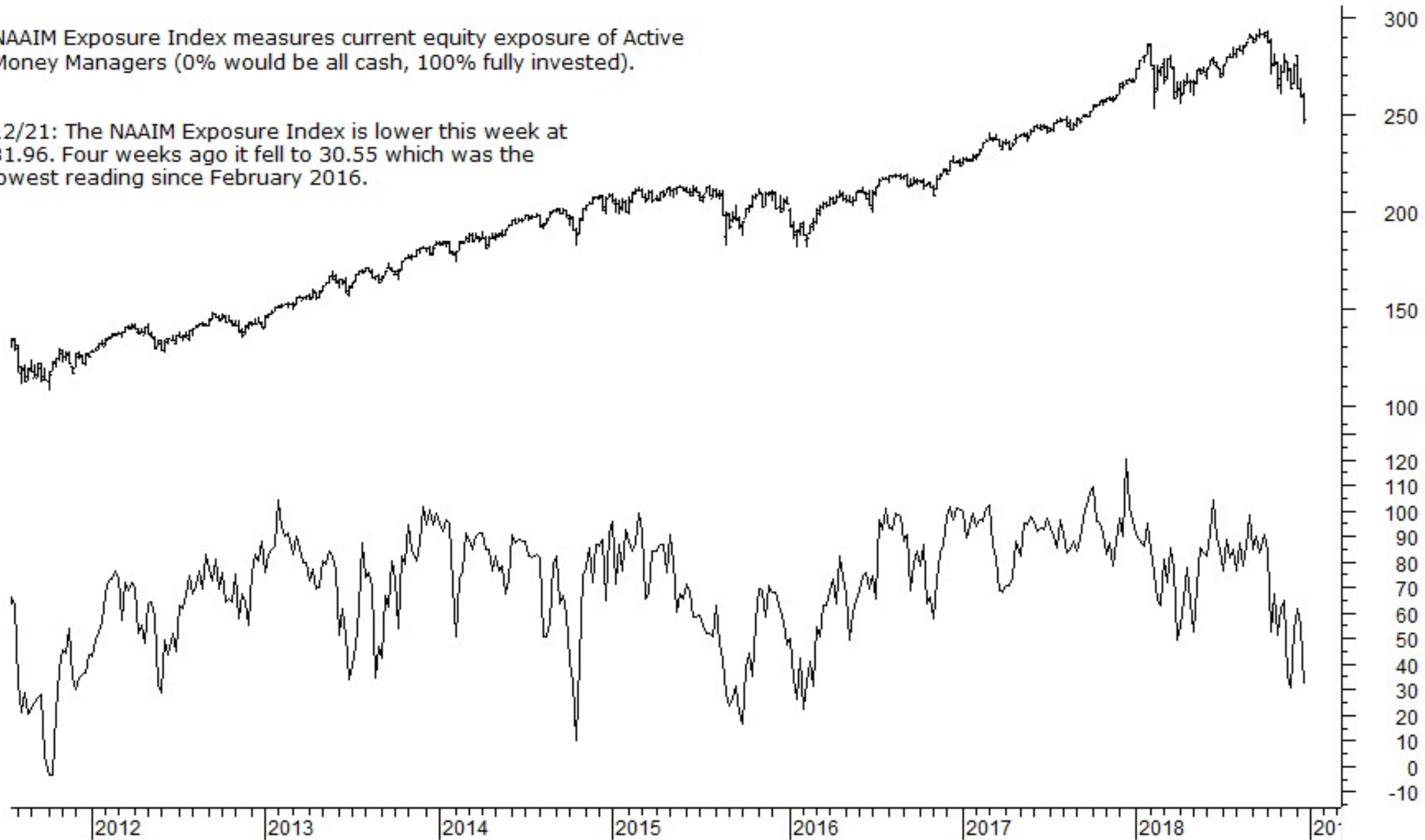




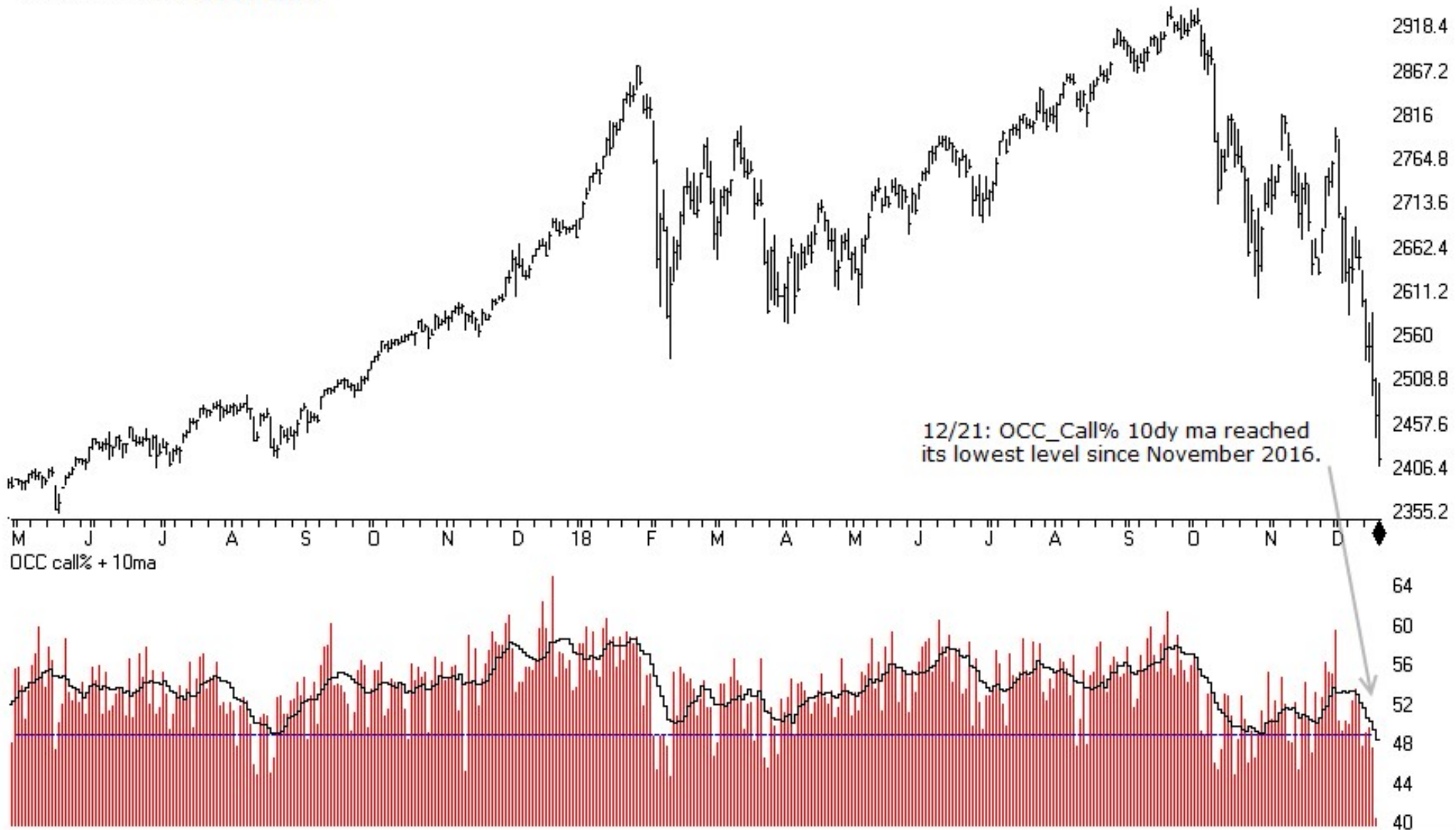
## SPY + NAAIM Exposure Index

NAAIM Exposure Index measures current equity exposure of Active Money Managers (0% would be all cash, 100% fully invested).

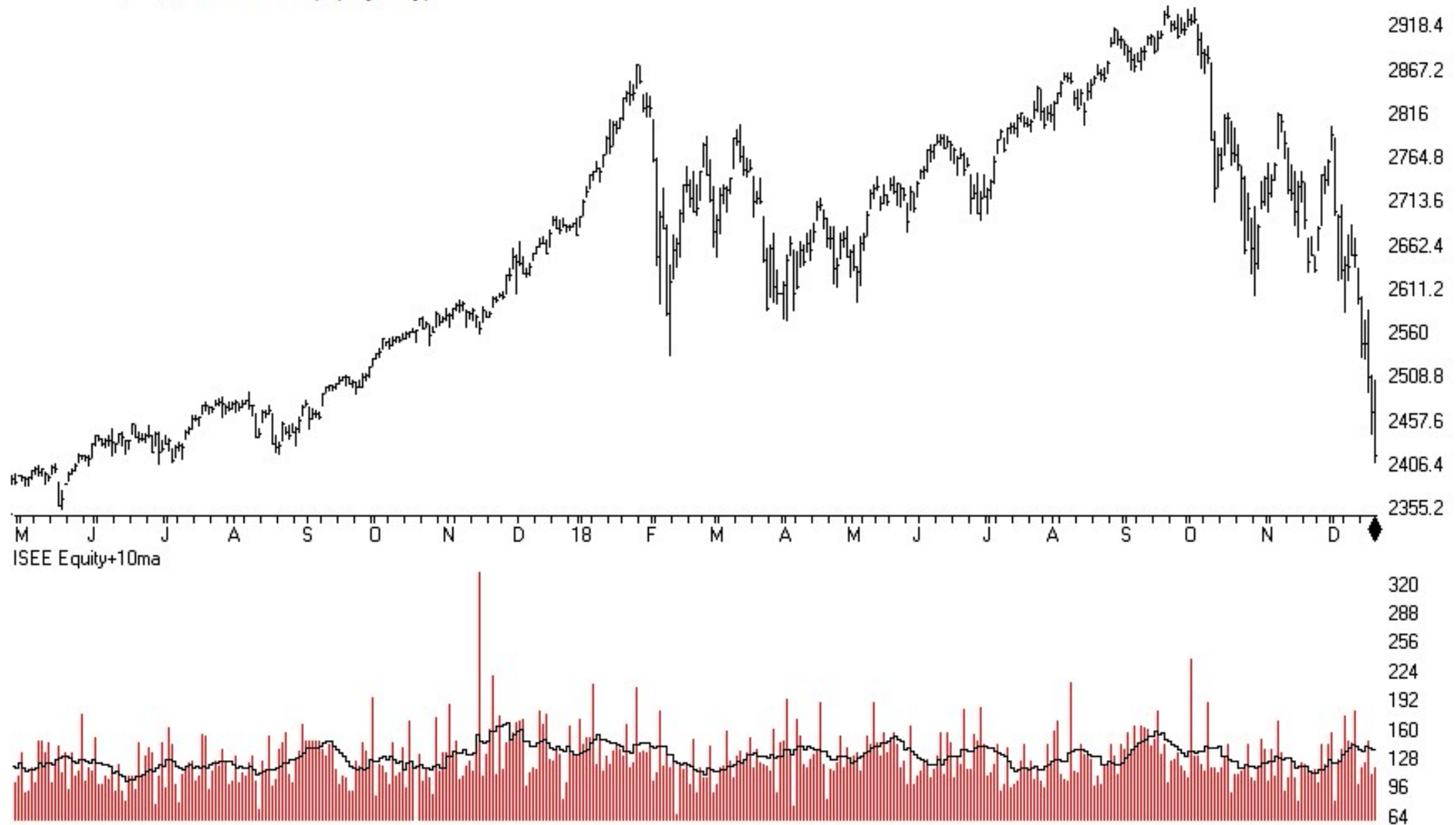
12/21: The NAAIM Exposure Index is lower this week at 31.96. Four weeks ago it fell to 30.55 which was the lowest reading since February 2016.



SP500 Index (Daily) + OCC Calls%



SP500 Index (Daily) + ISEE Index (equity only)



VIX - S&P 500 Volatility Index (Daily)

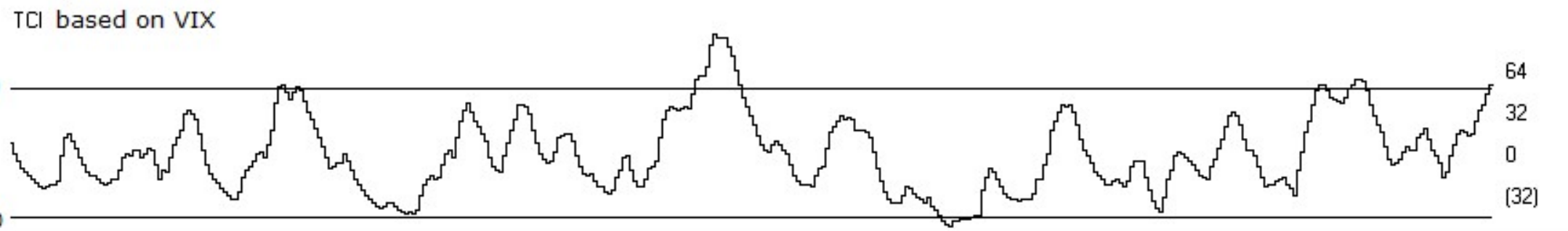
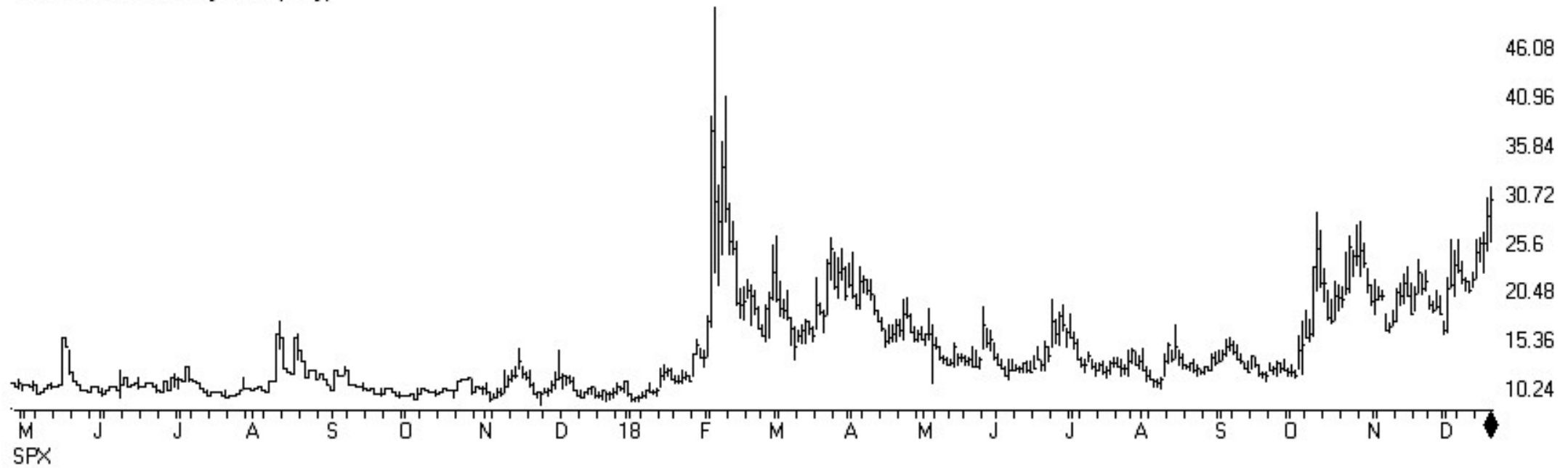
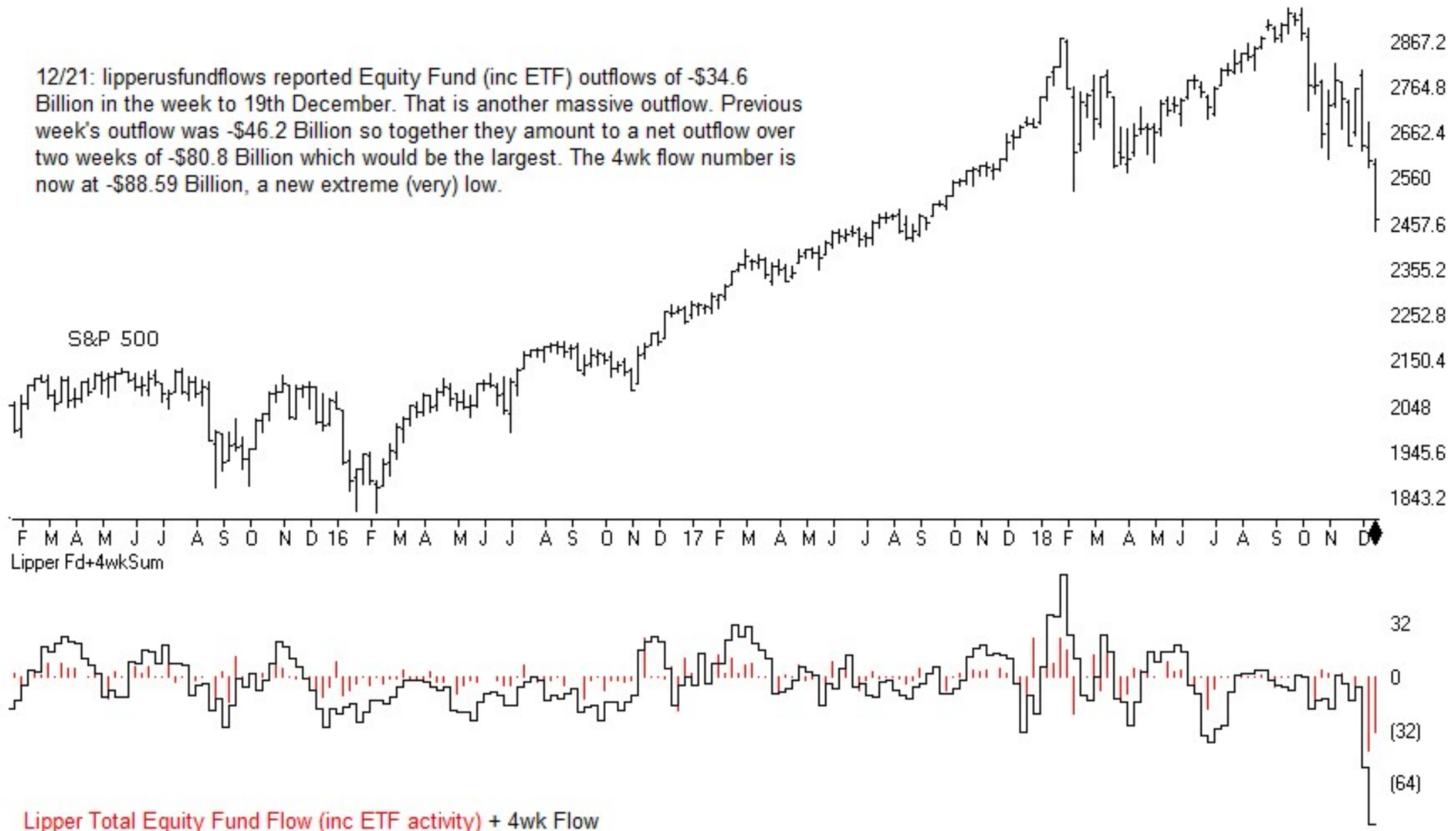


Chart by Chartprofit using AIQ TradingExpert

12/21: lipperusfundflows reported Equity Fund (inc ETF) outflows of -\$34.6 Billion in the week to 19th December. That is another massive outflow. Previous week's outflow was -\$46.2 Billion so together they amount to a net outflow over two weeks of -\$80.8 Billion which would be the largest. The 4wk flow number is now at -\$88.59 Billion, a new extreme (very) low.



# Sentiment

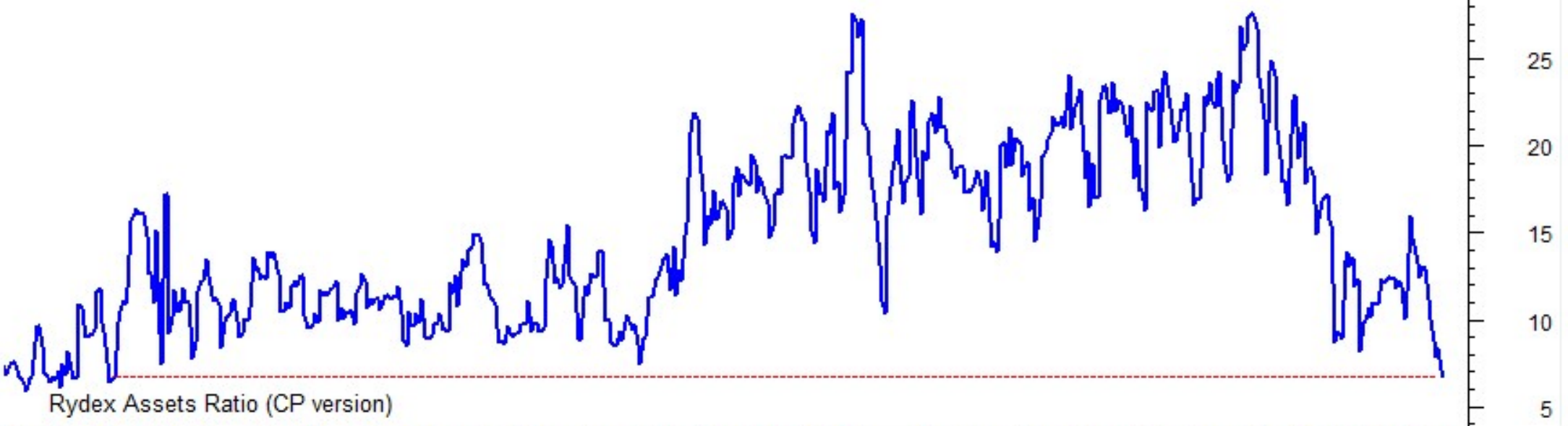
10 S&P 500 + Rydex Assets Ratio (CP version)



RYDEX RATIO REVISED



12/21: My version of the Rydex Assets Ratio ended the week at 6.75, a two year low. Down from 27.5 in early September. Bear fund assets that I follow spiked to their highest level since July 2016.



Rydex Assets Ratio (CP version)

Oct | Nov | Dec | 2017 | Mar | Apr | May | Jun | Jul | Aug | Sep | Oct | Nov | Dec | 2018 | Mar | Apr | May | Jun | Jul | Aug | Sep | Oct | Nov | Dec |

# ChartProfit

<http://www.chartprofitwebcast.com>