

ChartProfit

Charts to Friday 29th December 2017

Market Charts, Major ETFs

Market Sentiment Analysis

***** BREADTH

ChartProfit Breadth System - wk ending 12/29

	-5	-4	-3	-2	↓
NYSE	68	61	61	66	65
NasDaq	60	49	55	61	53
SP500	77	73	70	73	72
R2000	64	49	56	59	49

number = % stocks >50day ma

***** SENTIMENT

Consensus Polls:

12/29: AAll (public poll). Bulls% was higher this week at 52.6%, a three year high. Bears% was lower at 20.6%, a two year low. **The nett (Bulls minus Bears) at 32 is the highest since January 2015.**

12/29: Investors Intelligence. Bulls% was lower at 63.5% having peaked seven weeks ago at 64.4%. Bear% was lower at 14.4%. The nett (bulls minus Bears) is at 49.1, having **reached 50 seven weeks ago which was the highest since 1987.**

12/29: Market Vane (advisers) poll was unchanged at 70. **Poll reached 71 four weeks ago, the highest level since 2007.**

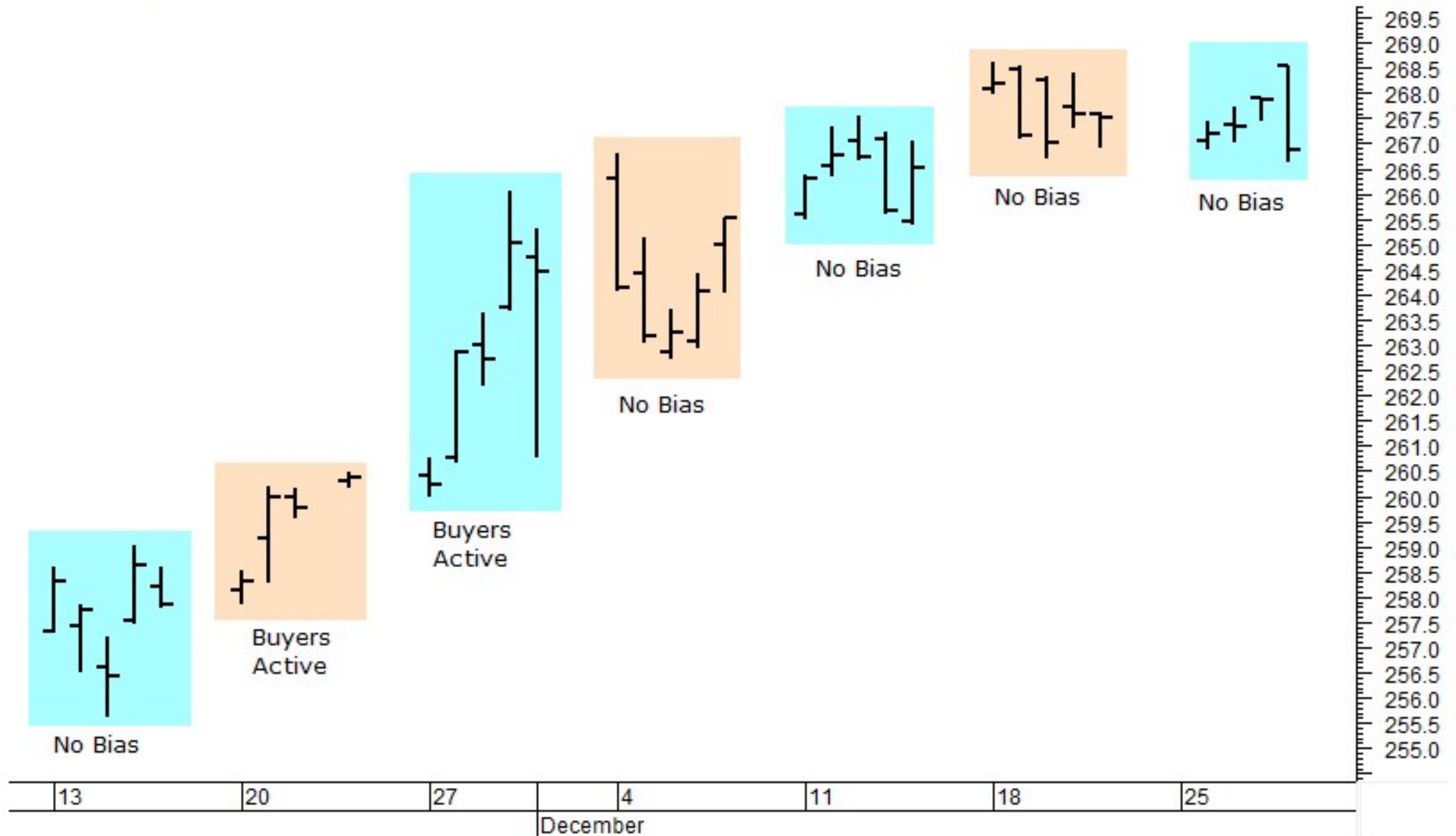
12/29: NAAIM exposure index was lower at 69.39 having **reached 109.44 two weeks ago, the highest index reading since it began in 2006.**

Mutual Fund Flow:

12/29: My (new) version of the Rydex Assets Ratio ended the week at 21.46 having **reached 22.27 on Thursday, the highest ratio in the database.**

12/29: lipperusfundflows reported Equity Fund (inc ETF) inflows of \$24.1 Billion in the week to 27th December, the largest single-week inflow since January 2015. However the previous week there was a massive outflow of -\$22.2 Billion **which took the 4week flow number down to a negative -\$33 Billion, the lowest since February 2008.**

SPY Weekly Structure

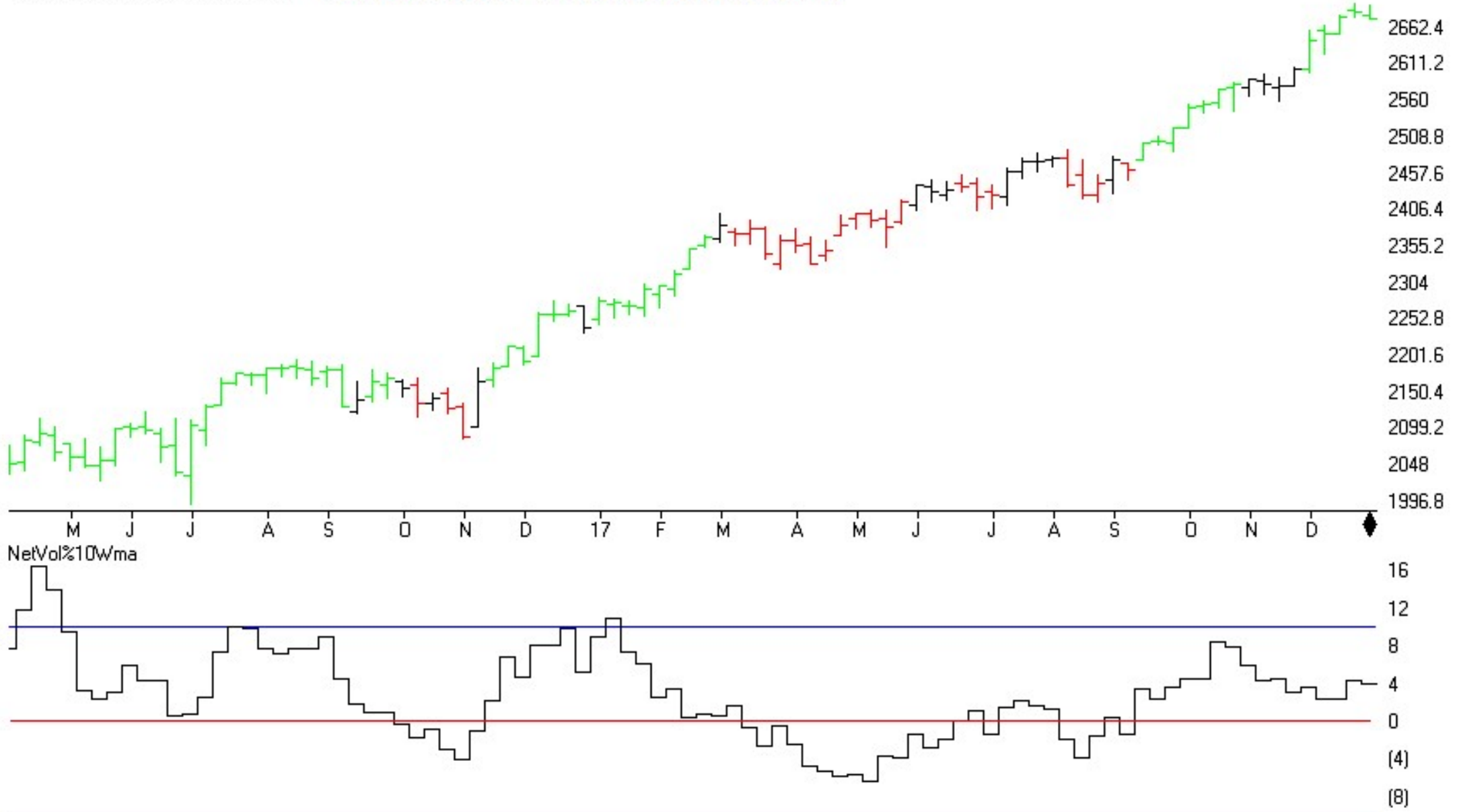


Commitments of Traders

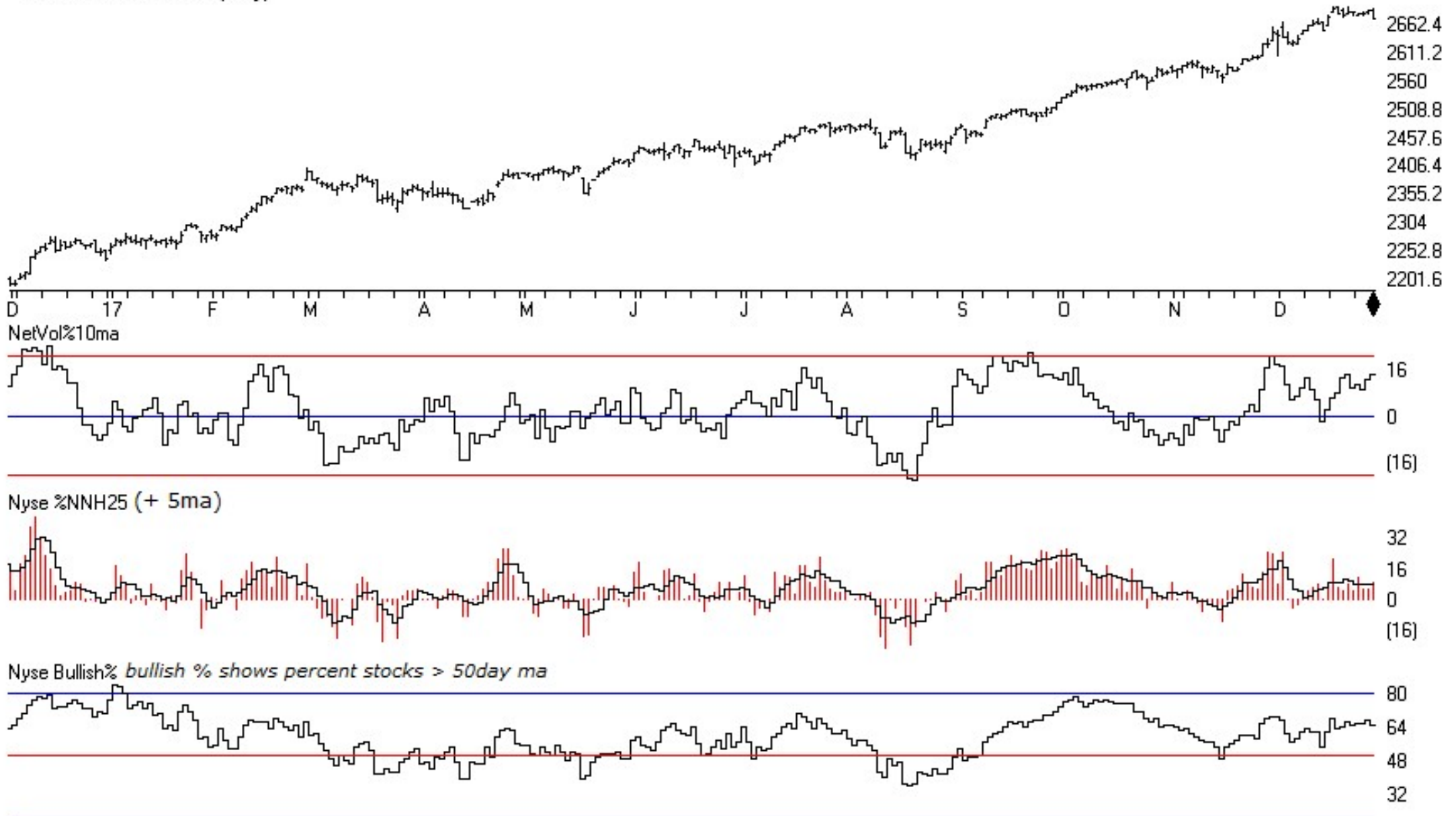
C.O.T.
Quick
View

	SP500	CM Net	CM Long	CM Short	LT Net	LT Long	LT Short	ST Net	ST Long	ST Short
	12/26/17	56.8	76.2	62.9	77.5	45.7	12.4	33.6	35.0	70.0
	12/19/17	45.3	50.6	69.4	70.7	31.6	8.3	47.7	60.2	64.5
	GOLD	CM Net	CM Long	CM Short	LT Net	LT Long	LT Short	ST Net	ST Long	ST Short
	12/26/17	61.8	94.1	79.1	39	5	10.2	32.3	36.4	43.6
	12/19/17	72.5	96.9	63.1	27.6	0	28.9	38.6	65.6	60.6
	CRUDE OIL	CM Net	CM Long	CM Short	LT Net	LT Long	LT Short	ST Net	ST Long	ST Short
	12/26/17	0.0	9.0	100.0	100.0	79.5	0.2	72.6	40.1	30.0
	12/19/17	3.2	10.4	94.5	95.6	59.9	3.7	95.7	8.7	0.0
	T-BONDS	CM Net	CM Long	CM Short	LT Net	LT Long	LT Short	ST Net	ST Long	ST Short
	12/26/17	24.8	76.0	100.0	78.6	48.1	9.5	33.0	0.0	8.6
	12/19/17	6.2	45.7	100.0	100.0	70.4	0.0	25.8	0.0	19.8
	GBPUSD	CM Net	CM Long	CM Short	LT Net	LT Long	LT Short	ST Net	ST Long	ST Short
	12/26/17	11.1	41.5	95.0	89.5	73.3	13.6	84.1	57.4	24.2
	12/19/17	5.3	31.6	100.0	100.0	82.4	0.0	67.9	53.0	46.3
	JPYUSD	CM Net	CM Long	CM Short	LT Net	LT Long	LT Short	ST Net	ST Long	ST Short
	12/26/17	69.0	59.7	5.3	23.5	60.0	100.0	55.3	36.6	28.3
	12/19/17	73.3	84.6	0.0	25.5	38.6	100.0	31.8	25.7	53.5
	EURUSD	CM Net	CM Long	CM Short	LT Net	LT Long	LT Short	ST Net	ST Long	ST Short
	12/26/17	7.9	65.4	100.0	57.5	50.2	46.4	100.0	51.0	0.0
	12/19/17	26.3	93.4	100.0	49.9	29.2	40.7	100.0	21.6	0.0
	USD IX	CM Net	CM Long	CM Short	LT Net	LT Long	LT Short	ST Net	ST Long	ST Short
	12/26/17	22.2	23.1	75.9	79.5	100.0	35.1	2.9	24.4	40.9
	12/19/17	10.1	7.0	84.1	88.0	95.6	23.6	18.2	59.6	48.7

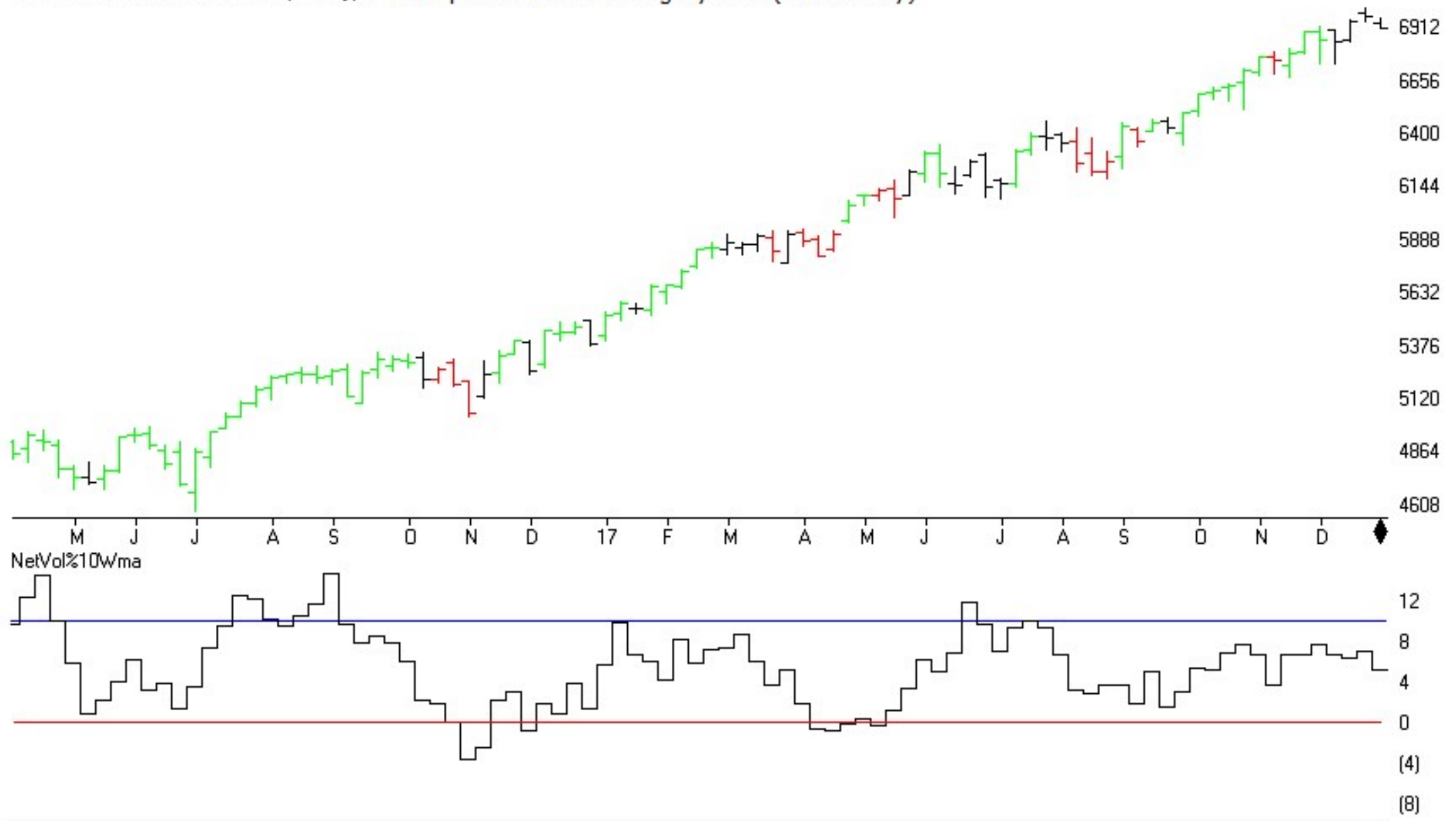
MARKET CHART NYSE (Weekly) + Chartprofit Market Timing System (color study)



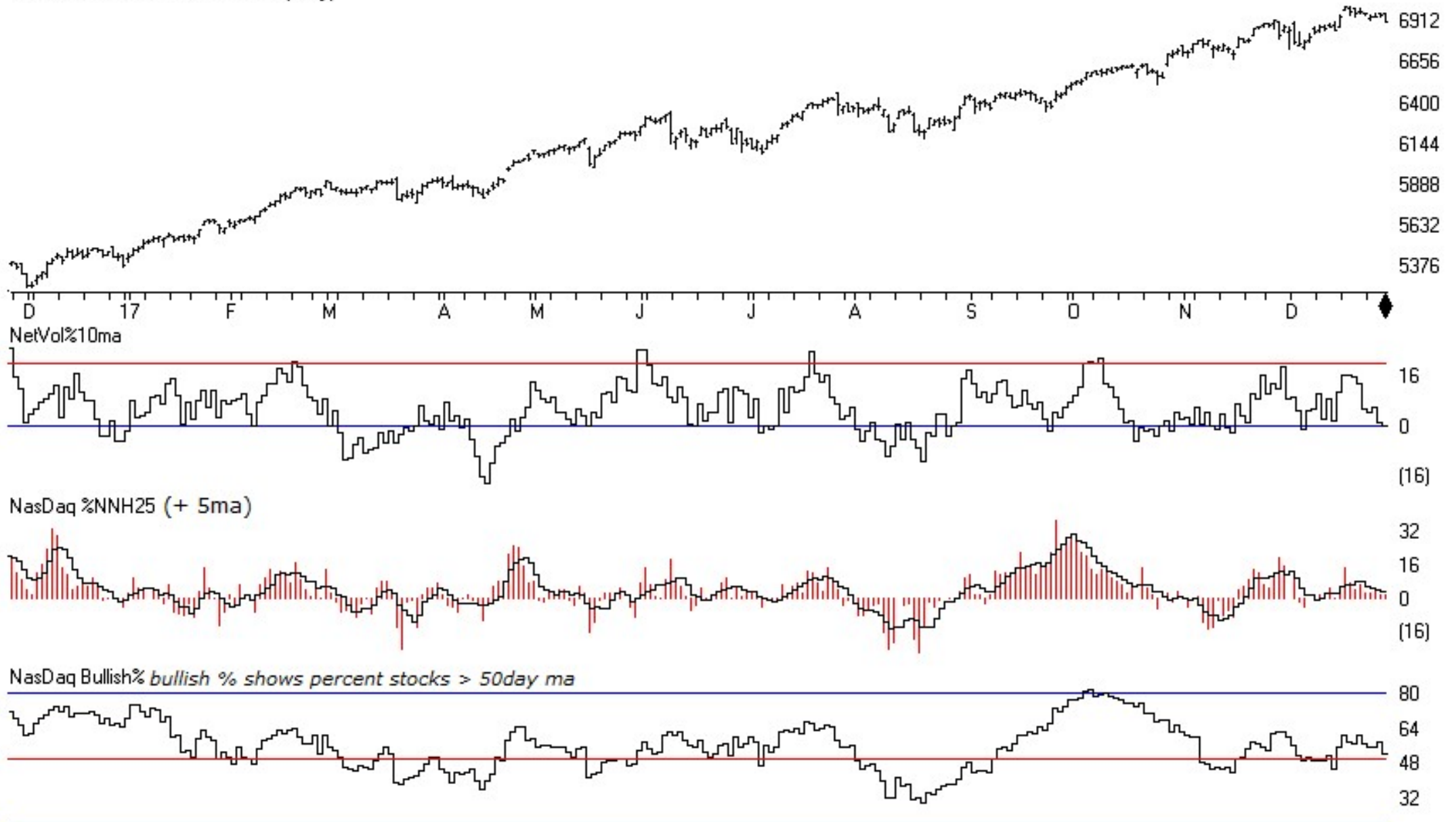
MARKET CHART NYSE (Daily)



MARKET CHART NASDAQ 1800 (Weekly) + Chartprofit Market Timing System (color study)

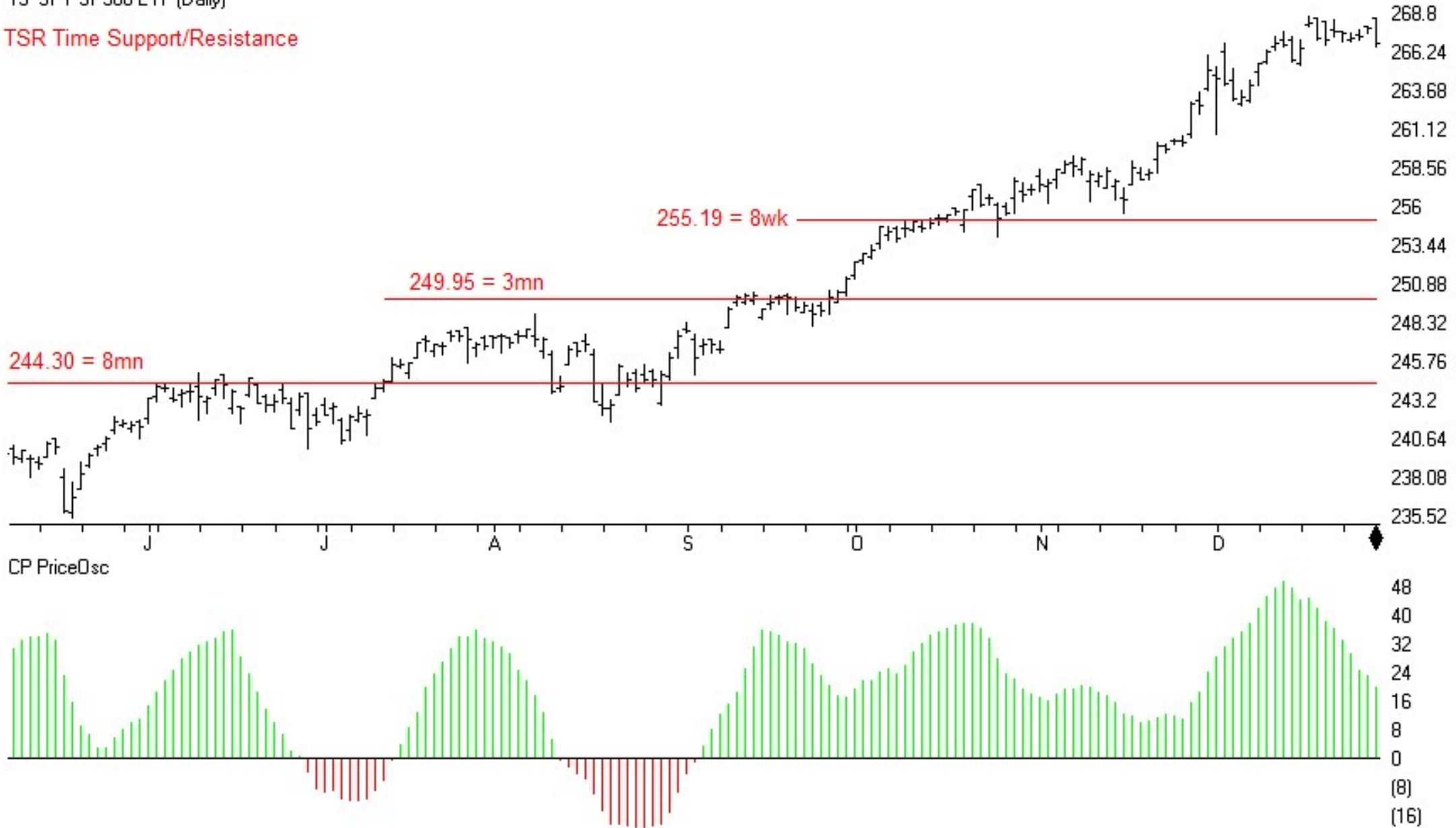


MARKET CHART NASDAQ 1800 (Daily)

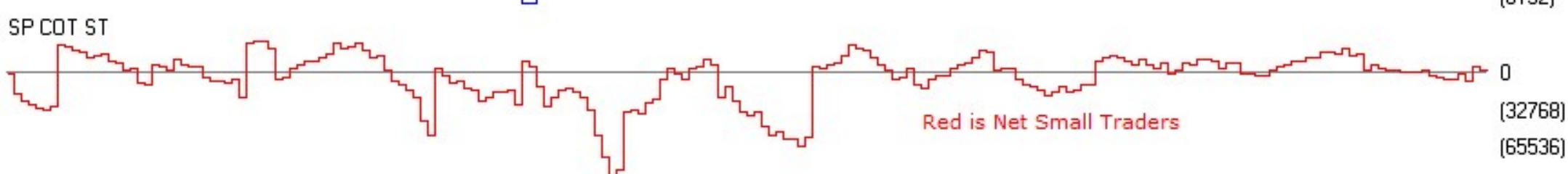
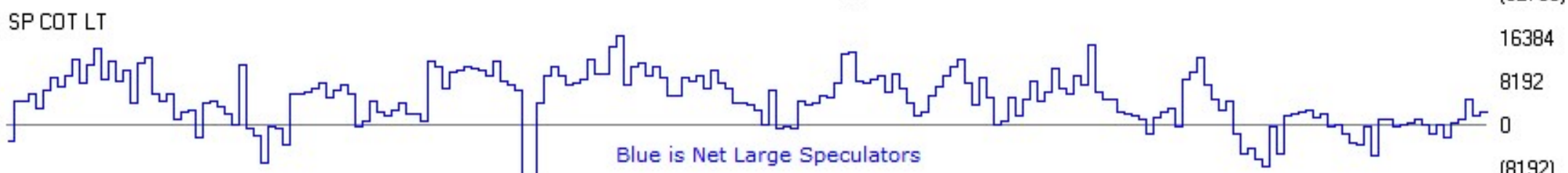
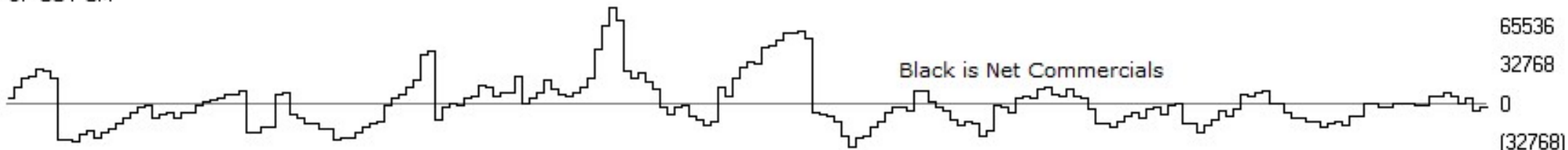
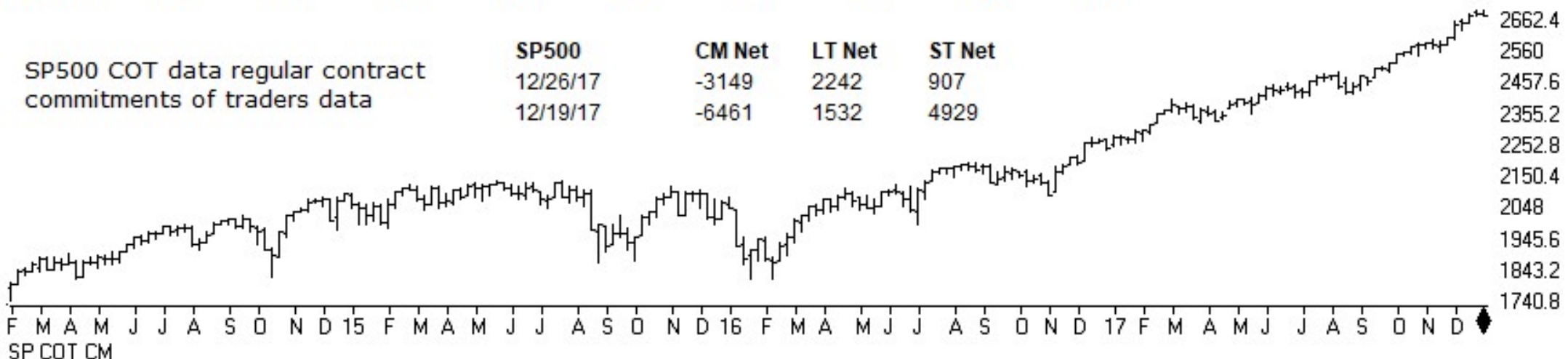


13 SPY SP500 ETF (Daily)

TSR Time Support/Resistance

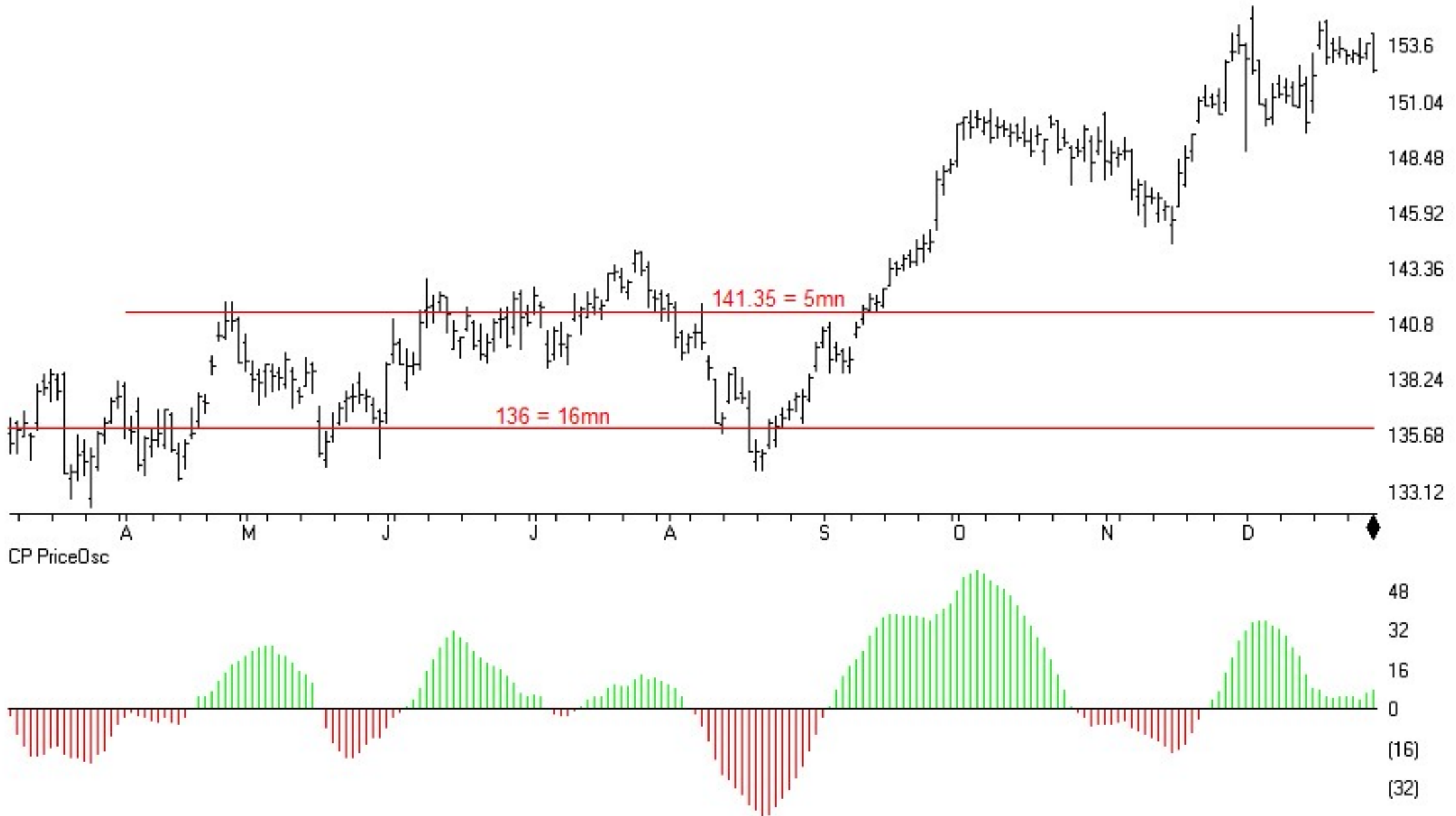


SP500	CM Net	CM Long	CM Short	LT Net	LT Long	LT Short	ST Net	ST Long	ST Short
12/26/17	56.8	76.2	62.9	77.5	45.7	12.4	33.6	35.0	70.0
12/19/17	45.3	50.6	69.4	70.7	31.6	8.3	47.7	60.2	64.5



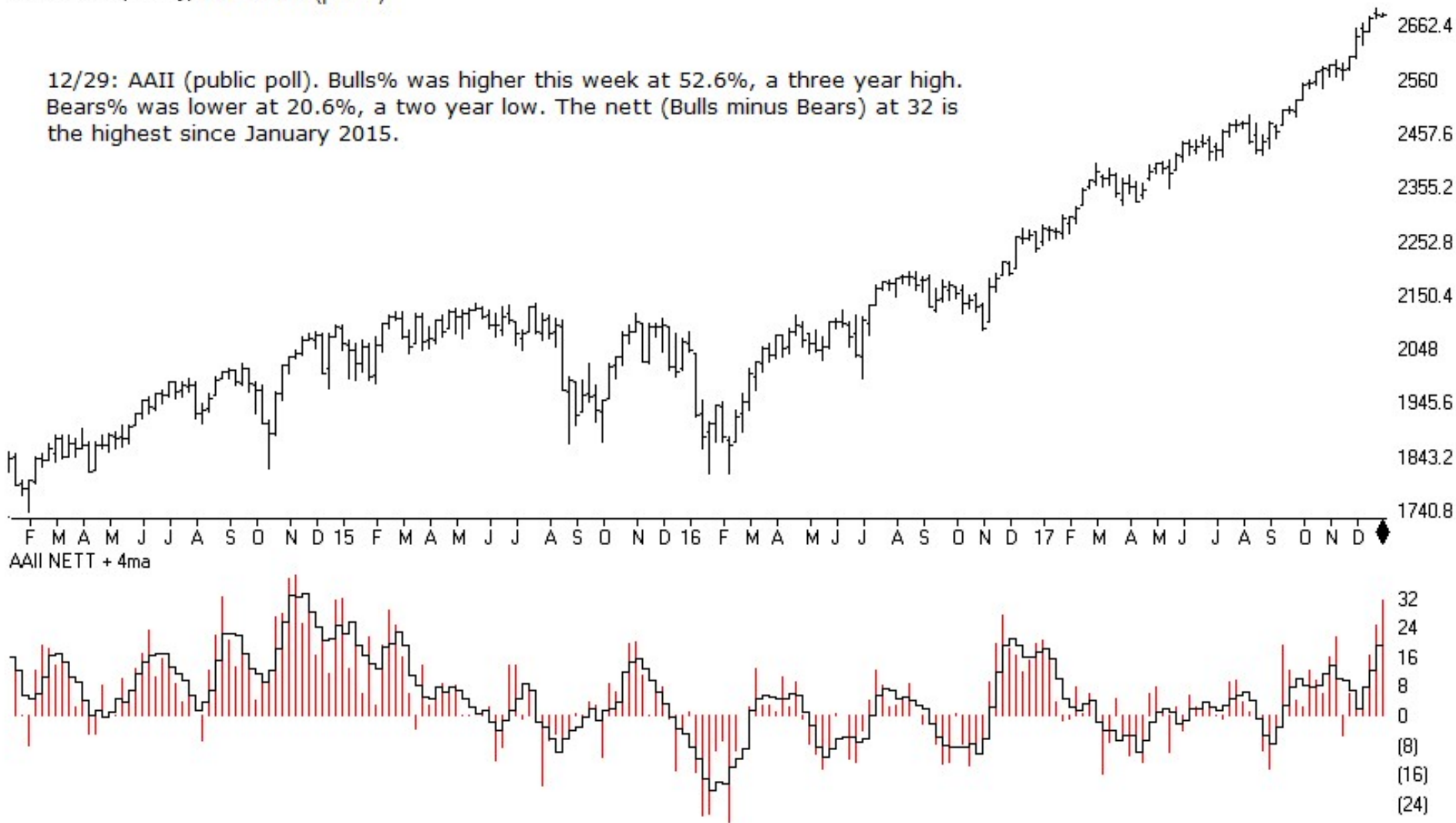
TSR Time Support/Resistance

11 IWM R2000 ETF (Daily)



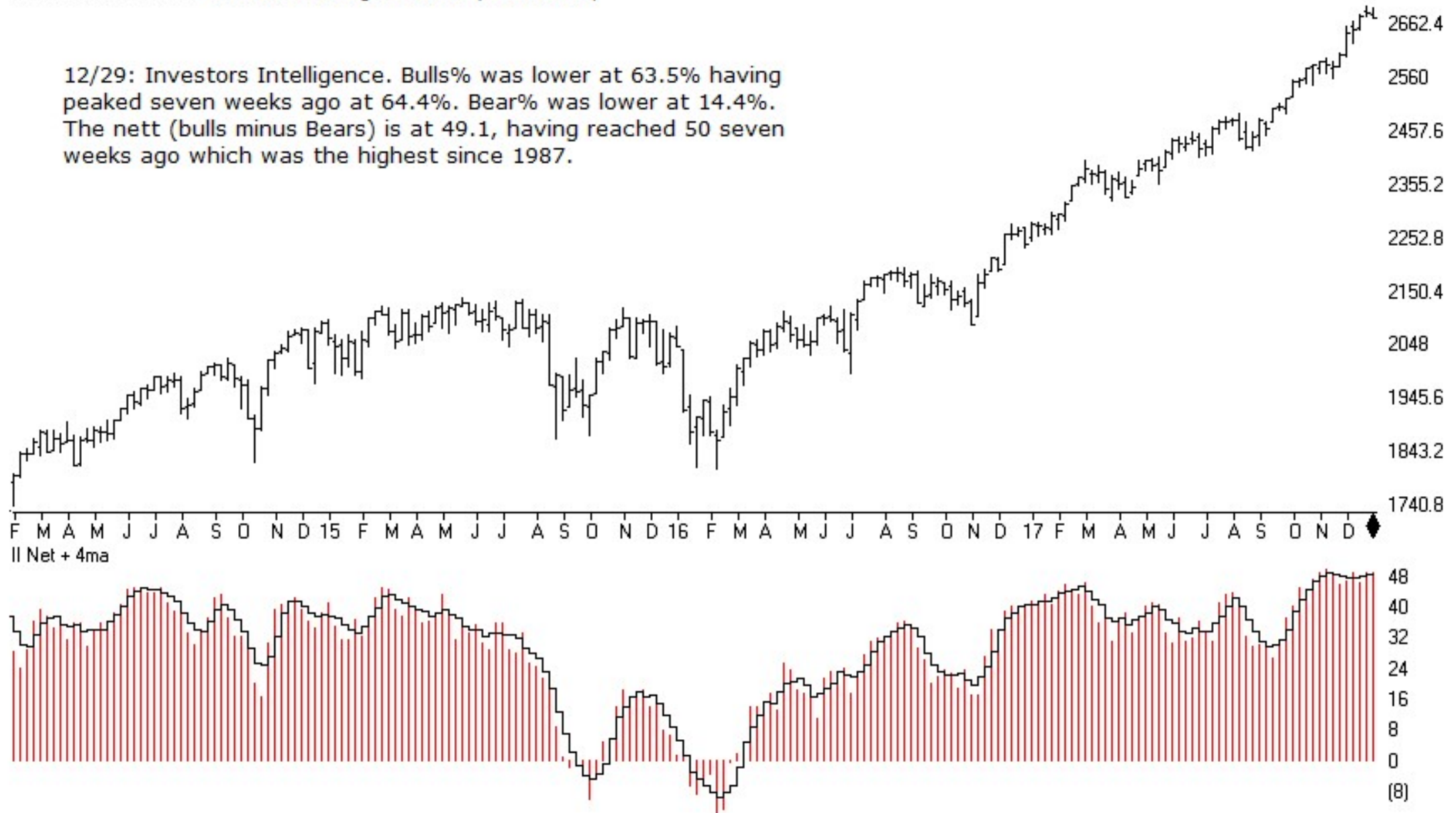
SP500 Index (Weekly) + AAI Poll (public)

12/29: AAI (public poll). Bulls% was higher this week at 52.6%, a three year high. Bears% was lower at 20.6%, a two year low. The nett (Bulls minus Bears) at 32 is the highest since January 2015.



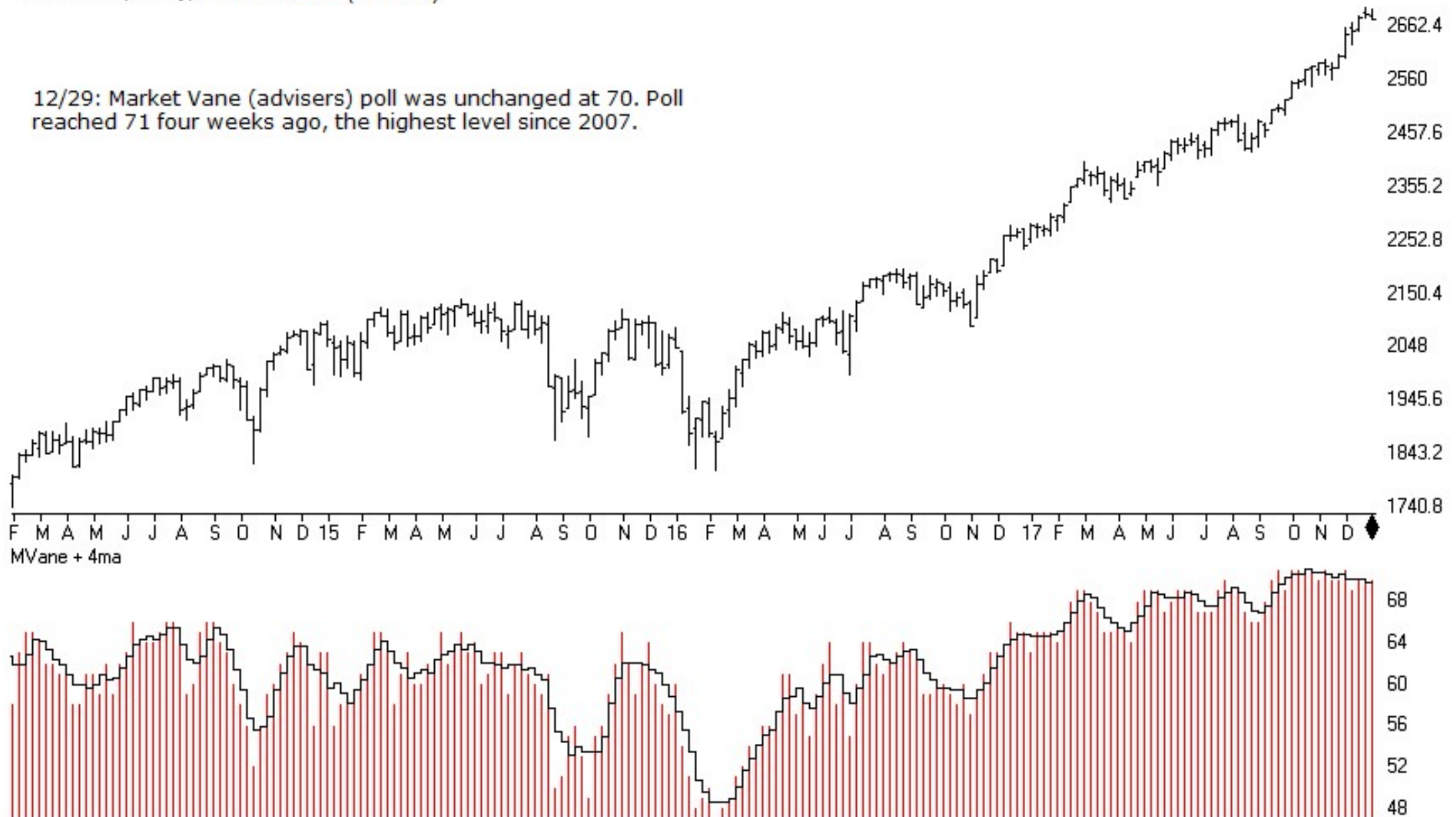
SP500 Index (Weekly) + Investors Intelligence Poll (newsletters)

12/29: Investors Intelligence. Bulls% was lower at 63.5% having peaked seven weeks ago at 64.4%. Bear% was lower at 14.4%. The nett (bulls minus Bears) is at 49.1, having reached 50 seven weeks ago which was the highest since 1987.



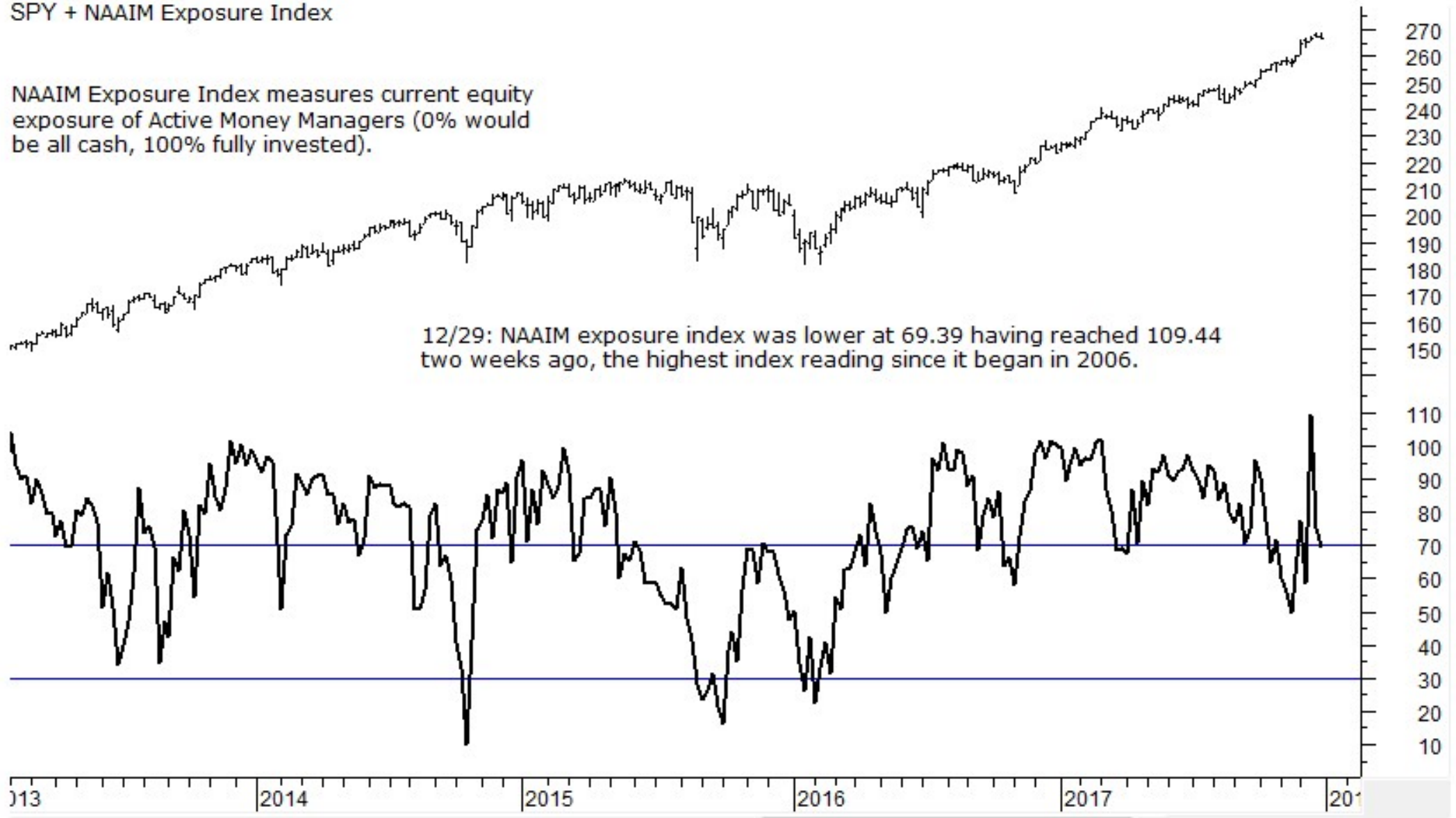
SP500 Index (Weekly) + Market Vane (advisors)

12/29: Market Vane (advisers) poll was unchanged at 70. Poll reached 71 four weeks ago, the highest level since 2007.

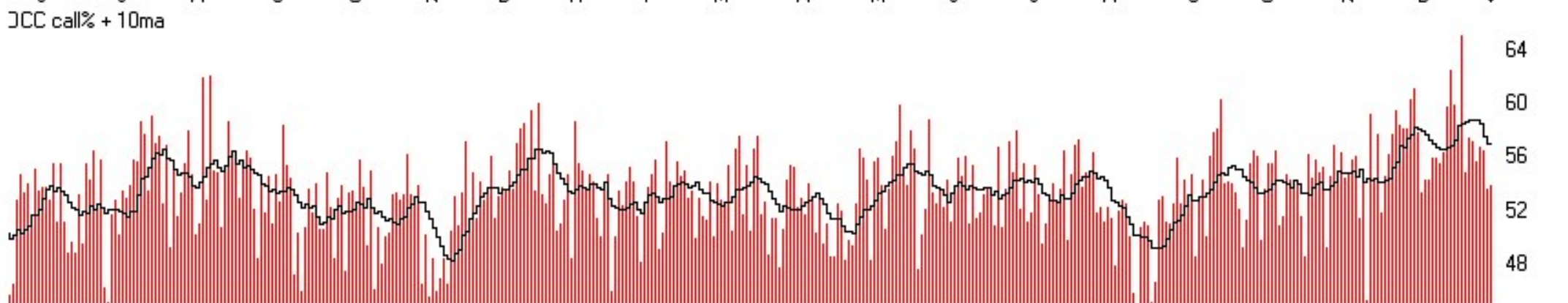
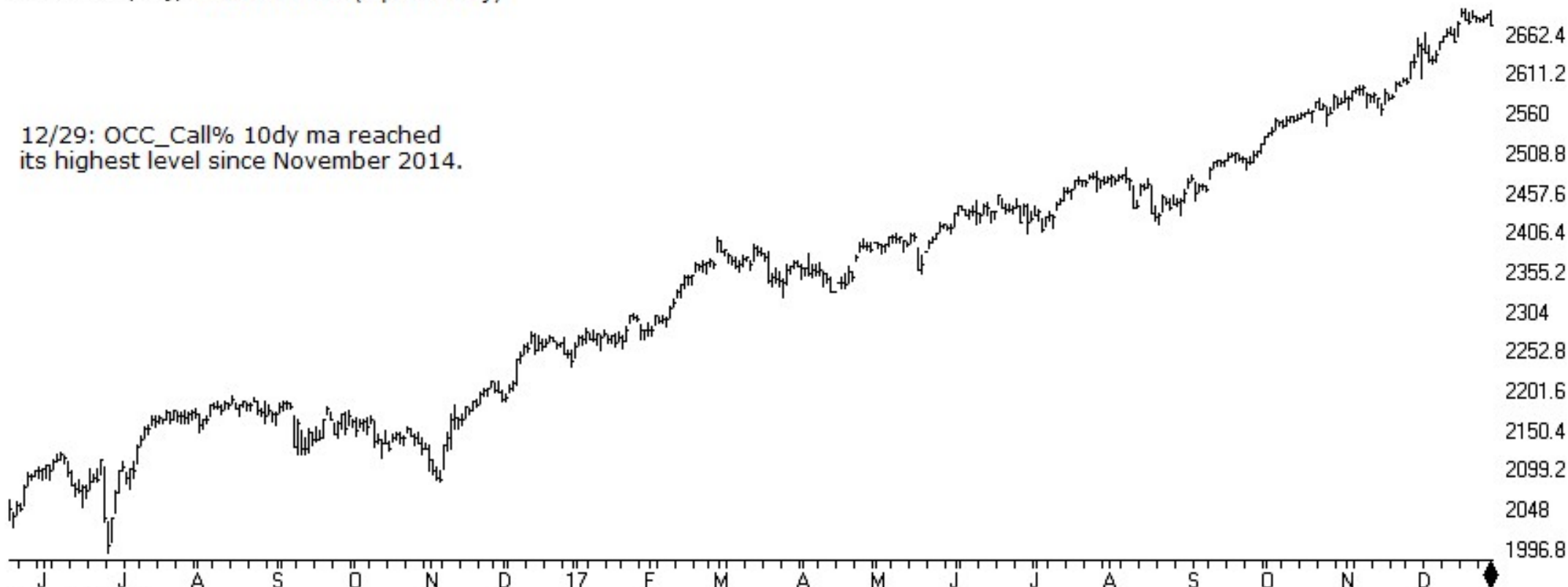


SPY + NAAIM Exposure Index

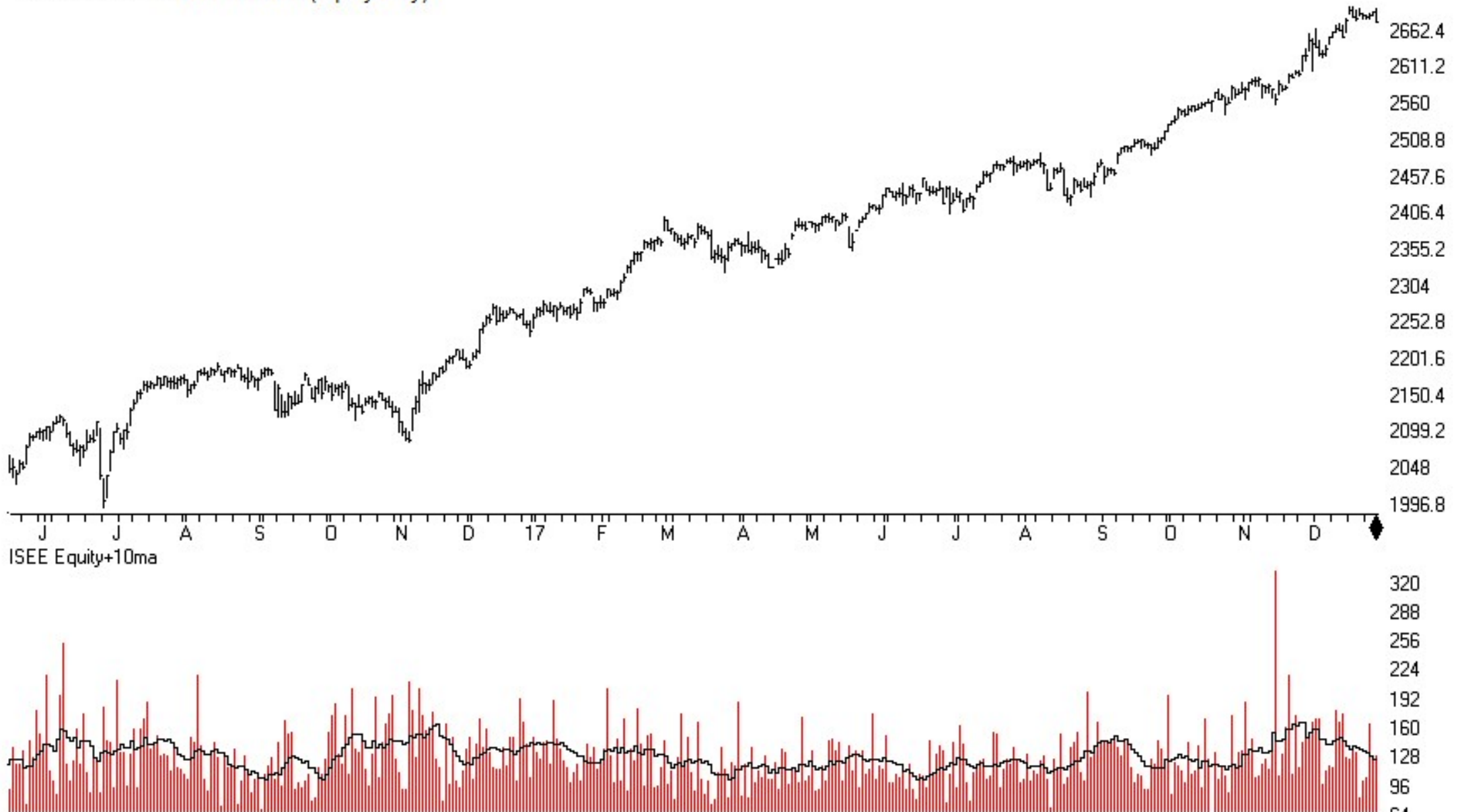
NAAIM Exposure Index measures current equity exposure of Active Money Managers (0% would be all cash, 100% fully invested).



SP500 Index (Daily) + OCC Calls% (equities only)

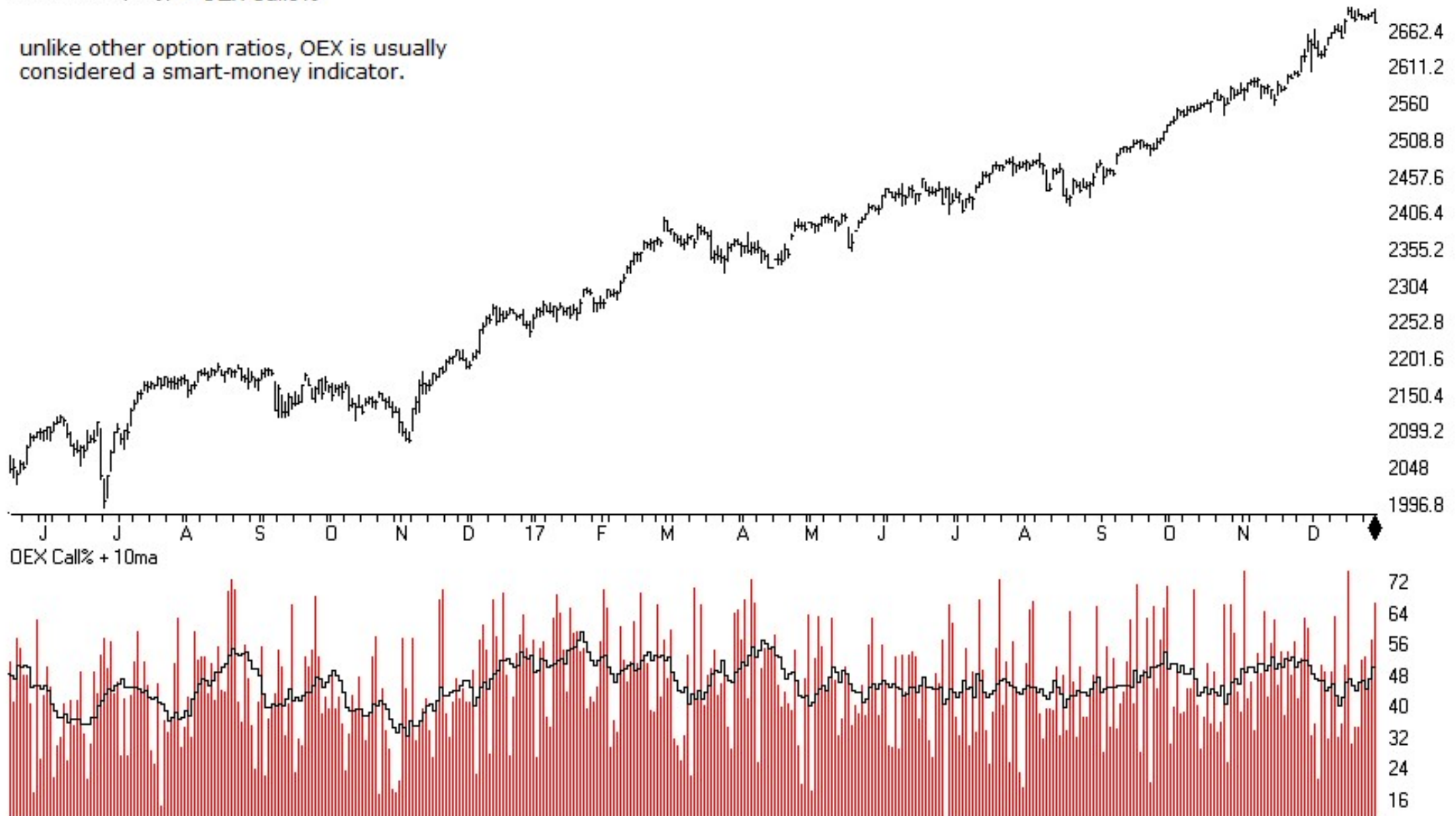


SP500 Index (Daily) + ISEE Index (equity only)

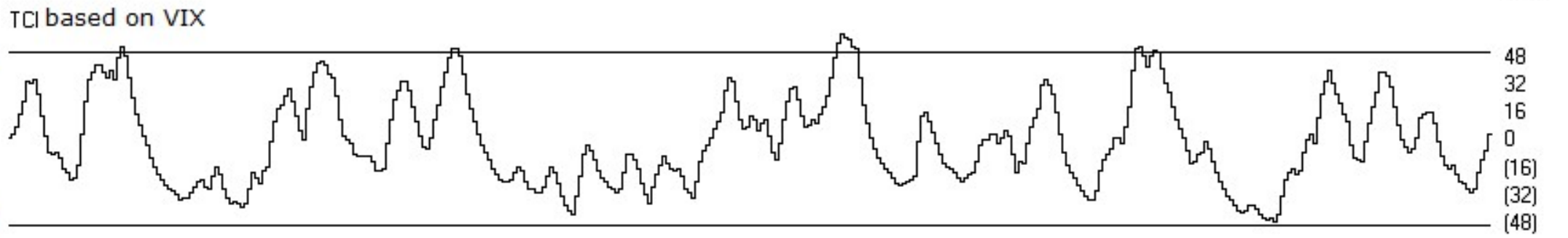
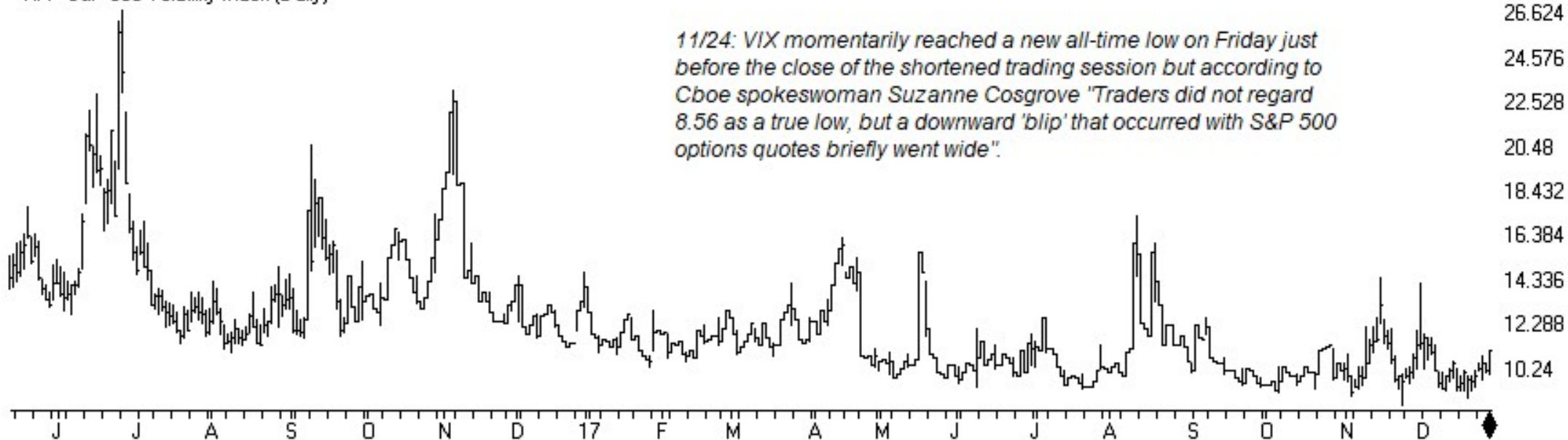


SP500 Index (Daily) + OEX Calls%

unlike other option ratios, OEX is usually considered a smart-money indicator.

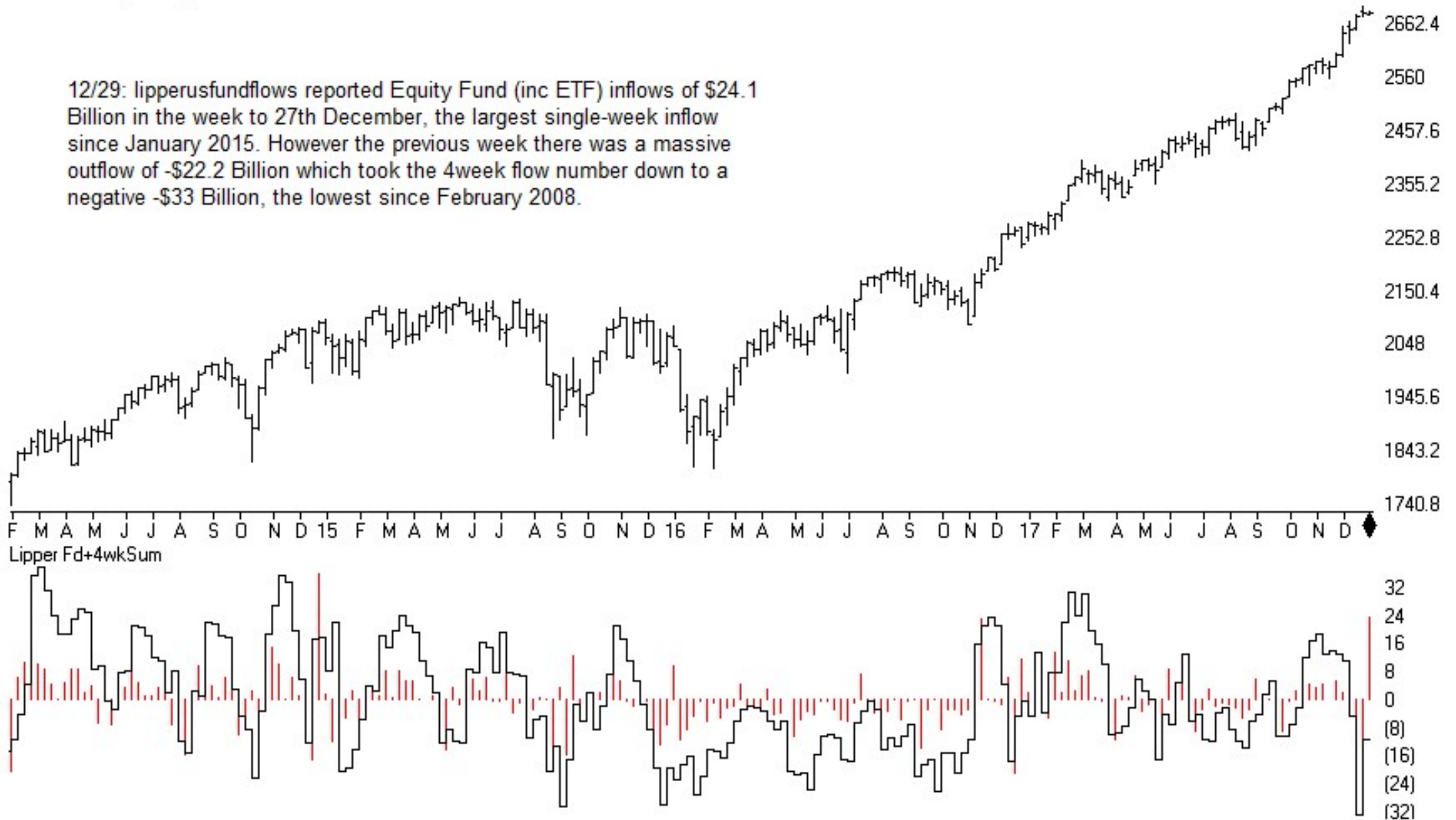


VIX - S&P 500 Volatility Index (Daily)



SP500 Index (Weekly)

12/29: lipperusfundflows reported Equity Fund (inc ETF) inflows of \$24.1 Billion in the week to 27th December, the largest single-week inflow since January 2015. However the previous week there was a massive outflow of -\$22.2 Billion which took the 4week flow number down to a negative -\$33 Billion, the lowest since February 2008.

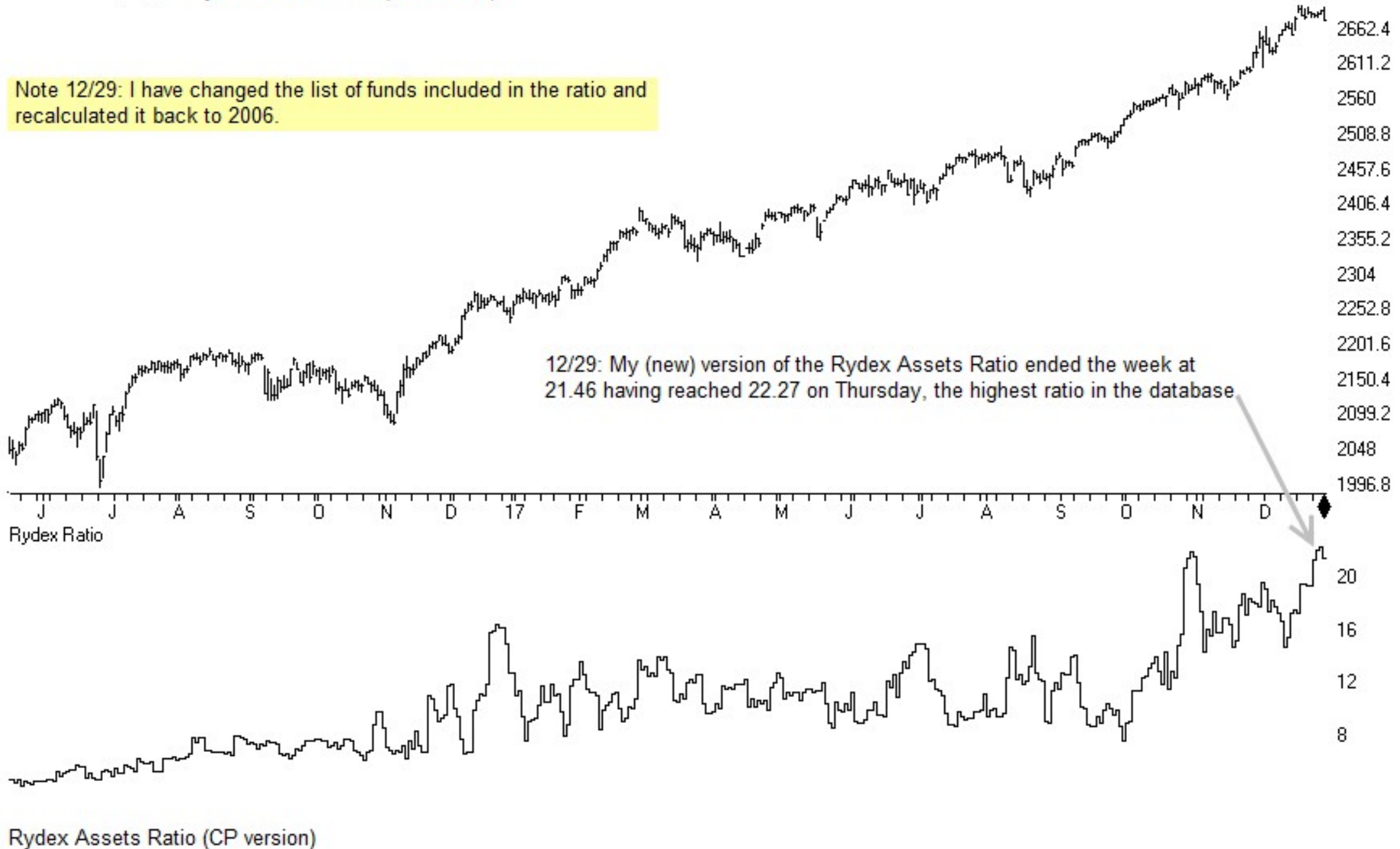


Lipper Total Equity Fund Flow (inc ETF activity) + 4wk Flow

Sentiment

SP500 Index (Daily) + Rydex Assets Ratio (CP version)

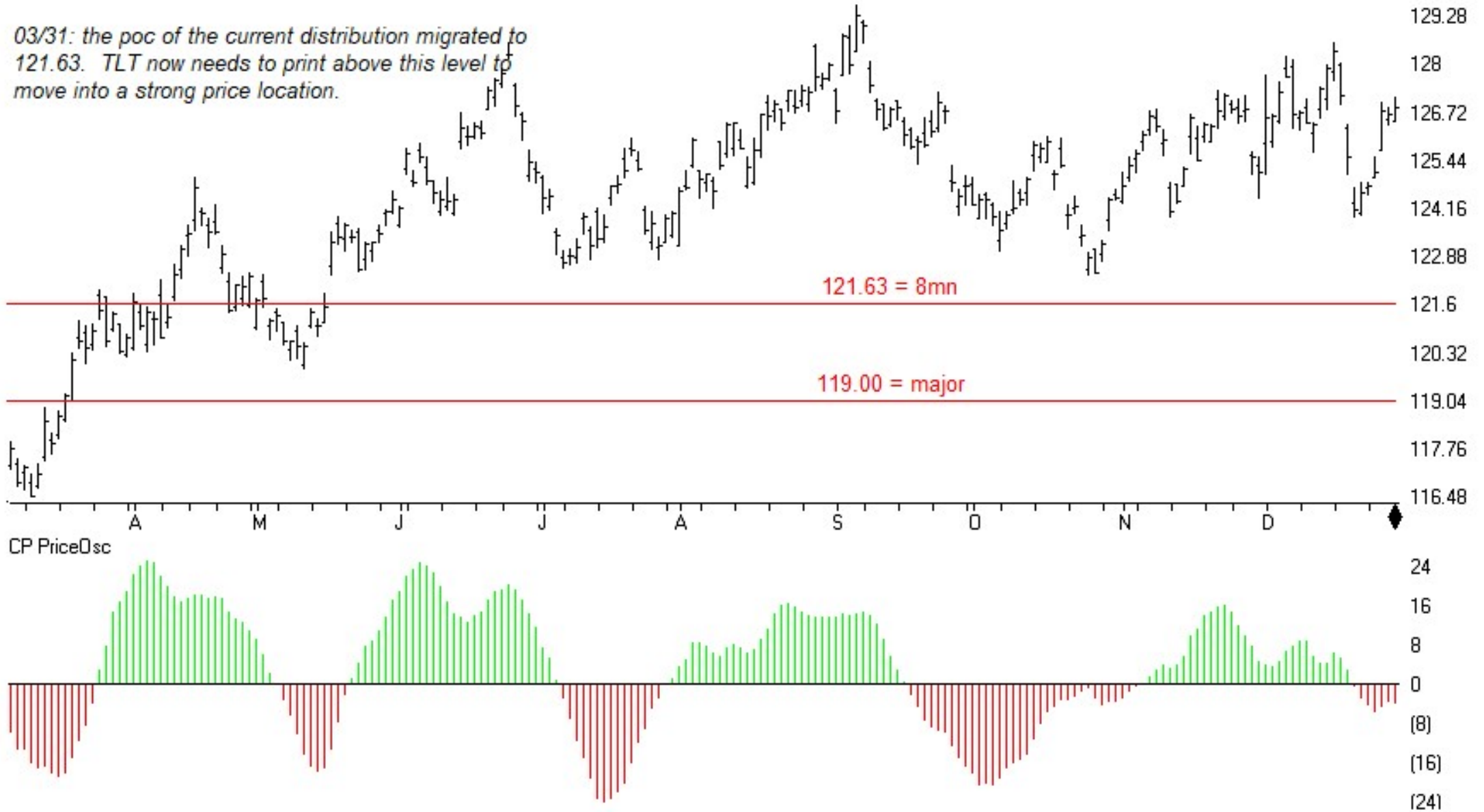
Note 12/29: I have changed the list of funds included in the ratio and recalculated it back to 2006.



TSR Time Support/Resistance

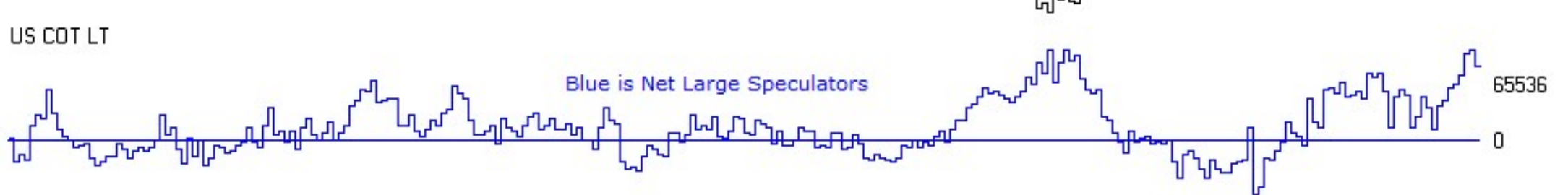
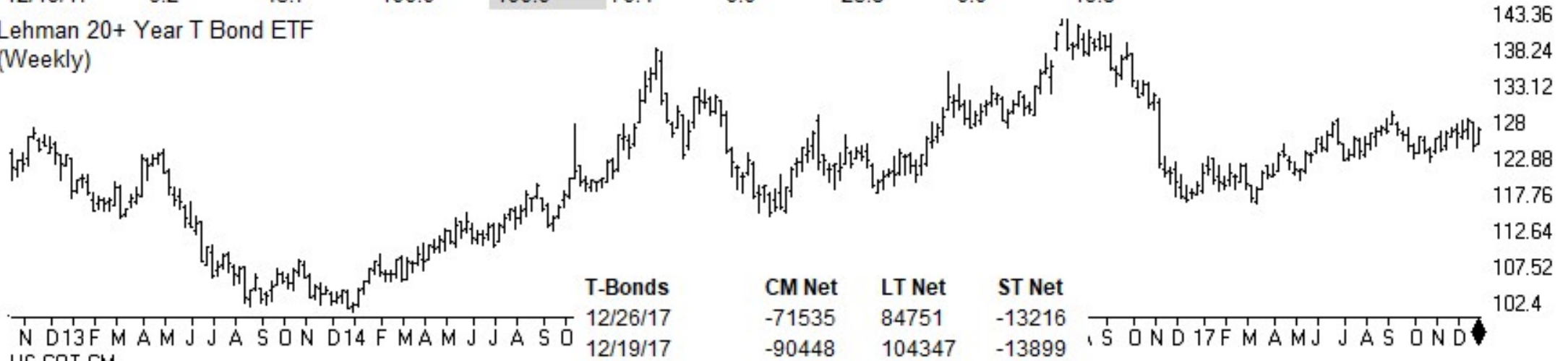
30 Lehman 20+ Year T Bond ETF (Daily)

03/31: the poc of the current distribution migrated to 121.63. TLT now needs to print above this level to move into a strong price location.



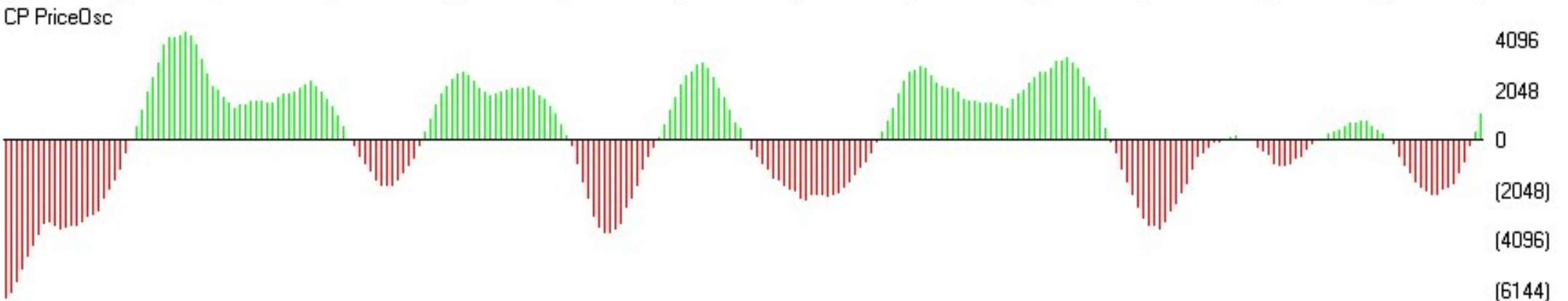
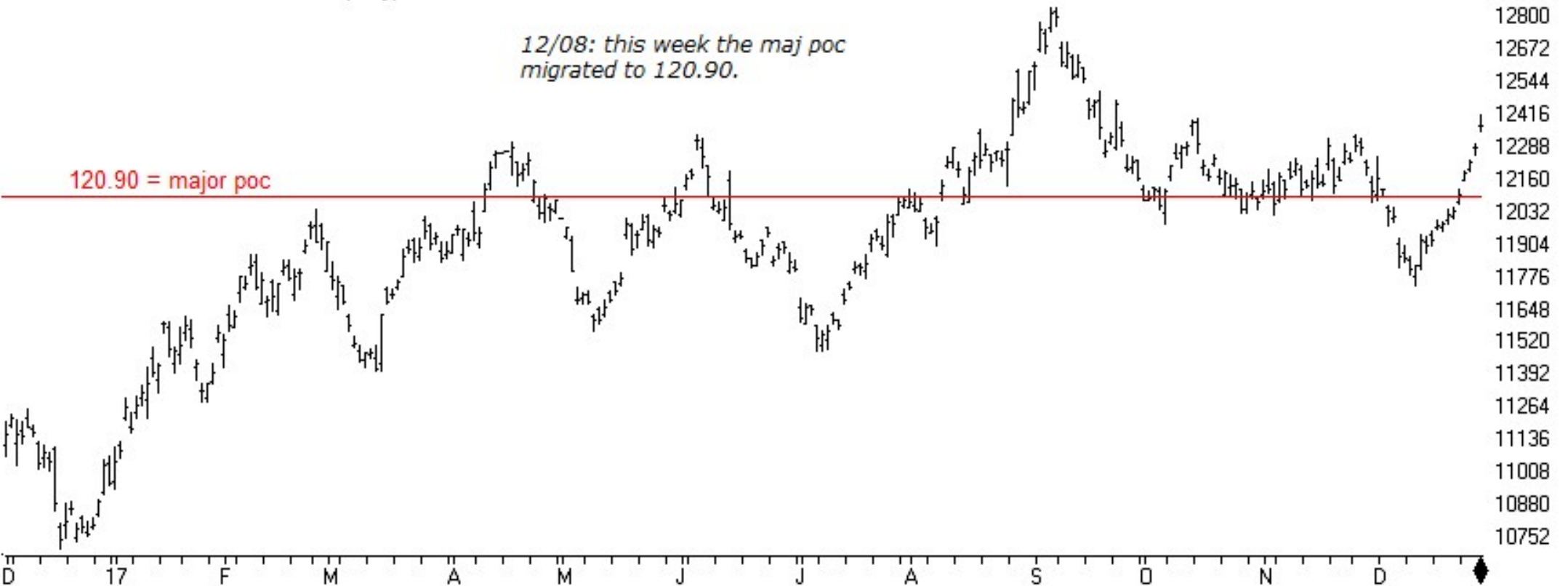
T-BONDS	CM Net	CM Long	CM Short	LT Net	LT Long	LT Short	ST Net	ST Long	ST Short
12/26/17	24.8	76.0	100.0	78.6	48.1	9.5	33.0	0.0	8.6
12/19/17	6.2	45.7	100.0	100.0	70.4	0.0	25.8	0.0	19.8

Lehman 20+ Year T Bond ETF
(Weekly)

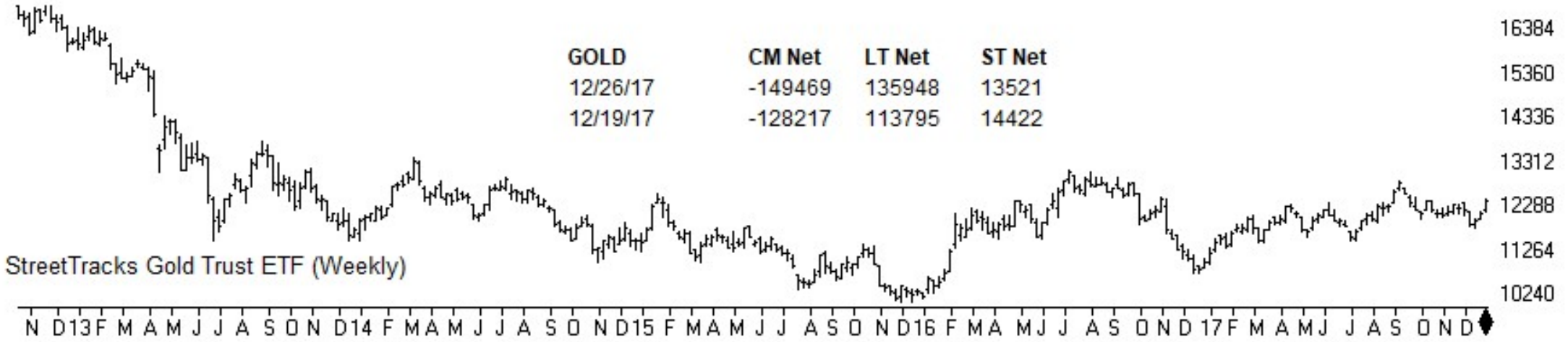


143.36
138.24
133.12
128
122.88
117.76
112.64
107.52
102.4
65536
0
(65536)
65536
0
(32768)
(65536)

TSR Time Support/Resistance
STREETTRACKS GOLD TRUST ETF (Daily)



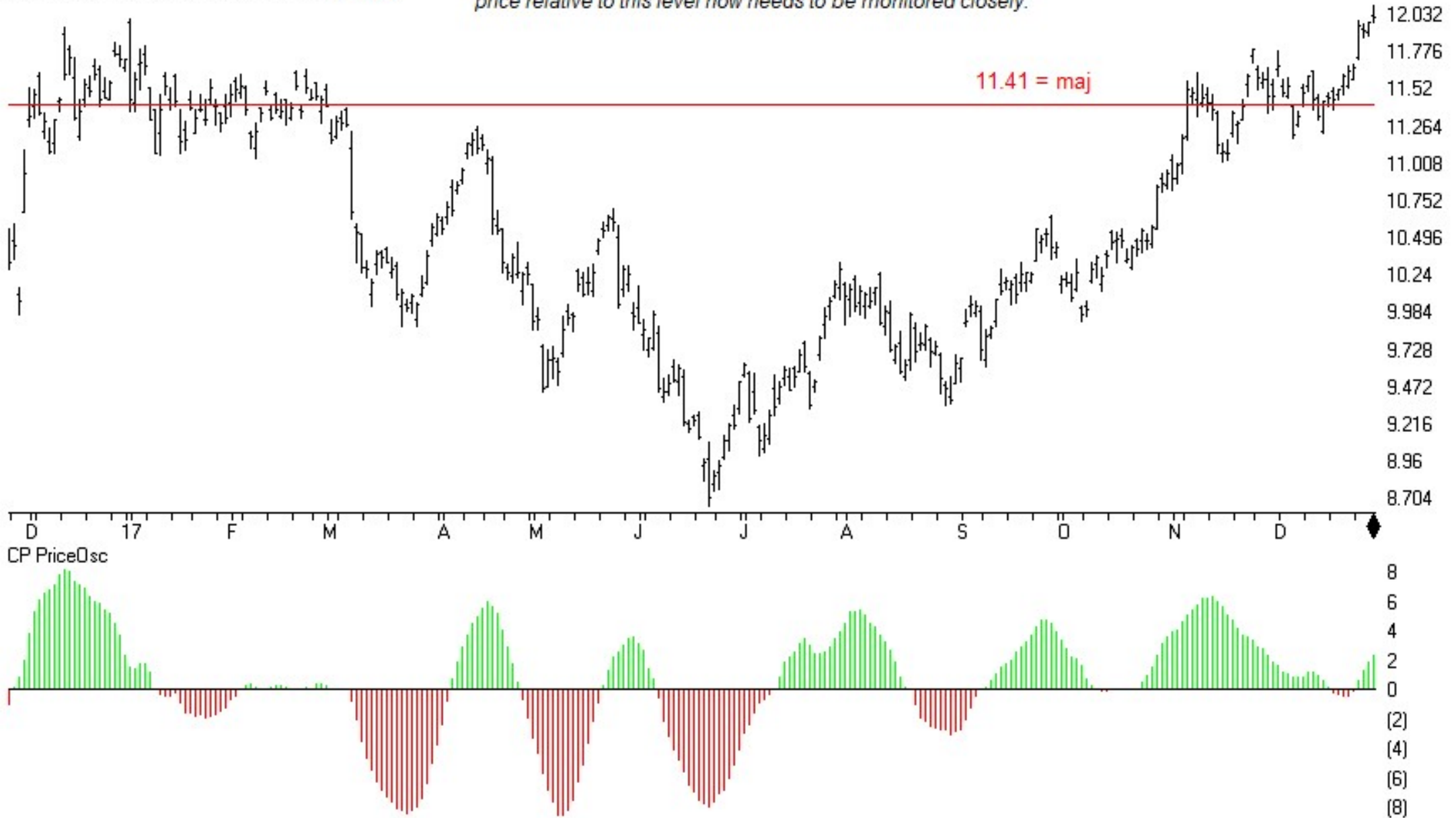
GOLD	CM Net	CM Long	CM Short	LT Net	LT Long	LT Short	ST Net	ST Long	ST Short
12/26/17	61.8	94.1	79.1	39	5	10.2	32.3	36.4	43.6
12/19/17	72.5	96.9	63.1	27.6	0	28.9	38.6	65.6	60.6



TSR Time Support/Resistance

43 UNITED STATES OIL FUND (Daily) (USO)

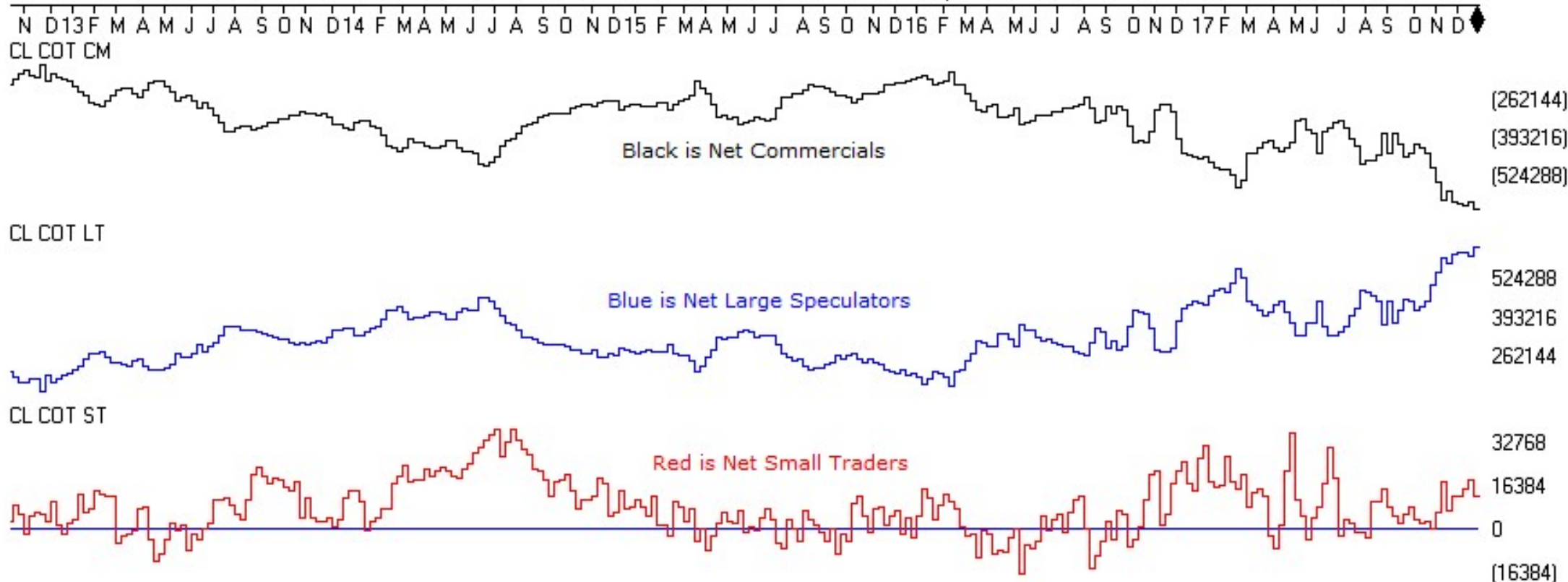
12/01: The major poc has now migrated higher to 11.41. The migration of a maj poc often precedes a directional move so price relative to this level now needs to be monitored closely.



CRUDE OIL	CM Net	CM Long	CM Short	LT Net	LT Long	LT Short	ST Net	ST Long	ST Short
12/26/17	0.0	9.0	100.0	100.0	79.5	0.2	72.6	40.1	30.0
12/19/17	3.2	10.4	94.5	95.6	59.9	3.7	95.7	8.7	0.0

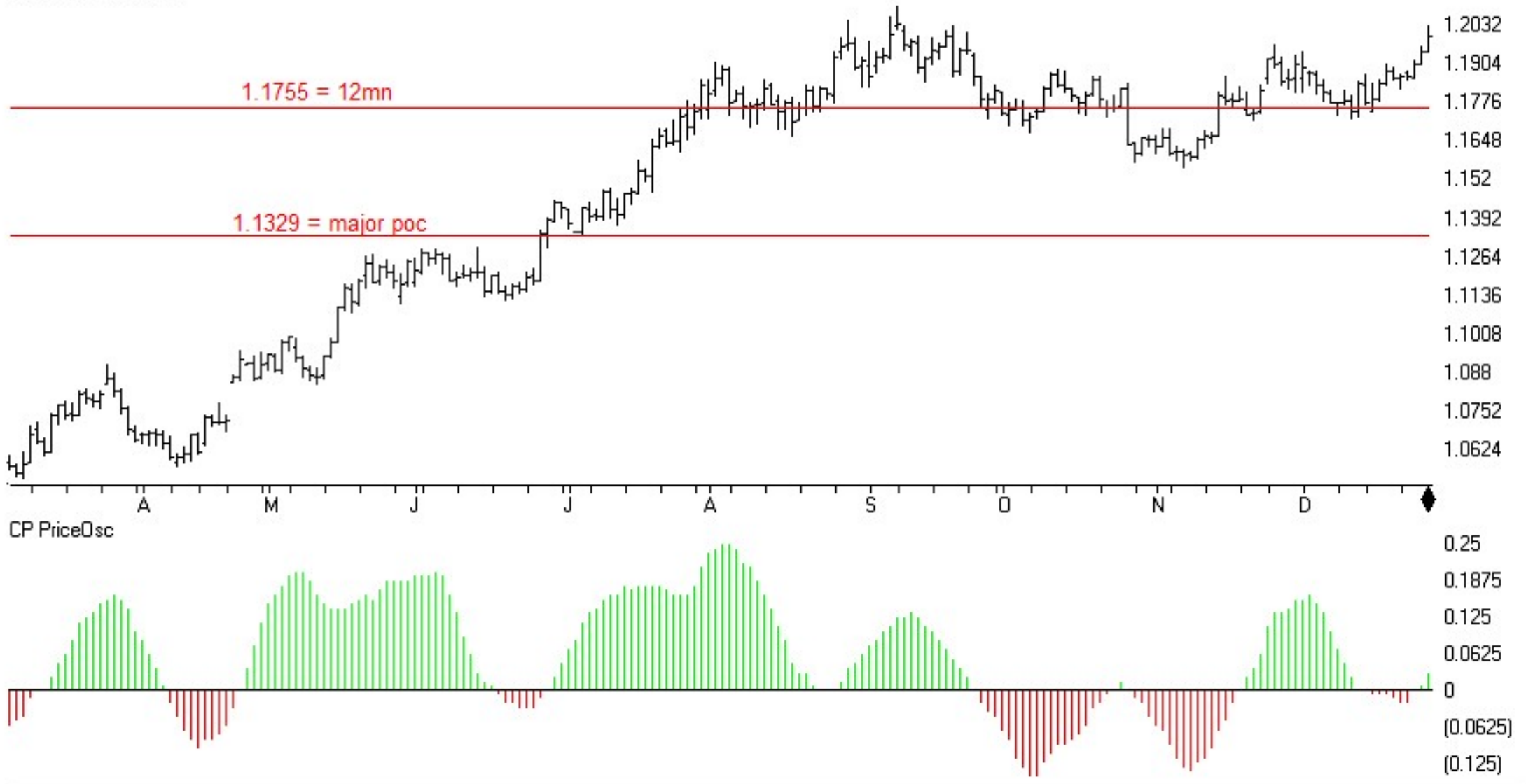


CRUDE OIL	CM Net	LT Net	ST Net
12/26/17	-644269	632161	12108
12/19/17	-619991	601839	18152

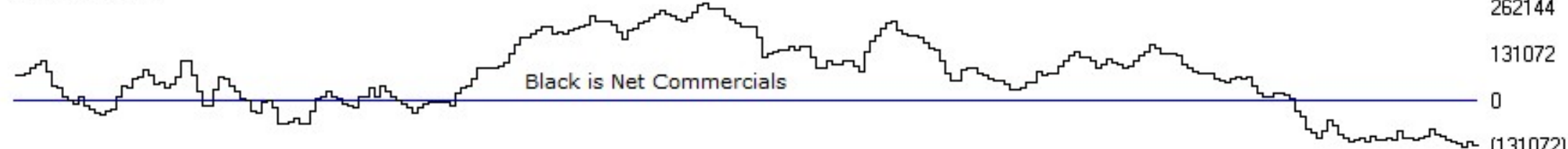
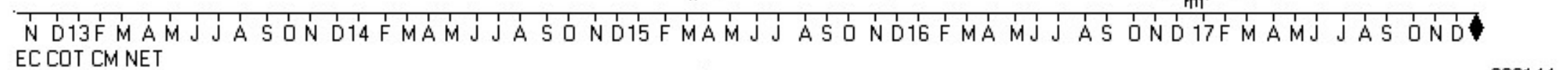


TSR Time Support/Resistance

51 EURUSD (Daily)

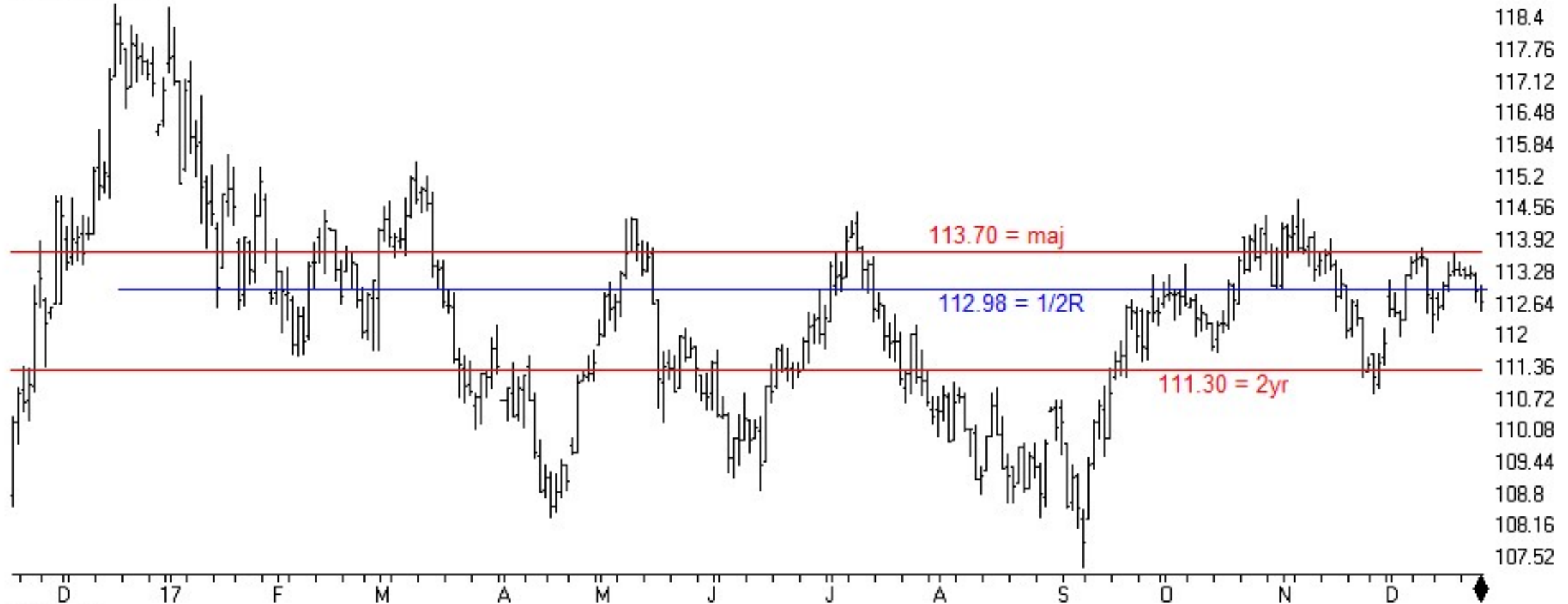


EURUSD	CM Net	CM Long	CM Short	LT Net	LT Long	LT Short	ST Net	ST Long	ST Short
12/26/17	7.9	65.4	100.0	57.5	50.2	46.4	100.0	51.0	0.0
12/19/17	26.3	93.4	100.0	49.9	29.2	40.7	100.0	21.6	0.0

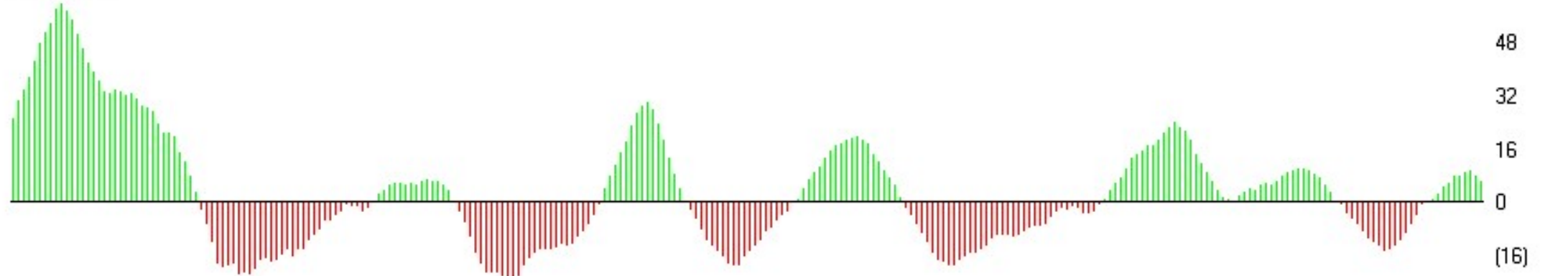




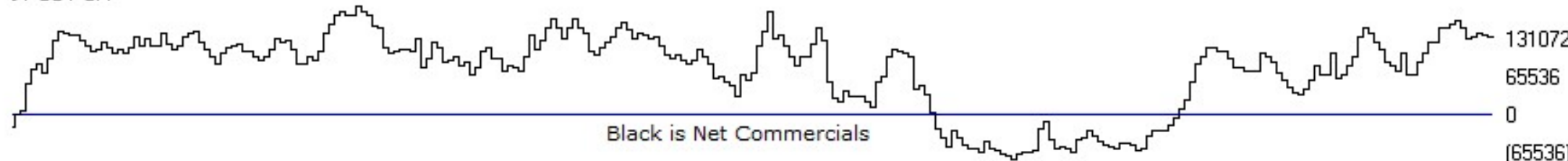
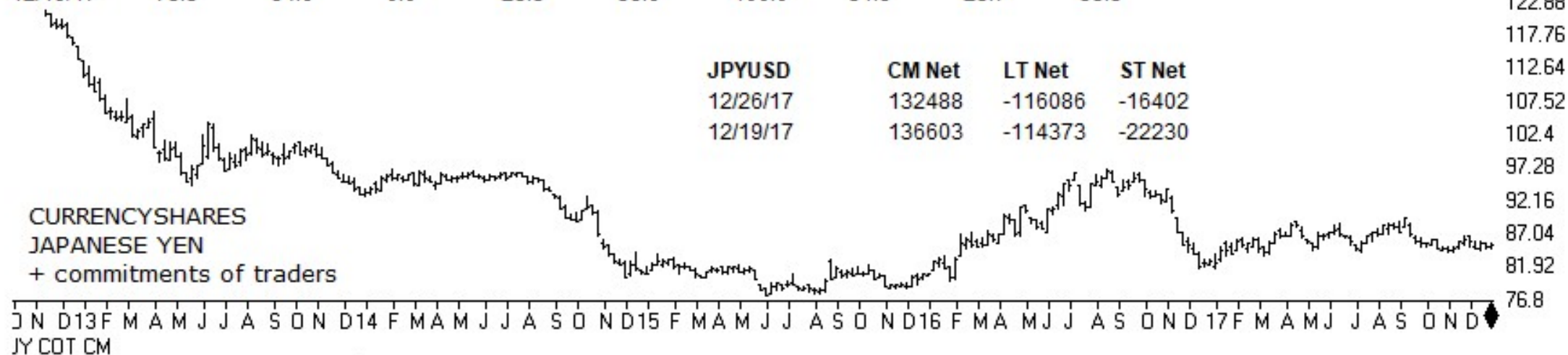
53 USDJPY (Daily)



CP PriceOsc



JPYUSD	CM Net	CM Long	CM Short	LT Net	LT Long	LT Short	ST Net	ST Long	ST Short
12/26/17	69.0	59.7	5.3	23.5	60.0	100.0	55.3	36.6	28.3
12/19/17	73.3	84.6	0.0	25.5	38.6	100.0	31.8	25.7	53.5



ChartProfit

<http://www.chartprofitwebcast.com>