

Charts to Friday 26th March 2021

Market Charts – Sentiment Analysis

Market Breadth - week ending 03/26

	-4	-3	-2	-1	↓
NYSE	64	72	83	78	77
NasDaq	68	62	74	66	58
SP500	55	65	78	77	85
R2000	73	73	85	76	68

number = % stocks >50day ma

Consensus Polls:

03/26: AAI Bull% was higher at 50.9%. The Bull% two-year high is at 55.8%, recorded in November. Bears% was lower at 20.6, the lowest since December 2019. The 4wk ma of nett (Bulls minus Bears) is at 24.12, the highest since early 2018.

03/26: Investors Intelligence Bulls% was higher at 57.4%. The nett (Bulls minus Bears) is at 38.6 having reached 48 in December, the highest since early 2018.

03/26: The NAAIM Exposure Index fell to 57.52.

Mutual Fund Flow:

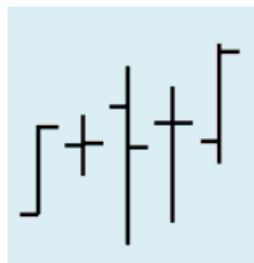
03/26: My version of the Rydex Assets Ratio reached 24.03 on Friday, **the highest since February '20**.

03/26: lipperusfundflows reported Equity Fund (inc ETF) inflows of \$10.9 Billion in the week to 24th March, another large inflow this week. The 4wk flow is at \$44.33 Billion, and three weeks ago reached \$52.93; there was only one 4wk flow higher than that, in Feb 2018. The **8wk flow number this week reached a massive \$85.93 Billion, the highest in the database**. Extreme reading.

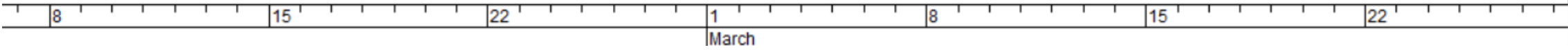
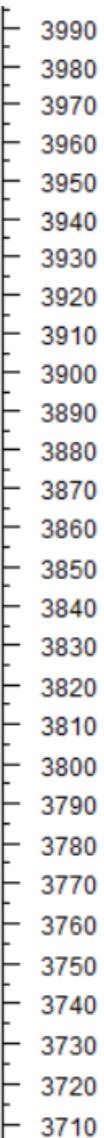
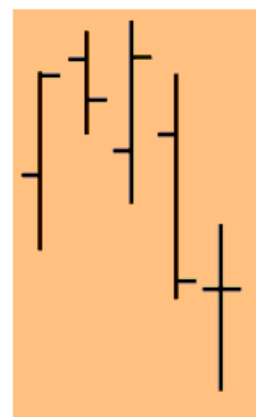
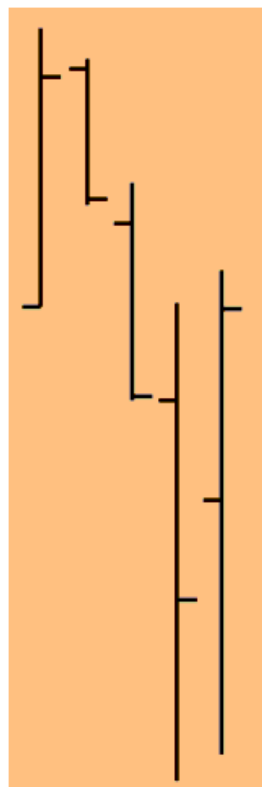
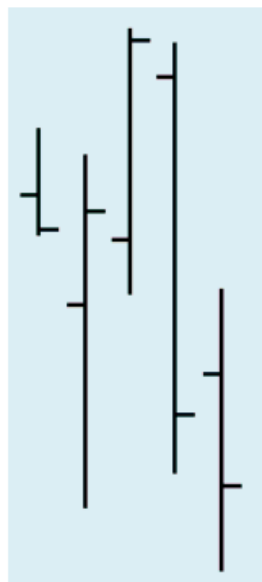
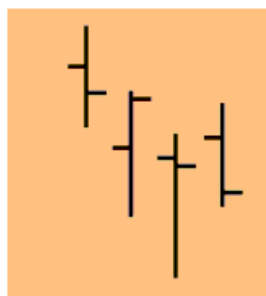
Options:

01/29: OCC Calls minus Puts 10day ma – On Thursday this reached the highest number I have in the database. Extreme reading.

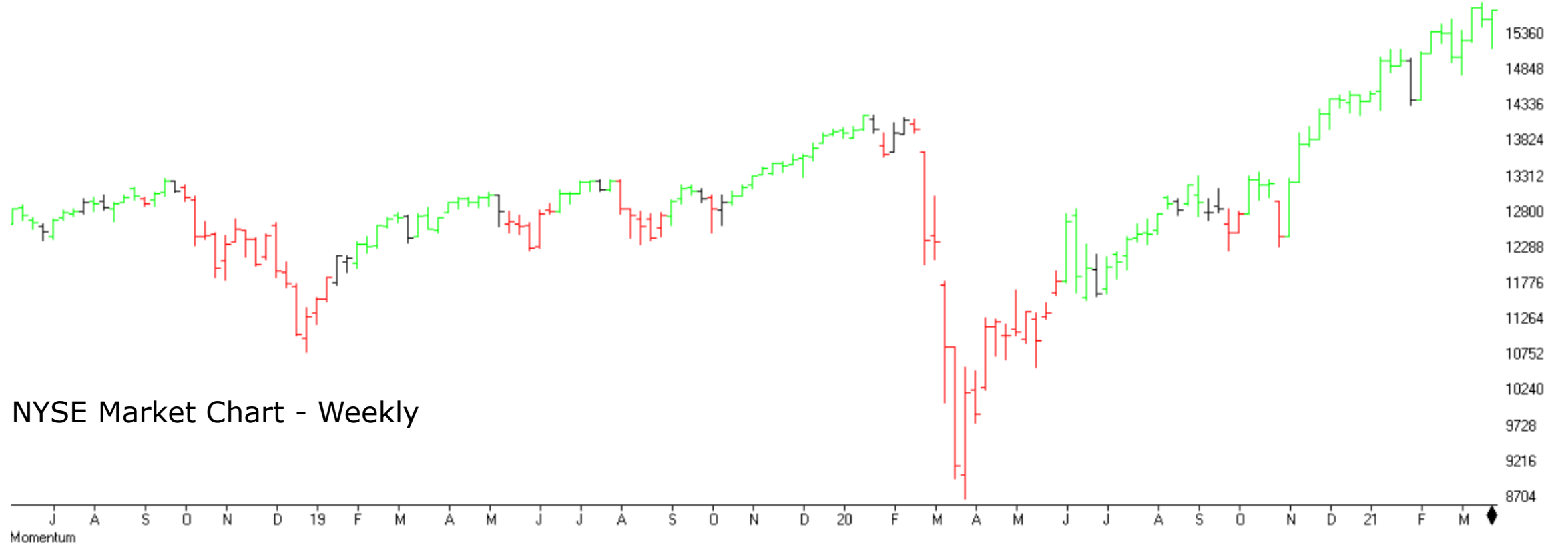
Weekly Structure



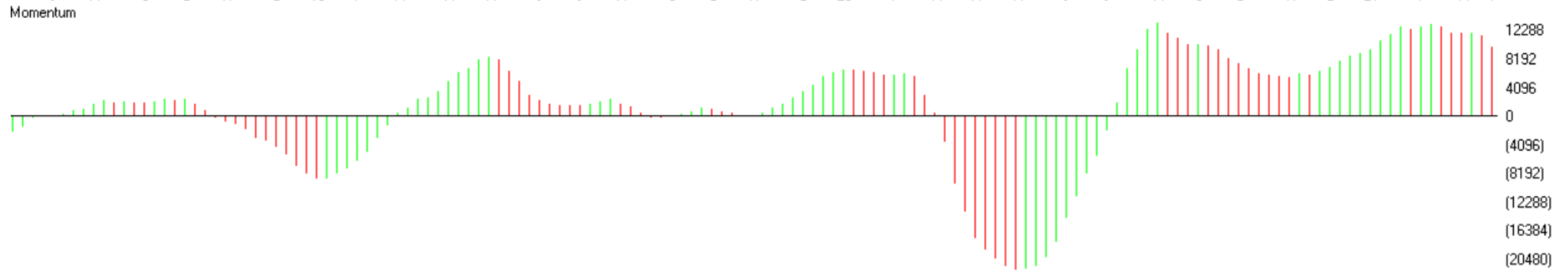
Buyers
Active



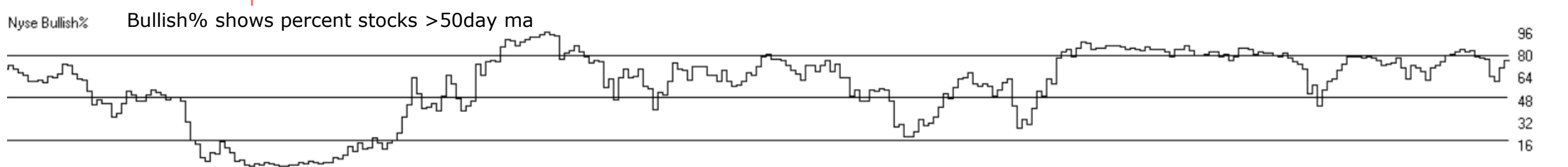
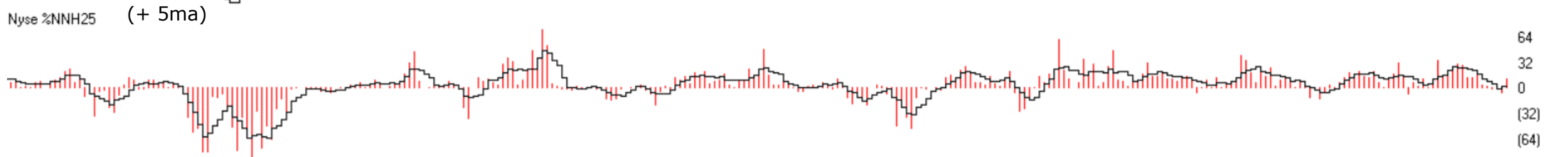
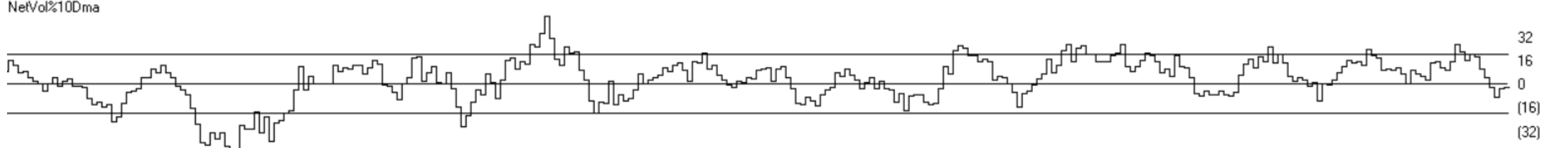
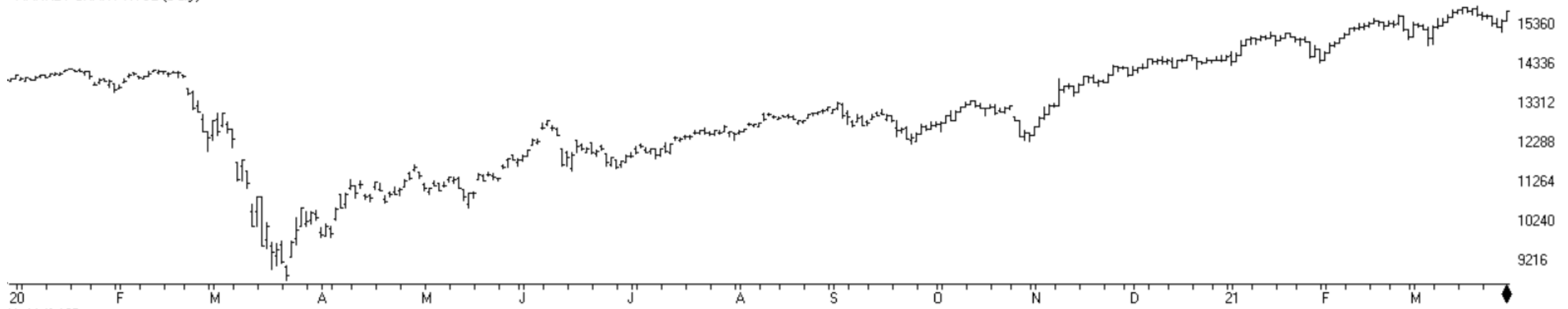
MARKET CHART NYSE (Weekly)



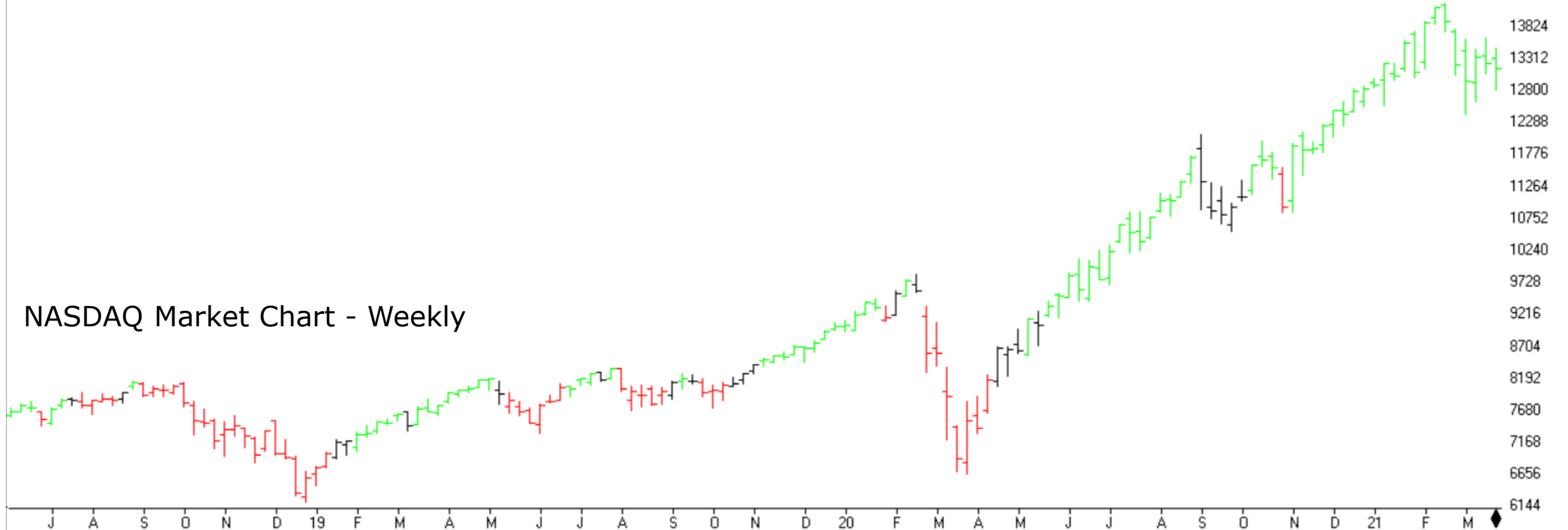
NYSE Market Chart - Weekly



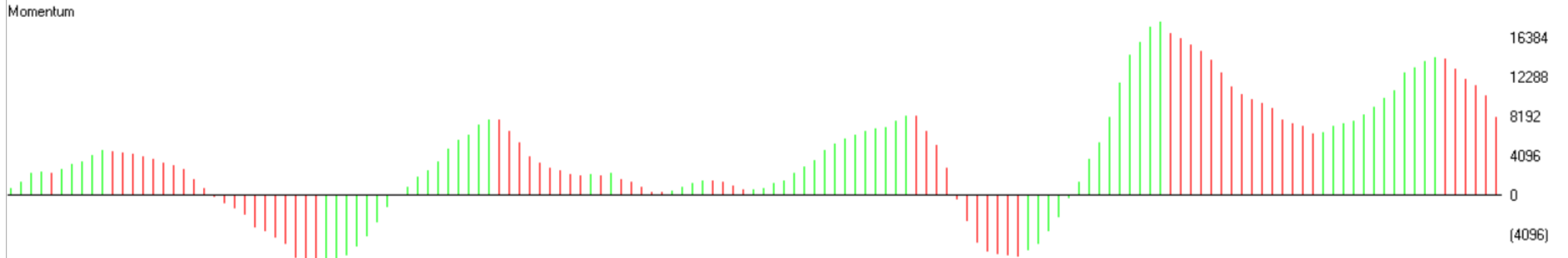
MARKET CHART NYSE (Daily)



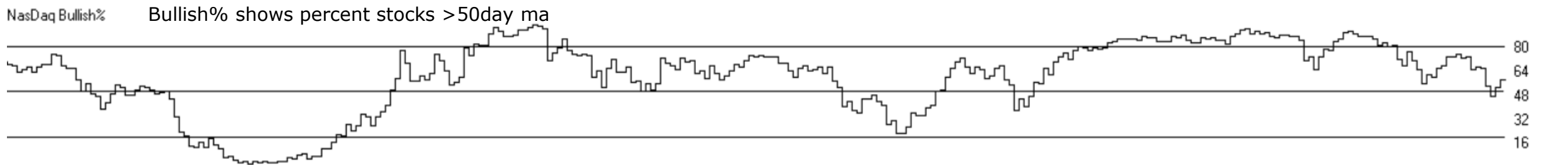
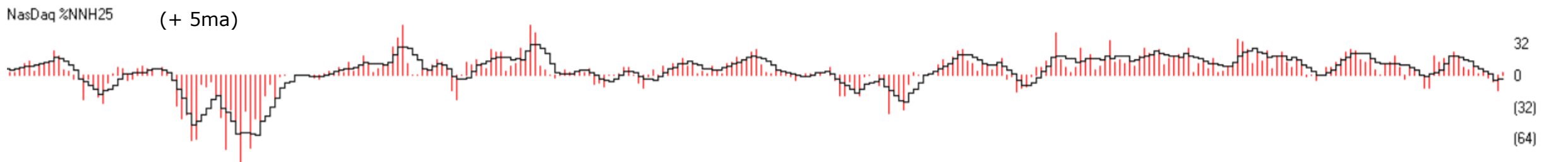
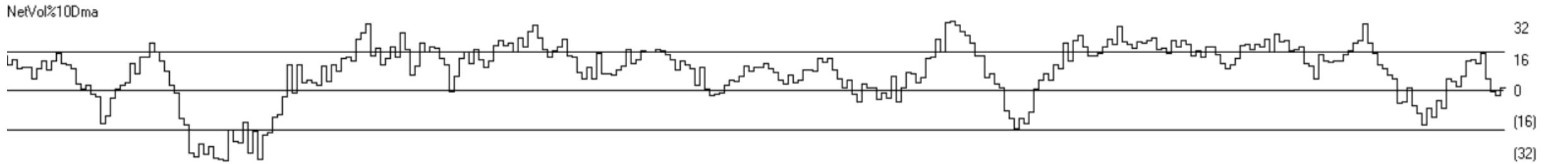
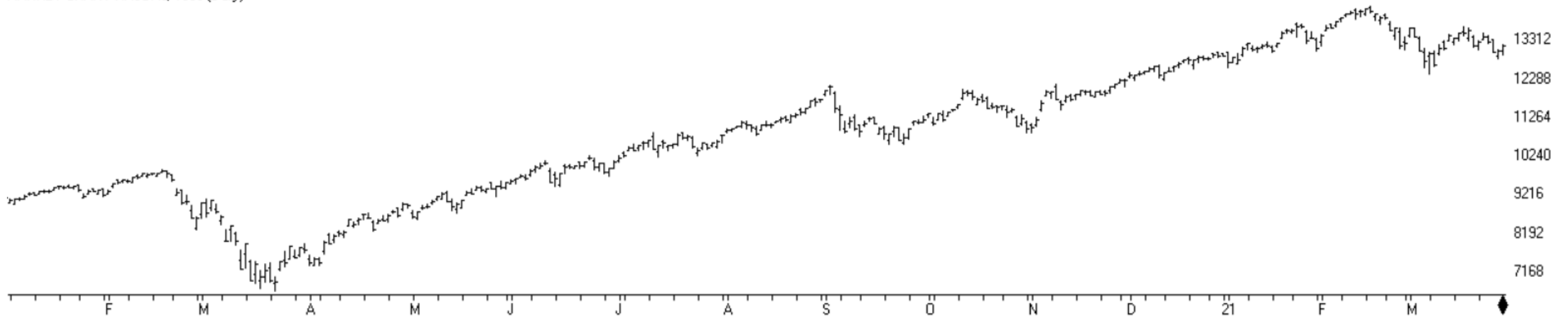
MARKET CHART NASDAQ 1800 (weekly)



NASDAQ Market Chart - Weekly

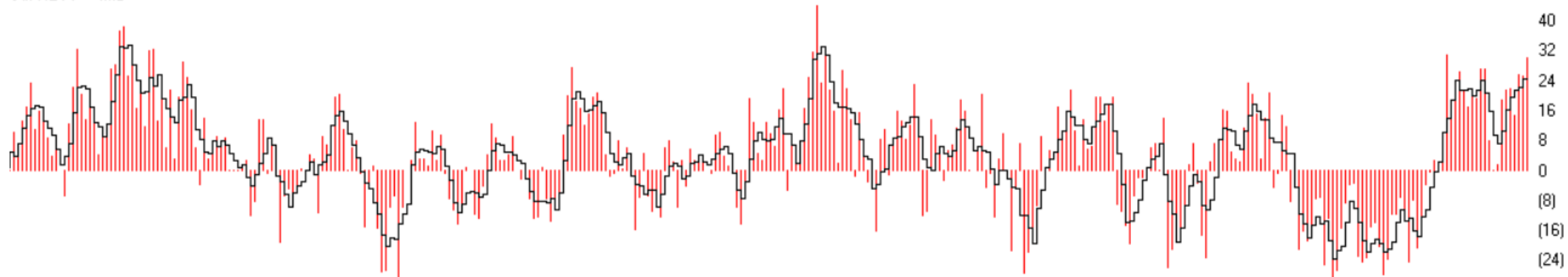
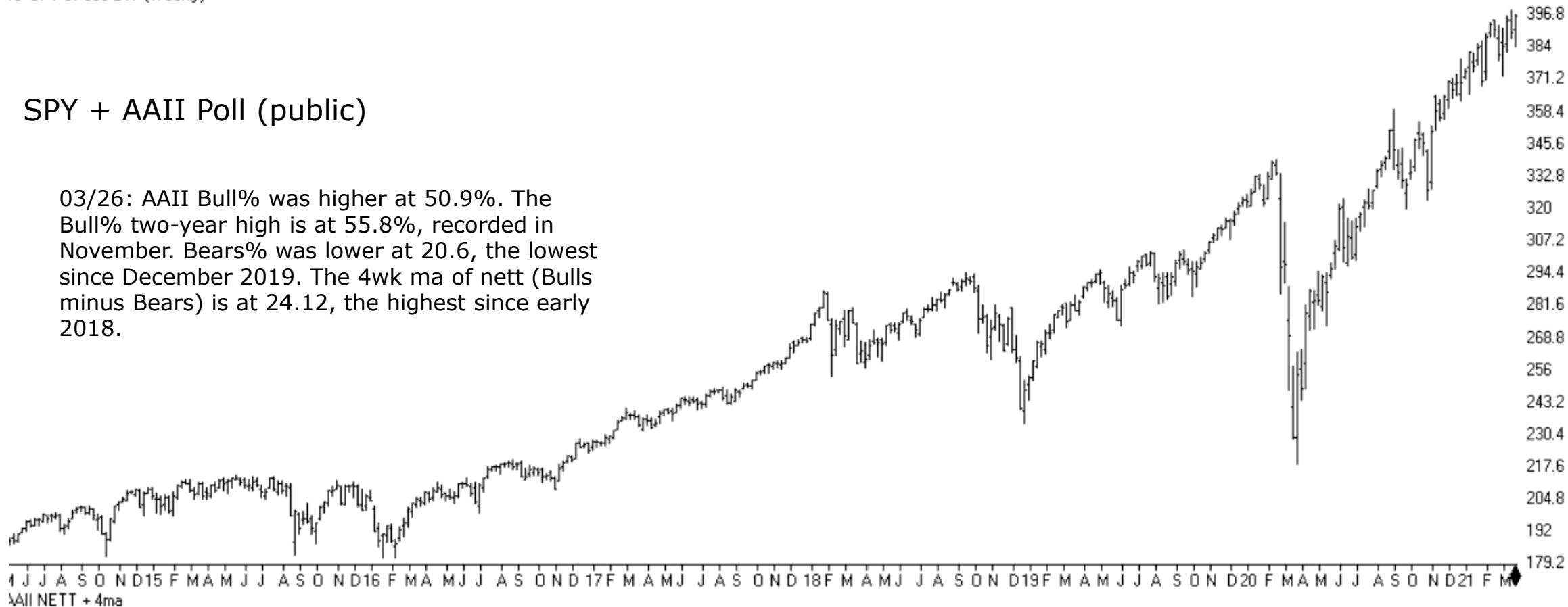


MARKET CHART NASDAQ 1800 (Daily)



SPY + AAI Poll (public)

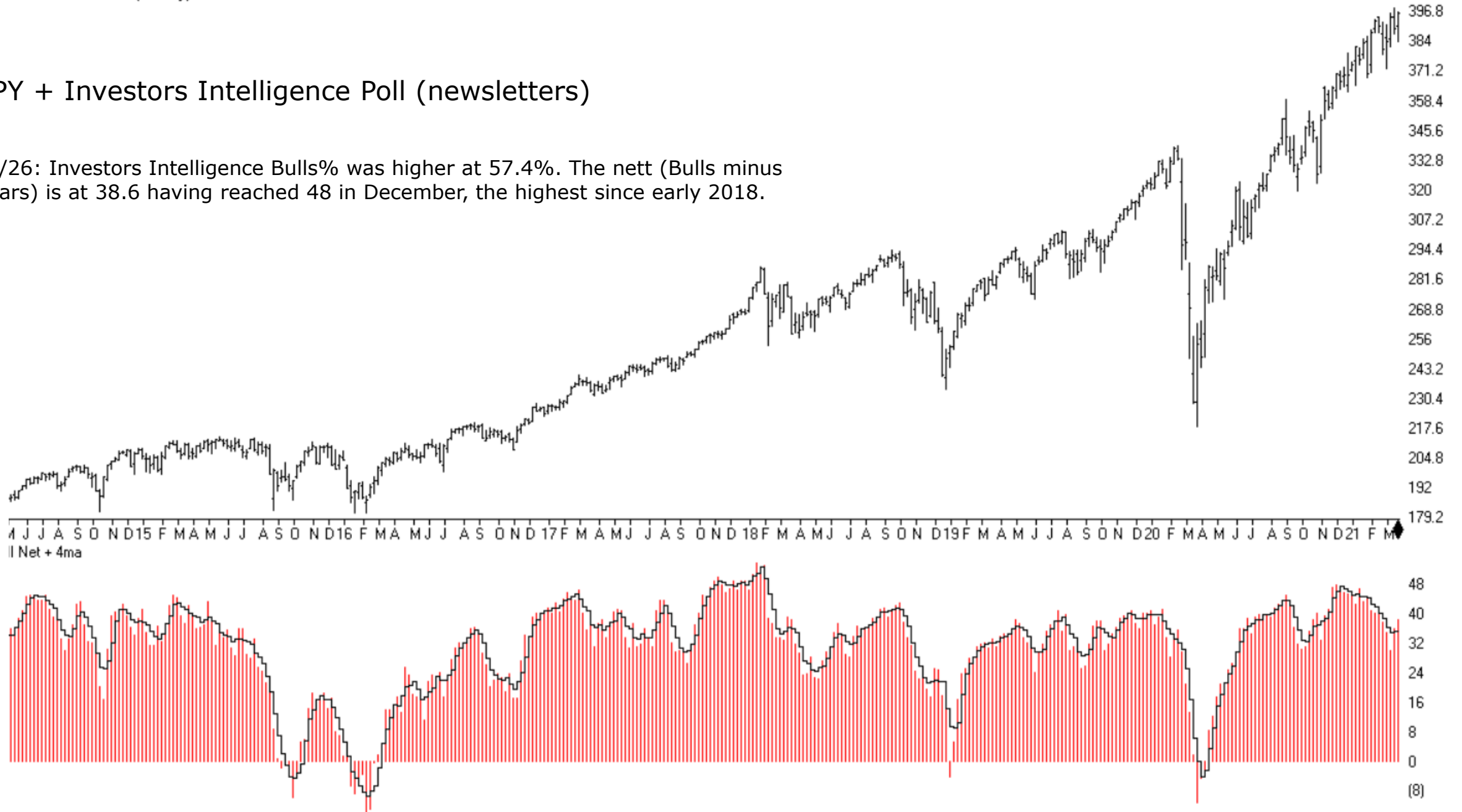
03/26: AAI Bull% was higher at 50.9%. The Bull% two-year high is at 55.8%, recorded in November. Bears% was lower at 20.6, the lowest since December 2019. The 4wk ma of nett (Bulls minus Bears) is at 24.12, the highest since early 2018.

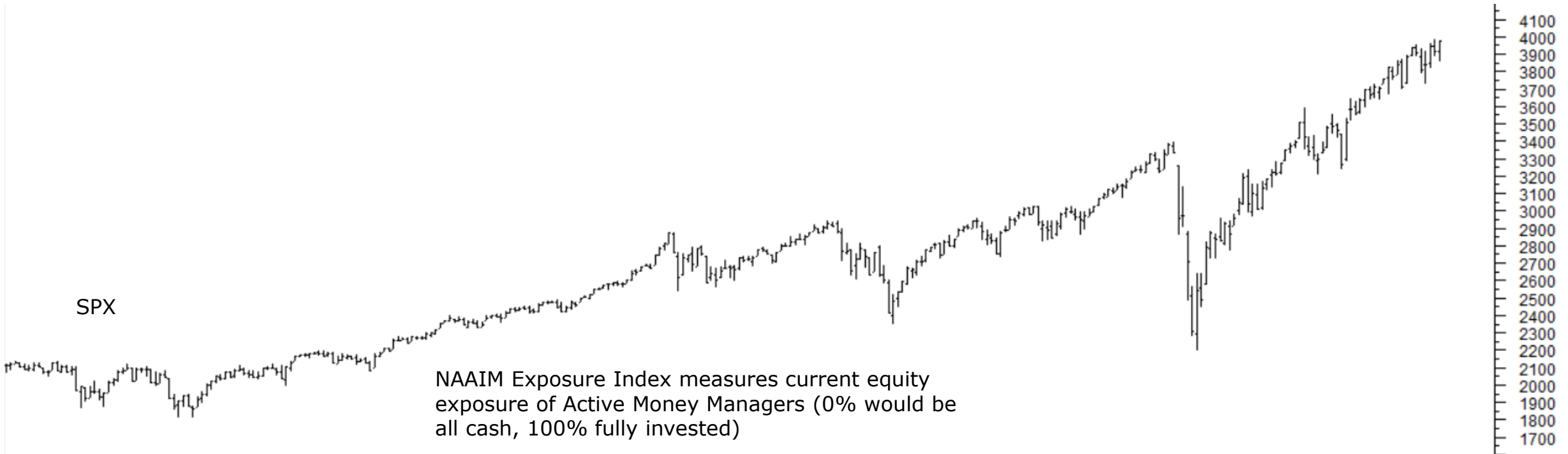


AAII nett + 4ma

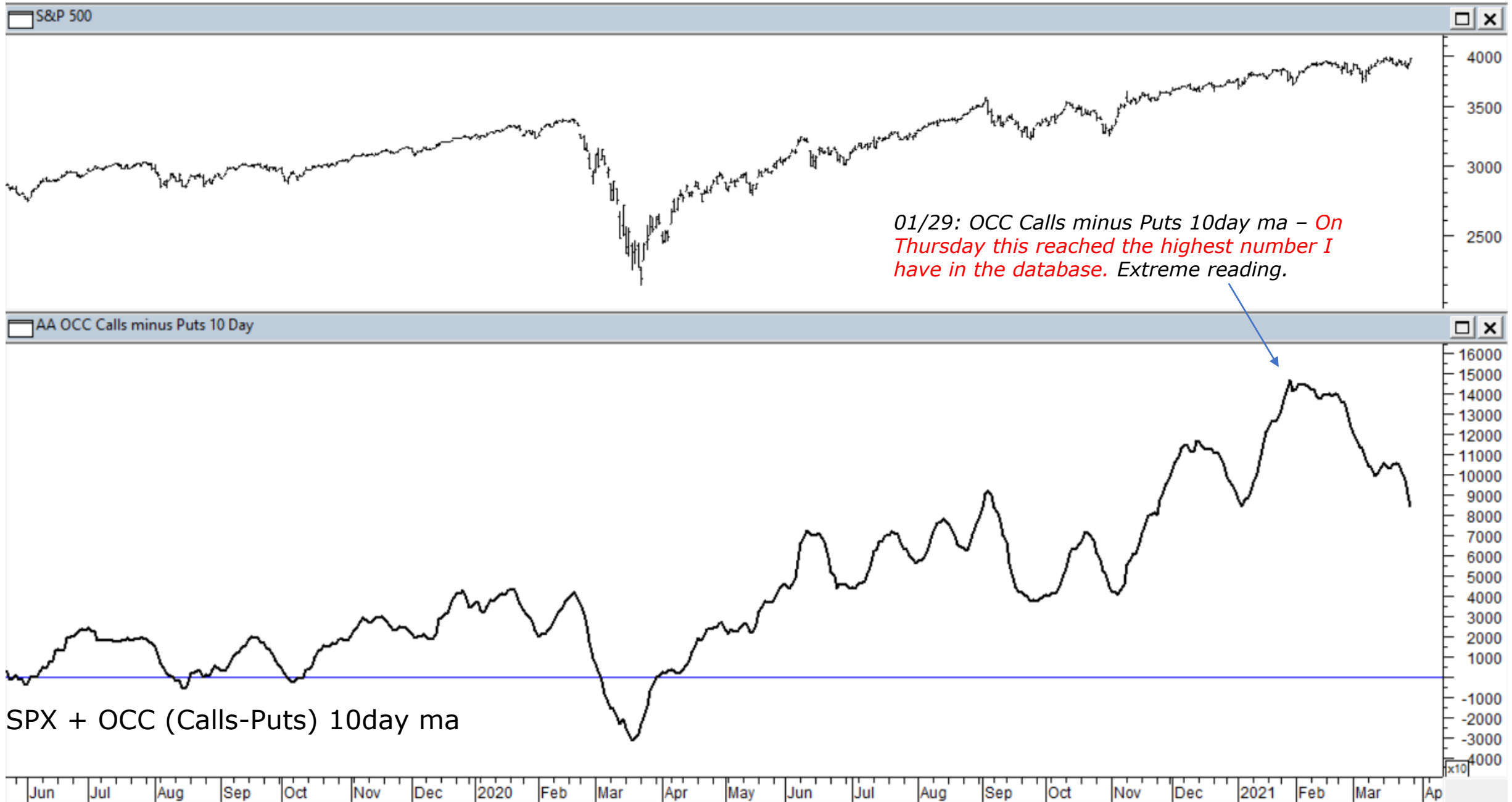
SPY + Investors Intelligence Poll (newsletters)

03/26: Investors Intelligence Bulls% was higher at 57.4%. The nett (Bulls minus Bears) is at 38.6 having reached 48 in December, the highest since early 2018.

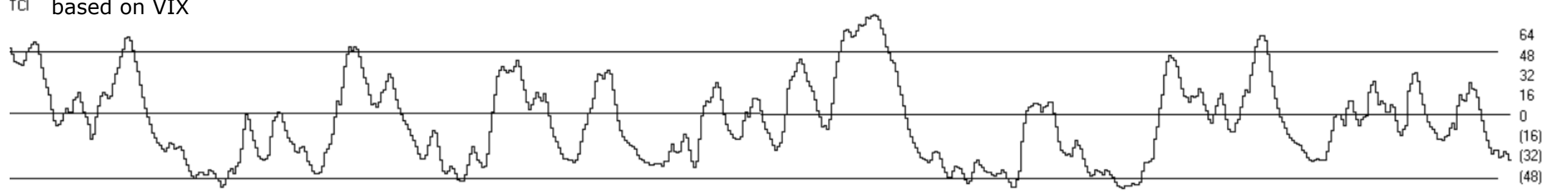
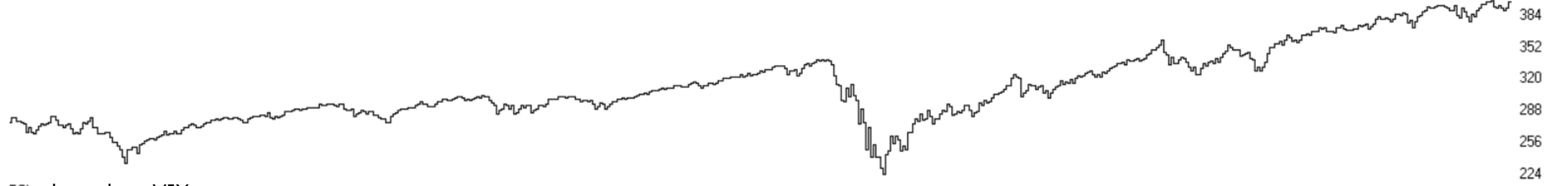
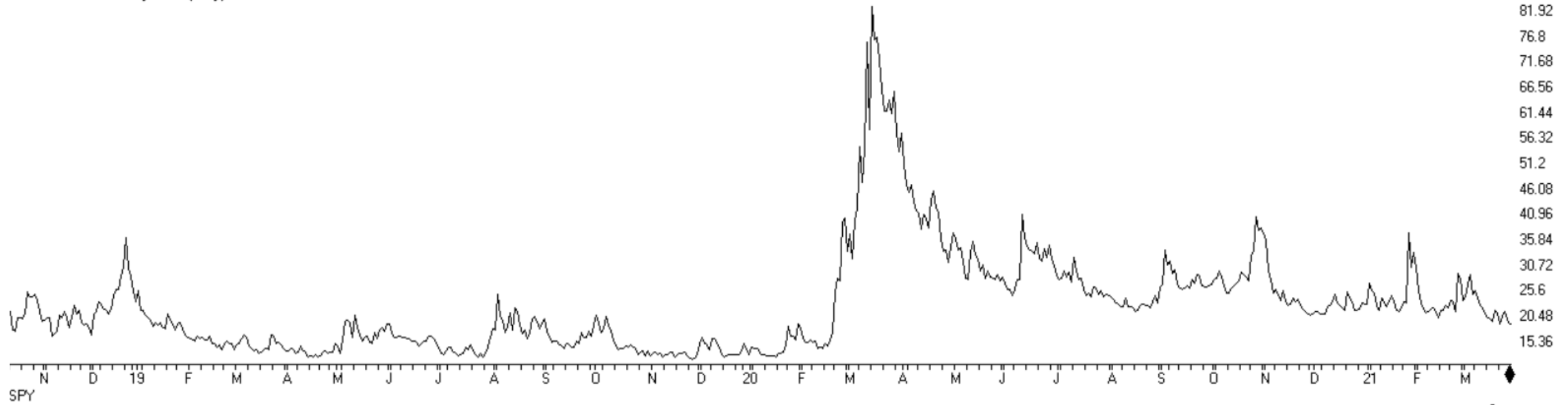




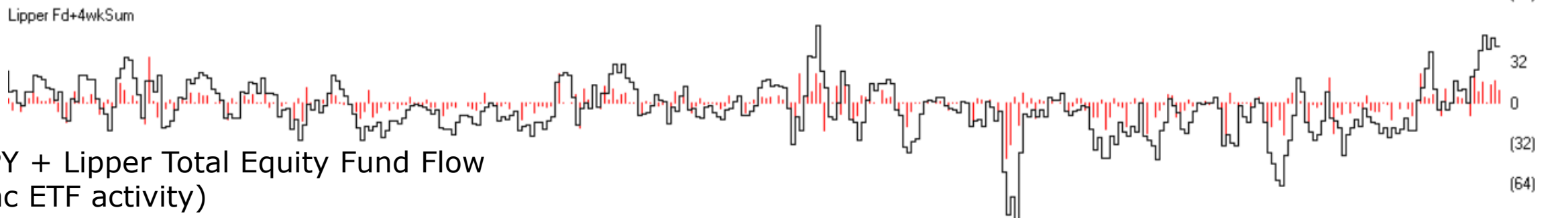
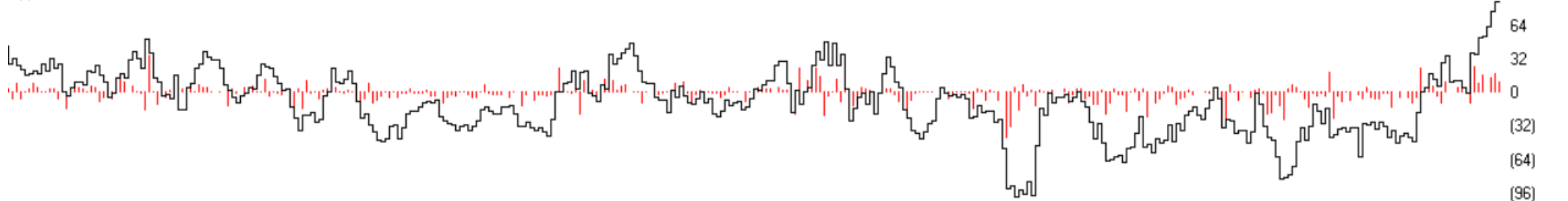
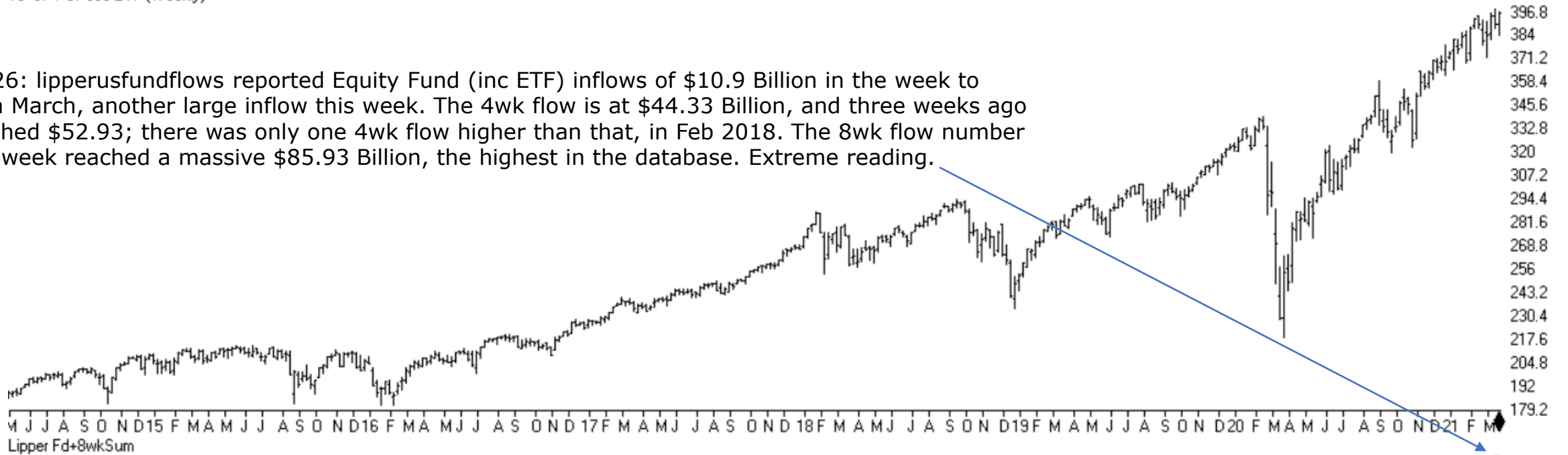
M J J A S O N D 2016 A M J J A S O N D 2017 A M J J A S O N D 2018 A M J J A S O N D 2019 A M J J A S O N D 2020 A M J J A S O N D 2021 A M J



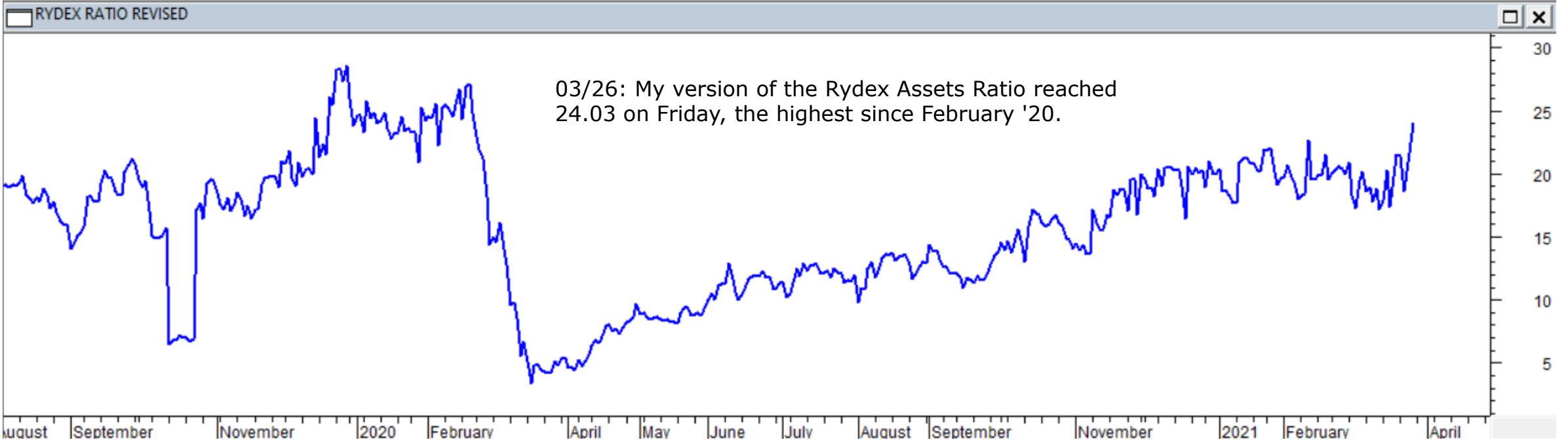
VIX - S&P 500 Volatility Index (Daily)



03/26: lipperusfundflows reported Equity Fund (inc ETF) inflows of \$10.9 Billion in the week to 24th March, another large inflow this week. The 4wk flow is at \$44.33 Billion, and three weeks ago reached \$52.93; there was only one 4wk flow higher than that, in Feb 2018. The 8wk flow number this week reached a massive \$85.93 Billion, the highest in the database. Extreme reading.



SPY + Lipper Total Equity Fund Flow (inc ETF activity)



ChartProfit