

Charts to Friday 14th May 2021

Market Charts – Sentiment Analysis

Market Breadth - week ending 05/14

	-4	-3	-2	-1	↓
NYSE	79	75	72	79	74
NasDaq	64	62	55	58	51
SP500	88	84	82	85	80
R2000	69	67	59	64	58

number = % stocks >50day ma

Consensus Polls:

05/14: AAI Bull% was lower at 36.5%, the lowest since November. Down from 56.9% just five weeks ago, the highest since January 2018. Bears% was higher, at 27.0. Up from 20.4 reached five weeks ago, the lowest since May 2019. The 4wk ma of nett (Bulls minus Bears) is at 19.95, down from 30.12 three weeks ago, the highest since early 2018.

05/14: Investors Intelligence Bulls% was lower at 58.6%. Bears% was higher 17.2%, up from 16.5% two weeks ago, the lowest since September last year.

05/14: The NAAIM Exposure Index was sharply lower at 46.86, down from 87.79, and a 12month low.

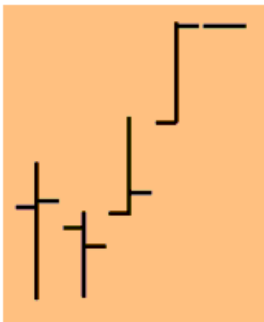
Mutual Fund Flow:

05/14: My version of the Rydex Assets Ratio ended the week at 24.49. On 04/26 the ratio reached 30.77. This is the highest ratio ever and a truly extreme reading.

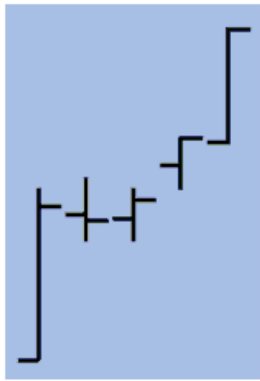
05/14: lipperusfundflows reported Equity Fund (inc ETF) inflows of \$9 billion in the week to 12th May, the highest single week inflow for nine weeks. The 8wk flow number is at \$32.26 Billion but six weeks ago reached a massive \$99.53 Billion, the highest in the database.

Weekly Structure

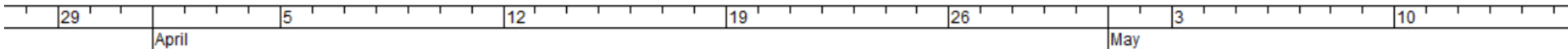
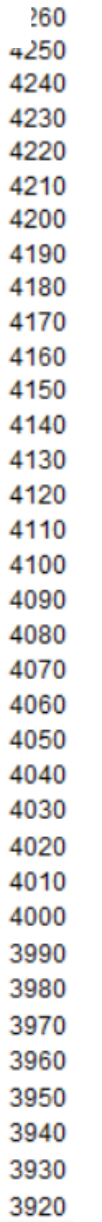
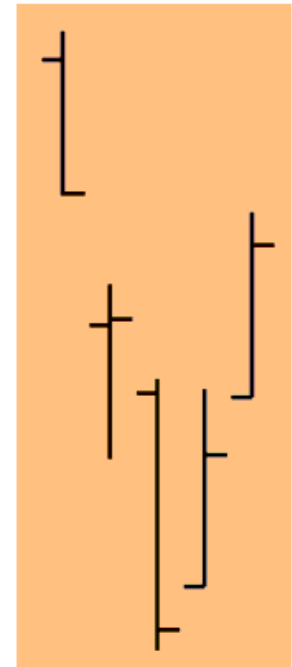
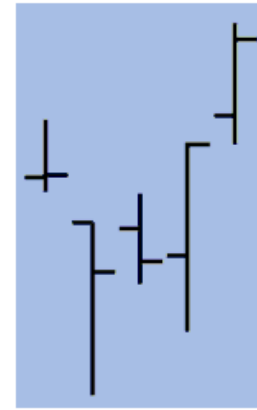
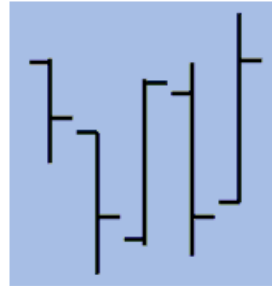
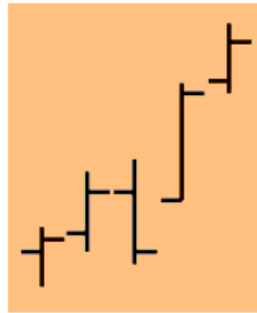
Buyers
Active

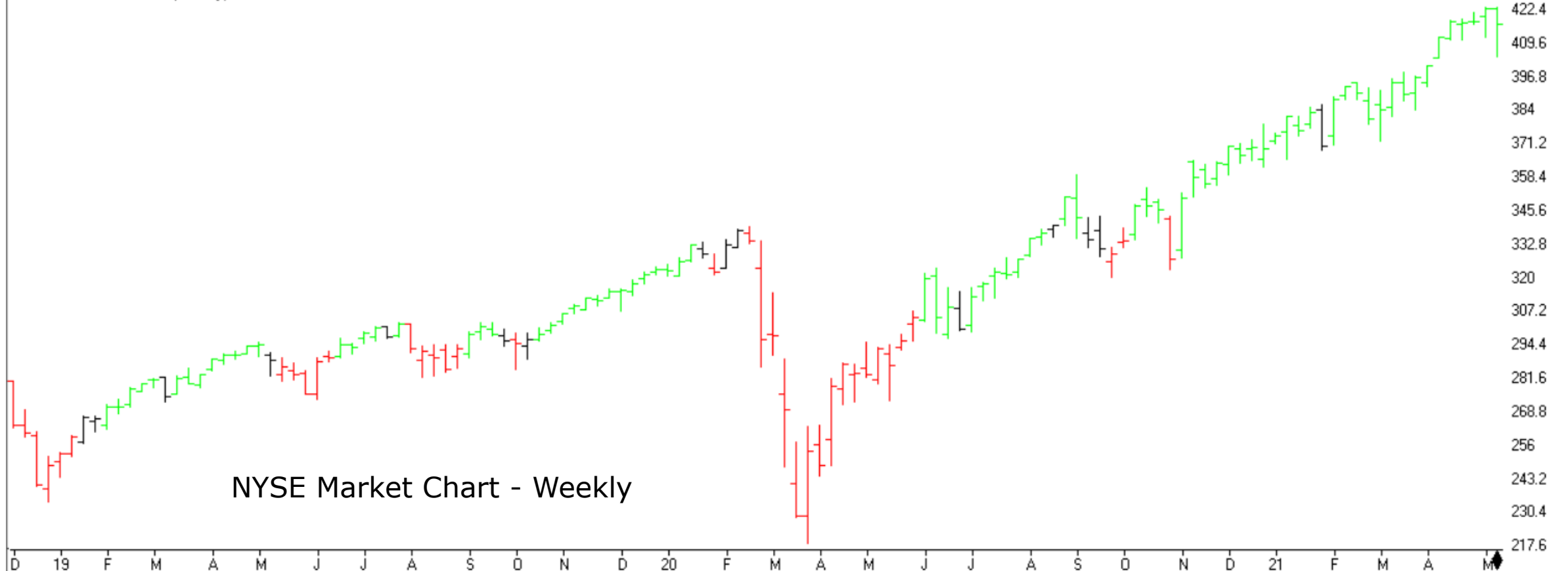


Buyers
Active

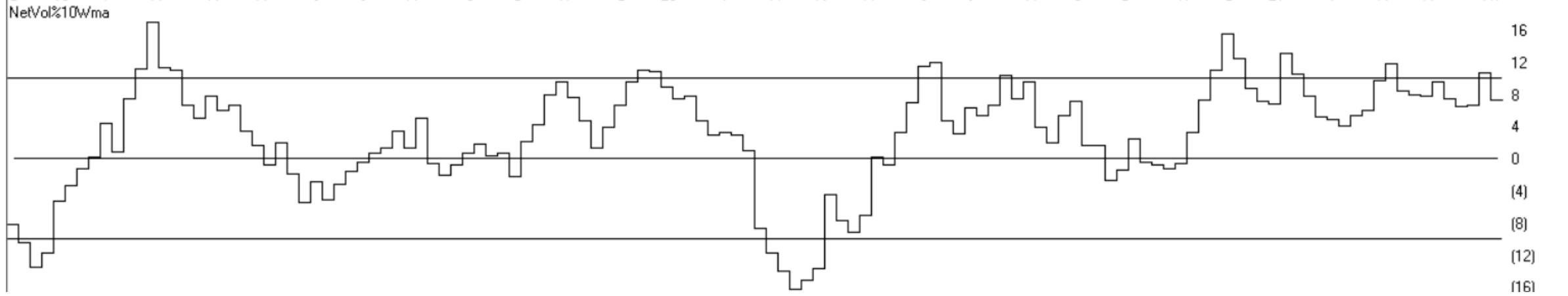


Buyers
Active

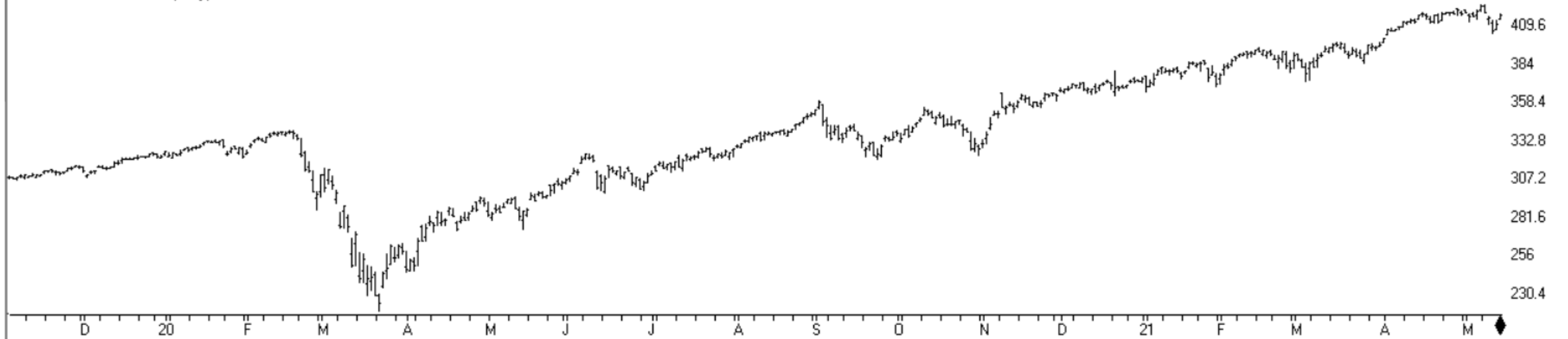




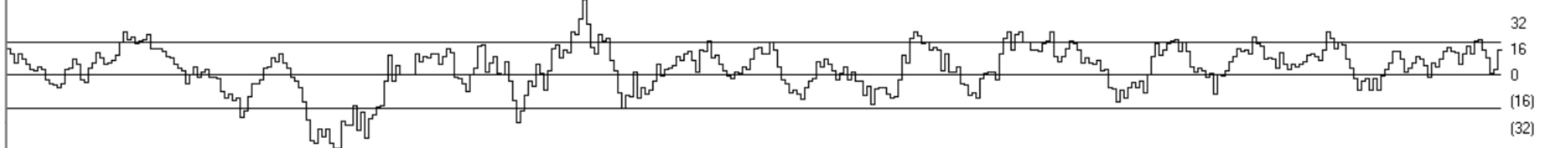
NYSE Market Chart - Weekly



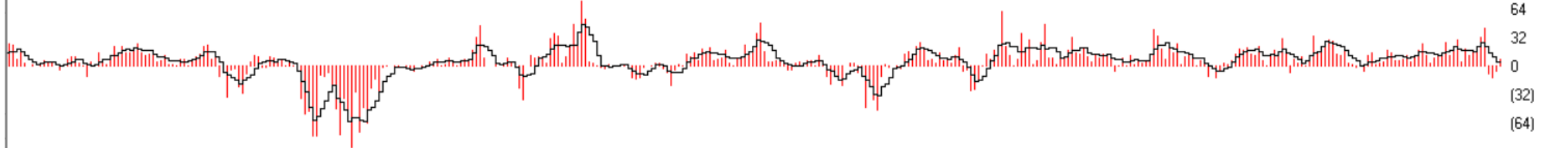
MARKET CHART NYSE (Daily)



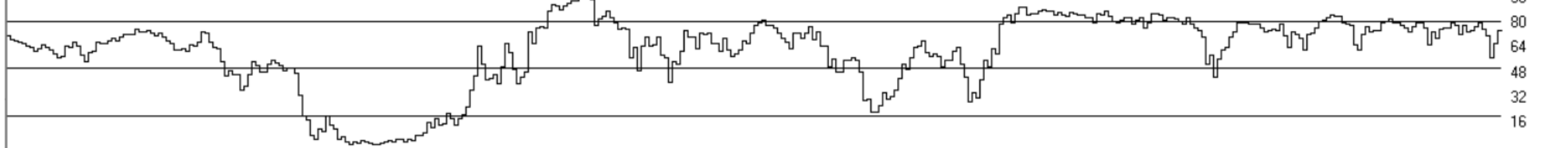
NetVol%10Dma

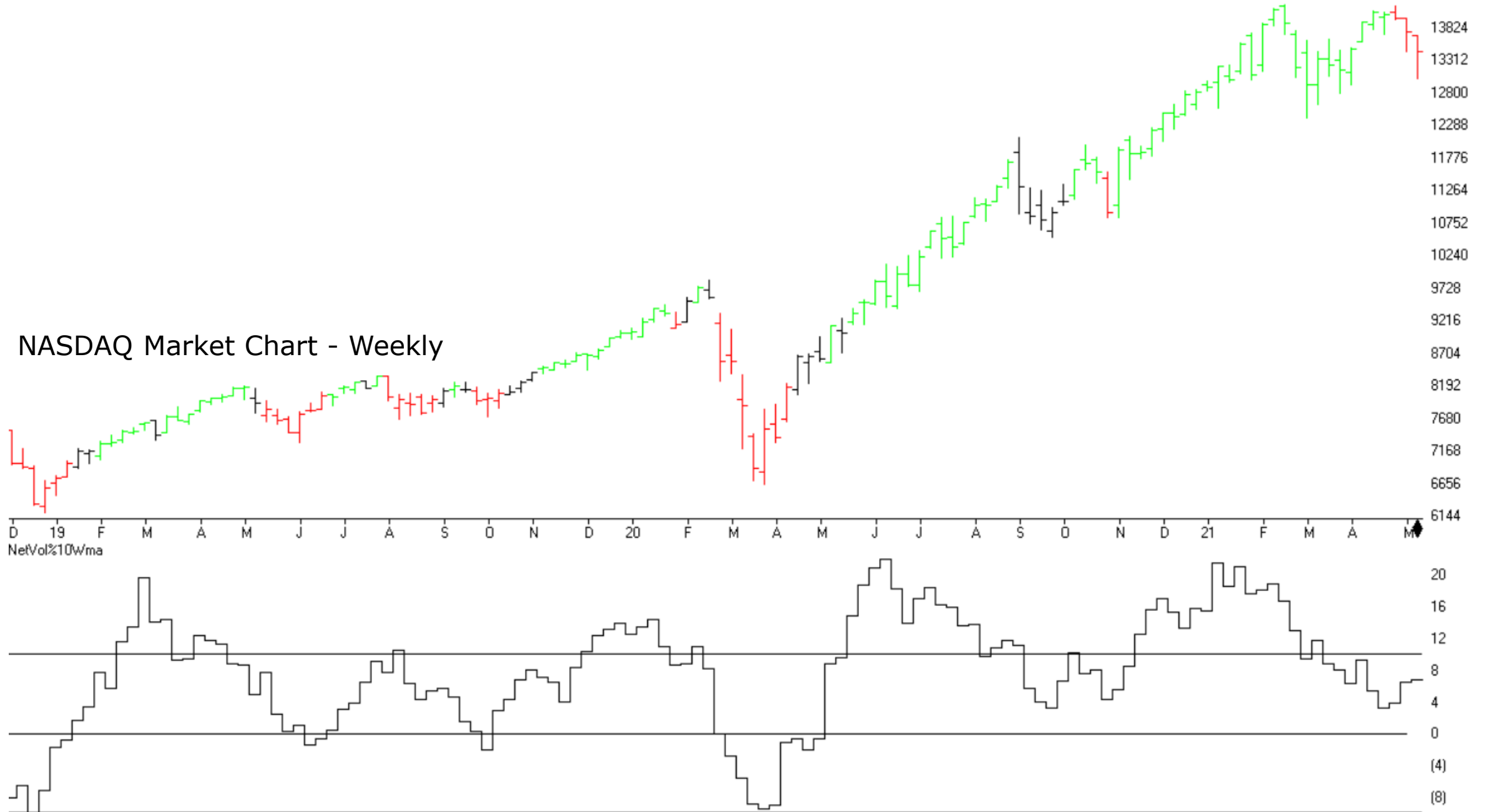


Nyse %NNH25 (+ 5ma)

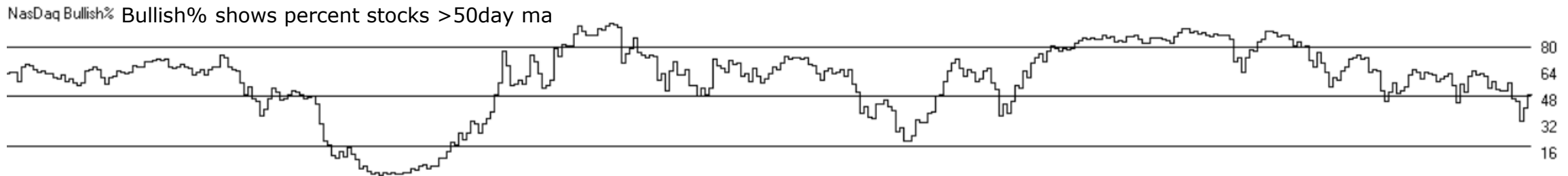
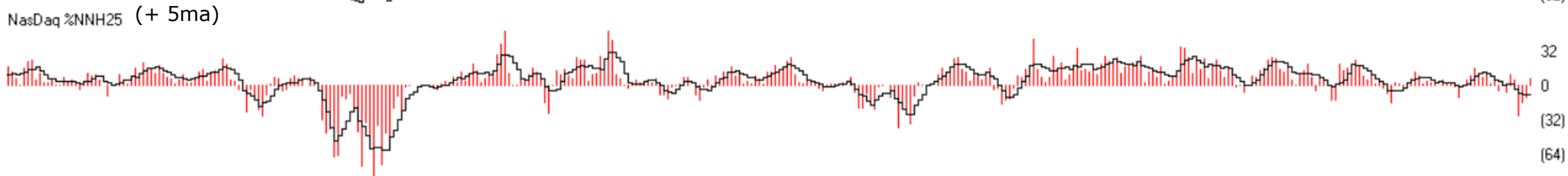
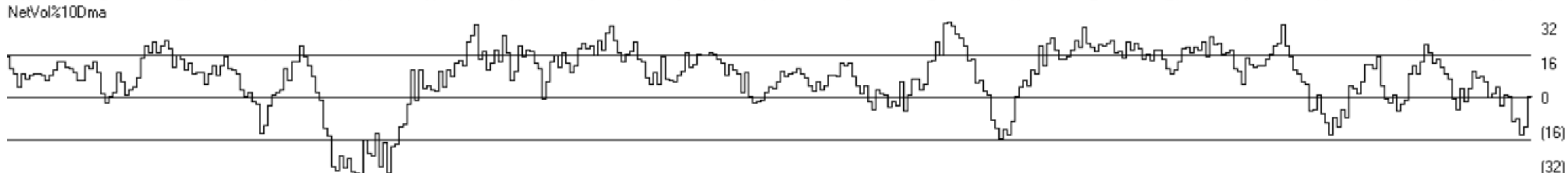
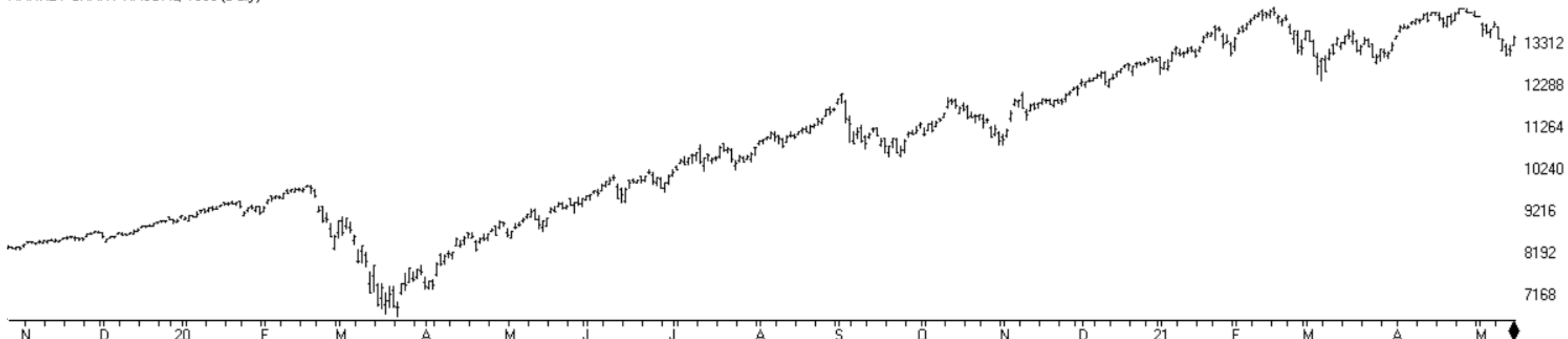


Nyse Bullish% Bullish% shows percent stocks >50day ma



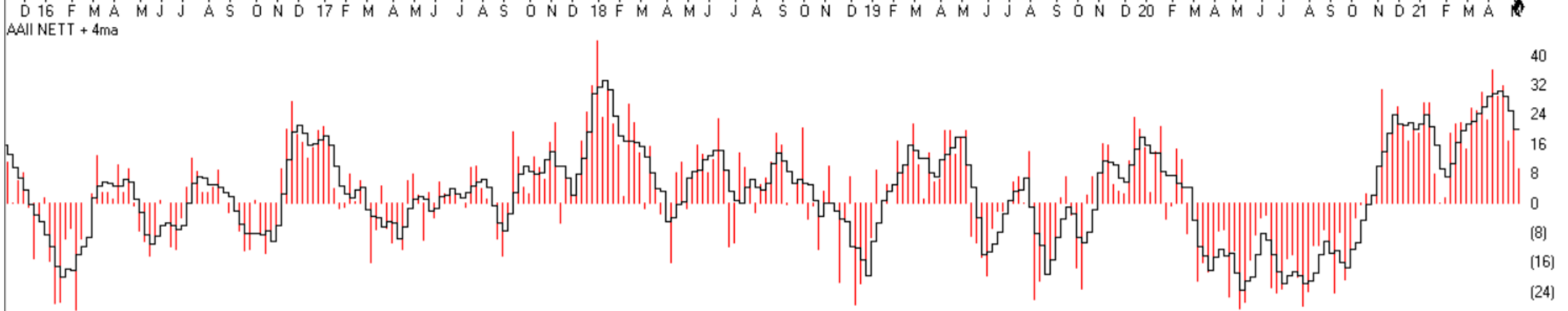
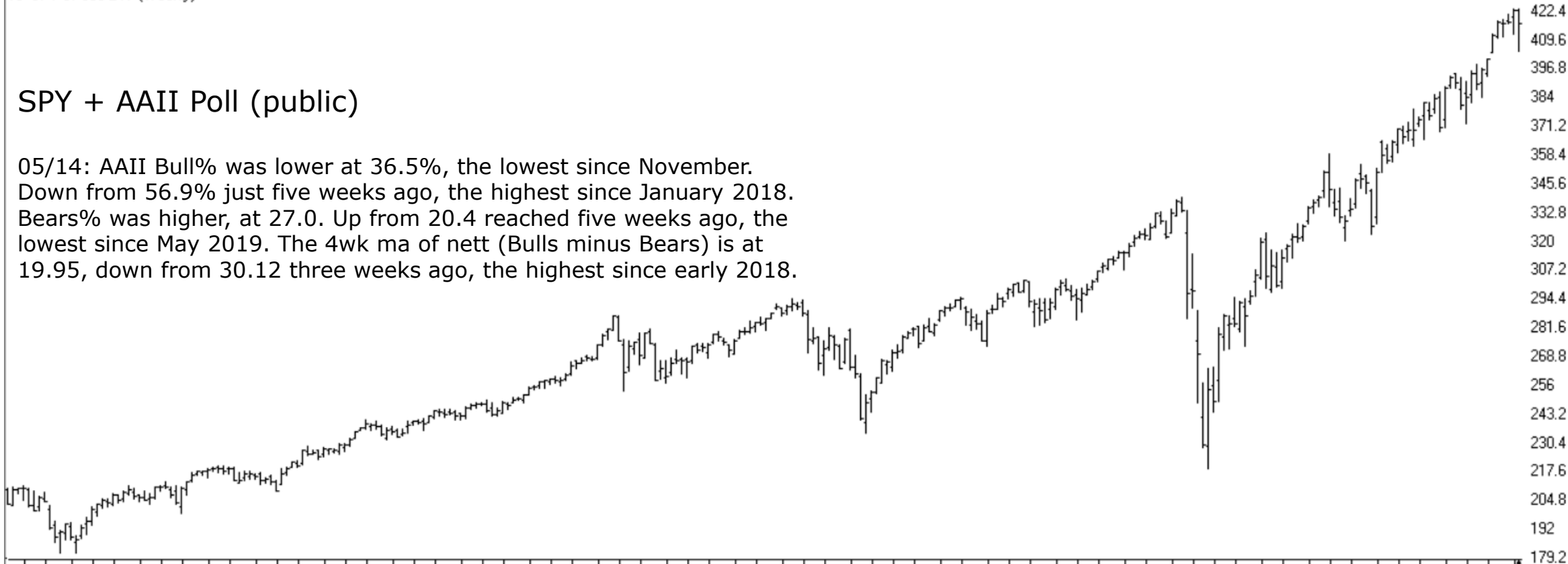


MARKET CHART NASDAQ 1800 (Daily)



SPY + AAI Poll (public)

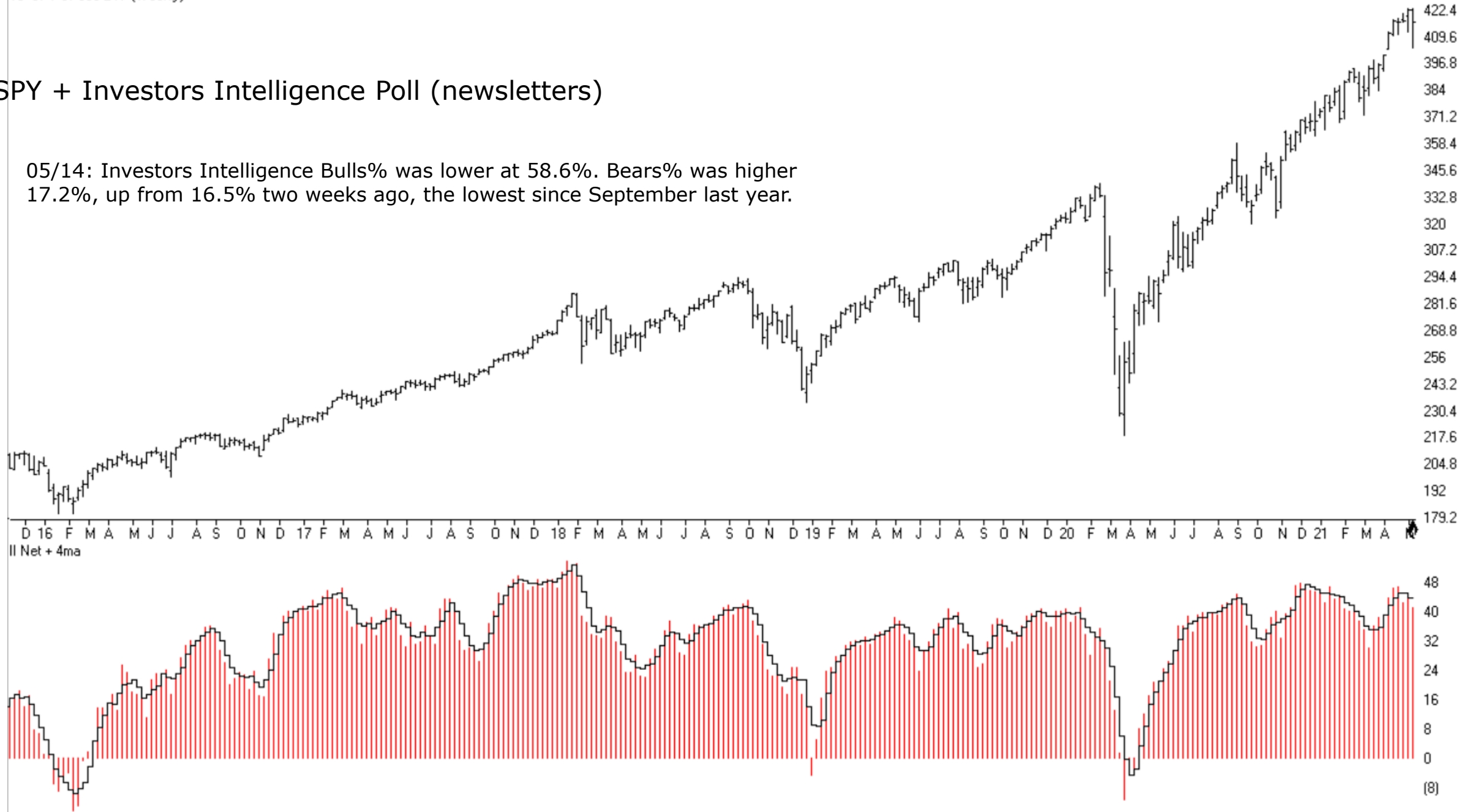
05/14: AAI Bull% was lower at 36.5%, the lowest since November. Down from 56.9% just five weeks ago, the highest since January 2018. Bears% was higher, at 27.0. Up from 20.4 reached five weeks ago, the lowest since May 2019. The 4wk ma of nett (Bulls minus Bears) is at 19.95, down from 30.12 three weeks ago, the highest since early 2018.



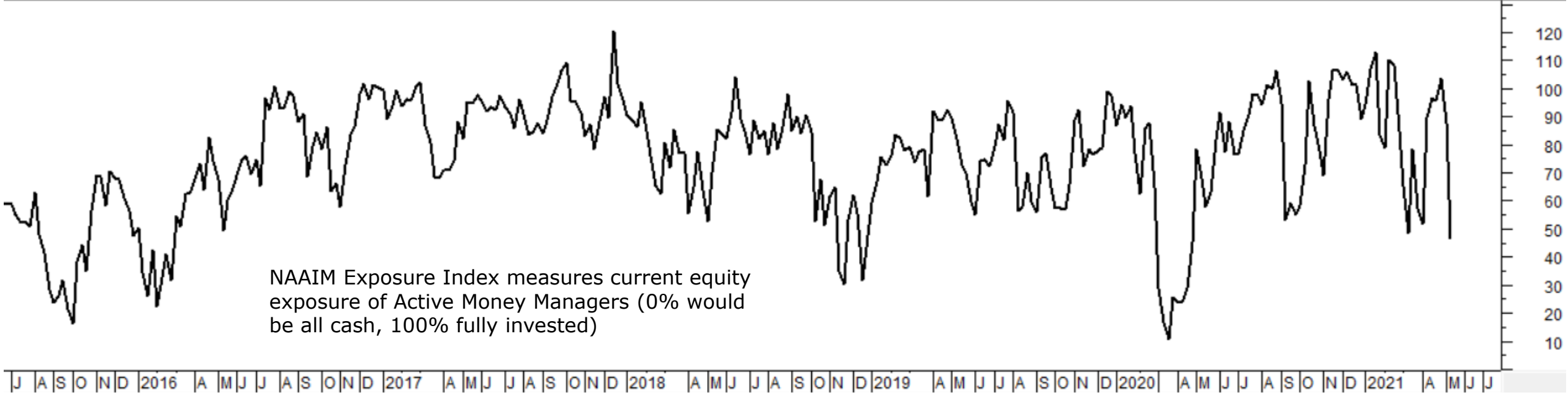
AAII nett + 4ma

SPY + Investors Intelligence Poll (newsletters)

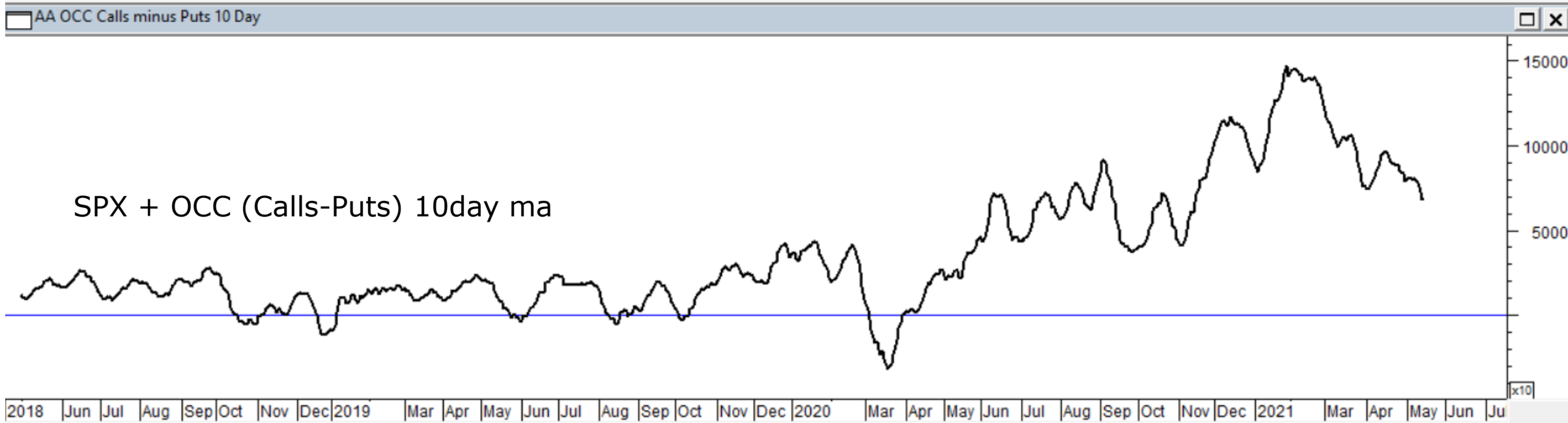
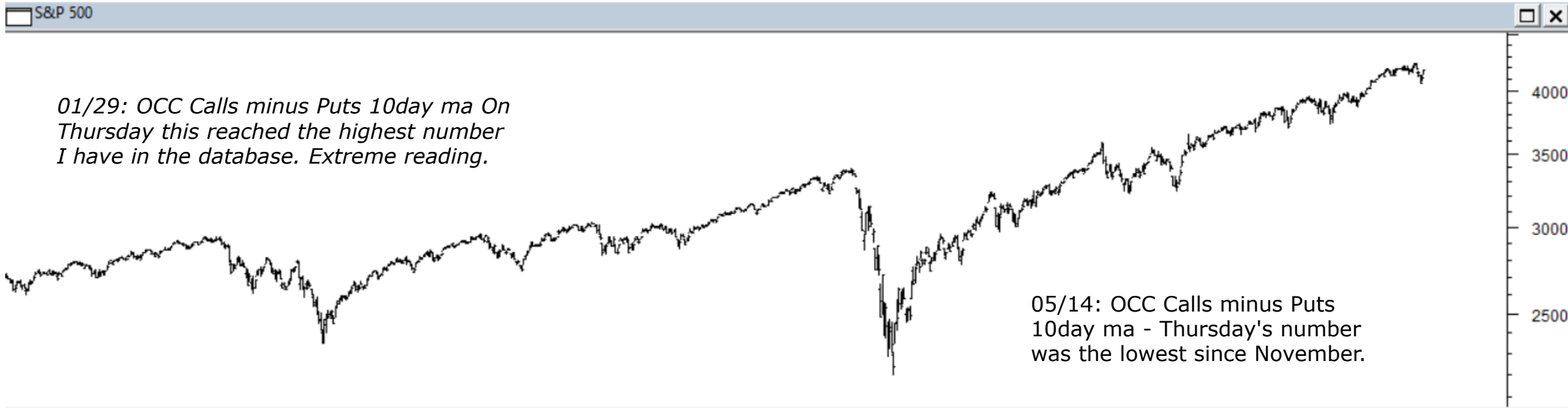
05/14: Investors Intelligence Bulls% was lower at 58.6%. Bears% was higher 17.2%, up from 16.5% two weeks ago, the lowest since September last year.



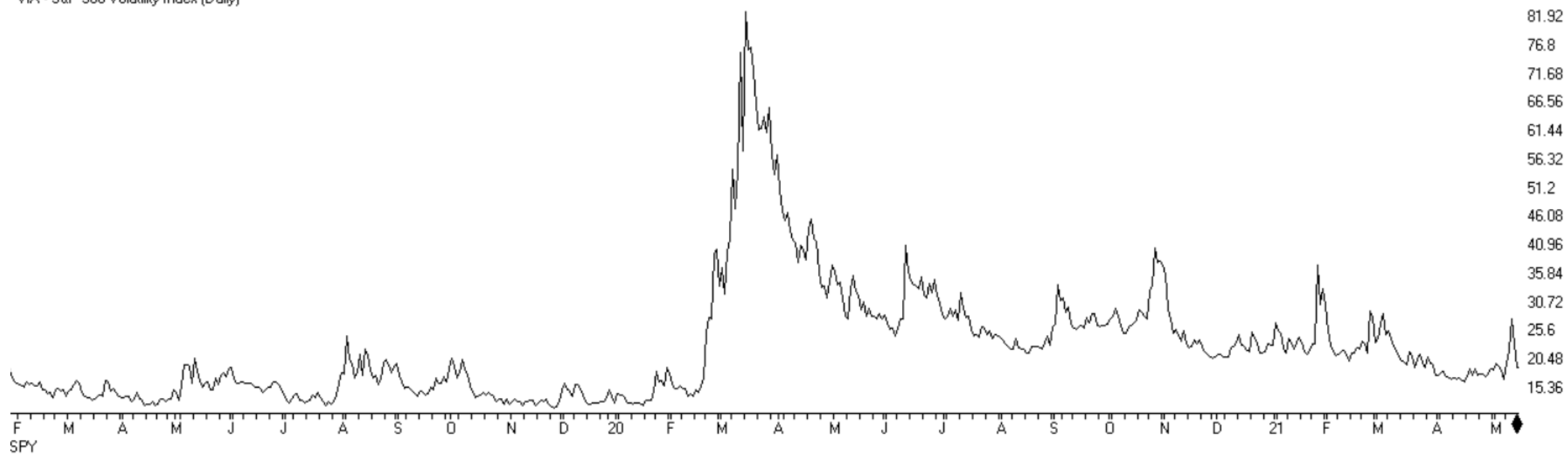
05/14: The NAAIM Exposure Index was sharply lower at 46.86, down from 87.79, and a 12month low.



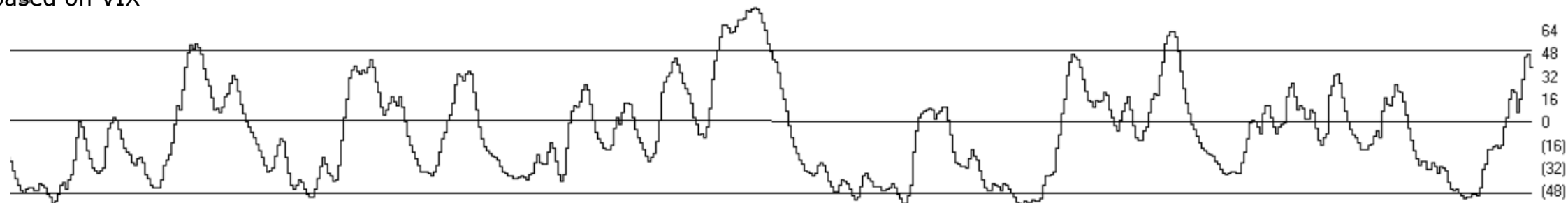
J A S O N D 2016 A M J J A S O N D 2017 A M J J A S O N D 2018 A M J J A S O N D 2019 A M J J A S O N D 2020 A M J J A S O N D 2021 A M J J



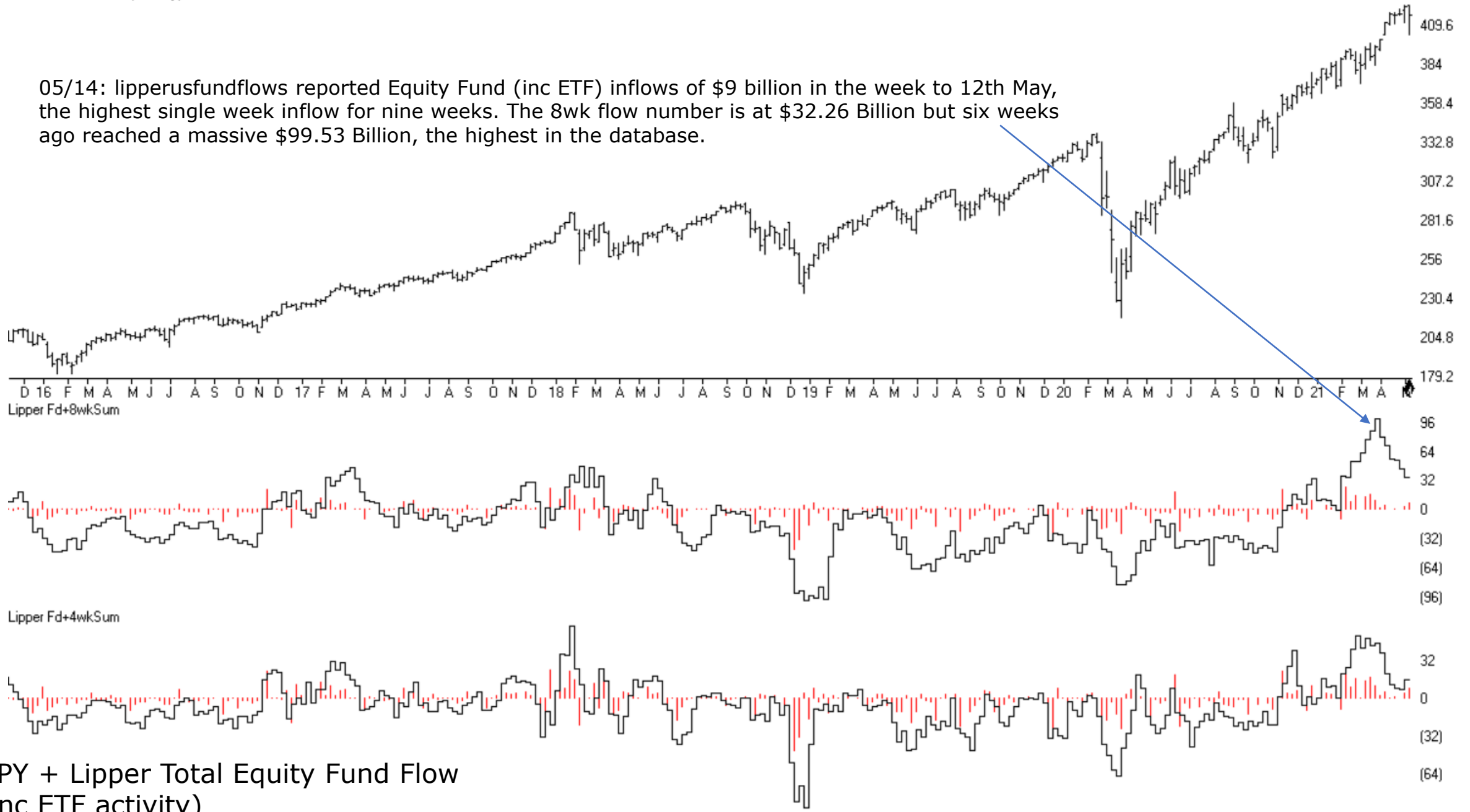
VIX - S&P 500 Volatility Index (Daily)



based on VIX

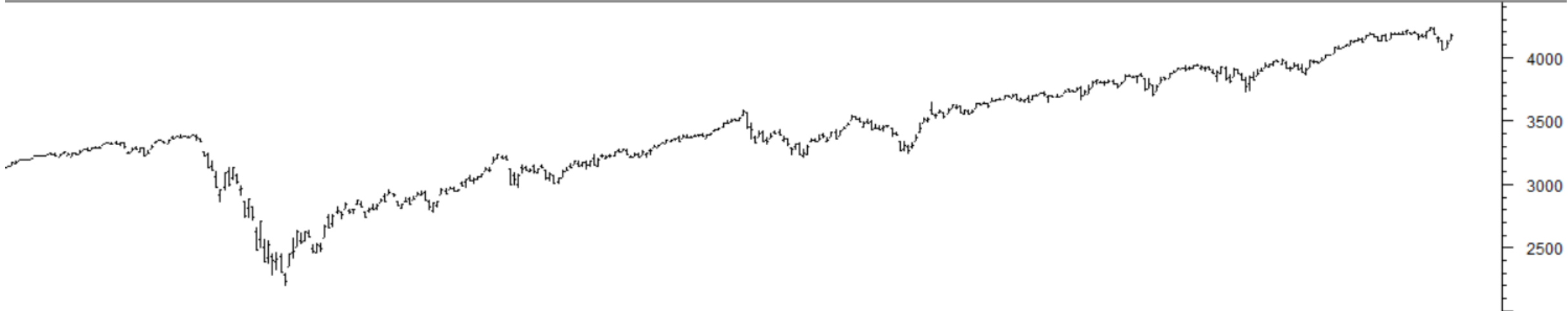


05/14: lipperusfundflows reported Equity Fund (inc ETF) inflows of \$9 billion in the week to 12th May, the highest single week inflow for nine weeks. The 8wk flow number is at \$32.26 Billion but six weeks ago reached a massive \$99.53 Billion, the highest in the database.

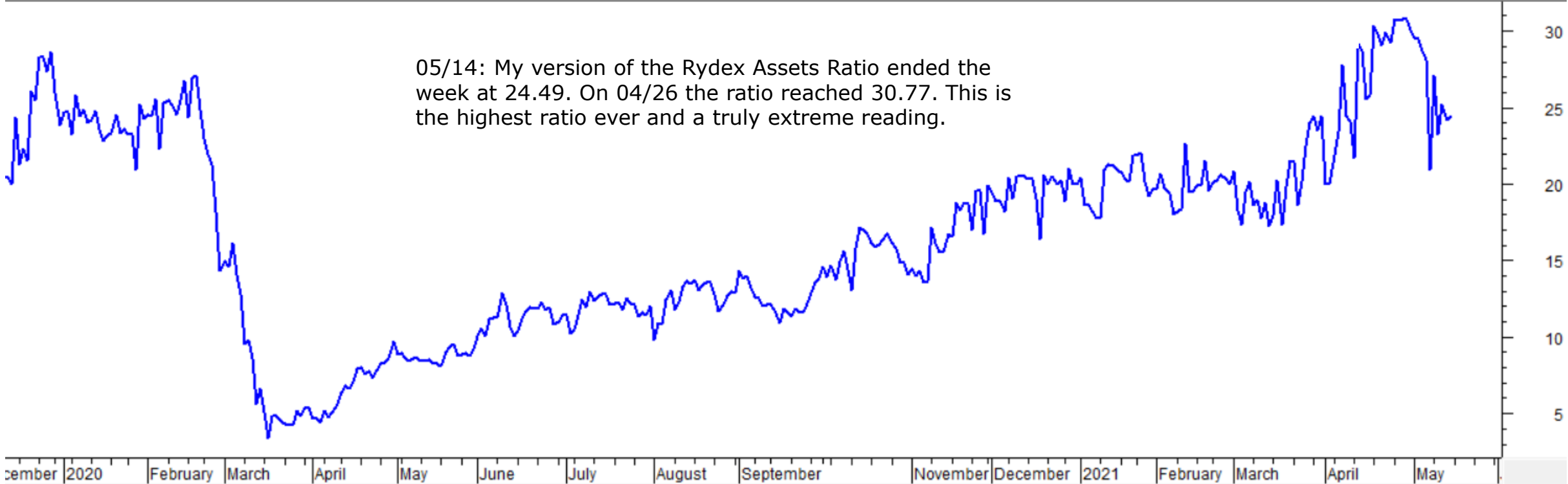


SPY + Lipper Total Equity Fund Flow (inc ETF activity)

S&P 500



RYDEX RATIO REVISED



ChartProfit