

Charts to Friday 6th August 2021

Market Charts – Sentiment Analysis

Market Breadth - week ending 8/6

	-4	-3	-2	-1	↓
NYSE	43	29	35	41	49
NasDaq	46	29	37	42	47
SP500	51	38	45	49	55
R2000	41	26	35	39	46

number = % stocks >50day ma

Mutual Fund Flow:

08/06: On Friday 30th July, my version of the Rydex Assets Ratio reached 38.57, the highest ratio recorded, indicating extremely hot sentiment.

08/06: lipperusfundflows reported Equity Fund (inc ETF) net inflows of \$2 billion in the week to 4th August.

VIX:

07/02: on Friday VIX closed the week at 15.07, its lowest reading since February 2020.

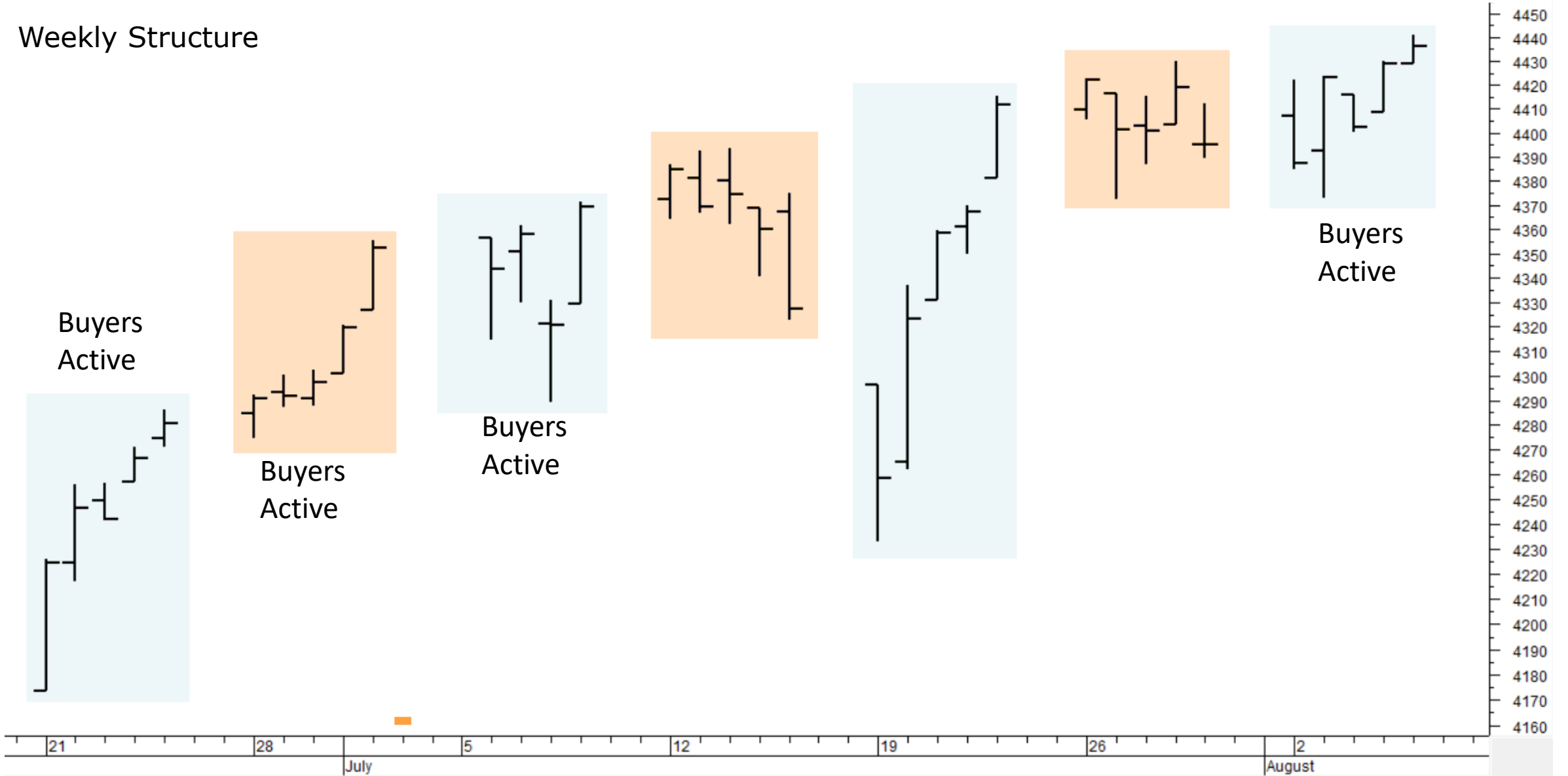
Consensus Polls:

08/06: AAI Bears% was higher at 31.7, the highest since early February.

08/06: Investors Intelligence Bulls% higher at 54.1%. Bears% lower at 16.3%. Bear% fell to 15.5 on 07/16, the lowest since March 2018 and the ratio of Bulls to Bears reached 4 on that date.

08/06: The NAAIM Exposure Index was higher at 97.72.

Weekly Structure



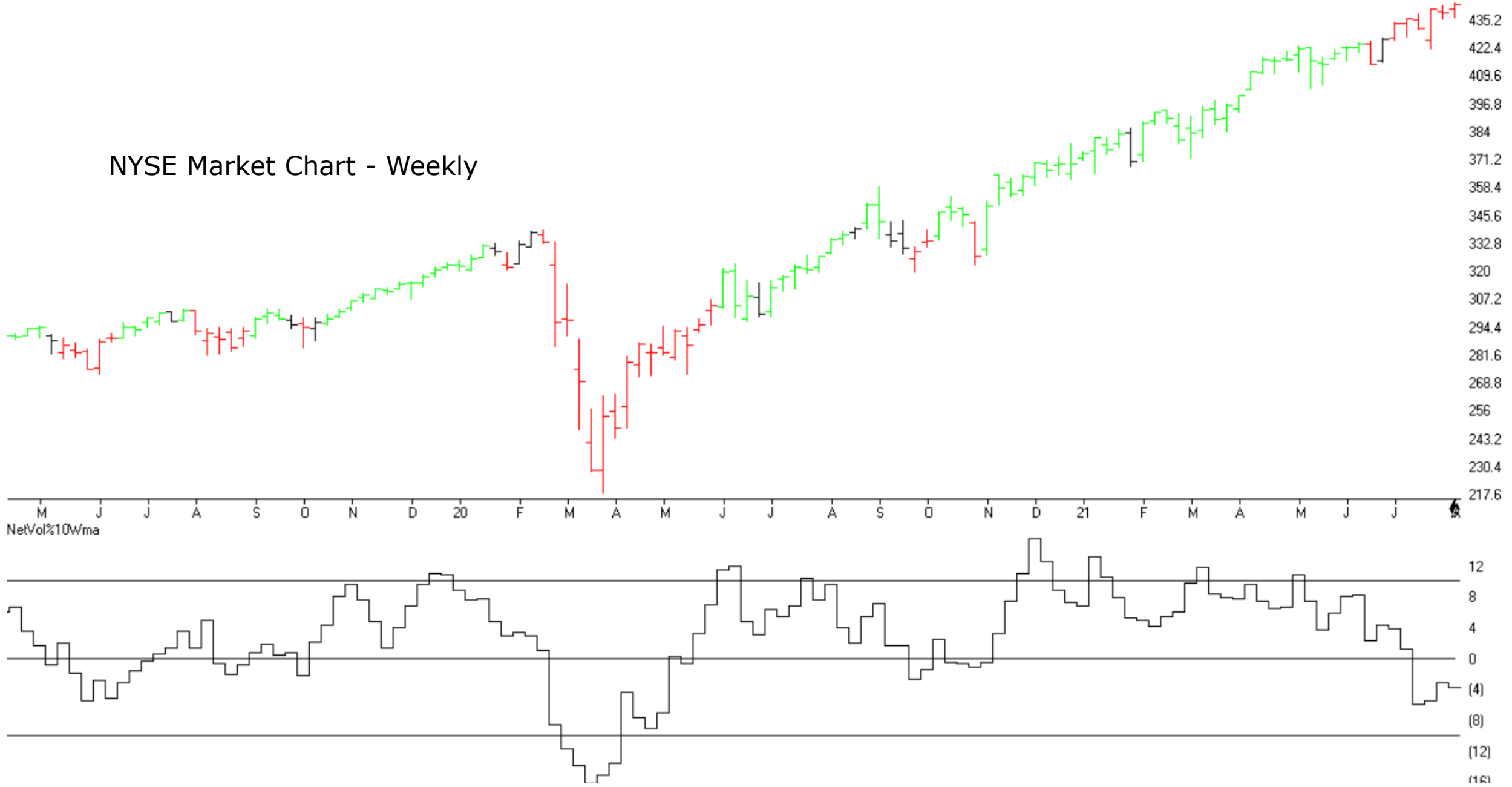
Buyers
Active

Buyers
Active

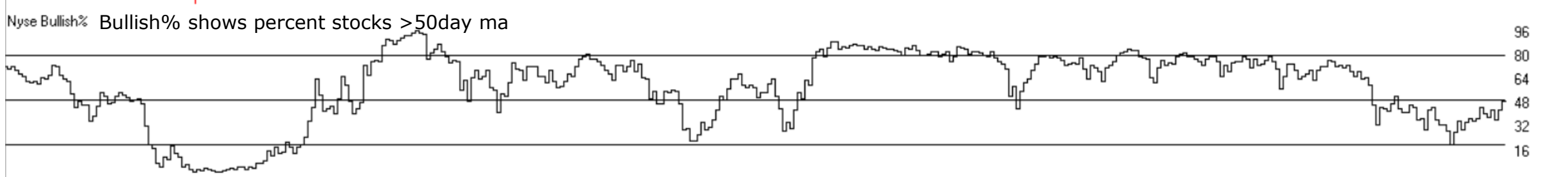
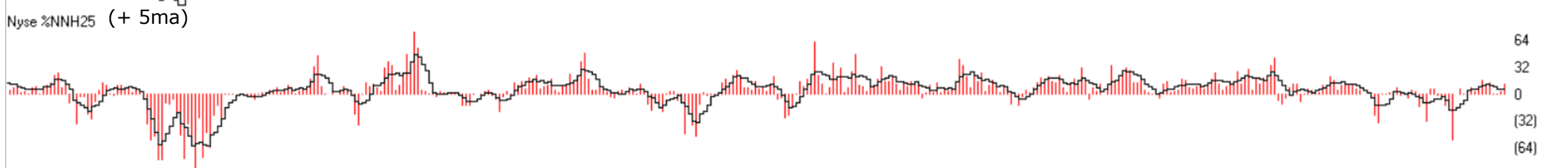
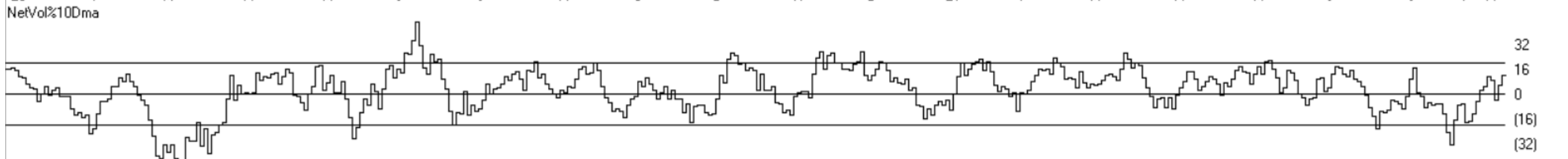
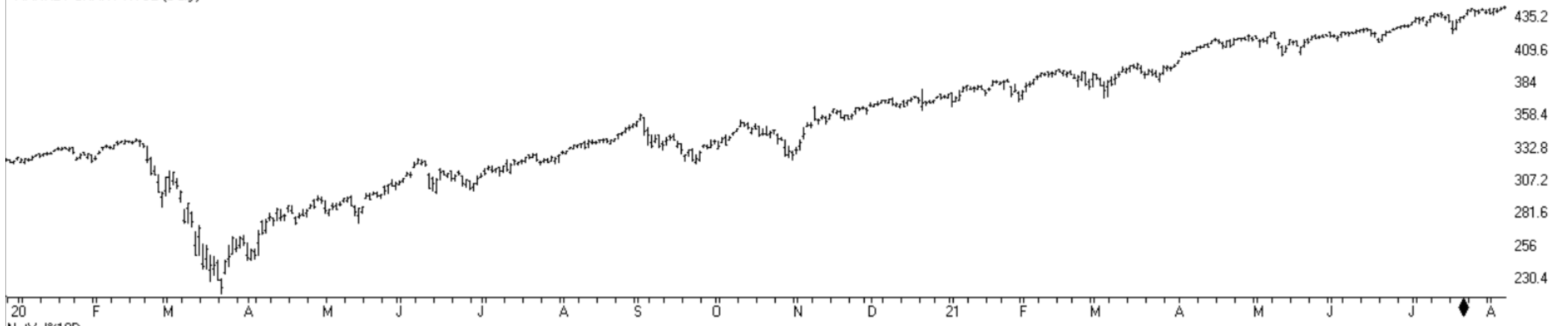
Buyers
Active

Buyers
Active

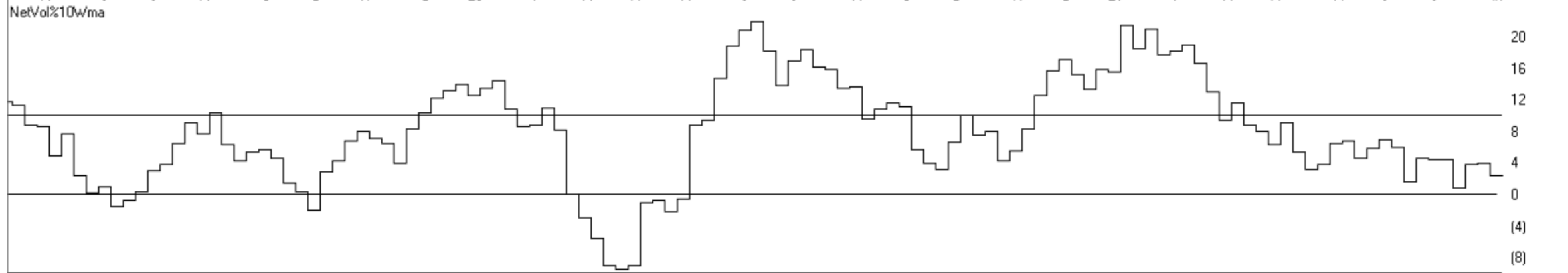
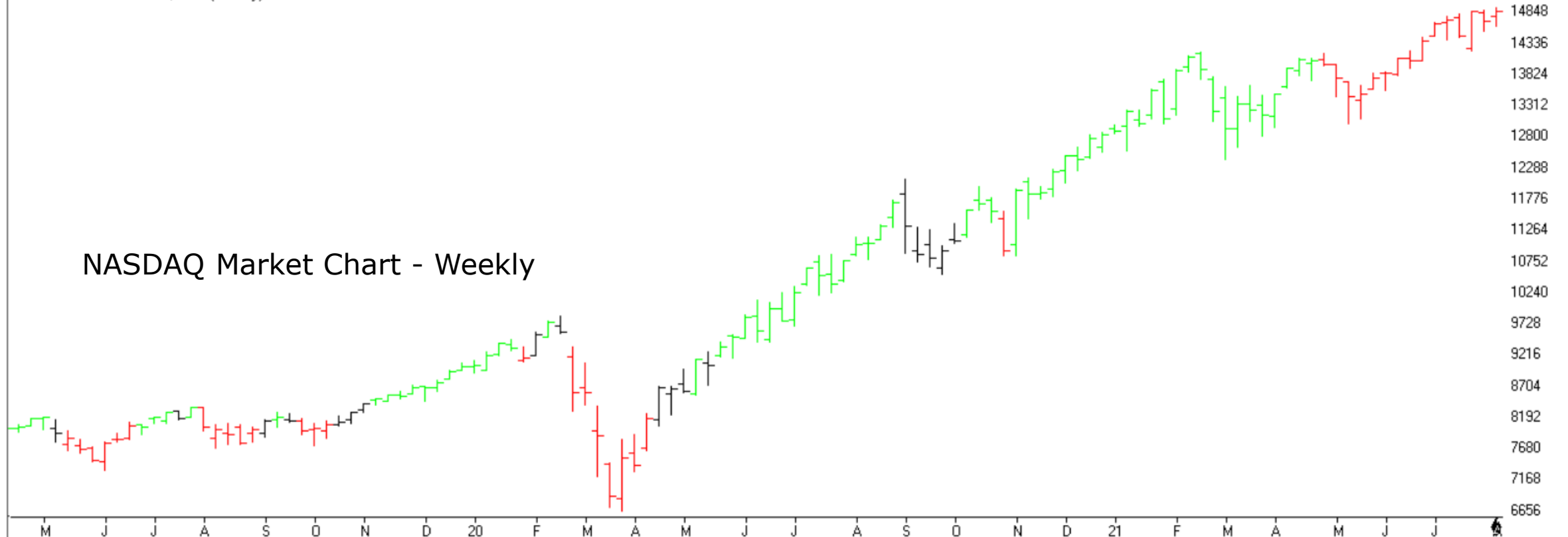
NYSE Market Chart - Weekly



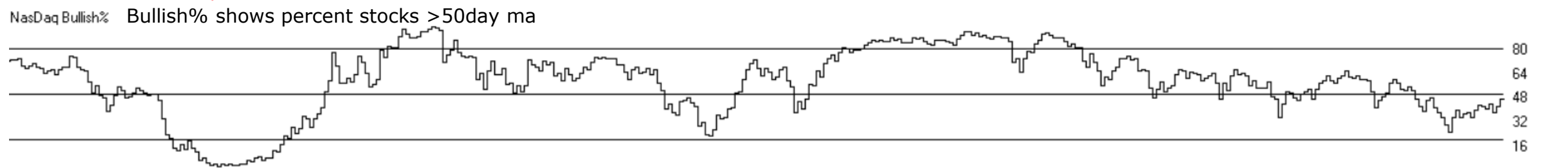
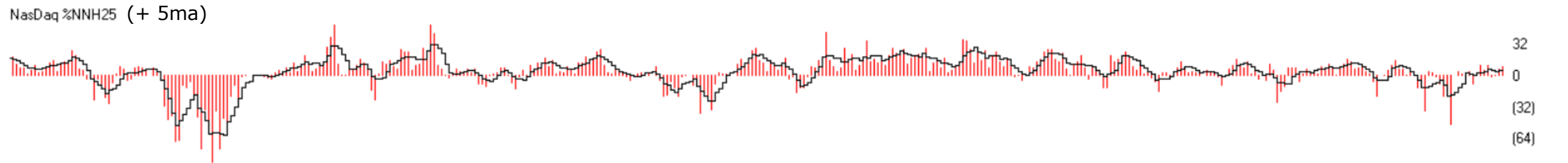
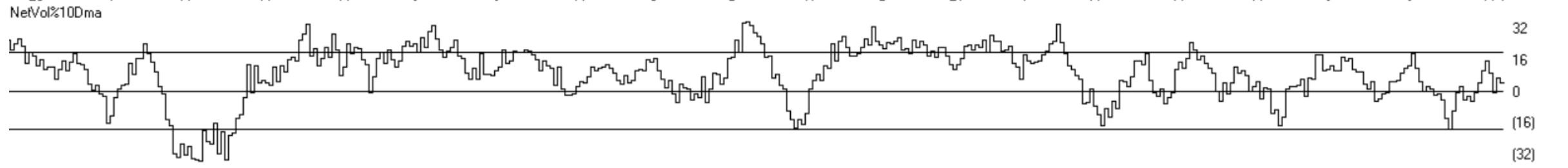
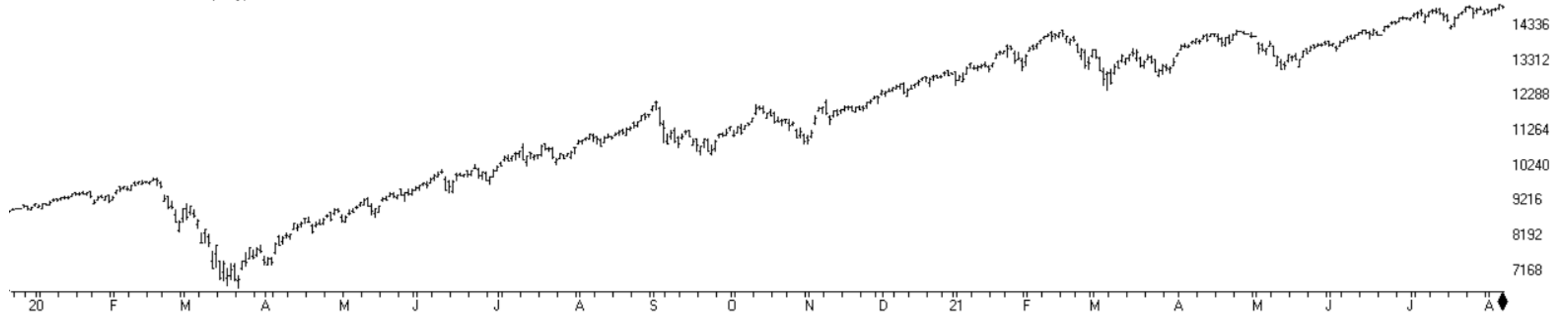
MARKET CHART NYSE (Daily)



NASDAQ Market Chart - Weekly

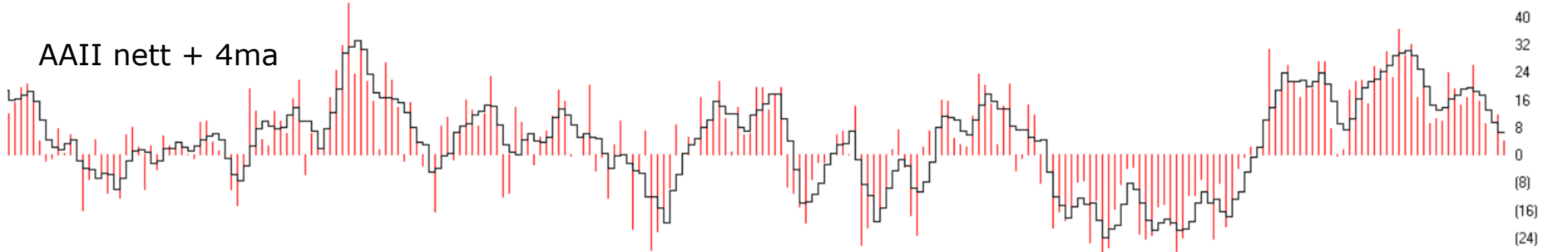
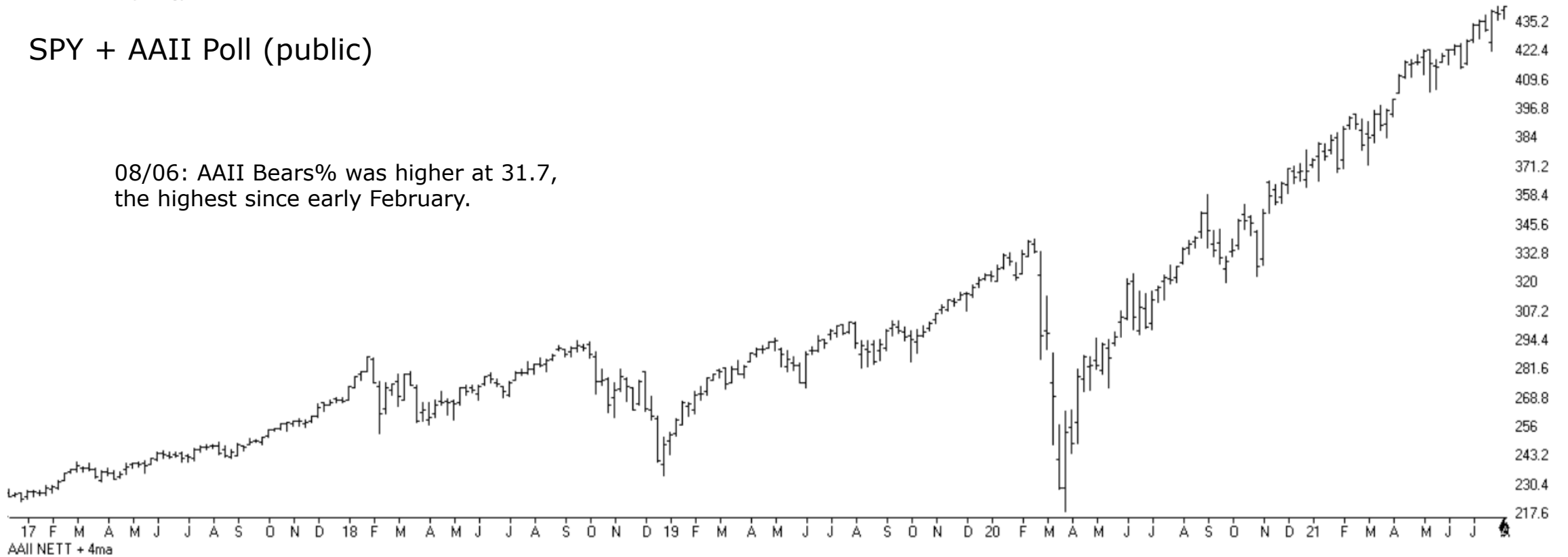


MARKET CHART NASDAQ 1800 (Daily)



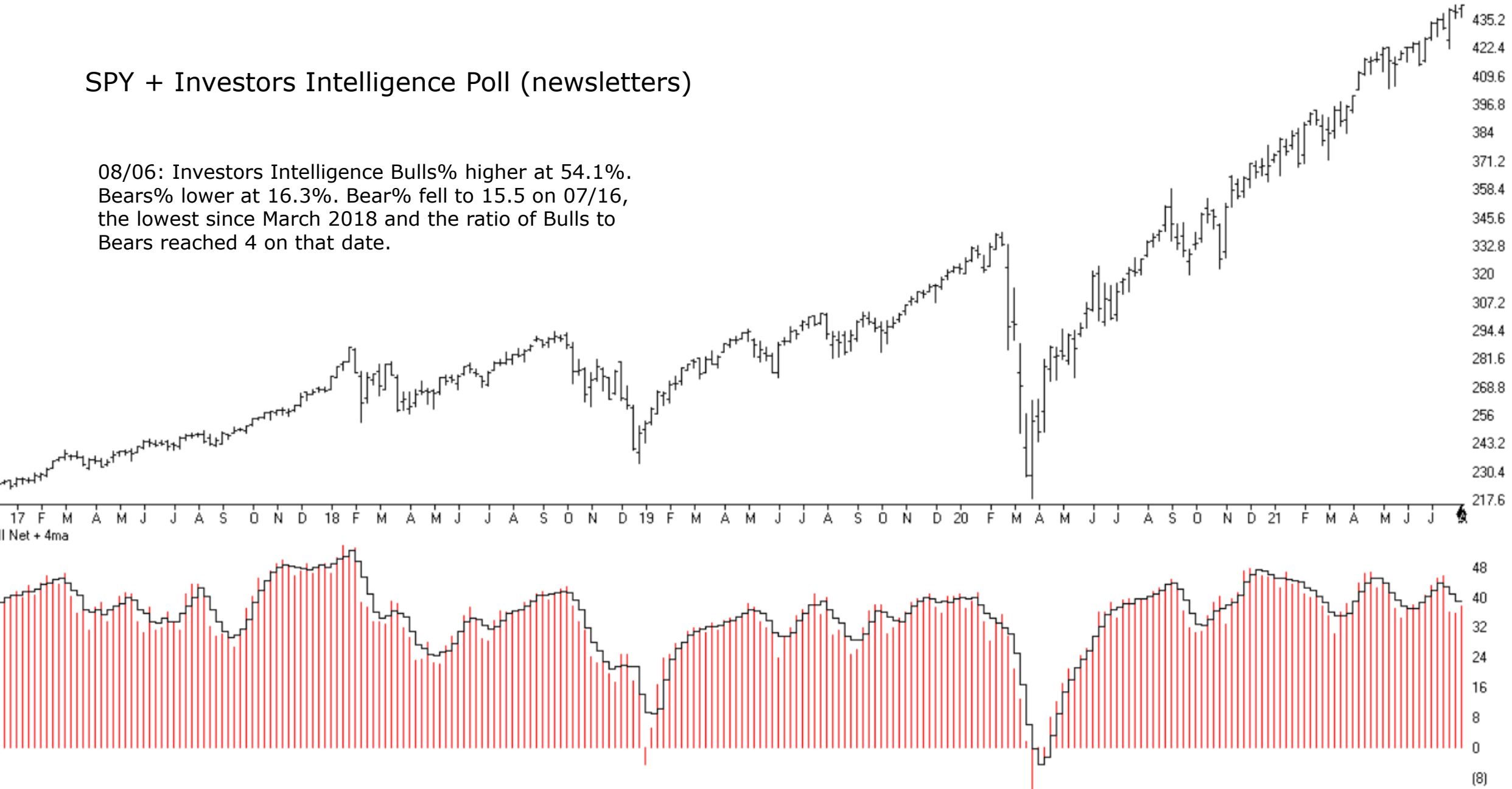
SPY + AAI Poll (public)

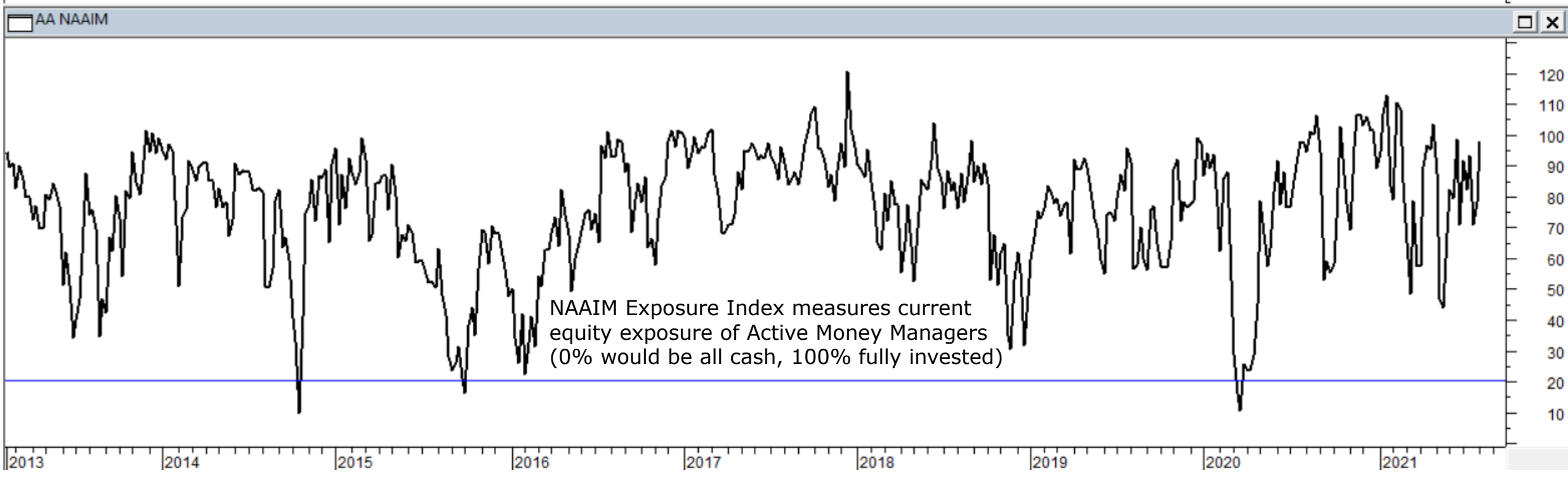
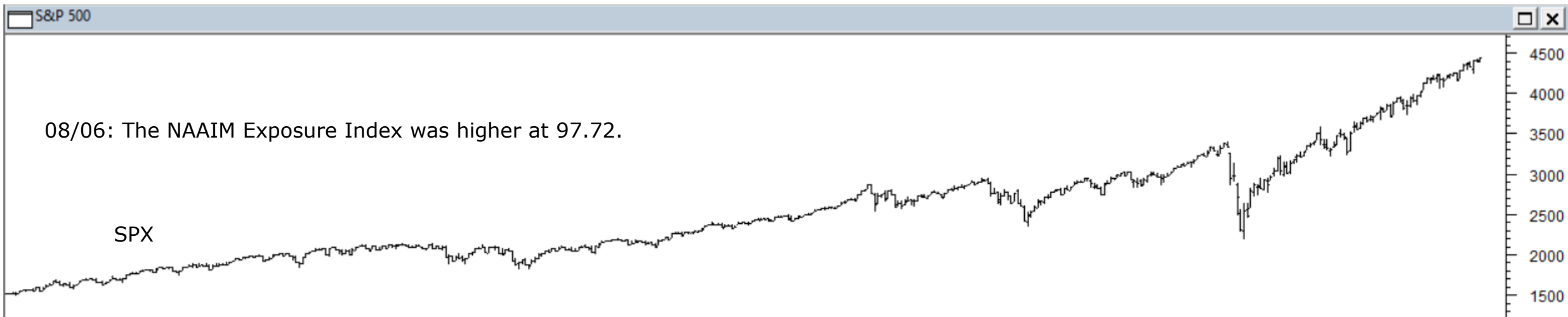
08/06: AAI Bears% was higher at 31.7, the highest since early February.

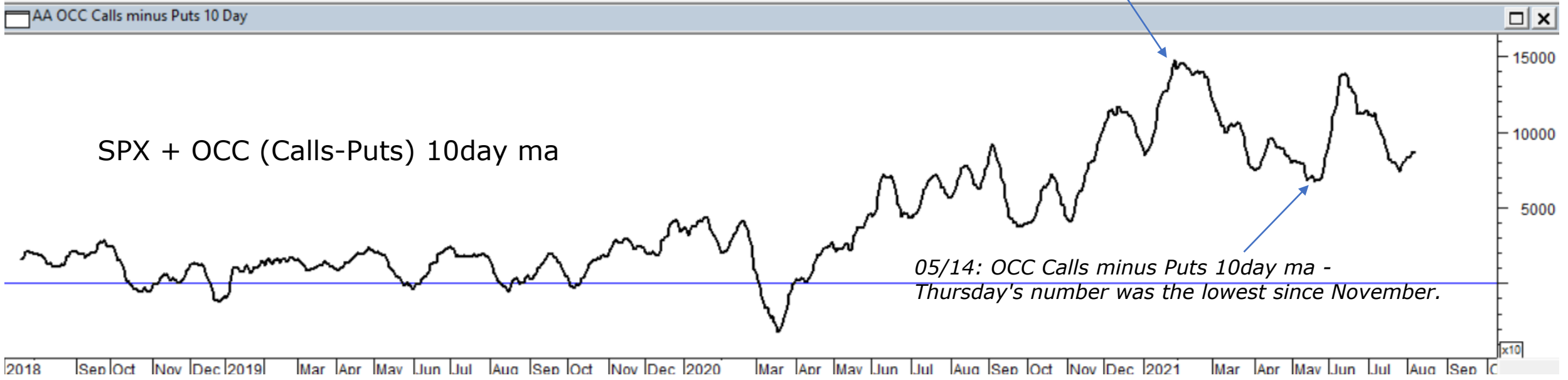
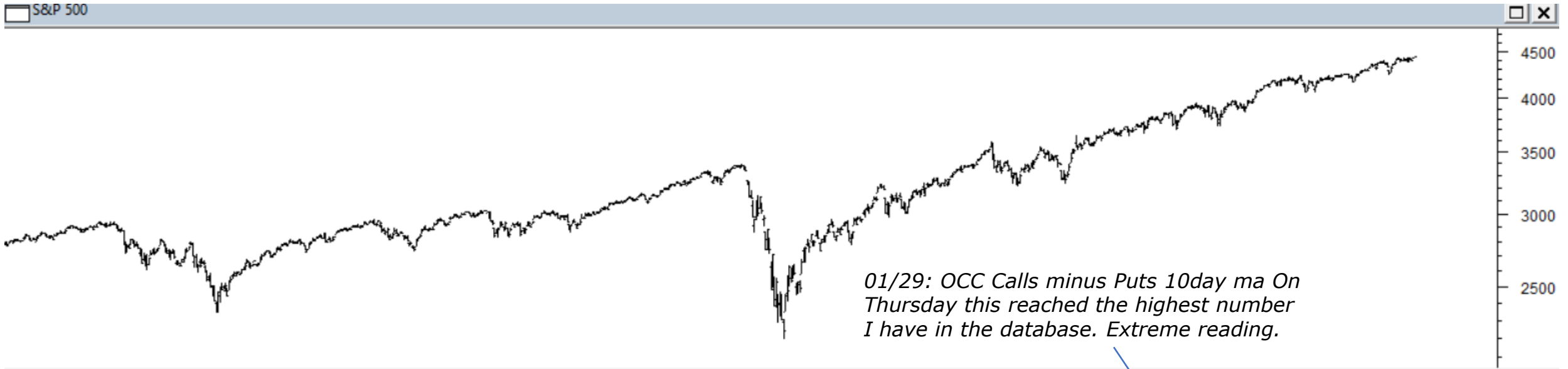


SPY + Investors Intelligence Poll (newsletters)

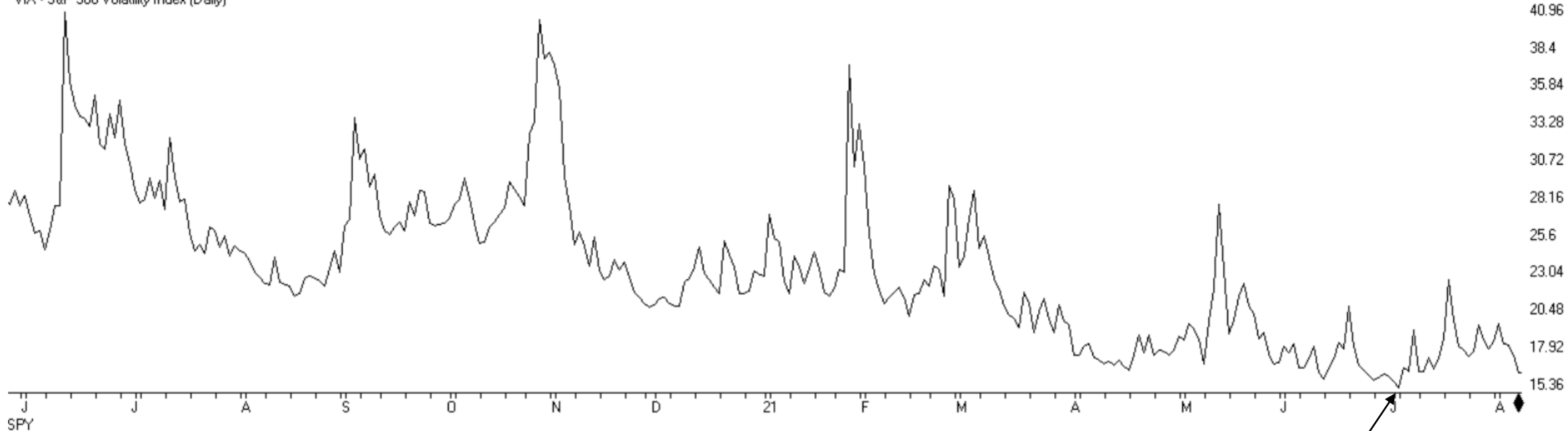
08/06: Investors Intelligence Bulls% higher at 54.1%. Bears% lower at 16.3%. Bear% fell to 15.5 on 07/16, the lowest since March 2018 and the ratio of Bulls to Bears reached 4 on that date.





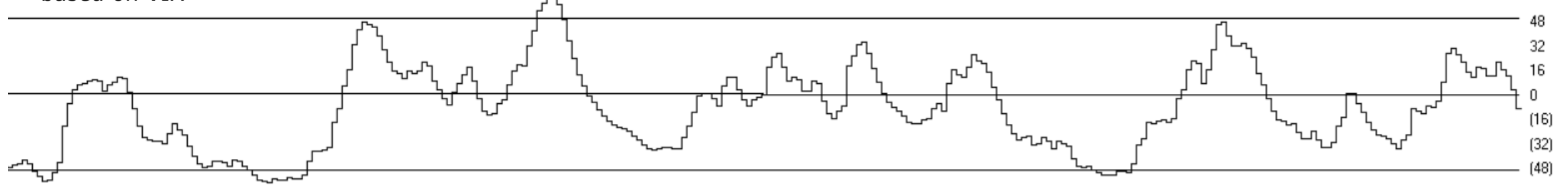


VIX - S&P 500 Volatility Index (Daily)

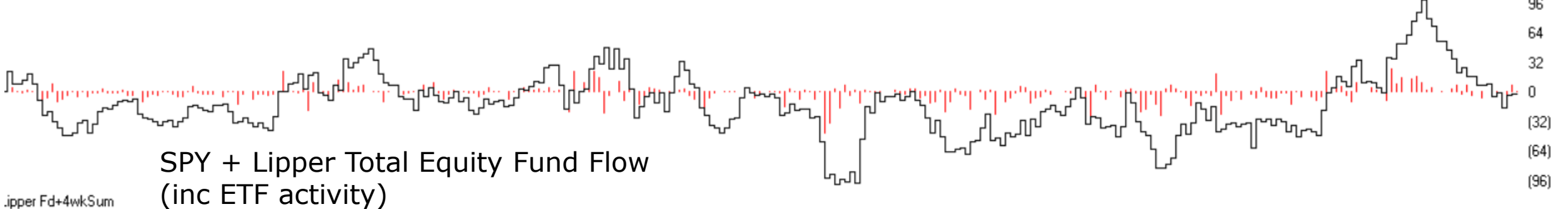
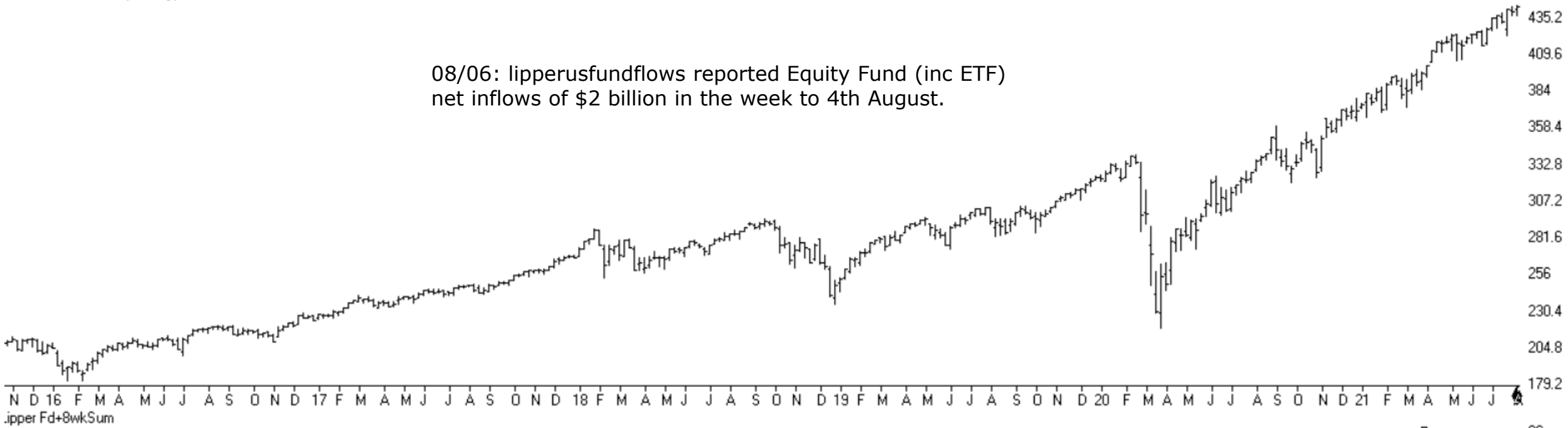


07/02: on Friday VIX closed the week at its lowest reading since February 2020.

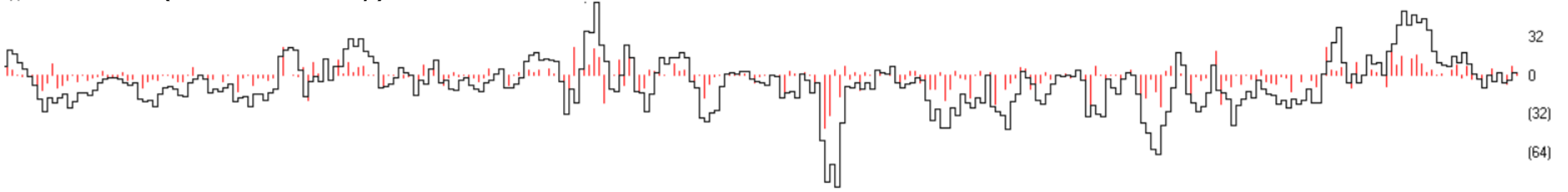
TCI based on VIX

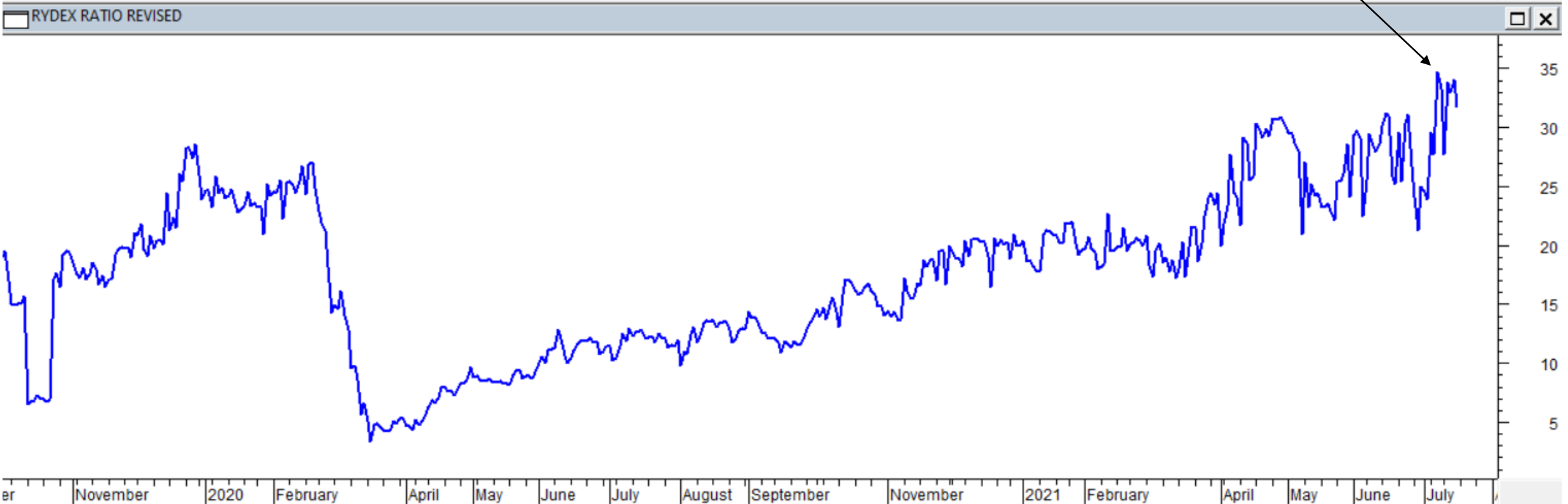
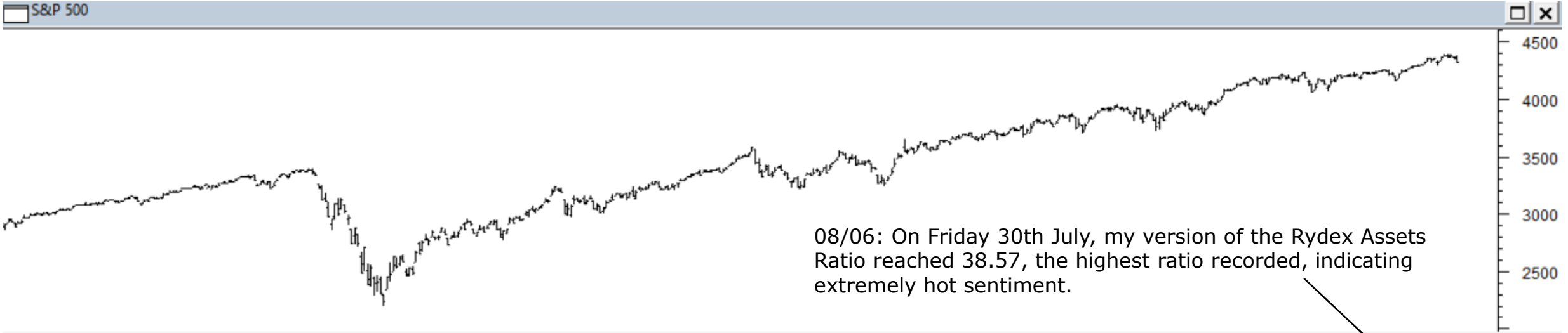


08/06: lipperusfundflows reported Equity Fund (inc ETF) net inflows of \$2 billion in the week to 4th August.



SPY + Lipper Total Equity Fund Flow (inc ETF activity)





ChartProfit